



# 2012 ANNUAL HIV SURVEILLANCE REPORT



©2009 photography  
by Judy Tejero

Issue Date:

**March 2013**

Cases Reported as of December 31, 2012

**DIVISION OF HIV AND STD PROGRAMS**

600 S. Commonwealth Avenue, Suite 1920

Los Angeles, CA 90005

Phone: (213) 351-8196

Fax: (213) 487-9386

<http://publichealth.lacounty.gov/hiv/>



**JONATHAN E. FIELDING, MD, MPH**  
Director and Health Officer

**CYNTHIA A. HARDING, MPH**  
Chief Deputy Director

Division of HIV and STD Programs  
**Mario J. Pérez, Director**  
600 South Commonwealth Avenue, 10<sup>th</sup> Floor  
Los Angeles, California 90005  
TEL (213) 351-8000 • FAX (213) 387-0912

[www.publichealth.lacounty.gov](http://www.publichealth.lacounty.gov)

**BOARD OF SUPERVISORS**

**Gloria Molina**  
First District

**Mark Ridley-Thomas**  
Second District

**Zev Yaroslavsky**  
Third District

**Don Knabe**  
Fourth District

**Michael D. Antonovich**  
Fifth District

March 8, 2013

Dear Colleague:

Enclosed you will find the *2012 Annual HIV Surveillance Summary* for Los Angeles County, containing analyzed data for HIV cases reported through December 31, 2012. Since 1982, 80,115 cases of HIV and AIDS have been reported in LA County, of which 34,641 (42%) have died and 45,474 are living. This number does not include persons that we estimate to be living with HIV not reported here because they were reported by code, their cases are pending investigation, or they are unaware of their infection. In all, we estimate around 60,000 persons to be living with HIV in Los Angeles County.

Since the last issue, we have added two new tables to the *Annual HIV Surveillance Report*. The first reflects the new emphasis on using surveillance data to more fully inform HIV prevention and care efforts, as outlined in the National HIV/AIDS Strategy (NHAS). On Page 14, Table 10 shows three key NHAS indicators that monitor how well we, as a county, are doing in getting persons with HIV into care in a timely manner, retained in care (and on treatment) and their viral load suppressed.

American Indian/Alaskan Native county residents have the second highest prevalence rate of HIV (768 per 100,000) by race/ethnicity in the county (Table 11). Because of their relatively small population size in the county (<1%) and small numbers among persons living with HIV (<1%), however, they are sometimes not included in report tables. So to better characterize this important population, we have added Table 9 on page 13, which breaks down HIV infections for American Indians/Alaskan Natives by demographic and risk categories for new diagnoses, persons living with HIV and cumulative cases.

In the past, you had a choice of receiving the *Annual HIV Surveillance Report* either by mail (hard copy) or by e-mail (electronic version). This is the first report that will only be available online. If you have not yet joined our e-mail notification list, please visit our program web site at <http://publichealth.lacounty.gov/hiv/>, click the link "Subscribe to the Mailing List," and complete the subscription form. Your personal information will be kept confidential and secure in our system.

Provider HIV case report and laboratory test report forms are available for you to download at: <http://publichealth.lacounty.gov/hiv/hivreporting.htm>. Because of severe penalties outlined in HIV reporting law for breaches in patient confidentiality, we strongly suggest that you *not* email or fax reports of HIV persons to us. Instead, please seal in a double-envelope and send by traceable mail or courier services to 600 South Commonwealth Avenue, Suite 1260, Los Angeles, CA 90005, or report by phone at (213) 351-8516. Data presented here, and other HIV information, are available on our website. Data requests can be made by phone or through our website.

Sincerely,

Mario J. Pérez, MPH

Douglas M. Frye, MD, MPH

## 2013 Annual HIV Surveillance Summary Highlights

- In 2011, Los Angeles County (LAC) reported 1,880 new HIV diagnoses, accounting for 38% of California's 4,950 HIV diagnoses reported in that year.
- HIV Surveillance data are now being used to monitor National HIV/AIDS Strategy (NHAS) indicators, which stress the need to monitor how well jurisdictions get persons newly diagnosed with HIV into care, retained in care and on adequate treatment to suppress their viral load, so that better clinical outcomes, as well as decreased transmission of HIV, can be realized. Three NHAS indicators are included in this year's HIV surveillance report.
- Comparable to a recent national indicator report, we have evidence that, in 2010, 79% of persons newly diagnosed with HIV in LAC got into care within 3 months.
- Among persons living with an HIV infection in 2010, 56% were retained in care in LAC (that is, had evidence of 2 visits in the calendar year at least 3 months apart).
- Of persons with HIV in LAC who had an HIV viral load lab test result done in 2010, 79% had indication of complete viral suppression (that is, a viral load test result with less than 200 virus particles per milliliter of blood plasma).
- While accounting for less than 1% of population and persons living with HIV, American Indian/Alaskan Native (AI/AN) persons were second only to Black/African Americans in the race/ethnic-specific HIV prevalence rate (768 vs. 998 per 100,000 population respectively).
- AI/AN persons living with HIV were more likely to be less than 50 years old than were the combined total of non-AI/AN race/ethnic groups (68% vs. 60%).
- AI/AN persons living with HIV were three times more likely to have reported being MSM who injected drugs than were the combined total of non-AI/AN race/ethnic groups (18% vs. 6%).

**NOTICE TO HEALTH CARE PROVIDERS, LABORATORIES, AND OTHERS  
RESPONSIBLE FOR DISEASE REPORTING:**

California Code of Regulations, Title 17, Section 2500 requires that all diagnosed or suspected cases of AIDS as defined by CDC must be reported within seven (7) days to the Health Officer. California Code of Regulations, Title 17, Section 2600/2641.5-2643.20 require both health care providers and laboratories to report HIV cases by name to the Health Officer within seven (7) days. In addition, Senate Bill (SB) 1184 requires each clinical laboratory to report all CD4+ T-cell tests to the local Health Officer within seven (7) days of the completion of a CD4+ T-cell test. To obtain more information on the HIV/AIDS reporting requirement, obtain case report forms, or report a case, please visit our web site: <http://publichealth.lacounty.gov/hiv/hivreporting.htm>, or contact Division of HIV and STD Programs (DHSP), 600 South Commonwealth Avenue, Suite 1260, Los Angeles, CA 90005. Phone (213) 351-8516; Fax (213) 487-4683.

Suggested Citation: Division of HIV and STD Programs, Los Angeles County  
Department of Public Health. 2012 Annual HIV Surveillance Report.  
[http://publichealth.lacounty.gov/wwwfiles/ph/hae/hiv/2012AnnualHIVSurveillance  
Report.pdf](http://publichealth.lacounty.gov/wwwfiles/ph/hae/hiv/2012AnnualHIVSurveillanceReport.pdf). Published March 2013. Accessed [date].

Los Angeles County Department of Public Health ..... Jonathan E. Fielding, M.D, M.P.H.  
Director and Health Officer

Division of HIV and STD Programs ..... Mario J. Pérez, M.P.H.  
Director

Douglas Frye, M.D., M.P.H.  
Chief, HIV Epidemiology and HIV Surveillance Coordinator

Virginia Hu, M.P.H.  
Supervising Epidemiologist

Zhijuan Sheng, M.S.  
Epidemiologist

Latonya Taylor, R.N., M.S.N./M.P.H.,C.N.S.  
Assistant Program Specialist,PHN

# CONTENTS

---

<b>Commentary</b> .....	1
<b>HIV/AIDS diagnoses, deaths, and persons living with HIV/AIDS, Los Angeles County, California, and the United States</b> .....	4
<b>Section 1 Diagnoses of HIV Infection</b>	
Figure 2 Annual diagnoses of AIDS and HIV infection and deaths of persons with HIV infection, Los Angeles County, 1991-2012.....	5
Figure 3 Persons living with HIV infection and AIDS by year, Los Angeles County, 1991-2012 .....	6
Table 1 Diagnoses, deaths, and persons living with a diagnosis of HIV infection and AIDS by year, reported by December 31, 2012, Los Angeles County.....	6
Table 2 Cumulative HIV/AIDS diagnoses by gender, age, and race/ethnicity, reported by December 31, 2012, Los Angeles County .....	7
Table 3 Cumulative HIV/AIDS diagnoses among adults/adolescents by gender, transmission category, and race/ethnicity, reported by December 31, 2012, Los Angeles County .....	8
Table 4 Cumulative HIV/AIDS diagnoses among children <13 years of age by transmission category, and race/ethnicity, reported by December 31, 2012, Los Angeles County .....	9
Table 5 HIV/AIDS diagnoses among children <13 years of age by race/ethnicity, transmission category, and year of HIV diagnosis, reported by December 31, 2012, Los Angeles County .....	9
Table 6 HIV/AIDS diagnoses and rates per 100,000 by gender, age, race/ethnicity, transmission category, service planning area and year of HIV diagnosis, reported by December 31, 2012, Los Angeles County .....	10
Table 7 HIV/AIDS diagnoses and rates per 100,000 by service planning area/health district of residence, and year of HIV diagnosis, reported by December 31, 2012, Los Angeles County.....	11
Table 8 HIV/AIDS diagnoses and rates per 100,000 by year of HIV diagnosis and city/area of residence, top 35 cities/areas ranked by 2011 rate, reported by December 31, 2012, Los Angeles County .....	12
Table 9 New HIV diagnoses in 2009-2011, persons living with HIV/AIDS, and cumulative HIV/AIDS cases among American Indian/Alaskan Native by gender, age and transmission category, reported by December 31, 2012, Los Angeles County.....	13
Table 10 Linkage to care among adults /adolescents with an HIV diagnosis in 2010 and retention in care among adults /adolescents living with an HIV infection as of 2010, Los Angeles County .....	14
Table 11 HIV/AIDS diagnoses in 2011, persons living with HIV/AIDS, and cumulative cases by gender, age, race/ethnicity and transmission category, reported by December 31, 2012, Los Angeles County ...	15
Table 12 New HIV/AIDS diagnoses in 2009 and rates per 100,000 by gender, age, race/ethnicity, transmission category, and service planning area (SPA), reported by December 31, 2012, Los Angeles County .....	16
Table 13 New HIV/AIDS diagnoses in 2010 and rates per 100,000 by gender, age, race/ethnicity, transmission category, and service planning area (SPA), reported by December 31, 2012, Los Angeles County .....	17
Table 14 New HIV/AIDS diagnoses in 2011 and rates per 100,000 by gender, age, race/ethnicity,	

	transmission category, and service planning area (SPA), reported by December 31, 2012, Los Angeles County .....	18
Table 15	Persons living with HIV/AIDS as of December 31, 2012 by race/ethnicity, gender, age, transmission category, and service planning area (SPA), reported by December 31, 2012, Los Angeles County .....	19
Table 16	Persons living with HIV/AIDS and rates per 100,000 as of December 31, 2012 by service planning area (SPA), gender, age, race/ethnicity and transmission category, reported by December 31, 2012, Los Angeles County .....	20
Table 17	Cumulative HIV/AIDS diagnoses by gender, age, race/ethnicity, transmission category, and service planning area (SPA), reported by December 31, 2012, Los Angeles County .....	21
Figure 8	Rates of HIV/AIDS diagnoses among adult/adolescent men by race/ethnicity, Los Angeles County, 2006-2012 .....	33
Figure 9	Rates of HIV/AIDS diagnoses among adult/adolescent women by race/ethnicity, Los Angeles County, 2006-2012.....	33
Figure 10	Diagnoses of HIV (incl AIDS) among adults/adolescents by transmission category and year of HIV diagnosis, Los Angeles County, 1992-2012.....	34
Figure 11	Transmission category for persons living with HIV/AIDS as of December 31, 2012 by gender in Los Angeles County .....	34
Figure 12	Persons reported living with HIV/AIDS as of December 31, 2012 and living HIV/AIDS rate per 100,000 population by service planning area (SPA) in Los Angeles County .....	35
Figure 13	New HIV diagnoses in 2009-2011 by zip code and service planning area (SPA) in Los Angeles County .....	Inside Back Cover
Figure 14	Persons living with a diagnosis of HIV infection as of December 31, 2012 by zip code and service planning area (SPA) in Los Angeles County .....	Back Cover

**Section 2 Diagnoses of non-AIDS HIV**

Table 18	Persons living with non-AIDS HIV and rates per 100,000 as of December 31, 2012 by service planning area (SPA), gender, age, race/ethnicity and transmission category, Los Angeles County ..	22
----------	---	----

**Section 3 Diagnoses of AIDS**

Figure 1	Annual number of AIDS diagnoses and AIDS reports in 1988-2012, Los Angeles County .....	5
Table 19	AIDS diagnoses and rates per 100,000 by gender, year of diagnosis, and race/ethnicity, reported by December 31, 2012, Los Angeles County.....	23
Table 20	AIDS diagnoses among adults/adolescents and rates per 100,000 by gender, year of diagnosis, and race/ethnicity, reported by December 31, 2012, Los Angeles County .....	24
Table 21	AIDS diagnoses by gender, transmission category, and year of diagnosis, reported by December 31, 2012, Los Angeles County .....	25
Table 22	AIDS diagnoses among Whites by gender, transmission category, and year of diagnosis, reported by December 31, 2012, Los Angeles County .....	26
Table 23	AIDS diagnoses among Blacks by gender, transmission category, and year of diagnosis, reported by December 31, 2012, Los Angeles County .....	27
Table 24	AIDS Diagnoses among Hispanics/Latinos by gender, transmission category and year of diagnosis,	

	reported by December 31, 2012, Los Angeles County .....	28
Table 25	Persons living with AIDS and rates per 100,000 at the end of calendar year, by gender, age, race/ethnicity, and transmission category, reported by December 31, 2012, Los Angeles County ...	29
Table 26	Persons living with AIDS and rates per 100,000 as of December 31, 2012 by service planning area (SPA), gender, age, race/ethnicity and transmission category, Los Angeles County.....	30
Figure 4	Male adult/adolescent AIDS rates by race/ethnicity and year of diagnosis, Los Angeles County, 1992-2011 .....	31
Figure 5	Female adult/adolescent AIDS rates by race/ethnicity and year of diagnosis, Los Angeles County, 1992-2011 .....	31
Figure 6	Proportion of AIDS diagnoses among adults/adolescents by race/ethnicity and year of diagnosis, Los Angeles County, 1992-2012.....	32
Figure 7	Number of AIDS diagnoses among adults/adolescents by race/ethnicity and year of diagnosis, Los Angeles County, 1992-2012.....	32
Appendix 1	2008 revised surveillance case definitions for human immunodeficiency virus (HIV) infection among adults and adolescents (aged $\geq 13$ years).....	36
Appendix 2	AIDS-defining conditions .....	37
Appendix 3	Technical notes.....	38

## Commentary

AIDS case surveillance has been a core public health activity in Los Angeles County (LAC) since 1982. Non-AIDS HIV case surveillance, which also mandates laboratory reporting of confirmatory HIV tests, began in California in July 2002. Between July 2002 and April 16, 2006, 15,275 cases of HIV were reported in LAC using a non-named, coded case reporting system. In April 2006, California law was revised to require the reporting of HIV cases by name rather than by non-named code. By December 31, 2012, 79% of the LAC cases initially reported by code, have been converted to named HIV/AIDS cases. Included in this report are all 18,735 new or re-ascertained cases of non-AIDS HIV that have been submitted since 2006. It does not include the remaining 3,238 coded HIV reports that have not yet been re-ascertained with name. At the time of this writing, there is also a backlog of 4,275 laboratory notifications pending investigation to determine if they represent cases of HIV that have not yet been reported. Therefore, the HIV data presented in this report are still preliminary and the use of these data to provide estimates of trends over time is to be done with caution, if at all.

### Diagnoses of HIV infection in 2010

In 2010, a total of 2,065 persons were reported as diagnosed with an HIV infection including those diagnosed with AIDS in LAC.

**Gender:** Among persons reported with a new diagnosis of HIV infection in 2010, 230 (11%) were female, 1,816 (88%) were male, and 19 were transgender men or women (1%).

**Age:** Most (60%) cases of HIV were diagnosed among 20-39 years of age, followed by persons at age 40-49 years (23%) and 50 years or older (13%). Youth at age 13-19 years represented a small portion of new diagnoses in 2010 (4%).

**Race/Ethnicity:** Among the persons who were newly diagnosed with an HIV infection in 2010, Latinos represented the largest racial/ethnic group (45%), followed by Whites (25%), Blacks (24%), Asian/Pacific Islander (4%), and American Indian/Alaska Native (< 1%). The racial/ethnic distribution of new HIV diagnoses differed by sex. Among females, 45% were Latina, 38% were Black, and 14% were White. Among males, 46% were Latino, 22% were Black, and 26% were White.

Although far more Whites and Latinos were diagnosed with an HIV infection, Blacks who represent less than 10 percent of the general population in this county had the highest diagnosing rate at 52 per 100,000, more than triple the rate of Whites (16/100,000) and nearly triple that of Latinos (19/100,000).

**Transmission Category:** The transmission category of HIV infection indicates how HIV was transmitted – that is, through sexual contact, injecting drugs using an HIV-contaminated needle or syringe (IDU), transmission from mother to child, or by receiving HIV-contaminated blood or blood products. Because a substantial proportion of persons with HIV infection are reported without an identified risk factor, The CDC-recommended multiple imputation methods to assign a risk factor for these cases are used (see Technical Notes). With this adjustment, we estimate that 82% of 2010 HIV diagnoses were in Men-who-have-sex-with-men (MSM), 11% transmitted through heterosexual contact, 4% were heterosexual injection drug users, and 3% were MSM who also inject drugs (MSM/IDU). These percentages vary among different racial/ethnic groups. For example, heterosexual contact transmission category accounted for 16% of new diagnoses among Blacks and 11% among Latinos, but only 7% among Asians/Pacific Islanders and 5% among whites.

**Geographic Distribution:** In 1998, 26 health districts in Los Angeles County (LAC) were aggregated into eight Service Planning Areas, or SPAs, in an effort to characterize local health needs regionally. As is seen with other diseases, HIV/AIDS has not affected all areas of the county equally.

Among all SPAs, the highest rate for HIV diagnosis in 2010 was reported among persons in Metro (62 per 100,000), South (25 per 100,000), and South Bay SPAs (21 per 100,000; Table 7). When broken down to cities and smaller areas, the city of West Hollywood and the Wholesale district of Los Angeles had the highest rates of HIV diagnosis (266 per 100,000 and 216 per 100,000, respectively) followed by Downtown (106 per 100,000) and Hollywood (83 per 100,000; Table 8). The reason for such a high rate in the Wholesale district was the many new diagnoses reported among incarcerated persons in the Los Angeles Men's Central Jail situated in that district.



## Persons Living with HIV/AIDS (PLWHA)

There were a total of 45,474 persons living with HIV/AIDS (PLWHA) reported in LAC as of December 31, 2012, not including coded HIV reports not yet re-ascertained with name.

**Gender:** The number of PLWHA in LAC has increased steadily since 2006, when mandatory and named reporting for non-AIDS/HIV began in LAC (see Table 1). This increase can be seen for both males and females, resulting in 39,828 male, 5,140 female, and 506 transgender PLWHA in LAC by December 31, 2012. Males currently represent about 8 out of 9 (89%) PLWHA in LAC.

**Age:** Almost three-quarters (73%) of PLWHA are 40 years or older. The median age of PLWHA in LAC is 47 years. Less than 1% of PLWHA are under 20 years of age and 11% are 60 years or older.

**Race/Ethnicity:** As seen in Table 11, 41% of PLWHA in LAC are Latino, 34% White, 21% Black, and 3% Asian/Pacific Islander. Less than 1% of LAC cases are American Indian/Alaska Native. The racial/ethnic distribution of PLWHA differs by sex. Among female PLWHA, 45% are Latina, 36% are Black, and 15% are White. Among male PLWHA, 40% are Latino, 19% are Black, and 36% are White.

**Transmission Category:** Using the multiple imputation methods to adjust for persons with undetermined risk factor for HIV infection (see Technical Notes), we estimate that 77% of PLWHA are MSM, and 6% are MSM who also inject drugs (MSM/IDU). Other transmission categories include injection drug use (5%) and heterosexual contact (11%; see Table 11).

**Geographic Distribution:** Figure 12 is a map showing the number (in red), percent (in green), and rate per 100,000 population (in blue) of PLWHA reported in LAC by SPA. Persons living with HIV are based on preliminary data collected from April 17, 2006 to December 2012. Metro SPA has the highest number (17,368), proportion (38%), and rate (1,395 per 100,000) of PLWHA among SPAs in the county, followed by South Bay with 7,655 PLWHA (17%), and a rate of 473 per 100,000. Antelope Valley has the lowest number (631), percent (1%), and rate (173 per 100,000) of PLWHA in LAC.

## Annual Diagnoses of AIDS

Severe HIV Disease is also known as Acquired Immunodeficiency Syndrome, or AIDS. The annual number of AIDS diagnoses in LAC has decreased substantially from a high of approximately 4,132 cases in 1992 to 1,165 cases in 2010 (see Figure 1).

**Gender:** AIDS diagnoses among females have decreased from a high of 356 cases in 1995 to 137 cases in 2010. In 1993, males composed 92% and females 8% of all adult and adolescent AIDS cases in LAC. The proportion of female cases rose to 14% in 2001 and declined slightly to 12% in 2010 (see Table 20).

**Race/ethnicity:** The annual number of AIDS cases decreased for all races/ethnicities in the last 10 years. The most dramatic decreases were among Blacks, whose annual total dropped 30%, from 408 cases in 2000 to 286 cases in 2010. White cases decreased 53%, from 538 in 2000 to 253 in 2010. The number of cases among Latinos decreased 28%, from 780 in 2000 to 563 in 2010, respectively. The number of cases among American Indian and Alaska Natives remained below 10 cases a year without a significant trend. The number of cases among Asian/Pacific Islanders fluctuated between 32 and 61 cases per year in 2000-2010.

In 1992, Whites represented 49% of adults and adolescents diagnosed with AIDS in LAC while Blacks represented 20%, Latinos 29%, and Asian/Pacific Islanders only 2% (see Figure 6). However, by 2010, Latinos composed the largest proportion of annual AIDS cases with 49%, followed by Blacks, 25%, Whites, 22%, and Asian/Pacific Islanders, 4%. Not shown in the figure due to small numbers are American Indians and Alaska Natives who represented <1% of all LAC adults and adolescents diagnosed with AIDS.

**Age:** The introduction of improved HIV treatments beginning in 1996 contributed to a significant delay in the progression of HIV to AIDS for many individuals. Between 1995 (prior to the introduction of more effective HIV treatments) and 2010, the proportion of AIDS cases diagnosed among persons over age 40 years increased 40%. The most dramatic shift, however, occurred among those diagnosed at age 50 years or older, increasing from 11% in 1995 to 21% in 2010.

## **National HIV/AIDS Strategy (NHAS) Recommended Care Indicators**

Three goals for NHAS are: 1) increase proportion of newly diagnosed patients linked to clinical care within three months of their HIV diagnosis from 65 percent to 85 percent; 2) increase proportion of Ryan White HIV/AIDS Program clients who are in continuous care (at least 2 visits for routine HIV medical care in 12 months at least 3 months apart) from 73 percent to 80 percent by 2015 and 3) increase by 20% (each) the percentage of gay, bisexual, and other men who have sex with men, blacks/African Americans, and Hispanics/Latinos with undetectable viral load results.

HIV viral load (VL) and CD4+ T-Cell testing are considered the most important clinical markers of successful treatment. Since the implementation of mandatory name-based HIV reporting in California in April 2006, laboratories have been required to report all VL tests to the health department. In 2008, the reporting of CD4+ T-Cell test with all values has also been amended in California. As of December 2012, the Los Angeles County Department of Public Health (LACDPH) now has a mature laboratory surveillance system to monitor initial engagement in care for newly diagnosed HIV-infected patients, the continuous care and degree of viral load suppression among persons living with HIV in the county. Results shown in Table 10 are summarized here.

**Linkage to Care:** In this report, timely linkage to care is defined as having a VL or CD4+ T-cell test performed in the same month or within three months of HIV diagnosis.

Among 2,192 adults/adolescents diagnosed with an HIV infection in 2010, 79% or 1,740 were linked to care in 3 months. Asian/PI MSMs, white MSMs, and persons who were 45 years or older had highest proportion linked to care (85%, 85%, and 84%, respectively). Persons with combined risks of Male-to-Male sex (MSM) and Injection drug use (IDU) had the lowest proportion for linkage to care (65%), followed by persons in other or unknown racial/ethnic group (74%), persons 13-24 years of age (75%), and African Americans (76%), and heterosexual IDUs (77%).

**Retention in Care:** In this report, continuous or successful retention in care is defined as having two

or more VL or CD4 + T-cell tests performed during a 12 month period at least 3 months apart.

For persons reported as living with HIV in Los Angeles County as of December 31, 2010 who were diagnosed with HIV prior to January 1, 2010 (n=42,237), 56% were retained in care during 2010 (Table 10). Asians/Pacific Island MSMs had the highest proportion for retention in care (63%), followed by Latino MSMs (61%) and foreign-born persons (59%). Persons 13-24 years of age and IDUs had the lowest proportions for retention in care (50% and 51%, respectively).

**HIV Viral Load Suppression:** In this report, viral load suppression is defined as having one or more VL tests performed in 2010 with a result indicating fewer than 200 copies of virus per milliliter of blood plasma.

For persons reported as living with HIV in Los Angeles County as of December 31, 2010, who were diagnosed with HIV prior to January 1, 2010 and who had one or more viral load tests results reported in 2010 (n= 27,982), 79% (n= 22,135) were virally suppressed. Highest proportion of viral suppression were seen among men (80%), persons over 65 years of age (90%), Whites and Asian/Pacific Islanders (85 and 84% respectively), men who have sex with men (80%) and the foreign born (83%). Lowest proportion of viral suppression was seen among persons 13-24 years of age (59%) and Black MSM (66%).

**Note well:** Measurements of linkage to care, retention in care and viral load suppression were based on reported dates of VL or CD4+ T-cell testing from either the provider report or laboratory test reports. Thus, their accuracy depends on the completeness of laboratory test reports. As of January 2013 when this analysis was conducted, we had imported all reported VL and CD4+ T-cell test results in 2010 that match to a case report in Enhanced HIV AIDS Reporting System (EHARS). Nevertheless, these measurements may have underestimated persons' visits for HIV care and the proportion of PLWH who were successfully retained in care. For example, a person might have paid a visit to a medical facility for HIV care and treatment but not received VL or CD4+ T-cell testing. Therefore, caution should be taken when interpreting these indicators.

**HIV/AIDS DIAGNOSES, DEATHS, AND PERSONS LIVING WITH HIV/AIDS  
LOS ANGELES COUNTY, CALIFORNIA, AND THE UNITED STATES**

	<b>Los Angeles County<sup>1</sup></b>	<b>California<sup>2</sup></b>	<b>United States<sup>3</sup></b>
<b>Diagnoses of HIV infection, 2011</b>	1,880	4,950	39,867 <sup>a</sup>
<b>Diagnoses of AIDS, 2011</b>	961	2,655	25,297 <sup>b</sup>
<b>Persons living with HIV infection, 2012</b>	45,474	117,695	788,966 <sup>c</sup>
<b>Persons living with AIDS, 2012</b>	26,563	72,980	478,862 <sup>d</sup>
<b>Cumulative deaths in persons with HIV infection</b>	34,641	95,267	--
<b>Cumulative deaths in persons with AIDS</b>	33,700	93,099	602,340 <sup>d</sup>
<b>Cumulative diagnoses of HIV infection, 1982-2012</b>	80,115	212,987	--
<b>Cumulative diagnoses of AIDS, 1982-2012</b>	60,263	166,106	1,106,499 <sup>e</sup>

<sup>1</sup> Includes all cases reported to the HIV Epidemiology, Division of HIV and STD Programs as of December 31, 2012.

<sup>2</sup> California Department of Public Health, Office of AIDS, HIV/AIDS Surveillance Section, data reported as of December 31, 2012.

<sup>3</sup> Centers for Disease Control and Prevention. HIV Surveillance Report, 2010; vol. 22.

(<http://www.cdc.gov/hiv/topics/surveillance/resources/reports/>. Published March 2012. Accessed 01/14/2013)

<sup>a</sup>. This number only included the diagnoses of HIV infection in 2010 in 46 states with confidential named-based HIV infection reporting since at least January 2007. Therefore, it should NOT be used as the denominator when estimating the proportion of cases from LAC or California.

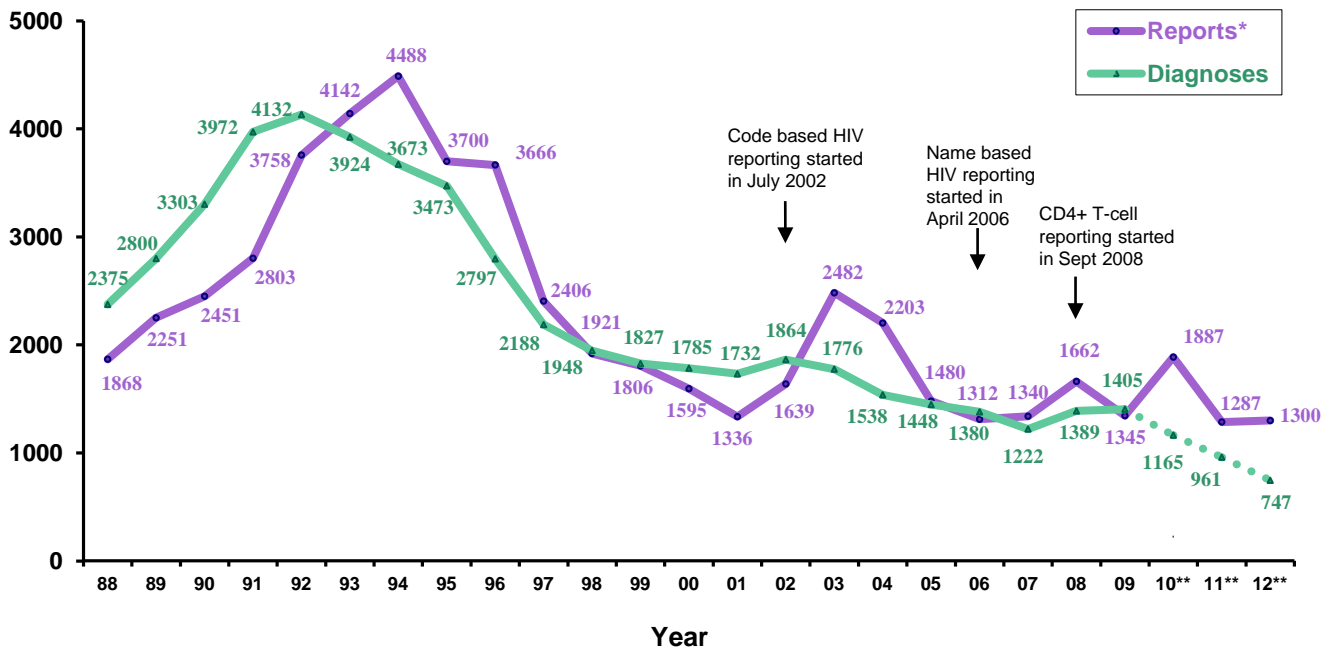
<sup>b</sup>. Diagnoses of AIDS in 2010.

<sup>c</sup>. Persons living with HIV infection as of 2009 in 46 states with confidential named-based HIV infection reporting since at least January 2007.

<sup>d</sup>. Cumulative deaths of person with an AIDS diagnosis and persons living with AIDS as of 2009.

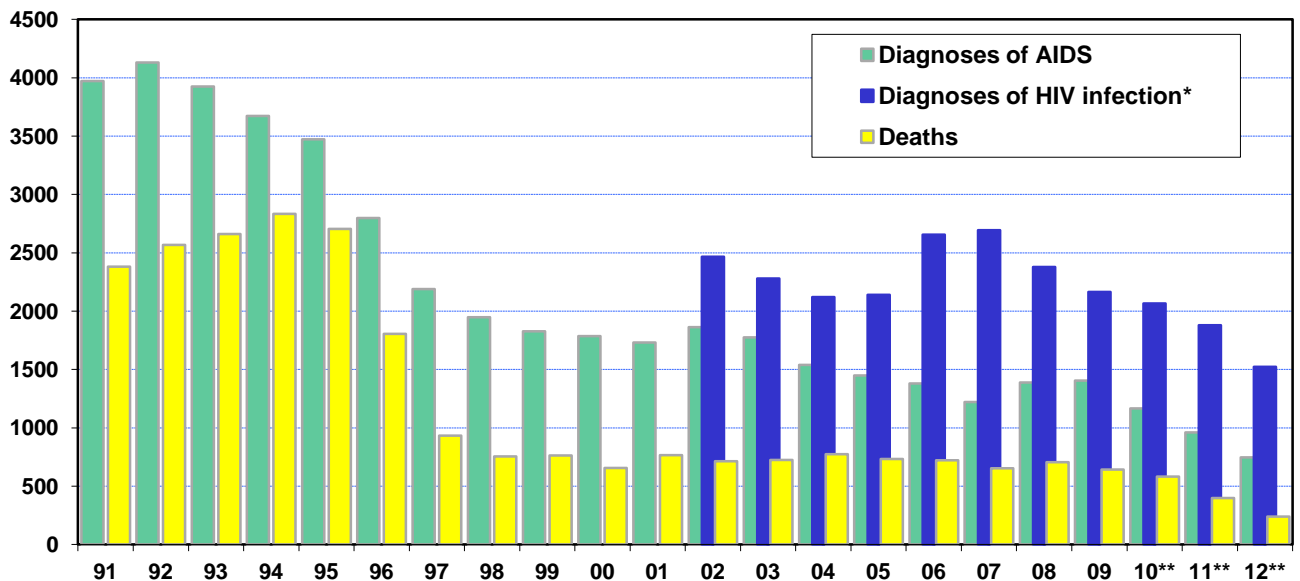
<sup>e</sup>. From the beginning of the epidemic through 2010.

**FIGURE 1. ANNUAL NUMBER OF AIDS DIAGNOSES AND AIDS REPORTS IN 1988-2012, LOS ANGELES COUNTY**



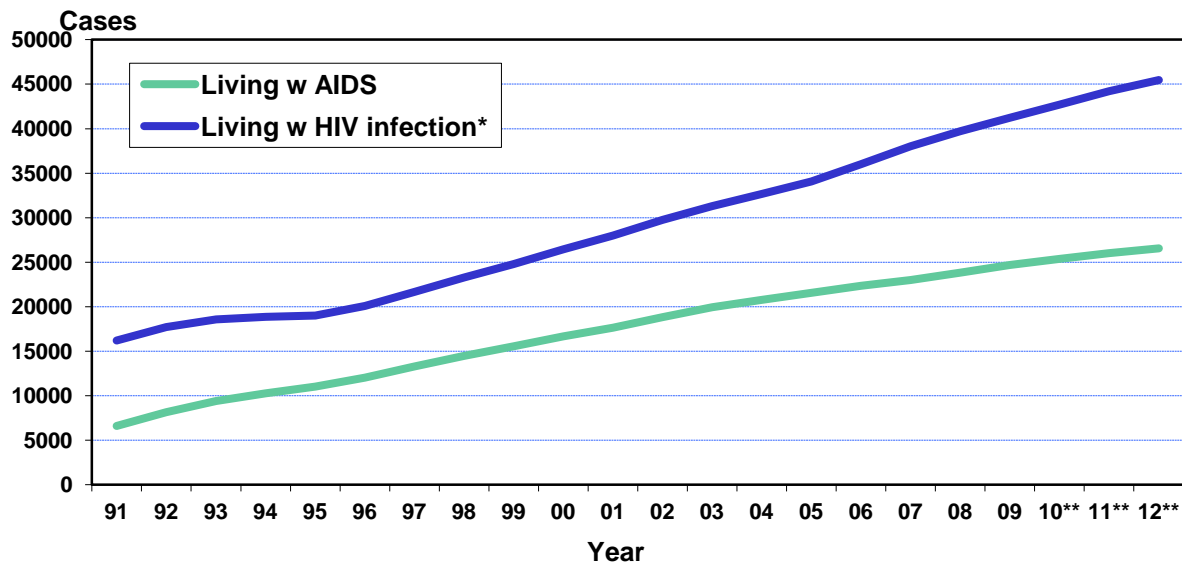
\* Number of cases reported is based on system entry date.  
 \*\* Cases diagnosed in 2010-2012 are provisional due to reporting delay.

**FIGURE 2. ANNUAL DIAGNOSES OF AIDS AND HIV INFECTION AND DEATHS OF PERSONS WITH HIV INFECTION, LOS ANGELES COUNTY, 1991-2012**



\* Code-based HIV reporting was implemented from July 1, 2002 to April 17, 2006, and name-based reporting started since April 17, 2006 in California. Data are based on named reports for persons with a diagnosis of HIV infection regardless of the disease stage at time of diagnosis.  
 \*\* Data are provisional for 2010-2012.

**FIGURE 3. PERSONS LIVING WITH HIV INFECTION AND AIDS BY YEAR, LOS ANGELES COUNTY, 1991-2012**



\* Data on persons living with HIV infection in year 2006 or earlier may be incomplete as non-AIDS HIV only became reportable by name in April 17, 2006. The number for living with HIV infection includes both HIV and AIDS cases.

\*\* Data are provisional for 2010-2012.

**TABLE 1. DIAGNOSES, DEATHS, AND PERSONS LIVING WITH A DIAGNOSIS OF HIV INFECTION AND AIDS BY YEAR, REPORTED BY DECEMBER 31, 2012, LOS ANGELES COUNTY**

Year	Diagnoses of AIDS	Diagnoses of HIV infection <sup>1</sup>	Deaths occurred <sup>2</sup>	Living with AIDS <sup>3</sup>	Living with HIV/AIDS <sup>4</sup>
1982 - 1990	13917		8926	4993	13867
1991	3972		2381	6584	16188
1992	4132		2568	8148	17702
1993	3924		2660	9412	18586
1994	3673		2833	10254	18846
1995	3473		2704	11027	19020
1996	2797		1806	12023	20083
1997	2188		933	13281	21669
1998	1948		755	14475	23287
1999	1827		763	15541	24792
2000	1785		655	16674	26434
2001	1732		766	17655	27997
2002	1864	2467	715	18835	29749
2003	1776	2279	724	19944	31304
2004	1538	2121	773	20781	32652
2005	1448	2141	734	21575	34059
2006	1380	2656	722	22332	35993
2007	1222	2694	654	23004	38033
2008	1389	2378	705	23824	39706
2009	1405	2165	643	24695	41228
2010 (5)	1165	2065	583	25378	42710
2011 (5)	961	1880	398	26022	44192
2012 (5)	747	1522	240	26563	45474
Cumulative	60263		34641		

1. Code-based HIV reporting was implemented from July 1, 2002 to April 17, 2006, and name-based reporting started since April 17, 2006 in California. Data are based on named reports for persons with a diagnosis of HIV infection regardless of the disease stage at time of diagnosis.

2. The number of deaths among persons of HIV infection is based on the date of death report when the actual year of death is unknown.

3. Includes persons living with AIDS at the end of each year.

4. Include persons living with HIV/AIDS at the end of each year.

5. Data are provisional due to reporting delay.

TABLE 2. CUMULATIVE HIV/AIDS DIAGNOSES BY GENDER, AGE, AND RACE/ETHNICITY  
 REPORTED BY DECEMBER 31, 2012  
 LOS ANGELES COUNTY

Age at Diagnosis (years)	Race/Ethnicity					Total (3) No. (%)
	White No. (%)	Black No. (%)	Hispanic/Latino No. (%)	Asian/PI (1) No. (%)	AI/AN (2) No. (%)	
<b>MALE</b>						
<13	56 (<1)	89 (1)	126 (1)	6 (<1)	<5 (-)	283 (<1)
13-19	233 (1)	352 (3)	550 (2)	27 (1)	12 (4)	1195 (2)
20-29	5989 (19)	3503 (26)	7756 (31)	460 (24)	109 (34)	18053 (25)
30-39	12889 (42)	5117 (38)	9867 (40)	763 (41)	108 (34)	29099 (40)
40-49	7955 (26)	3149 (23)	4583 (18)	450 (24)	62 (20)	16397 (23)
50-59	2869 (9)	1077 (8)	1431 (6)	141 (7)	17 (5)	5603 (8)
60+	899 (3)	294 (2)	461 (2)	35 (2)	<5 (-)	1718 (2)
Male subtotal	30890	13581	24774	1882	316	72348
[% of subtotal]	[ 43]	[ 19]	[ 34]	[ 3]	[ <1]	[100]
<b>FEMALE</b>						
<13	31 (2)	77 (3)	126 (4)	7 (4)	<5 (-)	243 (3)
13-19	41 (3)	119 (4)	148 (5)	<5 (-)	<5 (-)	314 (4)
20-29	325 (23)	691 (24)	949 (30)	39 (20)	11 (24)	2037 (26)
30-39	474 (34)	968 (34)	961 (31)	69 (35)	11 (24)	2512 (32)
40-49	308 (22)	662 (23)	544 (17)	47 (24)	16 (35)	1589 (20)
50-59	141 (10)	297 (10)	303 (10)	22 (11)	5 (11)	778 (10)
60+	91 (6)	74 (3)	116 (4)	9 (5)	<5 (-)	294 (4)
Female subtotal	1411	2888	3147	195	46	7767
[% of subtotal]	[ 18]	[ 37]	[ 41]	[ 3]	[ 1]	[100]
<b>BOTH</b>						
<13	87 (<1)	166 (1)	252 (1)	13 (1)	<5 (-)	526 (1)
13-19	274 (1)	471 (3)	698 (2)	29 (1)	13 (4)	1509 (2)
20-29	6314 (20)	4194 (25)	8705 (31)	499 (24)	120 (33)	20090 (25)
30-39	13363 (41)	6085 (37)	10828 (39)	832 (40)	119 (33)	31611 (39)
40-49	8263 (26)	3811 (23)	5127 (18)	497 (24)	78 (22)	17986 (22)
50-59	3010 (9)	1374 (8)	1734 (6)	163 (8)	22 (6)	6381 (8)
60+	990 (3)	368 (2)	577 (2)	44 (2)	6 (2)	2012 (3)
Total	32301	16469	27921	2077	362	80115
[% of total]	[ 40]	[ 21]	[ 35]	[ 3]	[ <1]	[100]

1. Includes 16 Burmese, 86 Cambodian, 169 Chinese, 525 Filipino, 17 Guamanian, 36 Hawaiian, 36 Asian Indian, 36 Indonesian, 172 Japanese, 84 Korean, <5 Laotian, 15 Malayan, 18 Pacific Islander, 6 Pakistani, 35 Samoan, 6 Singaporean, <5 Bangladeshi, 7 Sri Lankan, 5 East Indian, <5 Tahitian, 46 Taiwanese, 151 Thai, <5 Tongan, and 155 Vietnamese; 445 are of unknown Asian ethnicity.

2. AI/AN=American Indian/Alaska Native.

3. Total includes persons who have multiple races/ethnicities or have missing information on race/ethnicity.

TABLE 3. CUMULATIVE HIV/AIDS DIAGNOSES AMONG ADULTS/ADOLESCENTS BY GENDER, TRANSMISSION CATEGORY, AND RACE/ETHNICITY  
 REPORTED BY DECEMBER 31, 2012  
 LOS ANGELES COUNTY

Adult/Adolescent Transmission Category (1)	Race/Ethnicity					Total (3) No. (%)
	White No. (%)	Black No. (%)	Hispanic/Latino No. (%)	Asian/PI No. (%)	AI/AN (2) No. (%)	
<b>MALE</b>						
Male-male sexual contact	26993 ( 88)	10366 ( 77)	21040 ( 85)	1715 ( 91)	231 ( 74)	61062 ( 85)
Injection drug user (IDU)	933 ( 3)	1287 ( 10)	1207 ( 5)	31 ( 2)	14 ( 5)	3528 ( 5)
Male-male sexual contact/IDU	2488 ( 8)	1320 ( 10)	1533 ( 6)	66 ( 4)	64 ( 20)	5586 ( 8)
Hemophilia/coagulation disorder	90 ( <1)	24 ( <1)	39 ( <1)	9 ( <1)	<5 ( -)	162 ( <1)
Heterosexual contact	205 ( 1)	459 ( 3)	761 ( 3)	40 ( 2)	<5 ( -)	1481 ( 2)
Transfusion recipient	125 ( <1)	36 ( <1)	68 ( <1)	16 ( 1)	<5 ( -)	246 ( <1)
Male subtotal	30834	13492	24648	1876	312	72065
[% of subtotal]	[ 43]	[ 19]	[ 34]	[ 3]	[ <1]	[100]
<b>FEMALE</b>						
Injection drug user (IDU)	562 ( 41)	873 ( 31)	531 ( 18)	24 ( 13)	19 ( 42)	2040 ( 27)
Hemophilia/coagulation disorder	9 ( 1)	5 ( <1)	5 ( <1)	<5 ( -)	<5 ( -)	20 ( <1)
Heterosexual contact	738 ( 54)	1890 ( 67)	2418 ( 80)	153 ( 81)	26 ( 56)	5271 ( 70)
Transfusion recipient	69 ( 5)	42 ( 1)	67 ( 2)	11 ( 6)	<5 ( -)	190 ( 3)
Perinatal exposure	<5 ( -)	<5 ( -)	<5 ( -)	<5 ( -)	<5 ( -)	<5 ( -)
Other/Undetermined	<5 ( -)	<5 ( -)	<5 ( -)	<5 ( -)	<5 ( -)	<5 ( -)
Female subtotal	1380	2811	3021	188	46	7524
[% of subtotal]	[ 18]	[ 37]	[ 40]	[ 2]	[ 1]	[100]
<b>BOTH</b>						
Male-male sexual contact	26993 ( 84)	10366 ( 64)	21040 ( 76)	1715 ( 83)	231 ( 64)	61062 ( 77)
Injection drug user (IDU)	1495 ( 5)	2159 ( 13)	1738 ( 6)	55 ( 3)	34 ( 9)	5568 ( 7)
Male-male sexual contact/IDU	2488 ( 8)	1320 ( 8)	1533 ( 6)	66 ( 3)	64 ( 18)	5586 ( 7)
Hemophilia/coagulation disorder	99 ( <1)	29 ( <1)	44 ( <1)	9 ( <1)	<5 ( -)	182 ( <1)
Heterosexual contact	943 ( 3)	2349 ( 14)	3179 ( 11)	192 ( 9)	28 ( 8)	6752 ( 8)
Transfusion recipient	194 ( 1)	78 ( <1)	135 ( <1)	27 ( 1)	<5 ( -)	436 ( 1)
Perinatal exposure	<5 ( -)	<5 ( -)	<5 ( -)	<5 ( -)	<5 ( -)	<5 ( -)
Other/Undetermined	<5 ( -)	<5 ( -)	<5 ( -)	<5 ( -)	<5 ( -)	<5 ( -)
Total	32214	16303	27669	2064	358	79589
[% of total]	[ 40]	[ 20]	[ 35]	[ 3]	[ <1]	[100]

1. Persons without an identified risk factor are assigned a risk factor using multiple imputation (MI) methods (see technical notes).
2. AI/AN=American Indian/Alaska Native.
3. Total includes persons who have multiple races/ethnicities or have missing information on race/ethnicity.

TABLE 4. CUMULATIVE HIV/AIDS DIAGNOSES AMONG CHILDREN <13 YEARS OF AGE  
 BY TRANSMISSION CATEGORY, AND RACE/ETHNICITY  
 REPORTED BY DECEMBER 31, 2012  
 LOS ANGELES COUNTY

Pediatric (<13 years) Transmission Category (1)	Race/Ethnicity					Total No. (%)
	White No. (%)	Black No. (%)	Hispanic/Latino No. (%)	Other (2) No. (%)		
Perinatal exposure	45 ( 52)	135 ( 81)	194 ( 77)	8 ( 47)	384 ( 73)	
Hemophilia or coagulation disorder	13 ( 15)	2 ( 1)	12 ( 5)	2 ( 12)	29 ( 6)	
Transfusion recipient	27 ( 31)	24 ( 14)	33 ( 13)	7 ( 41)	93 ( 18)	
Other/Undetermined	2 ( 2)	5 ( 3)	13 ( 5)	0 ( 0)	20 ( 4)	
<b>Total</b>	<b>87</b>	<b>166</b>	<b>252</b>	<b>17</b>	<b>526</b>	
[% of total]	[ 17]	[ 32]	[ 48]	[ 3]	[100]	

1. See technical notes for information on transmission category.
2. Other includes Asian, Pacific Islander, American Indian and Alaskan Native.

TABLE 5. HIV/AIDS DIAGNOSES AMONG CHILDREN <13 YEARS OF AGE  
 BY RACE/ETHNICITY, TRANSMISSING CATEGORY, AND YEAR OF HIV DIAGNOSIS  
 REPORTED BY DECEMBER 31, 2012  
 LOS ANGELES COUNTY

Pediatric (<13 years)	Year of Diagnosis					
	Before 2008 No. (%)	2008 No. (%)	2009 No. (%)	2010 (1) No. (%)	2011 (1) No. (%)	2012 (1) No. (%)
<b>RACE/ETHNICITY</b>						
White	86 ( 17)	0 ( 0)	0 ( -)	0 ( 0)	0 ( 0)	1 ( 33)
Black	159 ( 31)	1 ( 33)	0 ( -)	2 ( 33)	2 (100)	2 ( 67)
Hispanic/Latino	248 ( 48)	1 ( 33)	0 ( -)	3 ( 50)	0 ( 0)	0 ( 0)
Other(2)	15 ( 3)	1 ( 33)	0 ( -)	1 ( 17)	0 ( 0)	0 ( 0)
<b>TRANSMISSION CATEGORY (3)</b>						
Perinatal exposure (4)	371 ( 72)	3 (100)	0 ( -)	6 (100)	2 (100)	2 ( 67)
Hemophilia/coagulation disorder	29 ( 6)	0 ( 0)	0 ( -)	0 ( 0)	0 ( 0)	0 ( 0)
Transfusion recipient	93 ( 18)	0 ( 0)	0 ( -)	0 ( 0)	0 ( 0)	0 ( 0)
Other/Undetermined	19 ( 4)	0 ( 0)	0 ( -)	0 ( 0)	0 ( 0)	1 ( 33)
<b>Total</b>	<b>512</b>	<b>3</b>	<b>0</b>	<b>6</b>	<b>2</b>	<b>3</b>
[% of total]	[ 97]	[ 1]	[ 0]	[ 1]	[ <1]	[ 1]

1. Data are provisional due to reporting delay.
2. Other includes Asian, Pacific Islander, American Indian and Alaskan Native.
3. See technical notes for information on transmission category.
4. Year of diagnosis may not indicate year of birth, nor indicate perinatal case was born in Los Angeles County.



TABLE 6. HIV/AIDS DIAGNOSES AND RATES PER 100,000 (1) BY GENDER, AGE, RACE/ETHNICITY, TRANSMISSION CATEGORY, SERVICE PLANNING AREA (SPA) AND YEAR OF HIV DIAGNOSIS  
 REPORTED BY DECEMBER 31, 2012  
 LOS ANGELES COUNTY

	Year of Diagnosis																	
	2007			2008			2009			2010 (2)		2011 (2)		2012 (2)				
	No.	(%)	Rate	No.	(%)	Rate	No.	(%)	Rate	No.	(%)	Rate	No.	(%)	Rate			
<b>GENDER</b>																		
Male	2323	(86)	45	2091	(88)	41	1879	(87)	36	1816	(88)	35	1665	(89)	32	1357	(89)	26
Female	346	(13)	7	268	(11)	5	260	(12)	5	230	(11)	4	179	(10)	3	140	(9)	3
Transgender(3)	25	(1)	-	19	(1)	-	26	(1)	-	19	(1)	-	36	(2)	-	25	(2)	-
<b>AGE GROUP</b>																		
<13	6	(<1)	<1	<5	(-)	-	<5	(-)	-	6	(<1)	<1	<5	(-)	-	<5	(-)	-
13-19	69	(3)	6	70	(3)	6	78	(4)	7	78	(4)	7	49	(3)	4	54	(4)	5
20-29	771	(29)	53	697	(29)	48	657	(30)	45	653	(32)	44	638	(34)	43	533	(35)	36
30-39	826	(31)	53	704	(30)	46	642	(30)	42	589	(29)	39	567	(30)	37	413	(27)	27
40-49	688	(26)	44	586	(25)	38	501	(23)	32	477	(23)	31	393	(21)	25	341	(22)	22
50-59	263	(10)	22	245	(10)	20	222	(10)	18	209	(10)	17	186	(10)	15	137	(9)	11
60+	71	(3)	5	73	(3)	5	65	(3)	4	53	(3)	3	45	(2)	3	41	(3)	3
<b>RACE/ETHNICITY</b>																		
White	739	(27)	24	630	(26)	20	529	(24)	17	509	(25)	16	443	(24)	14	369	(24)	12
Black	622	(23)	66	588	(25)	62	510	(24)	54	491	(24)	52	444	(24)	47	331	(22)	35
Hispanic/Latino	1164	(43)	24	1001	(42)	20	1002	(46)	20	939	(45)	19	866	(46)	18	726	(48)	15
Asian/PI	114	(4)	8	108	(5)	8	87	(4)	6	78	(4)	6	88	(5)	6	73	(5)	5
AI/AN	8	(<1)	26	12	(1)	42	13	(1)	47	12	(1)	43	13	(1)	47	9	(1)	33
<b>TRANSMISSION CATEGORY(3,4)</b>																		
MSM	2113	(78)	-	1900	(80)	-	1759	(81)	-	1685	(82)	-	1595	(85)	-	1291	(85)	-
IDU	131	(5)	-	111	(5)	-	80	(4)	-	82	(4)	-	61	(3)	-	52	(3)	-
MSM/IDU	118	(4)	-	107	(5)	-	80	(4)	-	71	(3)	-	57	(3)	-	48	(3)	-
Hemophi/Transfusion	<5	(-)	-	<5	(-)	-	<5	(-)	-	<5	(-)	-	<5	(-)	-	<5	(-)	-
Heterosexual contact	326	(12)	-	255	(11)	-	245	(11)	-	221	(11)	-	165	(9)	-	128	(8)	-
Perinatal exposure	6	(<1)	-	<5	(-)	-	<5	(-)	-	6	(<1)	-	<5	(-)	-	<5	(-)	-
Other/Undetermined	<5	(-)	-	<5	(-)	-	<5	(-)	-	<5	(-)	-	<5	(-)	-	<5	(-)	-
<b>SERVICE PLANNING AREA</b>																		
Antelope Valley[1]	46	(2)	13	59	(2)	16	57	(3)	16	48	(2)	13	36	(2)	10	33	(2)	9
San Fernando[2]	388	(14)	18	336	(14)	15	293	(14)	13	240	(12)	11	250	(13)	11	190	(12)	9
San Gabriel[3]	223	(8)	12	176	(7)	9	169	(8)	9	141	(7)	7	146	(8)	8	123	(8)	7
Metro[4]	1002	(37)	79	862	(36)	69	779	(36)	63	768	(37)	62	612	(33)	49	526	(35)	42
West[5]	129	(5)	20	101	(4)	16	89	(4)	14	104	(5)	16	88	(5)	14	79	(5)	12
South[6]	309	(11)	30	316	(13)	30	279	(13)	27	258	(12)	25	270	(14)	26	170	(11)	16
East[7]	193	(7)	14	175	(7)	13	156	(7)	11	165	(8)	12	169	(9)	12	128	(8)	9
South Bay/LB[8]	402	(15)	25	349	(15)	22	340	(16)	21	338	(16)	21	308	(16)	19	262	(17)	16
<b>Total (5)</b>	<b>2694</b>	<b>(100)</b>	<b>26</b>	<b>2378</b>	<b>(100)</b>	<b>23</b>	<b>2165</b>	<b>(100)</b>	<b>21</b>	<b>2065</b>	<b>(100)</b>	<b>20</b>	<b>1880</b>	<b>(100)</b>	<b>18</b>	<b>1522</b>	<b>(100)</b>	<b>15</b>

1. Rates for 2010-2012 are based on year 2009 population estimates. Rates that are based on observations fewer than 12 may not be Reliable (see Technical Notes).
2. Data are provisional due to reporting delay.
3. Rates for transgender and transmission category are not calculated, because of the lack of denominator data.
4. Persons without an identified risk factor are assigned a risk factor using multiple imputation (MI) methods (see technical notes).
5. Total includes persons who have multiple race/ethnicities or have missing information on race/ethnicity or SPA.

TABLE 7. HIV/AIDS DIAGNOSES AND RATES (1) PER 100,000  
 BY SERVICE PLANNING AREA/HEALTH DISTRICT (2) OF RESIDENCE, AND YEAR OF HIV DIAGNOSIS  
 REPORTED BY DECEMBER 31, 2012  
 LOS ANGELES COUNTY

Service Planning Area/ Health District	Year of Diagnosis										Cumulative 1982-2012 No. (%)	
	2008		2009		2010 (3)		2011 (3)		2012 (3)			
	No.	(%) Rate	No.	(%) Rate	No.	(%) Rate	No.	(%) Rate	No.	(%) Rate		
Antelope Valley[1]	59	( 2) 16	57	( 3) 16	48	( 2) 13	36	( 2) 10	33	( 2) 9	940	( 1)
Antelope Valley	59	( 2) 16	57	( 3) 16	48	( 2) 13	36	( 2) 10	33	( 2) 9	940	( 1)
San Fernando[2]	336	( 14) 15	293	( 14) 13	240	( 12) 11	250	( 13) 11	190	( 12) 9	11482	( 14)
East Valley	122	( 5) 26	88	( 4) 19	72	( 3) 15	87	( 5) 19	70	( 5) 15	4269	( 5)
Glendale	36	( 2) 10	43	( 2) 12	23	( 1) 6	23	( 1) 6	19	( 1) 5	1700	( 2)
San Fernando	42	( 2) 9	34	( 2) 7	37	( 2) 8	38	( 2) 8	22	( 1) 5	1170	( 1)
West Valley	136	( 6) 15	128	( 6) 14	108	( 5) 12	102	( 5) 11	79	( 5) 9	4343	( 5)
San Gabriel[3]	176	( 7) 9	169	( 8) 9	141	( 7) 7	146	( 8) 8	123	( 8) 7	5764	( 7)
Alhambra	19	( 1) 5	24	( 1) 7	25	( 1) 7	24	( 1) 7	22	( 1) 6	943	( 1)
El Monte	50	( 2) 10	42	( 2) 9	35	( 2) 7	36	( 2) 8	31	( 2) 6	1333	( 2)
Foothill	27	( 1) 9	32	( 1) 10	23	( 1) 7	28	( 1) 9	16	( 1) 5	980	( 1)
Pasadena	32	( 1) 21	28	( 1) 18	15	( 1) 10	10	( 1) 7	18	( 1) 12	976	( 1)
Pomona	48	( 2) 8	43	( 2) 7	43	( 2) 7	48	( 3) 8	36	( 2) 6	1532	( 2)
Metro[4]	862	( 36) 69	779	( 36) 63	768	( 37) 62	612	( 33) 49	526	( 35) 42	31148	( 39)
Central	395	( 17) 107	323	( 15) 88	267	( 13) 72	193	( 10) 52	188	( 12) 51	10097	( 13)
Hollywood-Wilshire	396	( 17) 74	377	( 17) 71	416	( 20) 79	359	( 19) 68	289	( 19) 55	17878	( 22)
Northeast	71	( 3) 20	79	( 4) 23	85	( 4) 24	60	( 3) 17	49	( 3) 14	3173	( 4)
West[5]	101	( 4) 16	89	( 4) 14	104	( 5) 16	88	( 5) 14	79	( 5) 12	4625	( 6)
West	101	( 4) 16	89	( 4) 14	104	( 5) 16	88	( 5) 14	79	( 5) 12	4625	( 6)
South[6]	316	( 13) 30	279	( 13) 27	258	( 12) 25	270	( 14) 26	170	( 11) 16	8302	( 10)
Compton	61	( 3) 21	44	( 2) 15	54	( 3) 19	61	( 3) 21	28	( 2) 10	1505	( 2)
South	56	( 2) 29	52	( 2) 27	43	( 2) 22	50	( 3) 26	35	( 2) 18	1429	( 2)
Southeast	48	( 2) 26	47	( 2) 25	39	( 2) 21	35	( 2) 19	27	( 2) 15	1182	( 1)
Southwest	151	( 6) 39	136	( 6) 36	122	( 6) 32	124	( 7) 32	80	( 5) 21	4186	( 5)
East[7]	175	( 7) 13	156	( 7) 11	165	( 8) 12	169	( 9) 12	128	( 8) 9	4841	( 6)
Bellflower	40	( 2) 11	32	( 1) 9	40	( 2) 11	34	( 2) 9	27	( 2) 7	953	( 1)
East Los Angeles	31	( 1) 14	31	( 1) 14	30	( 1) 14	32	( 2) 14	23	( 2) 10	1050	( 1)
San Antonio	58	( 2) 13	64	( 3) 14	65	( 3) 14	65	( 3) 14	47	( 3) 10	1764	( 2)
Whittier	46	( 2) 14	29	( 1) 9	30	( 1) 9	38	( 2) 11	31	( 2) 9	1074	( 1)
South Bay[8]	349	( 15) 22	340	( 16) 21	338	( 16) 21	308	( 16) 19	262	( 17) 16	12769	( 16)
Harbor	14	( 1) 7	17	( 1) 8	36	( 2) 17	19	( 1) 9	16	( 1) 7	777	( 1)
Inglewood	96	( 4) 22	84	( 4) 19	106	( 5) 24	83	( 4) 19	59	( 4) 14	2654	( 3)
Long Beach	205	( 9) 41	192	( 9) 39	153	( 7) 31	170	( 9) 34	166	( 11) 33	7904	( 10)
Torrance	34	( 1) 7	47	( 2) 10	43	( 2) 9	36	( 2) 8	21	( 1) 4	1434	( 2)
<b>Total (4)</b>	<b>2378</b>	<b>(100) 23</b>	<b>2165</b>	<b>(100) 21</b>	<b>2065</b>	<b>(100) 20</b>	<b>1880</b>	<b>(100) 18</b>	<b>1522</b>	<b>(100) 15</b>	<b>80115</b>	<b>(100)</b>

1. Rates are based on population estimates from 2008-2009. Rates for 2010-2012 are calculated using population estimates for 2009. Rates based on observations fewer than 12 may not be reliable (see Technical Notes).
2. Service Planning Area and Health District boundaries are based on the newly released definition as of 2011.
3. Data are provisional due to reporting delay.
4. Total includes persons with no information on Service Planning Area/Health District.

TABLE 8. HIV/AIDS DIAGNOSES AND RATES PER 100,000 (1,2) BY YEAR OF HIV DIAGNOSIS AND CITY/AREA (3) OF RESIDENCE  
TOP 35 CITIES (4) RANKED BY 2011 RATE, REPORTED BY DECEMBER 31, 2012  
LOS ANGELES COUNTY

City/Area	Year of Diagnosis				
	2008 No. (Rate)	2009 No. (Rate)	2010 (1) No. (Rate)	2011 (1) No. (Rate)	2012 (1) No. (Rate)
West Hollywood	98 (261.0)	85 (225.8)	100 (265.7)	74 (196.6)	57 (151.4)
Wholesale (5)	201 (347.3)	170 (295.5)	124 (215.5)	58 (100.8)	37 ( 64.3)
Hollywood	204 ( 85.5)	205 ( 88.7)	192 ( 83.1)	212 ( 91.7)	151 ( 65.3)
Downtown	27 (121.7)	18 ( 79.1)	24 (105.5)	11 ( 48.4)	20 ( 87.9)
Graham	15 ( 49.9)	6 ( 19.8)	7 ( 23.1)	12 ( 39.6)	11 ( 36.3)
Silverlake/Chinatown	54 ( 63.8)	40 ( 47.3)	37 ( 43.8)	31 ( 36.7)	24 ( 28.4)
Wilshire Center S	18 ( 18.2)	29 ( 29.5)	32 ( 32.5)	35 ( 35.6)	24 ( 24.4)
Long Beach	190 ( 38.4)	180 ( 36.3)	144 ( 29.0)	168 ( 33.9)	157 ( 31.7)
Willowbrook	20 ( 51.3)	8 ( 21.1)	16 ( 42.2)	12 ( 31.6)	<5 ( - )
W Adams-Expo Park	48 ( 35.0)	37 ( 26.9)	38 ( 27.6)	43 ( 31.2)	30 ( 21.8)
Miracle Mile S	19 ( 37.4)	9 ( 17.4)	30 ( 58.0)	16 ( 31.0)	16 ( 31.0)
Westlake	47 ( 34.4)	41 ( 30.1)	44 ( 32.3)	42 ( 30.8)	64 ( 47.0)
Crenshaw	42 ( 58.2)	34 ( 47.4)	35 ( 48.8)	22 ( 30.7)	21 ( 29.3)
Vermont Square	29 ( 37.5)	36 ( 46.6)	32 ( 41.5)	23 ( 29.8)	15 ( 19.4)
North Hollywood	52 ( 38.6)	36 ( 26.5)	32 ( 23.5)	40 ( 29.4)	39 ( 28.7)
Inglewood	37 ( 31.1)	35 ( 29.4)	38 ( 31.9)	33 ( 27.7)	24 ( 20.2)
N Shoestring	<5 ( - )	<5 ( - )	7 ( 31.9)	6 ( 27.3)	<5 ( - )
Cudahy	<5 ( - )	<5 ( - )	<5 ( - )	7 ( 27.0)	<5 ( - )
Venice	5 ( 12.6)	9 ( 22.1)	7 ( 17.2)	11 ( 27.0)	<5 ( - )
Watts	10 ( 24.8)	9 ( 21.8)	7 ( 16.9)	11 ( 26.6)	<5 ( - )
Miracle Mile N	25 ( 55.1)	15 ( 31.9)	26 ( 55.3)	12 ( 25.5)	16 ( 34.0)
Adams-La Brea	14 ( 24.0)	23 ( 39.6)	20 ( 34.5)	14 ( 24.1)	5 ( 8.6)
Highland Park	10 ( 14.9)	9 ( 13.3)	7 ( 10.3)	16 ( 23.6)	6 ( 8.8)
Boyle Heights	28 ( 28.8)	25 ( 26.7)	28 ( 29.9)	22 ( 23.5)	17 ( 18.2)
Wilshire Center N	27 ( 31.2)	28 ( 32.3)	27 ( 31.1)	20 ( 23.1)	24 ( 27.7)
Lynwood	13 ( 17.5)	10 ( 13.5)	12 ( 16.2)	17 ( 22.9)	<5 ( - )
S Vermont	40 ( 37.5)	38 ( 35.9)	32 ( 30.3)	23 ( 21.7)	19 ( 18.0)
Los Feliz	19 ( 42.1)	21 ( 45.6)	11 ( 23.9)	10 ( 21.7)	14 ( 30.4)
Huntington Park	7 ( 10.8)	13 ( 20.1)	17 ( 26.3)	14 ( 21.6)	10 ( 15.5)
Studio City	18 ( 33.0)	16 ( 28.4)	12 ( 21.3)	12 ( 21.3)	10 ( 17.7)
Pico Rivera	12 ( 17.5)	8 ( 11.6)	8 ( 11.6)	14 ( 20.4)	7 ( 10.2)
Palms	19 ( 30.6)	10 ( 16.0)	6 ( 9.6)	12 ( 19.2)	6 ( 9.6)
Central Av-South Park	33 ( 24.8)	25 ( 18.4)	21 ( 15.4)	26 ( 19.1)	25 ( 18.4)
Paramount	7 ( 12.1)	5 ( 8.6)	6 ( 10.4)	11 ( 19.0)	5 ( 8.6)
Van Nuys-Sherman Oaks	60 ( 28.2)	50 ( 23.1)	37 ( 17.1)	41 ( 18.9)	28 ( 12.9)

1. Data are provisional due to reporting delay.
2. Rates are based on population estimates for 2008-2009. Rates for 2010-2012 are calculated using population estimates for 2009. Rates based on observation fewer than 12 may not be reliable (see Technical Notes).
3. The city of Los Angeles is broken down into "areas" or geographic units with more than 15,000 residents. Cities and areas are approximately defined by aggregating the associated census tracts based on the location of their centroid.
4. Includes cities and areas that had more than 15,000 residents and at least 5 persons diagnosed with HIV/AIDS in 2011.
5. Includes persons diagnosed with HIV/AIDS during incarceration at Los Angeles County Central Jail.

TABLE 9. NEW HIV DIAGNOSES IN 2009-2011, PERSONS LIVING WITH HIV/AIDS, AND CUMULATIVE HIV/AIDS CASES AMONG AMERICAN INDIAN/ALASKAN NATIVE BY GENDER, AGE, AND TRANSMISSION CATEGORY REPORTED BY DECEMBER 31, 2012  
LOS ANGELES COUNTY

	HIV Diagnoses, 2009-2011(1)		Living with HIV/AIDS, 2012(1)		Cumulative, 1982-2012(1)	
	AI/AN(2)	Other Race(3)	AI/AN(2)	Other Race(3)	AI/AN(2)	Other Race(3)
	No. (%)	No. (%)	No. (%)	No. (%)	No. (%)	No. (%)
<b>GENDER</b>						
Male	34 ( 89)	5401 ( 89)	184 ( 87)	40131 ( 89)	316 ( 87)	72032 ( 90)
Female	<5 ( -)	671 ( 11)	28 ( 13)	5131 ( 11)	46 ( 13)	7721 ( 10)
<b>AGE GROUP(4)</b>						
<30	14 ( 37)	2147 ( 35)	24 ( 11)	3819 ( 8)	137 ( 38)	21988 ( 28)
30-49	23 ( 61)	3146 ( 52)	121 ( 57)	23469 ( 52)	197 ( 54)	49400 ( 62)
50+	<5 ( -)	779 ( 13)	67 ( 32)	17974 ( 40)	28 ( 8)	8365 ( 10)
<b>TRANSMISSION CATEGORY(5)</b>						
MSM	28 ( 73)	5011 ( 83)	136 ( 64)	34781 ( 77)	231 ( 64)	60831 ( 76)
IDU	<5 ( -)	221 ( 4)	12 ( 6)	2430 ( 5)	34 ( 9)	5535 ( 7)
MSM/IDU	<5 ( -)	204 ( 3)	39 ( 18)	2865 ( 6)	64 ( 18)	5522 ( 7)
Heterosexual contact	<5 ( -)	627 ( 10)	21 ( 10)	4773 ( 11)	28 ( 8)	6724 ( 8)
Other/Undetermined(6)	<5 ( -)	8 (<1)	<5 ( -)	413 ( 1)	6 ( 2)	1141 ( 1)
<b>Total</b>	<b>38 (100)</b>	<b>6072 (100)</b>	<b>212 (100)</b>	<b>45262 (100)</b>	<b>362 (100)</b>	<b>79753 (100)</b>

1. Data are provisional due to reporting delay.
2. A person is considered to be American Indian/Alaskan Native if he/she is identified as an AI/AN in one of the race fields and there is no indication of Hispanic ethnicity.
3. Other race includes White, Black, Hispanic/Latino, Asian/Pacific Islander, and persons with multiple or missing information on race/ethnicity.
4. For HIV diagnoses in 2009-2011 and cumulative cases, the age is as the time of HIV diagnosis. For persons living with HIV/AIDS, the age is as of December 31, 2012.
5. Persons without an identified risk factor are assigned a risk factor using multiple imputation (MI) methods (see technical notes).
6. Other risks include hemophilia or coagulation disorder, transfusion recipient, perinatal exposure and confirmed other risk.

**Table 10. Linkage to care among adults/adolescents with an HIV diagnosis in 2010 and retention in care among adults/adolescents living with an HIV Infection<sup>1</sup> as of 2010, data as of 12/31/2012, Los Angeles County**

Characteristics	Adults/adolescents diagnosed with HIV infection in 2010		Linked to care in 3 months <sup>2</sup>		Adults and adolescents living with HIV as of 2010 <sup>3</sup> (Overall Population)	Retained in care in 2010 <sup>4</sup>		No. of persons with ≥ 1 VL test in 2010	Viral Suppression (VL < 200)			
	No.	No.	%	No.		No.	%		No.	Total	Among overall population	Among persons with ≥ 1 VL test
										No.	%	%
<b>Sex</b>												
Male	1,943	1,548	79.7		37,394	21,116	56.5	24,847	19,746	52.8	79.5	
Female	249	192	77.1		4,843	2,715	56.1	3,135	2,389	49.3	76.2	
<b>Age in years</b>												
13-24	406	305	75.1		1,370	687	50.2	840	494	36.1	58.8	
25-44	1,267	1,000	78.9		19,053	10,516	55.2	12,589	9,411	49.4	74.8	
45-64	488	409	83.8		20,385	11,807	57.9	13,644	11,413	56.0	83.7	
≥ 65	31	26	83.9		1,429	821	57.5	909	817	57.2	89.9	
<b>Race/ethnicity</b>												
Black/African American	523	398	76.1		8,761	4,610	52.6	5,548	3,787	43.2	68.3	
Hispanic/Latino	983	782	79.6		16,760	9,856	58.8	11,177	8,949	53.4	80.1	
White	553	452	81.7		14,611	8,092	55.4	9,762	8,211	56.2	84.1	
Asian/Pacific Islander	82	69	84.2		1,284	791	61.6	901	769	59.9	85.4	
Other <sup>5</sup>	53	39	73.6		821	482	58.7	594	419	51.0	70.5	
<b>Transmission Category</b>												
Male-to-male sexual contact (MSM)	1,410	1,163	82.5		28,050	16,208	57.8	19,137	15,346	54.7	80.2	
Black/African American	280	222	79.3		4,584	2,471	53.9	2,995	1,986	43.3	66.3	
Hispanic/Latino	619	513	82.9		10,610	6,433	60.6	7,357	5,915	55.8	80.4	
White	412	349	84.7		11,434	6,434	56.3	7,756	6,613	57.8	85.3	
Asian/Pacific Islander	66	56	84.9		910	571	62.8	658	559	61.4	85.0	
Injection drug use (IDU)	47	36	76.6		1,888	954	50.5	1,122	843	44.7	75.1	
MSM and IDU	60	39	65.0		2,832	1,658	58.6	1,953	1,407	49.7	72.0	
Heterosexual contact <sup>6</sup>	75	59	78.7		2,864	1,666	58.2	1,920	1,499	52.3	78.1	
Other/unknown	600	443	73.8		6,603	3,345	50.7	3,850	3,040	46.0	79.0	
<b>Country of Birth</b>												
US born	1,069	840	78.6		22,319	12,722	57.00	15,202	11,650	52.2	76.6	
Foreign born	537	444	82.7		12,002	7,103	59.18	7,888	6,516	54.3	82.6	
Unknown	586	456	77.8		7,916	4,006	50.61	4,892	3,969	50.1	81.1	
<b>Total</b>	<b>2,192</b>	<b>1,740</b>	<b>79.4</b>		<b>42,237</b>	<b>23,838</b>	<b>56.38</b>	<b>27,982</b>	<b>22,135</b>	<b>52.4</b>	<b>79.1</b>	

Abbreviations: VL, Viral Load (copies/mL)

1. May include adults and adolescents diagnosed with an HIV infection outside of Los Angeles County (LAC) and have a most recently reported address in LAC.
2. Persons who have at least one viral load or CD4+ T-cell test within 3 months after an HIV diagnosis.
3. Includes total persons diagnosed with HIV infection through 12/31/2009 and living with HIV as of 12/31/2010 (overall population).
4. Persons who have ≥ 2 viral load or CD4+ T-cell tests between 01/01/2010 through 12/31/2010, at least 3 months apart.
5. Multiple race, American Indian/Alaska Native, and unknown race.
6. Heterosexual contact with a person known to have, or to be at high risk for, HIV infection.

TABLE 11. HIV/AIDS DIAGNOSES IN 2011, PERSONS LIVING WITH HIV/AIDS, AND CUMULATIVE CASES BY GENDER, AGE, RACE/ETHNICITY AND TRANSMISSION CATEGORY REPORTED BY DECEMBER 31, 2012, LOS ANGELES COUNTY

	Male			Female			Total								
	Year 2011(1)		Living(1)	Year 2011(1)		Living(1)	Year 2011(1)		Living(1)	Cumulative(1)					
	No. (%)	Rate	No. (%)	Rate	No. (%)	Rate	No. (%)	Rate	No. (%)	Rate					
<b>AGE GROUP (2)</b>															
<13	<5 ( -)	-	21 (<1)	2	283 (<1)	<5 ( -)	-	17 (<1)	2	243 ( 3)	<5 ( -)	-	38 (<1)	2	526 ( 1)
13-19	42 ( 2)	7	113 (<1)	20	1195 ( 2)	7 ( 4)	1	60 ( 1)	11	314 ( 4)	49 ( 3)	4	173 (<1)	16	1509 ( 2)
20-29	596 ( 35)	78	3203 ( 8)	422	18053 ( 25)	42 ( 23)	6	429 ( 8)	60	2037 ( 26)	638 ( 34)	43	3632 ( 8)	247	20090 ( 25)
30-39	512 ( 30)	66	7057 ( 18)	909	29099 ( 40)	55 ( 30)	7	1056 ( 20)	140	2512 ( 32)	567 ( 30)	37	8113 ( 18)	531	31611 ( 39)
40-49	359 ( 21)	46	13818 ( 34)	1757	16397 ( 23)	34 ( 19)	4	1659 ( 32)	214	1589 ( 20)	393 ( 21)	25	15477 ( 34)	991	17986 ( 22)
50-59	151 ( 9)	25	11517 ( 29)	1887	5603 ( 8)	35 ( 19)	5	1315 ( 25)	203	778 ( 10)	186 ( 10)	15	12832 ( 28)	1021	6381 ( 8)
60+	36 ( 2)	5	4586 ( 11)	669	1718 ( 2)	9 ( 5)	1	623 ( 12)	70	294 ( 4)	45 ( 2)	3	5209 ( 11)	331	2012 ( 3)
<b>RACE/ETHNICITY</b>															
White	423 ( 25)	27	14469 ( 36)	926	30890 ( 43)	20 ( 11)	1	768 ( 15)	49	1411 ( 18)	443 ( 24)	14	15237 ( 34)	486	32301 ( 40)
Black	376 ( 22)	85	7476 ( 19)	1698	13581 ( 19)	68 ( 37)	13	1852 ( 36)	368	2888 ( 37)	444 ( 24)	47	9328 ( 21)	988	16469 ( 21)
Hispanic/Latino	778 ( 46)	31	16309 ( 40)	656	24774 ( 34)	88 ( 48)	4	2313 ( 45)	95	3147 ( 41)	866 ( 46)	18	18622 ( 41)	379	27921 ( 35)
Asian/PI	84 ( 5)	13	1369 ( 3)	207	1882 ( 3)	<5 ( -)	-	143 ( 3)	20	195 ( 3)	88 ( 5)	6	1512 ( 3)	109	2077 ( 3)
AI/AN	12 ( 1)	90	184 (<1)	1382	316 (<1)	<5 ( -)	-	28 ( 1)	196	46 ( 1)	13 ( 1)	47	212 (<1)	768	362 (<1)
<b>TRANSMISSION CATEGORY (3)</b>															
MSM	1595 ( 94)		34917 ( 87)		61062 ( 84)	- ( -)		- ( -)		- ( -)	1595 ( 85)		34917 ( 77)		61062 ( 76)
IDU	32 ( 2)		1360 ( 3)		3528 ( 5)	29 ( 16)		1083 ( 21)		2040 ( 26)	61 ( 3)		2443 ( 5)		5568 ( 7)
MSM/IDU	57 ( 3)		2904 ( 7)		5586 ( 8)	- ( -)		- ( -)		- ( -)	57 ( 3)		2904 ( 6)		5586 ( 7)
Hemophi/Transfusion	<5 ( -)		87 (<1)		488 ( 1)	<5 ( -)		55 ( 1)		252 ( 3)	<5 ( -)		142 (<1)		740 ( 1)
Heterosexual contact	12 ( 1)		906 ( 2)		1481 ( 2)	153 ( 84)		3888 ( 75)		5271 ( 68)	165 ( 9)		4794 ( 11)		6752 ( 8)
Perinatal exposure	<5 ( -)		135 (<1)		190 (<1)	<5 ( -)		126 ( 2)		195 ( 3)	<5 ( -)		261 ( 1)		385 (<1)
Other/Undetermined	<5 ( -)		7 (<1)		13 (<1)	<5 ( -)		7 (<1)		9 (<1)	<5 ( -)		14 (<1)		22 (<1)
<b>Total (4)</b>	<b>1698 [ 90]</b>	<b>33</b>	<b>40315 [ 89]</b>	<b>781</b>	<b>72348 [ 90]</b>	<b>182 [ 10]</b>	<b>3</b>	<b>5159 [ 11]</b>	<b>98</b>	<b>7767 [ 10]</b>	<b>1880 [100]</b>	<b>18</b>	<b>45474 [100]</b>	<b>437</b>	<b>80115 [100]</b>

1. Data are provisional due to reporting delay. Rates based on observations fewer than 12 may not be reliable (see technical notes).
2. Age distributions for year 2011 and cumulative cases are based on age at the time of HIV diagnosis while the age distribution for persons living with HIV/AIDS is based on age as of December 31, 2012.
3. Persons without an identified risk factor are assigned a risk factor using multiple imputation (MI) methods (see technical notes). Rate for transmission category is not calculated, because of the lack of denominator data.
4. Percent of total cases that are male and female is shown in this row. Total includes persons who have multiple races/ethnicities or have missing information on race/ethnicity.

TABLE 12. NEW HIV/AIDS DIAGNOSES IN 2009(1) AND RATES PER 100,000 (1,2) BY GENDER, AGE, RACE/ETHNICITY, TRANSMISSION CATEGORY, AND SERVICE PLANNING AREA (SPA) REPORTED BY DECEMBER 31, 2012, LOS ANGELES COUNTY

Service Planning Area	Antelope Valley No. (%) Rate	San Fernando No. (%) Rate	San Gabriel No. (%) Rate	Metro No. (%) Rate	West No. (%) Rate	South No. (%) Rate	East No. (%) Rate	South Bay/LB No. (%) Rate	Total (3) No. (%) Rate
<b>GENDER (4)</b>									
Male	44 ( 77) 24	255 ( 87) 23	156 ( 92) 17	733 ( 94) 115	82 ( 92) 26	206 ( 74) 40	132 ( 85) 19	293 ( 86) 37	1904 ( 88) 37
Female	13 ( 23) 7	38 ( 13) 3	13 ( 8) 1	46 ( 6) 8	7 ( 8) 2	73 ( 26) 14	24 ( 15) 3	47 ( 14) 6	261 ( 12) 5
<b>AGE GROUP</b>									
<30	14 ( 25) 8	95 ( 32) 10	58 ( 34) 7	253 ( 32) 53	20 ( 22) 10	125 ( 45) 22	60 ( 38) 9	109 ( 32) 16	735 ( 34) 16
30-39	15 ( 26) 38	81 ( 28) 26	45 ( 27) 18	249 ( 32) 109	28 ( 31) 24	69 ( 25) 45	47 ( 30) 24	107 ( 31) 47	642 ( 30) 42
40-49	19 ( 33) 37	75 ( 26) 22	36 ( 21) 13	191 ( 25) 91	21 ( 24) 18	50 ( 18) 38	34 ( 22) 18	75 ( 22) 30	501 ( 23) 32
50+	9 ( 16) 10	42 ( 14) 7	30 ( 18) 5	86 ( 11) 26	20 ( 22) 9	35 ( 13) 17	15 ( 10) 4	49 ( 14) 11	287 ( 13) 10
<b>RACE/ETHNICITY</b>									
White	19 ( 33) 12	86 ( 29) 8	36 ( 21) 8	222 ( 28) 79	54 ( 61) 13	5 ( 2) 19	19 ( 12) 8	87 ( 26) 17	529 ( 24) 17
Black	14 ( 25) 27	46 ( 16) 59	20 ( 12) 25	150 ( 19) 207	17 ( 19) 39	142 ( 51) 43	14 ( 9) 38	105 ( 31) 42	510 ( 24) 54
Hispanic/Latino	23 ( 40) 16	143 ( 49) 17	92 ( 54) 11	368 ( 47) 54	12 ( 13) 11	123 ( 44) 18	119 ( 76) 12	122 ( 36) 20	1002 ( 46) 20
Other (5)	<5 ( -) -	11 ( 4) 5	21 ( 12) 4	35 ( 4) 17	<5 ( -) -	5 ( 2) 24	<5 ( -) -	21 ( 6) 8	100 ( 5) 7
<b>TRANSMISSION CATEGORY (6)</b>									
MSM	38 ( 66)	235 ( 80)	142 ( 84)	682 ( 87)	80 ( 90)	187 ( 67)	122 ( 78)	271 ( 80)	1759 ( 81)
IDU	6 ( 11)	9 ( 3)	5 ( 3)	18 ( 2)	<5 ( -)	17 ( 6)	5 ( 3)	19 ( 6)	80 ( 4)
MSM/IDU	<5 ( -)	10 ( 3)	9 ( 5)	37 ( 5)	<5 ( -)	8 ( 3)	5 ( 3)	8 ( 2)	80 ( 4)
Heterosexual contact	10 ( 18)	39 ( 13)	14 ( 8)	42 ( 5)	7 ( 8)	67 ( 24)	25 ( 16)	42 ( 12)	245 ( 11)
<b>Total [% of total](7)</b>	<b>57 [ 3] 16</b>	<b>293 [ 14] 13</b>	<b>169 [ 8] 9</b>	<b>779 [ 36] 63</b>	<b>89 [ 4] 14</b>	<b>279 [ 13] 27</b>	<b>156 [ 7] 11</b>	<b>340 [ 16] 21</b>	<b>2165 [100] 21</b>

1. Data are provisional due to reporting delay.

2. Rates based on observations fewer than 12 may not be reliable (see Technical Notes).

3. Total includes persons with no information on SPA.

4. Transgender is not presented here due to small numbers.

5. Other includes Asian, Pacific Islander, American Indian and Alaskan Native.

6. Persons without an identified risk factor are assigned a risk factor using multiple imputation (MI) methods (see Technical Notes). Rate for transmission category is not calculated, because of the lack of denominator data.

7. Total includes persons who have multiple races/ethnicities or have missing information on race/ethnicity.

TABLE 13. NEW HIV/AIDS DIAGNOSES IN 2010(1) AND RATES PER 100,000 (1,2) BY GENDER, AGE, RACE/ETHNICITY, TRANSMISSION CATEGORY, AND SERVICE PLANNING AREA (SPA) REPORTED BY DECEMBER 31, 2012, LOS ANGELES COUNTY

Service Planning Area	Antelope Valley No. (%) Rate	San Fernando No. (%) Rate	San Gabriel No. (%) Rate	Metro No. (%) Rate	West No. (%) Rate	South No. (%) Rate	East No. (%) Rate	South Bay/LB No. (%) Rate	Total (3) No. (%) Rate
<b>GENDER (4)</b>									
Male	37 ( 77) 20	210 ( 88) 19	128 ( 91) 14	715 ( 93) 112	94 ( 90) 30	209 ( 81) 41	136 ( 82) 20	301 ( 89) 38	1833 ( 89) 36
Female	11 ( 23) 6	30 ( 13) 3	13 ( 9) 1	53 ( 7) 9	10 ( 10) 3	49 ( 19) 9	29 ( 18) 4	37 ( 11) 4	232 ( 11) 4
<b>AGE GROUP</b>									
<30	18 ( 38) 10	95 ( 40) 10	52 ( 37) 6	237 ( 31) 49	35 ( 34) 17	112 ( 43) 20	65 ( 39) 10	122 ( 36) 18	737 ( 36) 16
30-39	7 ( 15) 18	64 ( 27) 21	37 ( 26) 14	251 ( 33) 110	30 ( 29) 26	69 ( 27) 45	48 ( 29) 24	83 ( 25) 37	589 ( 29) 39
40-49	13 ( 27) 26	54 ( 23) 16	34 ( 24) 13	195 ( 25) 93	24 ( 23) 21	45 ( 17) 35	34 ( 21) 18	76 ( 22) 30	477 ( 23) 31
50+	10 ( 21) 11	27 ( 11) 4	18 ( 13) 3	85 ( 11) 26	15 ( 14) 7	32 ( 12) 16	18 ( 11) 5	57 ( 17) 13	262 ( 13) 9
<b>RACE/ETHNICITY</b>									
White	8 ( 17) 5	72 ( 30) 7	25 ( 18) 5	258 ( 34) 92	42 ( 40) 10	7 ( 3) 27	16 ( 10) 7	79 ( 23) 16	509 ( 25) 16
Black	21 ( 44) 41	45 ( 19) 58	16 ( 11) 20	127 ( 17) 176	19 ( 18) 44	135 ( 52) 41	15 ( 9) 40	113 ( 33) 45	491 ( 24) 52
Hispanic/Latino	17 ( 35) 12	113 ( 47) 13	85 ( 60) 10	338 ( 44) 49	32 ( 31) 30	108 ( 42) 16	128 ( 78) 13	117 ( 35) 19	939 ( 45) 19
Other (5)	<5 ( -) -	8 ( 3) 3	13 ( 9) 3	34 ( 4) 16	9 ( 9) 11	<5 ( -) -	<5 ( -) -	18 ( 5) 7	90 ( 4) 6
<b>TRANSMISSION CATEGORY (6)</b>									
MSM	31 ( 64)	192 ( 80)	116 ( 82)	670 ( 87)	90 ( 87)	193 ( 75)	120 ( 72)	271 ( 80)	1685 ( 82)
IDU	<5 ( -)	9 ( 4)	9 ( 6)	19 ( 2)	<5 ( -)	17 ( 7)	9 ( 5)	13 ( 4)	82 ( 4)
MSM/IDU	<5 ( -)	9 ( 4)	<5 ( -)	28 ( 4)	<5 ( -)	<5 ( -)	8 ( 5)	15 ( 4)	71 ( 3)
Heterosexual contact	10 ( 20)	30 ( 12)	12 ( 8)	50 ( 7)	8 ( 8)	45 ( 17)	29 ( 18)	38 ( 11)	221 ( 11)
Perinatal exposure	<5 ( -)	<5 ( -)	<5 ( -)	<5 ( -)	<5 ( -)	<5 ( -)	<5 ( -)	<5 ( -)	6 (<1)
<b>Total [% of total] (7)</b>	<b>48 [ 2] 13</b>	<b>240 [ 12] 11</b>	<b>141 [ 7] 7</b>	<b>768 [ 37] 62</b>	<b>104 [ 5] 16</b>	<b>258 [ 12] 25</b>	<b>165 [ 8] 12</b>	<b>338 [ 16] 21</b>	<b>2065 [100] 20</b>

1. Data are provisional due to reporting delay.
2. Rates based on observations fewer than 12 may not be reliable (see technical notes).
3. Total includes persons with no information on SPA.
4. Transgender is not presented here due to small numbers.
5. Other includes Asian, Pacific Islander, American Indian and Alaskan Native.
6. Persons without an identified risk factor are assigned a risk factor using multiple imputation (MI) methods (see technical notes). Rate for transmission category is not calculated, because of the lack of denominator data.
7. Total includes persons who have multiple races/ethnicities or have missing information on race/ethnicity.



TABLE 14. NEW HIV/AIDS DIAGNOSES IN 2011(1) AND RATES PER 100,000 (1,2) BY GENDER, AGE, RACE/ETHNICITY, TRANSMISSION CATEGORY, AND SERVICE PLANNING AREA (SPA) REPORTED BY DECEMBER 31, 2012, LOS ANGELES COUNTY

Service Planning Area	Antelope Valley No. (%) Rate	San Fernando No. (%) Rate	San Gabriel No. (%) Rate	Metro No. (%) Rate	West No. (%) Rate	South No. (%) Rate	East No. (%) Rate	South Bay/LB No. (%) Rate	Total (3) No. (%) Rate
<b>GENDER (4)</b>									
Male	28 ( 78) 15	226 ( 90) 20	131 ( 90) 14	583 ( 95) 91	80 ( 91) 25	230 ( 85) 45	151 ( 89) 22	269 ( 87) 34	1698 ( 90) 33
Female	8 ( 22) 4	24 ( 10) 2	15 ( 10) 2	29 ( 5) 5	8 ( 9) 2	40 ( 15) 7	18 ( 11) 3	39 ( 13) 5	182 ( 10) 3
<b>AGE GROUP</b>									
<30	6 ( 17) 3	86 ( 34) 9	56 ( 38) 7	217 ( 35) 45	28 ( 32) 14	105 ( 39) 19	62 ( 37) 9	129 ( 42) 19	689 ( 37) 15
30-39	11 ( 31) 28	78 ( 31) 25	34 ( 23) 13	209 ( 34) 92	28 ( 32) 24	85 ( 31) 56	46 ( 27) 23	76 ( 25) 33	567 ( 30) 37
40-49	13 ( 36) 26	48 ( 19) 14	32 ( 22) 12	139 ( 23) 66	18 ( 20) 16	38 ( 14) 29	43 ( 25) 23	62 ( 20) 25	393 ( 21) 25
50+	6 ( 17) 7	38 ( 15) 6	24 ( 16) 4	47 ( 8) 14	14 ( 16) 6	42 ( 16) 20	18 ( 11) 5	41 ( 13) 9	231 ( 12) 8
<b>RACE/ETHNICITY</b>									
White	5 ( 14) 3	84 ( 34) 8	25 ( 17) 5	200 ( 33) 72	42 ( 48) 10	<5 ( -) -	16 ( 9) 7	67 ( 22) 13	443 ( 24) 14
Black	15 ( 42) 29	33 ( 13) 43	15 ( 10) 19	104 ( 17) 144	20 ( 23) 46	128 ( 47) 38	10 ( 6) 27	118 ( 38) 47	444 ( 24) 47
Hispanic/Latino	15 ( 42) 11	111 ( 44) 13	83 ( 57) 10	269 ( 44) 39	19 ( 22) 18	128 ( 47) 19	132 ( 78) 13	109 ( 35) 18	866 ( 46) 18
Other (5)	<5 ( -) -	20 ( 8) 8	21 ( 14) 4	26 ( 4) 13	6 ( 7) 7	5 ( 2) 24	10 ( 6) 8	12 ( 4) 5	101 ( 5) 7
<b>TRANSMISSION CATEGORY (6)</b>									
MSM	26 ( 71)	213 ( 85)	122 ( 84)	557 ( 91)	74 ( 84)	215 ( 80)	137 ( 81)	252 ( 82)	1595 ( 85)
IDU	<5 ( -)	9 ( 3)	7 ( 5)	11 ( 2)	<5 ( -)	8 ( 3)	6 ( 4)	15 ( 5)	61 ( 3)
MSM/IDU	<5 ( -)	6 ( 2)	<5 ( -)	17 ( 3)	<5 ( -)	9 ( 3)	9 ( 5)	8 ( 3)	57 ( 3)
Heterosexual contact	7 ( 19)	23 ( 9)	15 ( 10)	27 ( 4)	8 ( 9)	37 ( 14)	16 ( 9)	33 ( 11)	165 ( 9)
Perinatal exposure	<5 ( -)	<5 ( -)	<5 ( -)	<5 ( -)	<5 ( -)	<5 ( -)	<5 ( -)	<5 ( -)	<5 ( -)
<b>Total [% of total] (7)</b>	<b>36 [ 2] 10</b>	<b>250 [ 13] 11</b>	<b>146 [ 8] 8</b>	<b>612 [ 33] 49</b>	<b>88 [ 5] 14</b>	<b>270 [ 14] 26</b>	<b>169 [ 9] 12</b>	<b>308 [ 16] 19</b>	<b>1880 [100] 18</b>

1. Data are provisional due to reporting delay.
2. Rates based on observations fewer than 12 may not be reliable (see technical notes).
3. Total includes persons with no information on SPA.
4. Transgender is not presented here due to small numbers.
5. Other includes Asian, Pacific Islander, American Indian and Alaskan Native.
6. Persons without an identified risk factor are assigned a risk factor using multiple imputation (MI) methods (see technical notes). Rate for transmission category is not calculated, because of the lack of denominator data.
7. Total includes persons who have multiple races/ethnicities or have missing information on race/ethnicity.

TABLE 15. PERSONS LIVING WITH HIV/AIDS (1) AS OF DECEMBER 31, 2012 BY RACE/ETHNICITY, GENDER, AGE, TRANSMISSION CATEGORY, AND SERVICE PLANNING AREA (SPA)  
 REPORTED BY DECEMBER 31, 2012, LOS ANGELES COUNTY

	White			Black			Hispanic/Latino			Other (2)			Total (3)		
	Male	Female	All	Male	Female	All	Male	Female	All	Male	Female	All	Male	Female	All
	No. (%)	No. (%)	No. (%)	No. (%)	No. (%)	No. (%)	No. (%)	No. (%)	No. (%)	No. (%)	No. (%)	No. (%)	No. (%)	No. (%)	No. (%)
<b>AGE GROUP (4)</b>															
<13	<5( -)	<5( -)	<5( -)	9 (<1)	7(<1)	16(<1)	6 (<1)	7(<1)	13(<1)	<5 ( -)	<5( -)	<5( -)	21(<1)	17(<1)	38(<1)
13-19	13(<1)	<5( -)	14(<1)	35 (<1)	23( 1)	58( 1)	62 (<1)	36( 2)	98( 1)	<5 ( -)	<5( -)	<5( -)	113(<1)	60( 1)	173(<1)
20-29	539( 4)	40( 5)	579( 4)	934 (12)	146( 8)	1080(12)	1531 ( 9)	230(10)	1761( 9)	139 ( 9)	10( 6)	149( 9)	3203( 8)	429( 8)	3632( 8)
30-39	1548(11)	101(13)	1649(11)	1192 (16)	352(19)	1544(17)	3867 (24)	548(24)	4415(24)	359 (23)	42(25)	401(23)	7057(18)	1056(20)	8113(18)
40-49	4786(33)	270(35)	5056(33)	2283 (31)	589(32)	2872(31)	6038 (37)	730(32)	6768(36)	544 (35)	51(30)	595(35)	13818(34)	1659(32)	15477(34)
50-59	5238(36)	222(29)	5460(36)	2195 (29)	539(29)	2734(29)	3587 (22)	500(22)	4087(22)	355 (23)	42(25)	397(23)	11517(29)	1315(25)	12832(28)
60+	2343(16)	132(17)	2475(16)	828 (11)	196(11)	1024(11)	1218 ( 7)	262(11)	1480( 8)	149 (10)	26(15)	175(10)	4586(11)	623(12)	5209(11)
<b>TRANSMISSION CATEGORY (5)</b>															
MSM	12824(89)	- ( -)	12824(84)	6049(81)	- ( -)	6049(65)	14229(87)	- ( -)	14229(76)	1401(90)	- ( -)	1401(81)	34917(87)	- ( -)	34917(77)
IDU	348( 2)	289(38)	638( 4)	439( 6)	435(23)	873( 9)	526( 3)	318(14)	844( 5)	24( 2)	24(14)	48( 3)	1360( 3)	1083(21)	2443( 5)
MSM/IDU	1155( 8)	- ( -)	1155( 8)	665( 9)	- ( -)	665( 7)	939( 6)	- ( -)	939( 5)	83( 5)	- ( -)	83( 5)	2904( 7)	- ( -)	2904( 6)
Hemophi/Transfusion	28(<1)	10( 1)	38(<1)	14(<1)	18( 1)	32(<1)	36(<1)	23( 1)	59(<1)	8( 1)	<5( -)	10( 1)	87(<1)	55( 1)	142(<1)
Heterosexual contact	94( 1)	460(60)	554( 4)	262( 4)	1356(73)	1617(17)	513( 3)	1894(82)	2406(13)	29( 2)	144(84)	173(10)	906( 2)	3888(75)	4794(11)
Perinatal exposure	18(<1)	7( 1)	25(<1)	46( 1)	43( 2)	89( 1)	63(<1)	74( 3)	137( 1)	7(<1)	<5( -)	8(<1)	135(<1)	126( 2)	261( 1)
Other/Undetermined	<5( -)	<5( -)	<5( -)	<5( -)	<5( -)	<5( -)	<5( -)	<5( -)	8(<1)	<5( -)	<5( -)	<5( -)	7(<1)	7(<1)	14(<1)
<b>SERVICE PLANNING AREA</b>															
Antelope Valley[1]	160( 1)	33( 4)	193( 1)	145( 2)	64( 3)	209( 2)	167( 1)	41( 2)	208( 1)	7 (<1)	<5( -)	10( 1)	486( 1)	145( 3)	631( 1)
San Fernando[2]	2482(17)	193(25)	2675(18)	636( 9)	158( 9)	794( 9)	2240(14)	310(13)	2550(14)	238 (15)	22(13)	260(15)	5678(14)	688(13)	6366(14)
San Gabriel[3]	638( 4)	76(10)	714( 5)	297( 4)	107( 6)	404( 4)	1465( 9)	232(10)	1697( 9)	237 (15)	34(20)	271(16)	2668( 7)	451( 9)	3119( 7)
Metro[4]	6802(47)	168(22)	6970(46)	2499(33)	332(18)	2831(30)	6155(38)	576(25)	6731(36)	573 (37)	41(24)	614(36)	16239(40)	1129(22)	17368(38)
West[5]	1330( 9)	83(11)	1413( 9)	314( 4)	70( 4)	384( 4)	510( 3)	46( 2)	556( 3)	99 ( 6)	13( 8)	112( 6)	2285( 6)	215( 4)	2500( 5)
South[6]	138( 1)	23( 3)	161( 1)	1848(25)	580(31)	2428(26)	1645(10)	447(19)	2092(11)	28 ( 2)	11( 6)	39( 2)	3697( 9)	1075(21)	4772(10)
East[7]	327( 2)	38( 5)	365( 2)	137( 2)	57( 3)	194( 2)	1934(12)	346(15)	2280(12)	81 ( 5)	13( 8)	94( 5)	2495( 6)	457( 9)	2952( 6)
South Bay/LB[8]	2546(18)	152(20)	2698(18)	1583(21)	479(26)	2062(22)	2160(13)	314(14)	2474(13)	283 (18)	34(20)	317(18)	6664(17)	991(19)	7655(17)
<b>Total (6)</b>	<b>14469[95]</b>	<b>768[ 5]</b>	<b>15237[100]</b>	<b>7476[80]</b>	<b>1852[20]</b>	<b>9328[100]</b>	<b>16309[88]</b>	<b>2313[12]</b>	<b>18622[100]</b>	<b>1553 [90]</b>	<b>171[10]</b>	<b>1724[100]</b>	<b>40315[89]</b>	<b>5159[11]</b>	<b>45474[100]</b>

1. Data are provisional due to reporting delay.
2. Other includes Asian, Pacific Islander, American Indian and Alaskan Native.
3. Total includes persons who have multiple races/ethnicities or have missing information on race/ethnicity.
4. Age as of December 31, 2012.
5. Persons without an identified risk factor are assigned a risk factor using multiple imputation (MI) methods (see technical notes).
6. Total includes persons who have missing information on SPA. Percent of total cases that are male and female is shown in this row.

TABLE 16. PERSONS LIVING WITH HIV/AIDS (1) AND RATES PER 100,000 (1,2) AS OF DECEMBER 31, 2012  
 BY SERVICE PLANNING AREA (SPA), GENDER, AGE, RACE/ETHNICITY AND TRANSMISSION CATEGORY  
 REPORTED BY DECEMBER 31, 2012, LOS ANGELES COUNTY

Service Planning Area	Antelope Valley No. (%) Rate	San Fernando No. (%) Rate	San Gabriel No. (%) Rate	Metro No. (%) Rate	West No. (%) Rate	South No. (%) Rate	East No. (%) Rate	South Bay/LB No. (%) Rate	Total (3) No. (%) Rate
<b>GENDER</b>									
Male	484 (77) 264	5609 (88) 508	2640 (85) 286	16007 (92) 2501	2274 (91) 718	3643 (76) 708	2473 (84) 361	6598 (86) 830	39828 (88) 772
Female	144 (23) 79	683 (11) 61	450 (14) 47	1123 ( 6) 186	215 ( 9) 64	1073 (22) 200	455 (15) 65	989 (13) 120	5140 (11) 98
Transgender(4)	<5 ( -) -	74 ( 1) -	29 ( 1) -	238 ( 1) -	11 (<1) -	56 ( 1) -	24 ( 1) -	68 ( 1) -	506 ( 1) -
<b>AGE GROUP (5)</b>									
<13	<5 ( -) -	<5 ( -) -	5 (<1) 2	9 (<1) 4	<5 ( -) -	10 (<1) 4	<5 ( -) -	6 (<1) 2	38 (<1) 2
13-19	<5 ( -) -	16 (<1) 7	14 (<1) 7	42 (<1) 36	5 (<1) 10	44 ( 1) 32	18 ( 1) 11	30 (<1) 17	173 (<1) 16
20-29	61 (10) 93	456 ( 7) 149	281 ( 9) 100	1110 ( 6) 738	133 ( 5) 200	627 (13) 365	317 (11) 148	641 ( 8) 295	3632 ( 8) 247
30-39	118 (19) 303	1095 (17) 353	599 (19) 233	2927 (17) 1284	370 (15) 321	1017 (21) 667	613 (21) 307	1359 (18) 599	8113 (18) 531
40-49	193 (31) 381	2092 (33) 603	1030 (33) 379	6247 (36) 2981	814 (33) 707	1433 (30) 1100	1011 (34) 538	2621 (34) 1050	15477 (34) 991
50-59	184 (29) 408	1880 (30) 643	822 (26) 342	5089 (29) 3524	812 (32) 893	1152 (24) 1215	686 (23) 459	2170 (28) 1087	12832 (28) 1021
60+	70 (11) 158	824 (13) 234	368 (12) 119	1944 (11) 1062	364 (15) 283	489 (10) 439	305 (10) 160	828 (11) 328	5209 (11) 331
<b>RACE/ETHNICITY</b>									
White	193 (31) 123	2675 (42) 256	714 (23) 153	6970 (40) 2494	1413 (57) 336	161 ( 3) 617	365 (12) 155	2698 (35) 531	15237 (34) 486
Black	209 (33) 404	794 (12) 1026	404 (13) 504	2831 (16) 3913	384 (15) 888	2428 (51) 729	194 ( 7) 521	2062 (27) 827	9328 (21) 988
Hispanic/Latino	208 (33) 148	2550 (40) 298	1697 (54) 198	6731 (39) 982	556 (22) 515	2092 (44) 311	2280 (77) 232	2474 (32) 404	18622 (41) 379
Asian/PI	8 ( 1) 56	232 ( 4) 100	260 ( 8) 55	518 ( 3) 253	96 ( 4) 122	18 (<1) 96	82 ( 3) 67	293 ( 4) 120	1512 ( 3) 109
AI/AN	<5 ( -) -	28 (<1) 471	11 (<1) 241	96 ( 1) 2833	16 ( 1) 1167	21 (<1) 1215	12 (<1) 285	24 (<1) 549	212 (<1) 768
<b>TRANSMISSION CATEGORY (4,6)</b>									
MSM	366 (58)	4924 (77)	2270 (73)	14363 (83)	2042 (82)	3062 (64)	2147 (73)	5663 (74)	34917 (77)
IDU	77 (12)	311 ( 5)	222 ( 7)	666 ( 4)	102 ( 4)	388 ( 8)	187 ( 6)	479 ( 6)	2443 ( 5)
MSM/IDU	53 ( 8)	396 ( 6)	165 ( 5)	1234 ( 7)	139 ( 6)	233 ( 5)	152 ( 5)	519 ( 7)	2904 ( 6)
Hemophi/Transfusion	<5 ( -) -	28 (<1)	18 ( 1)	28 (<1)	10 (<1)	17 (<1)	17 ( 1)	23 (<1)	142 (<1)
Heterosexual contact	126 (20)	681 (11)	418 (13)	1009 ( 6)	193 ( 8)	1008 (21)	428 (14)	924 (12)	4794 (11)
Perinatal exposure	7 ( 1)	24 (<1)	23 ( 1)	65 (<1)	13 ( 1)	62 ( 1)	20 ( 1)	47 ( 1)	261 ( 1)
Other/Undetermined	<5 ( -) -	<5 ( -) -	<5 ( -) -	<5 ( -) -	<5 ( -) -	<5 ( -) -	<5 ( -) -	<5 ( -) -	14 (<1)

Total [% of total] (7) 631 [ 1]173 6366 [ 14]287 3119 [ 7]166 17368 [ 38]1395 2500 [ 5]384 4772 [ 10]454 2952 [ 6]214 7655 [ 17]473 45474 [100]437

1. Data are provisional due to reporting delay
2. Rates are based on year 2009 population estimates. Rates that are based on observations few than 12 may not be reliable (see Technical Notes).
3. Total includes persons with no information on SPA.
4. Rates for transgender and transmission category are not calculated, because of the lack of denominator data.
5. Age as of December 31, 2012.
6. Persons without an identified risk factor are assigned a risk factor using multiple imputation (MI) methods (see technical notes).
7. Total includes persons who have multiple races/ethnicities or have missing information on race/ethnicity.

TABLE 17. CUMULATIVE HIV/AIDS DIAGNOSES (1) BY GENDER, AGE, RACE/ETHNICITY, TRANSMISSION CATEGORY, AND SERVICE PLANNING AREA (SPA)  
 REPORTED BY DECEMBER 31, 2012, LOS ANGELES COUNTY

Service Planning Area	Antelope Valley No. (%)	San Fernando No. (%)	San Gabriel No. (%)	Metro No. (%)	West No. (%)	South No. (%)	East No. (%)	South Bay/LB No. (%)	Total (2) No. (%)
<b>GENDER</b>									
Male	748 ( 80)	10372 ( 90)	4999 ( 87)	29179 ( 94)	4280 ( 93)	6561 ( 79)	4151 ( 86)	11238 ( 88)	71756 ( 90)
Female	189 ( 20)	1009 ( 9)	734 ( 13)	1669 ( 5)	333 ( 7)	1672 ( 20)	664 ( 14)	1455 ( 11)	7737 ( 10)
Transgender	<5 ( -)	101 ( 1)	31 ( 1)	300 ( 1)	12 (<1)	69 ( 1)	26 ( 1)	76 ( 1)	622 ( 1)
<b>AGE AT DIAGNOSIS</b>									
<13	14 ( 1)	65 ( 1)	61 ( 1)	120 (<1)	23 (<1)	104 ( 1)	47 ( 1)	92 ( 1)	526 ( 1)
13-19	23 ( 2)	194 ( 2)	94 ( 2)	470 ( 2)	46 ( 1)	281 ( 3)	120 ( 2)	273 ( 2)	1509 ( 2)
20-29	212 ( 23)	2678 ( 23)	1467 ( 25)	7594 ( 24)	997 ( 22)	2321 ( 28)	1395 ( 29)	3358 ( 26)	20090 ( 25)
30-39	351 ( 37)	4442 ( 39)	2167 ( 38)	12888 ( 41)	1942 ( 42)	2866 ( 35)	1810 ( 37)	5043 ( 39)	31611 ( 39)
40-49	220 ( 23)	2755 ( 24)	1293 ( 22)	7148 ( 23)	1080 ( 23)	1779 ( 21)	947 ( 20)	2716 ( 21)	17986 ( 22)
50-59	87 ( 9)	1028 ( 9)	482 ( 8)	2303 ( 7)	380 ( 8)	714 ( 9)	375 ( 8)	1001 ( 8)	6381 ( 8)
60+	33 ( 4)	320 ( 3)	200 ( 3)	625 ( 2)	157 ( 3)	237 ( 3)	147 ( 3)	286 ( 2)	2012 ( 3)
<b>RACE/ETHNICITY</b>									
White	361 ( 38)	6090 ( 53)	1764 ( 31)	14535 ( 47)	2858 ( 62)	339 ( 4)	813 ( 17)	5413 ( 42)	32301 ( 40)
Black	283 ( 30)	1208 ( 11)	849 ( 15)	4912 ( 16)	671 ( 15)	4901 ( 59)	313 ( 6)	3285 ( 26)	16469 ( 21)
Hispanic/Latino	270 ( 29)	3711 ( 32)	2729 ( 47)	10357 ( 33)	884 ( 19)	2893 ( 35)	3554 ( 73)	3462 ( 27)	27921 ( 35)
Asian/PI	11 ( 1)	303 ( 3)	342 ( 6)	750 ( 2)	124 ( 3)	31 (<1)	113 ( 2)	397 ( 3)	2077 ( 3)
AI/AN	<5 ( -)	44 (<1)	22 (<1)	158 ( 1)	25 ( 1)	32 (<1)	24 (<1)	51 (<1)	362 (<1)
<b>TRANSMISSION CATEGORY (3)</b>									
MSM	530 ( 56)	8921 ( 78)	4121 ( 72)	25620 ( 82)	3758 ( 81)	5185 ( 62)	3452 ( 71)	9301 ( 73)	61062 ( 76)
IDU	146 ( 16)	719 ( 6)	530 ( 9)	1473 ( 5)	238 ( 5)	980 ( 12)	404 ( 8)	1055 ( 8)	5569 ( 7)
MSM/IDU	81 ( 9)	713 ( 6)	344 ( 6)	2418 ( 8)	273 ( 6)	504 ( 6)	274 ( 6)	947 ( 7)	5586 ( 7)
Hemophi/Transfusion	15 ( 2)	141 ( 1)	93 ( 2)	124 (<1)	60 ( 1)	85 ( 1)	86 ( 2)	132 ( 1)	740 ( 1)
Heterosexual contact	160 ( 17)	943 ( 8)	627 ( 11)	1414 ( 5)	277 ( 6)	1461 ( 18)	593 ( 12)	1266 ( 10)	6752 ( 8)
Perinatal exposure	7 ( 1)	39 (<1)	42 ( 1)	95 (<1)	18 (<1)	86 ( 1)	32 ( 1)	66 ( 1)	385 (<1)
Other/Undetermined	<5 ( -)	5 (<1)	7 (<1)	<5 ( -)	<5 ( -)	<5 ( -)	<5 ( -)	<5 ( -)	22 (<1)
<b>Total [% of total] (4)</b>	<b>940 [ 1]</b>	<b>11482 [ 14]</b>	<b>5764 [ 7]</b>	<b>31148 [ 39]</b>	<b>4625 [ 6]</b>	<b>8302 [ 10]</b>	<b>4841 [ 6]</b>	<b>12769 [ 16]</b>	<b>80115 [100]</b>

1. Data are provisional due to reporting delay.
2. Total includes persons with no information on SPA.
3. Persons without an identified risk factor are assigned a risk factor using multiple imputation (MI) methods (See technical notes).
4. Total includes persons who have multiple races/ethnicities or have missing information on race/ethnicity.

TABLE 18. PERSONS LIVING WITH NON-AIDS HIV (1) AND RATE PER 100,000 (2) AS OF DECEMBER 31, 2012  
 BY SERVICE PLANNING AREA (SPA), GENDER, AGE, RACE/ETHNICITY AND TRANSMISSION CATEGORY, LOS ANGELES COUNTY

Service Planning Area	Antelope Valley No. (%) Rate	San Fernando No. (%) Rate	San Gabriel No. (%) Rate	Metro No. (%) Rate	West No. (%) Rate	South No. (%) Rate	East No. (%) Rate	South Bay/LB No. (%) Rate	Total (3) No. (%) Rate
<b>GENDER</b>									
Male	201 (73) 110	2251 (87) 204	1009 (84) 109	6609 (92) 1033	950 (91) 300	1374 (73) 267	895 (81) 131	2185 (84) 275	15504 (87) 300
Female	75 (27) 41	312 (12) 28	178 (15) 19	460 (6) 76	91 (9) 27	495 (26) 92	200 (18) 29	380 (15) 46	2193 (12) 42
Transgender(4)	<5 ( - ) -	29 ( 1 ) -	8 ( 1 ) -	118 ( 2 ) -	<5 ( - ) -	15 ( 1 ) -	11 ( 1 ) -	28 ( 1 ) -	213 ( 1 ) -
<b>AGE GROUP (5)</b>									
<13	<5 ( - ) -	<5 ( - ) -	<5 ( - ) -	6 (<1) 3	<5 ( - ) -	9 (<1) 4	<5 ( - ) -	<5 ( - ) -	29 (<1) 2
13-19	<5 ( - ) -	10 (<1) 4	10 ( 1 ) 5	27 (<1) 23	<5 ( - ) -	28 ( 1 ) 20	10 ( 1 ) 6	20 ( 1 ) 11	111 ( 1 ) 10
20-29	50 (18) 77	336 (13) 110	195 (16) 69	846 (12) 562	100 (10) 150	451 (24) 263	237 (21) 111	446 (17) 205	2666 (15) 181
30-39	64 (23) 164	632 (24) 204	320 (27) 124	1798 (25) 789	228 (22) 198	500 (27) 328	298 (27) 149	627 (24) 276	4474 (25) 293
40-49	83 (30) 164	803 (31) 231	351 (29) 129	2455 (34) 1172	334 (32) 290	474 (25) 364	324 (29) 172	789 (30) 316	5623 (31) 360
50-59	59 (21) 131	577 (22) 197	227 (19) 94	1563 (22) 1082	262 (25) 288	300 (16) 317	167 (15) 112	498 (19) 250	3660 (20) 291
60+	18 ( 6 ) 41	232 ( 9 ) 66	88 ( 7 ) 28	492 ( 7 ) 269	114 (11) 89	122 ( 6 ) 110	68 ( 6 ) 36	210 ( 8 ) 83	1347 ( 8 ) 86
<b>RACE/ETHNICITY</b>									
White	73 (26) 47	1110 (43) 106	303 (25) 65	3022 (42) 1081	606 (58) 144	65 ( 3 ) 249	149 (13) 63	839 (32) 165	6180 (35) 197
Black	107 (39) 207	368 (14) 476	132 (11) 165	1227 (17) 1696	162 (16) 375	997 (53) 300	87 ( 8 ) 233	783 (30) 314	3868 (22) 410
Hispanic/Latino	88 (32) 62	966 (37) 113	631 (53) 74	2568 (36) 375	204 (20) 189	782 (42) 116	826 (75) 84	817 (32) 133	6893 (38) 140
Asian/PI	<5 ( - ) -	104 ( 4 ) 45	109 ( 9 ) 23	236 ( 3 ) 115	50 ( 5 ) 63	11 ( 1 ) 59	32 ( 3 ) 26	106 ( 4 ) 43	652 ( 4 ) 47
AI/AN	<5 ( - ) -	9 (<1) 151	<5 ( - ) -	38 ( 1 ) 1121	7 ( 1 ) 511	13 ( 1 ) 752	5 (<1) 119	8 (<1) 183	85 (<1) 308
<b>TRANSMISSION CATEGORY (4,6)</b>									
MSM	168 (60)	2077 (80)	913 (76)	6217 (87)	889 (85)	1229 (65)	826 (75)	1981 (76)	14325 (80)
IDU	26 ( 9 )	75 ( 3 )	54 ( 5 )	192 ( 3 )	24 ( 2 )	121 ( 6 )	52 ( 5 )	129 ( 5 )	675 ( 4 )
MSM/IDU	20 ( 7 )	133 ( 5 )	52 ( 4 )	370 ( 5 )	48 ( 5 )	65 ( 3 )	41 ( 4 )	109 ( 4 )	838 ( 5 )
Hemophi/Transfusion	<5 ( - )	6 (<1)	5 (<1)	5 (<1)	<5 ( - )	<5 ( - )	<5 ( - )	6 (<1)	26 (<1)
Heterosexual contact	60 (22)	289 (11)	155 (13)	374 ( 5 )	76 ( 7 )	436 (23)	176 (16)	344 (13)	1911 (11)
Perinatal exposure	<5 ( - )	9 (<1)	15 ( 1 )	28 (<1)	8 ( 1 )	32 ( 2 )	7 ( 1 )	24 ( 1 )	127 ( 1 )
Other/Undetermined	<5 ( - )	<5 ( - )	<5 ( - )	<5 ( - )	<5 ( - )	<5 ( - )	<5 ( - )	<5 ( - )	7 (<1)
<b>Total [% of total] (7)</b>	<b>277 [ 2 ] 76</b>	<b>2592 [ 14 ] 117</b>	<b>1195 [ 7 ] 63</b>	<b>7187 [ 40 ] 577</b>	<b>1044 [ 6 ] 160</b>	<b>1884 [ 11 ] 179</b>	<b>1106 [ 6 ] 80</b>	<b>2593 [ 14 ] 160</b>	<b>17910 [ 100 ] 172</b>

1. Based on preliminary number of persons reported with HIV by name from April 17, 2006 to December 31, 2012. Coded HIV cases not yet re-ascertained with name are not included. Data are provisional due to reporting delay.  
 2. Rates are based on year 2009 population estimates. Rates that are based on observations fewer than 12 may not be reliable (see Technical Notes).  
 3. Total includes persons with no information on SPA.  
 4. Rates for transgender and transmission category are not calculated, because of the lack of denominator data.  
 5. Age as of December 31, 2012.  
 6. Persons without an identified risk factor are assigned a risk factor using multiple imputation (MI) methods (see Technical Notes).  
 7. Total includes persons who have multiple races/ethnicities or have missing information on race/ethnicity.

TABLE 19. AIDS DIAGNOSES AND RATES PER 100,000 (1) BY GENDER, YEAR OF DIAGNOSIS, AND RACE/ETHNICITY  
 REPORTED BY DECEMBER 31, 2012  
 LOS ANGELES COUNTY

Year of Diagnosis	Race/Ethnicity					
	White No. (Rate)	Black No. (Rate)	Hispanic/Latino No. (Rate)	Asian/PI No. (Rate)	AI/AN No. (Rate)	Total (2) No. (Rate)
<b>MALE</b>						
2003	564 ( 36)	268 ( 61)	658 ( 28)	51 ( 8)	7 ( 48)	1561 ( 31)
2004	411 ( 26)	241 ( 55)	625 ( 26)	48 ( 8)	6 ( 41)	1351 ( 27)
2005	390 ( 25)	256 ( 59)	557 ( 23)	44 ( 7)	5 ( 34)	1265 ( 25)
2006	390 ( 25)	217 ( 50)	530 ( 22)	42 ( 6)	<5 ( -)	1201 ( 24)
2007	296 ( 19)	199 ( 45)	508 ( 21)	44 ( 7)	9 ( 60)	1067 ( 21)
2008	365 ( 23)	226 ( 51)	530 ( 21)	54 ( 8)	7 ( 50)	1215 ( 24)
2009	347 ( 22)	239 ( 54)	587 ( 24)	45 ( 7)	5 ( 38)	1241 ( 24)
2010 (3)	237 ( 15)	227 ( 52)	504 ( 20)	43 ( 6)	9 ( 68)	1028 ( 20)
2011 (3)	222 ( 14)	178 ( 40)	386 ( 16)	40 ( 6)	<5 ( -)	845 ( 16)
2012 (3)	157 ( 10)	126 ( 29)	337 ( 14)	31 ( 5)	6 ( 45)	673 ( 13)
<b>Cumulative</b>						
Male subtotal	24295	10086	18426	1272	225	54949
<b>FEMALE</b>						
2003	26 ( 2)	75 ( 15)	106 ( 5)	5 ( 1)	<5 ( -)	215 ( 4)
2004	35 ( 2)	74 ( 15)	69 ( 3)	6 ( 1)	<5 ( -)	187 ( 4)
2005	26 ( 2)	76 ( 15)	70 ( 3)	6 ( 1)	<5 ( -)	183 ( 4)
2006	17 ( 1)	65 ( 13)	87 ( 4)	5 ( 1)	<5 ( -)	179 ( 3)
2007	21 ( 1)	61 ( 12)	65 ( 3)	<5 ( -)	<5 ( -)	155 ( 3)
2008	23 ( 1)	73 ( 14)	69 ( 3)	7 ( 1)	<5 ( -)	174 ( 3)
2009	22 ( 1)	60 ( 12)	73 ( 3)	5 ( 1)	<5 ( -)	164 ( 3)
2010 (3)	16 ( 1)	59 ( 12)	59 ( 2)	<5 ( -)	<5 ( -)	137 ( 3)
2011 (3)	14 ( 1)	55 ( 11)	42 ( 2)	<5 ( -)	<5 ( -)	116 ( 2)
2012 (3)	8 ( 1)	33 ( 7)	29 ( 1)	<5 ( -)	<5 ( -)	74 ( 1)
<b>Cumulative</b>						
Female subtotal	1018	1990	2104	119	32	5314
<b>BOTH</b>						
2003	590 ( 19)	343 ( 36)	764 ( 17)	56 ( 4)	8 ( 27)	1776 ( 18)
2004	446 ( 14)	315 ( 33)	694 ( 15)	54 ( 4)	7 ( 23)	1538 ( 15)
2005	416 ( 13)	332 ( 35)	627 ( 13)	50 ( 4)	6 ( 20)	1448 ( 14)
2006	407 ( 13)	282 ( 30)	617 ( 13)	47 ( 3)	6 ( 19)	1380 ( 13)
2007	317 ( 10)	260 ( 28)	573 ( 12)	48 ( 3)	10 ( 33)	1222 ( 12)
2008	388 ( 12)	299 ( 32)	599 ( 12)	61 ( 4)	7 ( 24)	1389 ( 13)
2009	369 ( 12)	299 ( 32)	660 ( 13)	50 ( 4)	6 ( 22)	1405 ( 13)
2010 (3)	253 ( 8)	286 ( 30)	563 ( 11)	43 ( 3)	9 ( 33)	1165 ( 11)
2011 (3)	236 ( 8)	233 ( 25)	428 ( 9)	43 ( 3)	5 ( 18)	961 ( 9)
2012 (3)	165 ( 5)	159 ( 17)	366 ( 7)	32 ( 2)	7 ( 25)	747 ( 7)
<b>Cumulative Total</b>						
1982-2012	25313	12076	20530	1391	257	60263

1. Rates are based on population estimates for 2003-2009. Rates for 2010-2012 are calculated using population Estimates for 2009. Rates based on observations fewer than 12 may not be reliable (see Technical Notes).
2. Total includes persons who have multiple races/ethnicities or have missing information on race/ethnicity.
3. Data are provisional due to reporting delay.

TABLE 20. AIDS DIAGNOSES AMONG ADULTS/ADOLESCENTS AND RATES PER 100,000 (1)  
 BY GENDER, YEAR OF DIAGNOSIS, AND RACE/ETHNICITY  
 REPORTED BY DECEMBER 31, 2012  
 LOS ANGELES COUNTY

Year of Diagnosis	Race/Ethnicity					Total (2) No. (Rate)
	White No. (Rate)	Black No. (Rate)	Hispanic/Latino No. (Rate)	Asian/PI No. (Rate)	AI/AN No. (Rate)	
<b>MALE</b>						
2003	564 ( 42)	268 ( 78)	658 ( 39)	51 ( 10)	7 ( 58)	1561 ( 40)
2004	411 ( 31)	240 ( 69)	625 ( 36)	47 ( 9)	6 ( 49)	1349 ( 34)
2005	390 ( 29)	256 ( 74)	557 ( 31)	44 ( 8)	5 ( 39)	1265 ( 31)
2006	390 ( 29)	217 ( 63)	530 ( 29)	42 ( 8)	<5 ( -)	1201 ( 30)
2007	296 ( 22)	199 ( 57)	508 ( 28)	44 ( 8)	9 ( 70)	1067 ( 26)
2008	365 ( 27)	226 ( 64)	530 ( 29)	54 ( 10)	7 ( 58)	1215 ( 29)
2009	347 ( 25)	239 ( 67)	587 ( 31)	45 ( 8)	5 ( 43)	1241 ( 30)
2010 (3)	237 ( 17)	227 ( 63)	504 ( 27)	42 ( 7)	9 ( 78)	1027 ( 25)
2011 (3)	222 ( 16)	177 ( 49)	386 ( 21)	40 ( 7)	<5 ( -)	844 ( 20)
2012 (3)	157 ( 11)	126 ( 35)	337 ( 18)	31 ( 6)	6 ( 52)	673 ( 16)
<b>Cumulative</b>						
Male subtotal	24270	10035	18366	1268	224	54808
<b>FEMALE</b>						
2003	25 ( 2)	75 ( 18)	106 ( 6)	5 ( 1)	<5 ( -)	214 ( 5)
2004	35 ( 3)	74 ( 18)	69 ( 4)	6 ( 1)	<5 ( -)	187 ( 5)
2005	25 ( 2)	76 ( 18)	69 ( 4)	6 ( 1)	<5 ( -)	181 ( 4)
2006	17 ( 1)	65 ( 16)	87 ( 5)	5 ( 1)	<5 ( -)	179 ( 4)
2007	21 ( 2)	60 ( 14)	65 ( 4)	<5 ( -)	<5 ( -)	154 ( 4)
2008	23 ( 2)	72 ( 17)	69 ( 4)	7 ( 1)	<5 ( -)	173 ( 4)
2009	22 ( 2)	60 ( 14)	73 ( 4)	5 ( 1)	<5 ( -)	164 ( 4)
2010 (3)	16 ( 1)	59 ( 14)	59 ( 3)	<5 ( -)	<5 ( -)	137 ( 3)
2011 (3)	14 ( 1)	55 ( 13)	42 ( 2)	<5 ( -)	<5 ( -)	116 ( 3)
2012 (3)	8 ( 1)	33 ( 8)	29 ( 2)	<5 ( -)	<5 ( -)	74 ( 2)
<b>Cumulative</b>						
Female subtotal	998	1952	2049	116	32	5198
<b>BOTH</b>						
2003	589 ( 22)	343 ( 45)	764 ( 23)	56 ( 5)	8 ( 32)	1775 ( 22)
2004	446 ( 16)	314 ( 41)	694 ( 20)	53 ( 5)	7 ( 27)	1536 ( 19)
2005	415 ( 15)	332 ( 44)	626 ( 18)	50 ( 4)	6 ( 23)	1446 ( 18)
2006	407 ( 15)	282 ( 37)	617 ( 17)	47 ( 4)	6 ( 22)	1380 ( 17)
2007	317 ( 12)	259 ( 34)	573 ( 16)	48 ( 4)	10 ( 38)	1221 ( 15)
2008	388 ( 14)	298 ( 38)	599 ( 16)	61 ( 5)	7 ( 28)	1388 ( 16)
2009	369 ( 13)	299 ( 38)	660 ( 18)	50 ( 4)	6 ( 25)	1405 ( 17)
2010 (3)	253 ( 9)	286 ( 37)	563 ( 15)	42 ( 3)	9 ( 37)	1164 ( 14)
2011 (3)	236 ( 9)	232 ( 30)	428 ( 11)	43 ( 4)	5 ( 21)	960 ( 11)
2012 (3)	165 ( 6)	159 ( 20)	366 ( 10)	32 ( 3)	7 ( 29)	747 ( 9)
<b>Cumulative Total</b>						
1982-2012	25268	11987	20415	1384	256	60006

1. Rates are based on population estimates for 2003-2009. Rates for 2010-2012 are calculated using population estimates for 2009. Rates based on observations fewer than 12 may not be reliable (see Technical Notes).
2. Total includes persons who have multiple races/ethnicities or have missing information on race/ethnicity.
3. Data are provisional due to reporting delay.

TABLE 21. AIDS DIAGNOSES BY GENDER, TRANSMISSION CATEGORY, AND YEAR OF DIAGNOSIS, REPORTED BY DECEMBER 31, 2012, LOS ANGELES COUNTY

Transmission Category (1)	Year of Diagnosis									Cumulative 1982-2012 No. (%)
	2004 No. (%)	2005 No. (%)	2006 No. (%)	2007 No. (%)	2008 No. (%)	2009 No. (%)	2010(2) No. (%)	2011(2) No. (%)	2012(2) No. (%)	
<b>MALE</b>										
Male-male sexual contact	1103 ( 82)	1045 ( 83)	1003 ( 84)	883 ( 83)	1052 ( 87)	1067 ( 86)	905 ( 88)	755 ( 89)	604 ( 90)	45465 ( 83)
Injection drug user (IDU)	81 ( 6)	70 ( 6)	53 ( 4)	42 ( 4)	37 ( 3)	48 ( 4)	30 ( 3)	22 ( 3)	23 ( 3)	3131 ( 6)
Male-male sexual contact/IDU	111 ( 8)	102 ( 8)	99 ( 8)	105 ( 10)	96 ( 8)	83 ( 7)	67 ( 6)	46 ( 5)	37 ( 6)	4481 ( 8)
Hemophilia or coagulation disorder	<5 ( -)	<5 ( -)	<5 ( -)	<5 ( -)	<5 ( -)	<5 ( -)	<5 ( -)	<5 ( -)	<5 ( -)	471 ( 1)
Heterosexual contact	54 ( 4)	45 ( 4)	40 ( 3)	35 ( 3)	26 ( 2)	36 ( 3)	20 ( 2)	18 ( 2)	7 ( 1)	1270 ( 2)
Perinatal transmission	<5 ( -)	<5 ( -)	5 ( <1)	<5 ( -)	<5 ( -)	5 ( <1)	6 ( 1)	<5 ( -)	<5 ( -)	122 ( <1)
Other/Undetermined	<5 ( -)	<5 ( -)	<5 ( -)	<5 ( -)	<5 ( -)	<5 ( -)	<5 ( -)	<5 ( -)	<5 ( -)	9 ( <1)
Male subtotal	1351	1265	1201	1067	1215	1241	1028	845	673	54949
[% of annual cases]	[ 88]	[ 87]	[ 87]	[ 87]	[ 87]	[ 88]	[ 88]	[ 88]	[ 90]	[ 91]
<b>FEMALE</b>										
Injection drug user (IDU)	53 ( 29)	48 ( 26)	42 ( 24)	30 ( 20)	43 ( 25)	38 ( 23)	31 ( 22)	20 ( 17)	15 ( 21)	1560 ( 29)
Hemophilia or coagulation disorder	<5 ( -)	<5 ( -)	<5 ( -)	<5 ( -)	<5 ( -)	<5 ( -)	<5 ( -)	<5 ( -)	<5 ( -)	237 ( 4)
Heterosexual contact	130 ( 69)	131 ( 72)	132 ( 74)	122 ( 79)	128 ( 74)	119 ( 73)	101 ( 74)	93 ( 80)	59 ( 79)	3390 ( 64)
Perinatal transmission	<5 ( -)	<5 ( -)	<5 ( -)	<5 ( -)	<5 ( -)	6 ( 4)	<5 ( -)	<5 ( -)	<5 ( -)	122 ( 2)
Other/Undetermined	<5 ( -)	<5 ( -)	<5 ( -)	<5 ( -)	<5 ( -)	<5 ( -)	<5 ( -)	<5 ( -)	<5 ( -)	5 ( <1)
Female subtotal	187	183	179	155	174	164	137	116	74	5314
[% of annual cases]	[ 12]	[ 13]	[ 13]	[ 13]	[ 13]	[ 12]	[ 12]	[ 12]	[ 10]	[ 9]
<b>Total</b>	<b>1538</b>	<b>1448</b>	<b>1380</b>	<b>1222</b>	<b>1389</b>	<b>1405</b>	<b>1165</b>	<b>961</b>	<b>747</b>	<b>60263</b>

1. Persons without an identified risk factor are assigned a risk factor using multiple imputation (MI) methods (see Technical Notes).  
 2. Data are provisional due to reporting delay.



TABLE 22. AIDS DIAGNOSES AMONG WHITES BY GENDER, TRANSMISSION CATEGORY, AND YEAR OF DIAGNOSIS, REPORTED BY DECEMBER 31, 2012, LOS ANGELES COUNTY

Transmission Category (1)	Year of Diagnosis									Cumulative 1982-2012 No. (%)
	2004 No. (%)	2005 No. (%)	2006 No. (%)	2007 No. (%)	2008 No. (%)	2009 No. (%)	2010(2) No. (%)	2011(2) No. (%)	2012(2) No. (%)	
<b>MALE</b>										
Male-male sexual contact	341 ( 83)	326 ( 84)	338 ( 87)	249 ( 84)	317 ( 87)	306 ( 88)	211 ( 89)	197 ( 89)	137 ( 87)	21031 ( 87)
Injection drug user (IDU)	20 ( 5)	19 ( 5)	12 ( 3)	10 ( 3)	10 ( 3)	9 ( 3)	<5 ( -)	5 ( 2)	6 ( 4)	817 ( 3)
Male-male sexual contact/IDU	45 ( 11)	41 ( 11)	34 ( 9)	34 ( 11)	36 ( 10)	26 ( 7)	21 ( 9)	18 ( 8)	14 ( 9)	2026 ( 8)
Hemophilia or coagulation disorder	<5 ( -)	<5 ( -)	<5 ( -)	<5 ( -)	<5 ( -)	<5 ( -)	<5 ( -)	<5 ( -)	<5 ( -)	237 ( 1)
Heterosexual contact	6 ( 1)	<5 ( -)	5 ( 1)	<5 ( -)	<5 ( -)	6 ( 2)	<5 ( -)	<5 ( -)	<5 ( -)	169 ( 1)
Perinatal transmission	<5 ( -)	<5 ( -)	<5 ( -)	<5 ( -)	<5 ( -)	<5 ( -)	<5 ( -)	<5 ( -)	<5 ( -)	14 ( <1)
Male subtotal	411	390	390	296	365	347	237	222	157	24295
[% of annual cases]	[ 92]	[ 94]	[ 96]	[ 93]	[ 94]	[ 94]	[ 94]	[ 94]	[ 95]	[ 96]
<b>FEMALE</b>										
Injection drug user (IDU)	19 ( 55)	11 ( 42)	8 ( 46)	9 ( 41)	11 ( 46)	6 ( 28)	7 ( 42)	5 ( 32)	<5 ( -)	426 ( 42)
Hemophilia or coagulation disorder	<5 ( -)	<5 ( -)	<5 ( -)	<5 ( -)	<5 ( -)	<5 ( -)	<5 ( -)	<5 ( -)	<5 ( -)	87 ( 9)
Heterosexual contact	16 ( 45)	13 ( 50)	9 ( 54)	12 ( 59)	12 ( 54)	16 ( 72)	9 ( 58)	10 ( 68)	5 ( 61)	490 ( 48)
Perinatal transmission	<5 ( -)	<5 ( -)	<5 ( -)	<5 ( -)	<5 ( -)	<5 ( -)	<5 ( -)	<5 ( -)	<5 ( -)	13 ( 1)
Other/Undetermined	<5 ( -)	<5 ( -)	<5 ( -)	<5 ( -)	<5 ( -)	<5 ( -)	<5 ( -)	<5 ( -)	<5 ( -)	<5 ( -)
Female subtotal	35	26	17	21	23	22	16	14	8	1018
[% of annual cases]	[ 8]	[ 6]	[ 4]	[ 7]	[ 6]	[ 6]	[ 6]	[ 6]	[ 5]	[ 4]
<b>Total</b>	<b>446</b>	<b>416</b>	<b>407</b>	<b>317</b>	<b>388</b>	<b>369</b>	<b>253</b>	<b>236</b>	<b>165</b>	<b>25313</b>

1. Persons without an identified risk factor are assigned a risk factor using multiple imputation (MI) methods (see Technical Notes).  
 2. Data are provisional due to reporting delay.

TABLE 23. AIDS DIAGNOSES AMONG BLACKS BY GENDER, TRANSMISSION CATEGORY, AND YEAR OF DIAGNOSIS, REPORTED BY DECEMBER 31, 2012, LOS ANGELES COUNTY

Transmission Category (1)	Year of Diagnosis									Cumulative 1982-2012 No. (%)
	2004 No. (%)	2005 No. (%)	2006 No. (%)	2007 No. (%)	2008 No. (%)	2009 No. (%)	2010(2) No. (%)	2011(2) No. (%)	2012(2) No. (%)	
<b>MALE</b>										
Male-male sexual contact	181 ( 75)	196 ( 77)	161 ( 74)	152 ( 77)	192 ( 85)	189 ( 79)	194 ( 85)	153 ( 86)	110 ( 87)	7385 ( 73)
Injection drug user (IDU)	21 ( 9)	24 ( 10)	14 ( 6)	11 ( 6)	8 ( 4)	17 ( 7)	11 ( 5)	6 ( 3)	5 ( 4)	1143 ( 11)
Male-male sexual contact/IDU	26 ( 11)	20 ( 8)	27 ( 12)	25 ( 13)	16 ( 7)	21 ( 9)	14 ( 6)	10 ( 5)	7 ( 6)	1054 ( 10)
Hemophilia or coagulation disorder	<5 ( -)	<5 ( -)	<5 ( -)	<5 ( -)	<5 ( -)	<5 ( -)	<5 ( -)	<5 ( -)	<5 ( -)	72 ( 1)
Heterosexual contact	12 ( 5)	14 ( 5)	14 ( 6)	10 ( 5)	8 ( 4)	10 ( 4)	8 ( 3)	9 ( 5)	<5 ( -)	381 ( 4)
Perinatal transmission	<5 ( -)	<5 ( -)	<5 ( -)	<5 ( -)	<5 ( -)	<5 ( -)	<5 ( -)	<5 ( -)	<5 ( -)	48 (<1)
Other/Undetermined	<5 ( -)	<5 ( -)	<5 ( -)	<5 ( -)	<5 ( -)	<5 ( -)	<5 ( -)	<5 ( -)	<5 ( -)	<5 ( -)
Male subtotal	241	256	217	199	226	239	227	178	126	10086
[% of annual cases]	[ 77]	[ 77]	[ 77]	[ 77]	[ 76]	[ 80]	[ 79]	[ 76]	[ 79]	[ 84]
<b>FEMALE</b>										
Injection drug user (IDU)	20 ( 26)	21 ( 27)	15 ( 24)	11 ( 18)	20 ( 28)	17 ( 29)	16 ( 26)	11 ( 21)	5 ( 16)	678 ( 34)
Hemophilia or coagulation disorder	<5 ( -)	<5 ( -)	<5 ( -)	<5 ( -)	<5 ( -)	<5 ( -)	<5 ( -)	<5 ( -)	<5 ( -)	54 ( 3)
Heterosexual contact	52 ( 70)	54 ( 72)	48 ( 73)	49 ( 81)	52 ( 71)	40 ( 66)	42 ( 72)	43 ( 77)	28 ( 84)	1215 ( 61)
Perinatal transmission	<5 ( -)	<5 ( -)	<5 ( -)	<5 ( -)	<5 ( -)	<5 ( -)	<5 ( -)	<5 ( -)	<5 ( -)	43 ( 2)
Female subtotal	74	76	65	61	73	60	59	55	33	1990
[% of annual cases]	[ 23]	[ 23]	[ 23]	[ 23]	[ 24]	[ 20]	[ 21]	[ 24]	[ 21]	[ 16]
<b>Total</b>	<b>315</b>	<b>332</b>	<b>282</b>	<b>260</b>	<b>299</b>	<b>299</b>	<b>286</b>	<b>233</b>	<b>159</b>	<b>12076</b>

1. Persons without an identified risk factor are assigned a risk factor using multiple imputation (MI) methods (see Technical Notes).  
 2. Data are provisional due to reporting delay.

TABLE 24. AIDS DIAGNOSES AMONG HISPANICS/LATINOS BY GENDER, TRANSMISSION CATEGORY, AND YEAR OF DIAGNOSIS, REPORTED BY DECEMBER 31, 2012, LOS ANGELES COUNTY

Transmission Category (1)	Year of Diagnosis									Cumulative 1982-2012 No. (%)
	2004 No. (%)	2005 No. (%)	2006 No. (%)	2007 No. (%)	2008 No. (%)	2009 No. (%)	2010(2) No. (%)	2011(2) No. (%)	2012(2) No. (%)	
<b>MALE</b>										
Male-male sexual contact	524 ( 84)	475 ( 85)	451 ( 85)	426 ( 84)	462 ( 87)	514 ( 88)	449 ( 89)	352 ( 91)	310 ( 92)	15248 ( 83)
Injection drug user (IDU)	36 ( 6)	22 ( 4)	25 ( 5)	18 ( 4)	17 ( 3)	18 ( 3)	16 ( 3)	11 ( 3)	10 ( 3)	1092 ( 6)
Male-male sexual contact/IDU	34 ( 5)	31 ( 6)	35 ( 7)	42 ( 8)	37 ( 7)	31 ( 5)	27 ( 5)	16 ( 4)	12 ( 3)	1218 ( 7)
Hemophilia or coagulation disorder	<5 ( -)	<5 ( -)	<5 ( -)	<5 ( -)	<5 ( -)	<5 ( -)	<5 ( -)	<5 ( -)	<5 ( -)	134 ( 1)
Heterosexual contact	30 ( 5)	28 ( 5)	17 ( 3)	20 ( 4)	14 ( 3)	19 ( 3)	9 ( 2)	6 ( 2)	<5 ( -)	673 ( 4)
Perinatal transmission	<5 ( -)	<5 ( -)	<5 ( -)	<5 ( -)	<5 ( -)	<5 ( -)	<5 ( -)	<5 ( -)	<5 ( -)	55 (<1)
Other/Undetermined	<5 ( -)	<5 ( -)	<5 ( -)	<5 ( -)	<5 ( -)	<5 ( -)	<5 ( -)	<5 ( -)	<5 ( -)	6 (<1)
Male subtotal	625	557	530	508	530	587	504	386	337	18426
[% of annual cases]	[ 90]	[ 89]	[ 86]	[ 89]	[ 88]	[ 89]	[ 90]	[ 90]	[ 92]	[ 90]
<b>FEMALE</b>										
Injection drug user (IDU)	14 ( 20)	12 ( 17)	15 ( 17)	9 ( 13)	10 ( 15)	12 ( 16)	7 ( 12)	<5 ( -)	6 ( 20)	401 ( 19)
Hemophilia or coagulation disorder	<5 ( -)	<5 ( -)	<5 ( -)	<5 ( -)	<5 ( -)	<5 ( -)	<5 ( -)	<5 ( -)	<5 ( -)	79 ( 4)
Heterosexual contact	54 ( 79)	57 ( 82)	70 ( 80)	54 ( 84)	57 ( 82)	57 ( 79)	48 ( 81)	37 ( 87)	23 ( 80)	1555 ( 74)
Perinatal transmission	<5 ( -)	<5 ( -)	<5 ( -)	<5 ( -)	<5 ( -)	<5 ( -)	<5 ( -)	<5 ( -)	<5 ( -)	66 ( 3)
Other/Undetermined	<5 ( -)	<5 ( -)	<5 ( -)	<5 ( -)	<5 ( -)	<5 ( -)	<5 ( -)	<5 ( -)	<5 ( -)	<5 ( -)
Female subtotal	69	70	87	65	69	73	59	42	29	2104
[% of annual cases]	[ 10]	[ 11]	[ 14]	[ 11]	[ 12]	[ 11]	[ 10]	[ 10]	[ 8]	[ 10]
<b>Total</b>	<b>694</b>	<b>627</b>	<b>617</b>	<b>573</b>	<b>599</b>	<b>660</b>	<b>563</b>	<b>428</b>	<b>366</b>	<b>20530</b>

1. Persons without an identified risk factor are assigned a risk factor using multiple imputation (MI) methods (see Technical Notes).

2. Data are provisional due to reporting delay.

TABLE 25. PERSONS LIVING WITH AIDS AND RATES PER 100,000 (1) AT THE END OF CALENDAR YEAR, BY GENDER, AGE, RACE/ETHNICITY, AND TRANSMISSION CATEGORY REPORTED BY DECEMBER 31, 2012, LOS ANGELES COUNTY

Calendar Year	2005			2006			2007			2008			2009			2010 (2)			2011 (2)			2012 (2)		
	No.	(%)	Rate	No.	(%)	Rate	No.	(%)	Rate	No.	(%)	Rate	No.	(%)	Rate	No.	(%)	Rate	No.	(%)	Rate	No.	(%)	Rate
<b>GENDER</b>																								
Male	19042	(88)	377	19711	(88)	387	20280	(88)	396	20998	(88)	409	21778	(88)	422	22375	(88)	433	22946	(88)	445	23429	(88)	454
Female	2322	(11)	45	2411	(11)	46	2501	(11)	48	2596	(11)	50	2673	(11)	51	2755	(11)	52	2813	(11)	54	2861	(11)	54
Transgender (1)	211	(1)	-	211	(1)	-	224	(1)	-	230	(1)	-	244	(1)	-	248	(1)	-	263	(1)	-	273	(1)	-
<b>AGE GROUP (3)</b>																								
<13	36	(<1)	2	28	(<1)	1	21	(<1)	1	19	(<1)	1	14	(<1)	1	12	(<1)	1	11	(<1)	1	9	(<1)	<1
13-19	55	(<1)	5	64	(<1)	6	62	(<1)	6	56	(<1)	5	71	(<1)	6	69	(<1)	6	64	(<1)	6	60	(<1)	5
20-29	878	(4)	61	884	(4)	62	916	(4)	63	918	(4)	63	968	(4)	66	991	(4)	67	976	(4)	66	909	(3)	62
30-39	5255	(24)	326	4881	(22)	306	4524	(20)	288	4250	(18)	275	4025	(16)	263	3789	(15)	248	3644	(14)	238	3420	(13)	224
40-49	9498	(44)	619	9878	(44)	639	10100	(44)	653	10330	(43)	665	10437	(42)	668	10281	(41)	658	9877	(38)	633	9461	(36)	606
50-59	4467	(21)	393	5021	(22)	428	5534	(24)	461	6141	(26)	499	6782	(27)	539	7394	(29)	588	8177	(31)	650	8912	(34)	709
60+	1386	(6)	99	1577	(7)	110	1848	(8)	126	2110	(9)	138	2398	(10)	152	2842	(11)	181	3273	(13)	208	3792	(14)	241
<b>RACE/ETHNICITY</b>																								
White	7633	(35)	245	7804	(35)	252	7939	(35)	255	8143	(34)	261	8332	(34)	266	8429	(33)	269	8556	(33)	273	8657	(33)	276
Black	4291	(20)	456	4411	(20)	472	4514	(20)	479	4658	(20)	493	4805	(19)	509	4961	(20)	525	5106	(20)	541	5214	(20)	552
Hispanic/Latino	8742	(41)	183	9163	(41)	188	9553	(42)	196	9960	(42)	203	10445	(42)	212	10835	(43)	220	11163	(43)	227	11447	(43)	233
Asian/PI	587	(3)	44	622	(3)	46	657	(3)	48	702	(3)	51	739	(3)	53	779	(3)	56	815	(3)	59	843	(3)	61
AI/AN	97	(<1)	316	100	(<1)	322	103	(<1)	335	103	(<1)	358	106	(<1)	384	109	(<1)	395	108	(<1)	391	113	(<1)	409
<b>TRANSMISSION CATEGORY (1,4)</b>																								
MSM	15800	(73)		16397	(73)		16918	(74)		17610	(74)		18334	(74)		18889	(74)		19444	(75)		19912	(75)	
IDU	1631	(8)		1639	(7)		1639	(7)		1651	(7)		1662	(7)		1682	(7)		1685	(6)		1702	(6)	
MSM/IDU	1668	(8)		1715	(8)		1765	(8)		1796	(8)		1836	(7)		1861	(7)		1879	(7)		1888	(7)	
Hemophi/Transfusion	135	(1)		129	(1)		123	(1)		121	(1)		117	(<1)		117	(<1)		114	(<1)		114	(<1)	
Heterosexual contact	2248	(10)		2355	(11)		2456	(11)		2538	(11)		2627	(11)		2702	(11)		2769	(11)		2813	(11)	
Perinatal exposure	87	(<1)		92	(<1)		97	(<1)		102	(<1)		113	(<1)		120	(<1)		126	(<1)		127	(<1)	
Other/Undetermined	7	(<1)		7	(<1)		7	(<1)		6	(<1)		6	(<1)		6	(<1)		6	(<1)		6	(<1)	
<b>Total (5)</b>	<b>21575</b>	<b>(100)</b>	<b>211</b>	<b>22333</b>	<b>(100)</b>	<b>217</b>	<b>23005</b>	<b>(100)</b>	<b>223</b>	<b>23824</b>	<b>(100)</b>	<b>230</b>	<b>24695</b>	<b>(100)</b>	<b>237</b>	<b>25378</b>	<b>(100)</b>	<b>244</b>	<b>26022</b>	<b>(100)</b>	<b>250</b>	<b>26563</b>	<b>(100)</b>	<b>255</b>

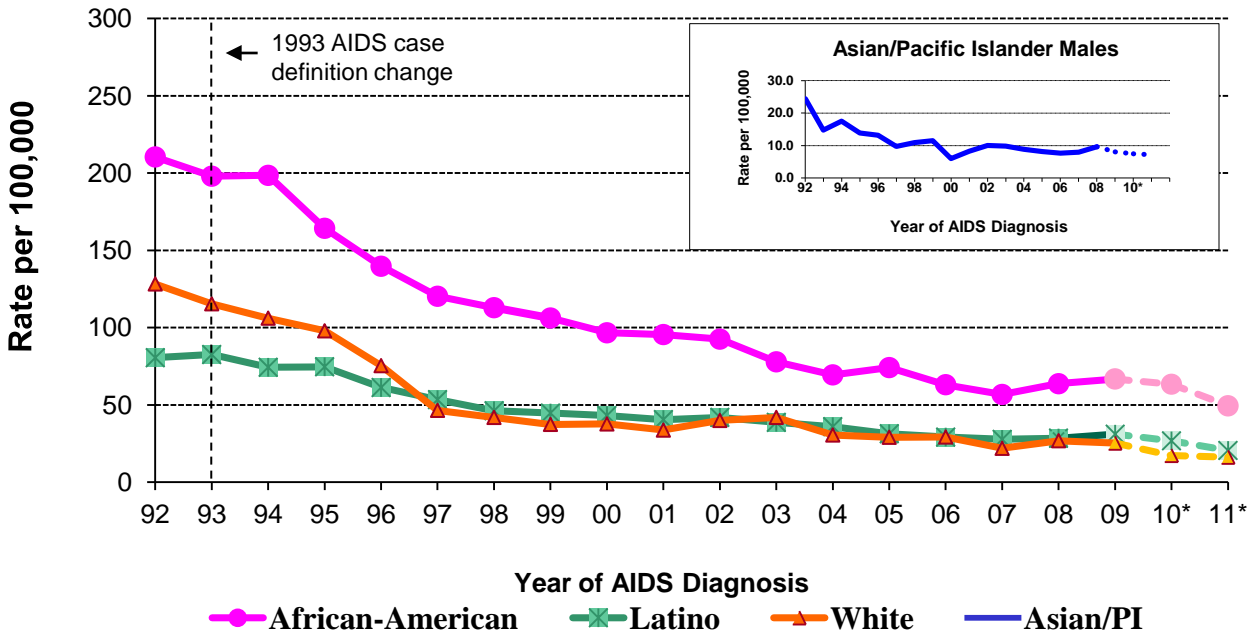
1. Rates for 2010-2012 are calculated using population estimates for 2009. Rates that are based on observations fewer than 12 may not be reliable. Rates for transgender and transmission category are not calculated, because of the lack of denominator data (see Technical Notes).
2. Data are provisional due to reporting delay.
3. Age as of the end of year.
4. Persons without an identified risk factor are assigned a risk factor using multiple imputation (MI) methods (see Technical Notes).
5. Total includes persons who have multiple races/ethnicities or have missing information on race/ethnicity.

TABLE 26. PERSONS LIVING WITH AIDS AND RATES PER 100,000 (1) AS OF DECEMBER 31, 2012  
 BY SERVICE PLANNING AREA (SPA), GENDER, AGE, RACE/ETHNICITY AND TRANSMISSION CATEGORY, LOS ANGELES COUNTY

Service Planning Area	Antelope Valley No. (%) Rate	San Fernando No. (%) Rate	San Gabriel No. (%) Rate	Metro No. (%) Rate	West No. (%) Rate	South No. (%) Rate	East No. (%) Rate	South Bay/LB No. (%) Rate	Total (2) No. (%) Rate
<b>GENDER</b>									
Male	264 (79) 144	3260 (89) 295	1580 (85) 171	8994 (92)1405	1280 (91) 404	2197 (78) 427	1532 (85) 224	4262 (87) 536	23429 (88) 454
Female	67 (20) 37	359 (10) 32	263 (14) 27	642 ( 7) 106	122 ( 9) 36	562 (20) 105	250 (14) 36	590 (12) 72	2861 (11) 54
Transgender(3)	<5 ( -) -	41 ( 1) -	21 ( 1) -	108 ( 1) -	7 (<1) -	40 ( 1) -	13 ( 1) -	38 ( 1) -	273 ( 1) -
<b>AGE GROUP (4)</b>									
<13	<5 ( -) -	<5 ( -) -	<5 ( -) -	<5 ( -) -	<5 ( -) -	<5 ( -) -	<5 ( -) -	<5 ( -) -	9 (<1) <1
13-19	<5 ( -) -	6 (<1) 3	<5 ( -) -	14 (<1) 12	<5 ( -) -	15 ( 1) 11	8 (<1) 5	10 (<1) 6	60 (<1) 5
20-29	11 ( 3) 17	114 ( 3) 37	82 ( 4) 29	247 ( 3) 164	30 ( 2) 45	165 ( 6) 96	76 ( 4) 35	183 ( 4) 84	909 ( 3) 62
30-39	48 (14) 123	444 (12) 143	257 (14) 100	1032 (11) 453	136 (10) 118	497 (18) 326	301 (17) 151	699 (14) 308	3420 (13) 224
40-49	104 (31) 205	1251 (34) 361	661 (35) 243	3608 (37)1722	454 (32) 395	929 (33) 713	672 (37) 358	1759 (36) 705	9461 (36) 606
50-59	119 (36) 264	1269 (35) 434	582 (31) 242	3409 (35)2360	541 (38) 595	830 (30) 876	503 (28) 337	1634 (33) 819	8912 (34) 709
60+	49 (15) 110	575 (16) 163	277 (15) 89	1431 (15) 781	247 (18) 192	362 (13) 325	235 (13) 123	602 (12) 238	3792 (14) 241
<b>RACE/ETHNICITY</b>									
White	111 (33) 71	1518 (41) 145	394 (21) 85	3739 (38)1338	784 (56) 187	88 ( 3) 337	205 (11) 87	1786 (37) 352	8657 (33) 276
Black	96 (29) 186	402 (11) 520	261 (14) 326	1521 (16)2102	212 (15) 490	1373 (49) 412	102 ( 6) 274	1234 (25) 495	5214 (20) 552
Hispanic/Latino	117 (35) 83	1549 (42) 181	1037 (56) 121	4051 (42) 591	339 (24) 314	1293 (46) 192	1423 (79) 145	1616 (33) 264	11447 (43) 233
Asian/PI	5 ( 2) 35	126 ( 3) 54	149 ( 8) 31	275 ( 3) 134	46 ( 3) 58	7 (<1) 37	48 ( 3) 39	185 ( 4) 76	843 ( 3) 61
AI/AN	<5 ( -) -	16 (<1) 269	8 (<1) 175	50 ( 1)1475	9 ( 1) 656	8 (<1) 463	6 (<1) 142	15 (<1) 343	113 (<1) 409
<b>TRANSMISSION CATEGORY (3,5)</b>									
MSM	188 (57)	2765 (76)	1316 (71)	7838 (80)	1117 (79)	1782 (64)	1290 (72)	3568 (73)	19912 (75)
IDU	48 (14)	229 ( 6)	166 ( 9)	454 ( 5)	77 ( 5)	255 ( 9)	129 ( 7)	336 ( 7)	1702 ( 6)
MSM/IDU	28 ( 8)	248 ( 7)	107 ( 6)	773 ( 8)	84 ( 6)	155 ( 6)	102 ( 6)	382 ( 8)	1888 ( 7)
Hemophi/Transfusion	<5 ( -)	22 ( 1)	13 ( 1)	22 (<1)	10 ( 1)	17 ( 1)	13 ( 1)	16 (<1)	114 (<1)
Heterosexual contact	65 (19)	384 (10)	252 (14)	620 ( 6)	116 ( 8)	559 (20)	247 (14)	566 (12)	2813 (11)
Perinatal exposure	<5 ( -)	12 (<1)	8 (<1)	36 (<1)	5 (<1)	29 ( 1)	12 ( 1)	22 (<1)	127 (<1)
Other/Undetermined	<5 ( -)	<5 ( -)	<5 ( -)	<5 ( -)	<5 ( -)	<5 ( -)	<5 ( -)	<5 ( -)	6 (<1)
<b>Total [% of total] (6)</b>	<b>333 [ 1] 91</b>	<b>3660 [ 14]165</b>	<b>1864 [ 7] 99</b>	<b>9744 [ 37]783</b>	<b>1409 [ 5]216</b>	<b>2799 [ 11]266</b>	<b>1795 [ 7]130</b>	<b>4890 [ 18]302</b>	<b>26563 [100]255</b>

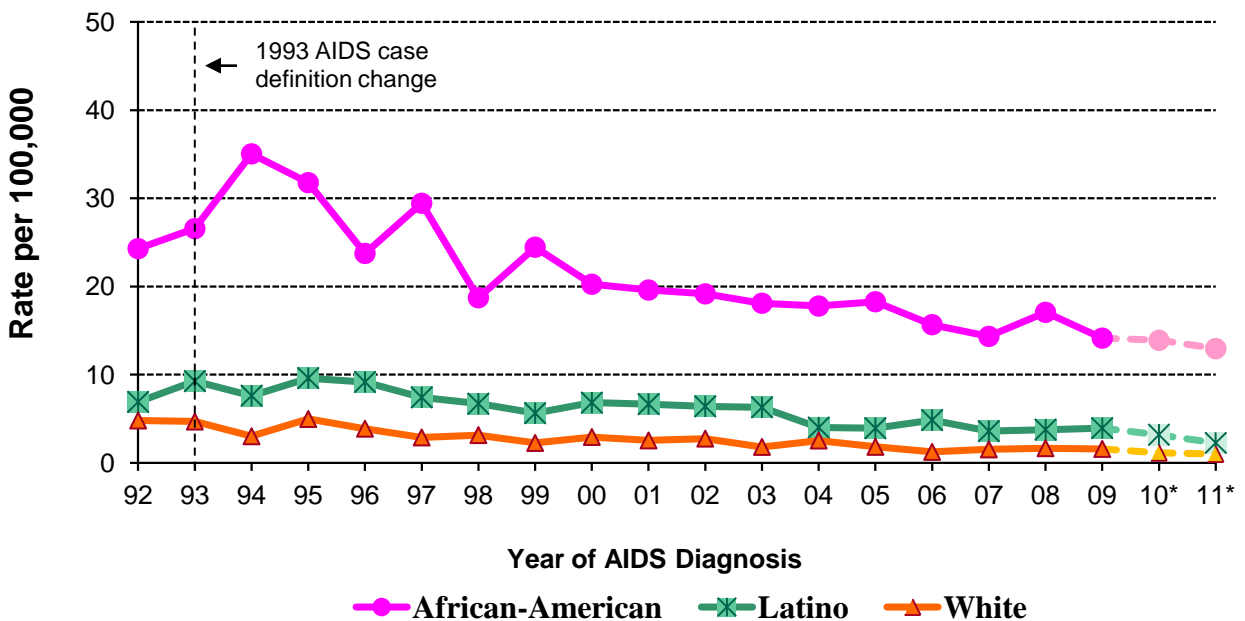
1. Rates are based on year 2009 population estimates. Rates that are based on observations fewer than 12 may not be reliable (see technical notes).
2. Total includes persons with no information on SPA.
3. Rates for transgender and transmission category are not calculated, because of the lack of denominator data.
4. Age as of December 31, 2012.
5. Persons without an identified risk factor are assigned a risk factor using multiple imputation (MI) methods (see technical notes).
6. Total includes persons who have multiple races/ethnicities or have missing information on race/ethnicity.

**FIGURE 4. MALE ADULT/ADOLESCENT AIDS RATES BY RACE/ETHNICITY<sup>1</sup> AND YEAR OF DIAGNOSIS, LOS ANGELES COUNTY, 1992-2011**



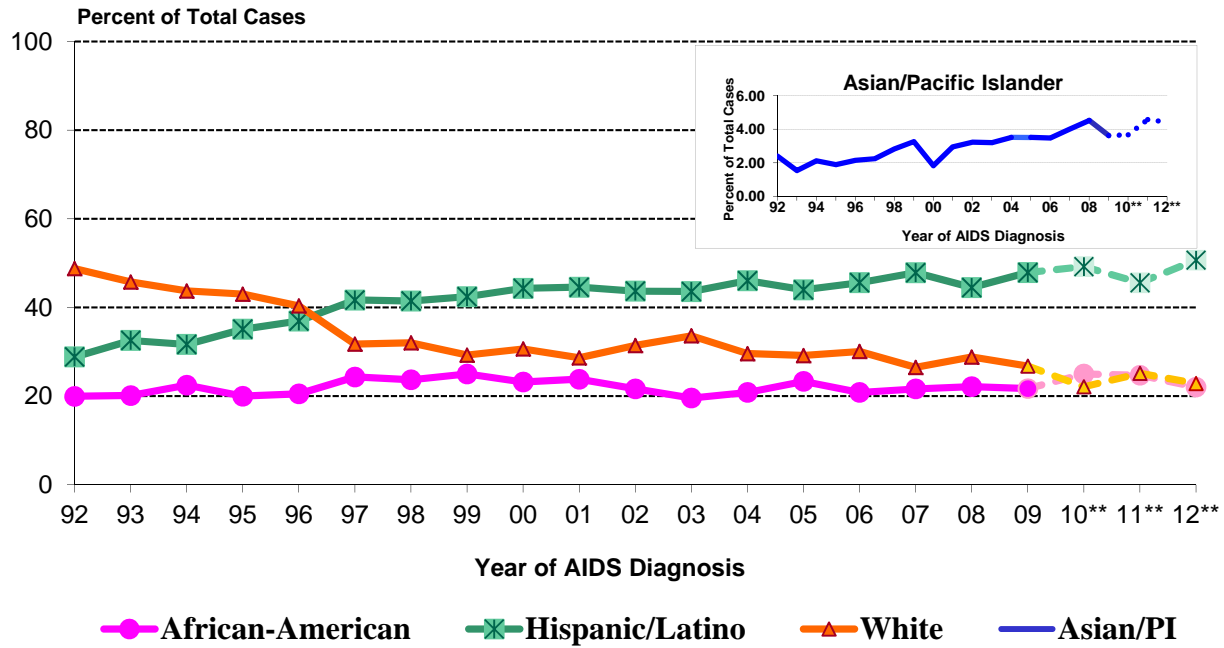
1. AIDS rates for Native Americans and Alaskan Natives are not presented here because rates based on small numbers may result in unstable estimates.  
 \* Data are provisional due to reporting delay.

**FIGURE 5. FEMALE ADULT/ADOLESCENT AIDS RATES BY RACE/ETHNICITY<sup>1</sup> AND YEAR OF DIAGNOSIS, LOS ANGELES COUNTY, 1992-2011**



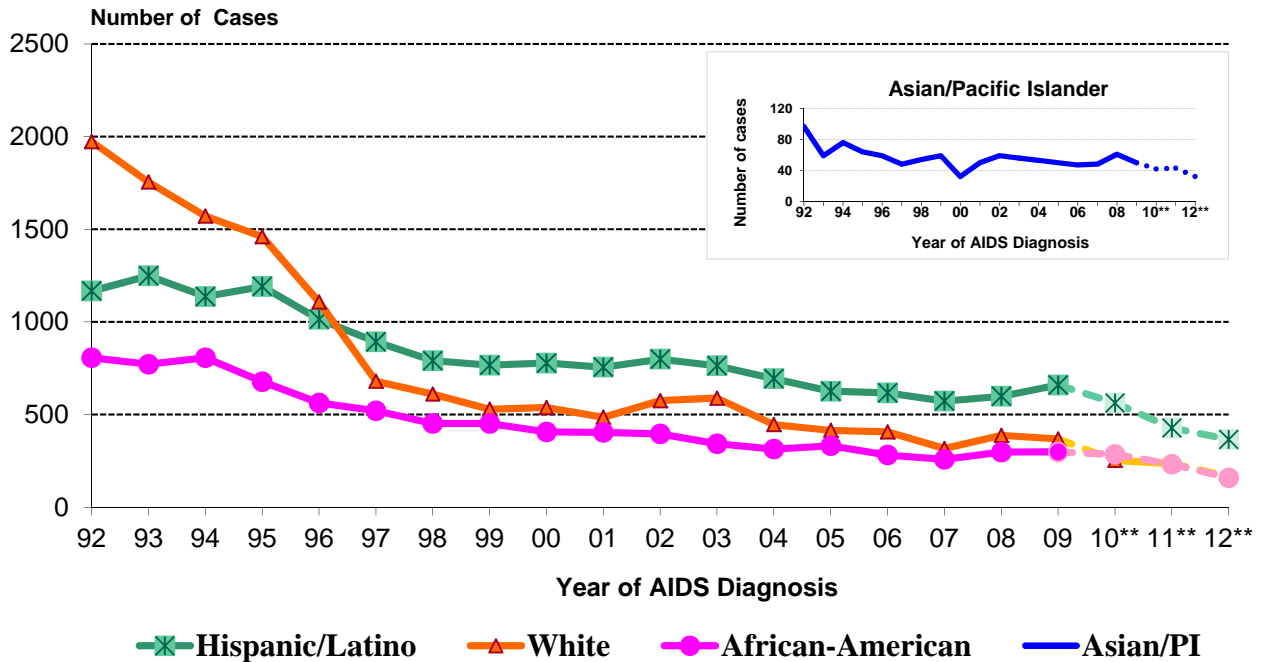
1. AIDS rates for Asian/Pacific Islander females, Native Americans and Alaskan Natives are not presented here because rates based on small numbers may result in unstable estimates.  
 \* Data are provisional due to reporting delay.

**FIGURE 6. PROPORTION OF AIDS DIAGNOSES AMONG ADULTS/ADOLESCENTS BY RACE/ETHNICITY\* AND YEAR OF DIAGNOSIS, LOS ANGELES COUNTY, 1992-2012**



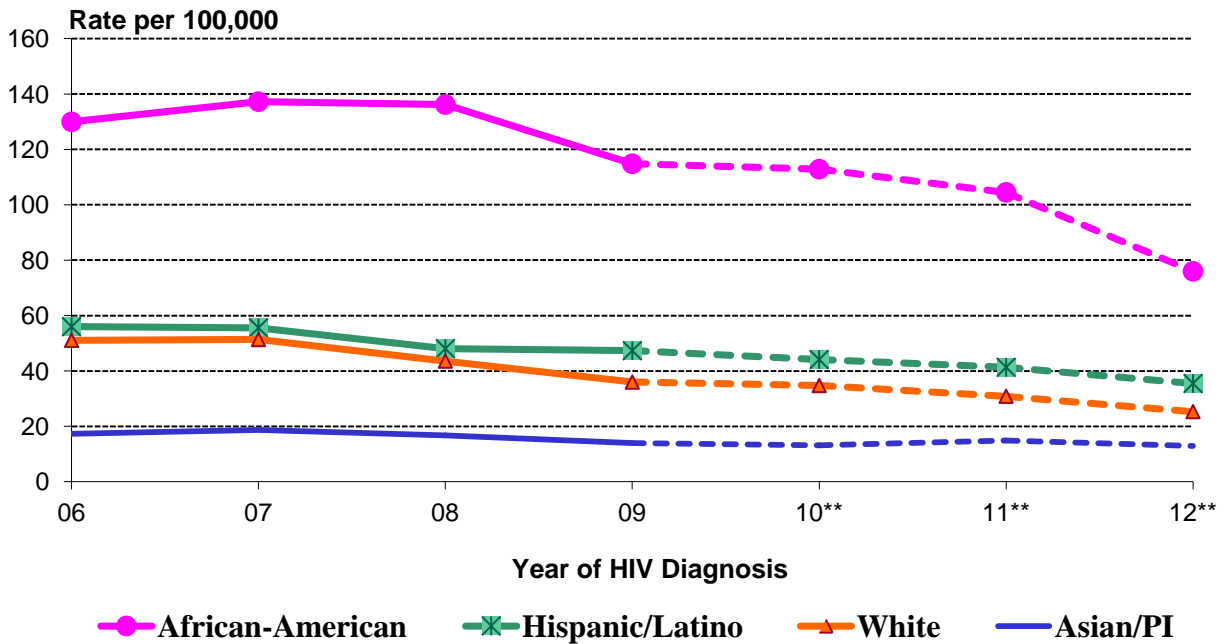
\* American Indian and Alaskan Native are not presented due to small numbers that may cause unstable estimates.  
 \*\* Data are provisional due to reporting delay.

**FIGURE 7. NUMBER OF AIDS DIAGNOSES AMONG ADULTS/ADOLESCENTS BY RACE/ETHNICITY\* AND YEAR OF DIAGNOSIS, LOS ANGELES COUNTY, 1992-2012**



\* American Indian and Alaskan Native are not presented due to small numbers that may cause unstable estimates.  
 \*\* Data are provisional due to reporting delay.

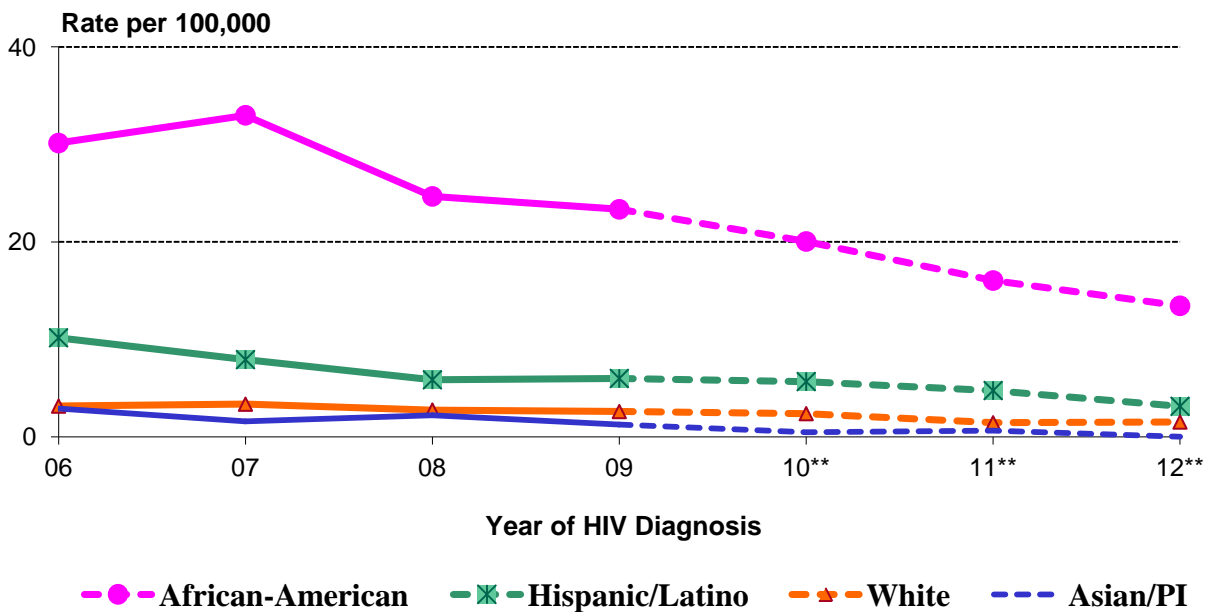
**FIGURE 8. RATES OF HIV/AIDS DIAGNOSES AMONG ADULT/ADOLESCENT MEN BY RACE/ETHNICITY\*, LOS ANGELES COUNTY, 2006-2012**



\* American Indian and Alaskan Native are not presented due to small numbers that may cause unstable estimates.

\*\* Data are provisional due to reporting delay.

**FIGURE 9. RATES OF HIV/AIDS DIAGNOSES AMONG ADULT/ADOLESCENT WOMEN BY RACE/ETHNICITY\*, LOS ANGELES COUNTY, 2006-2012**

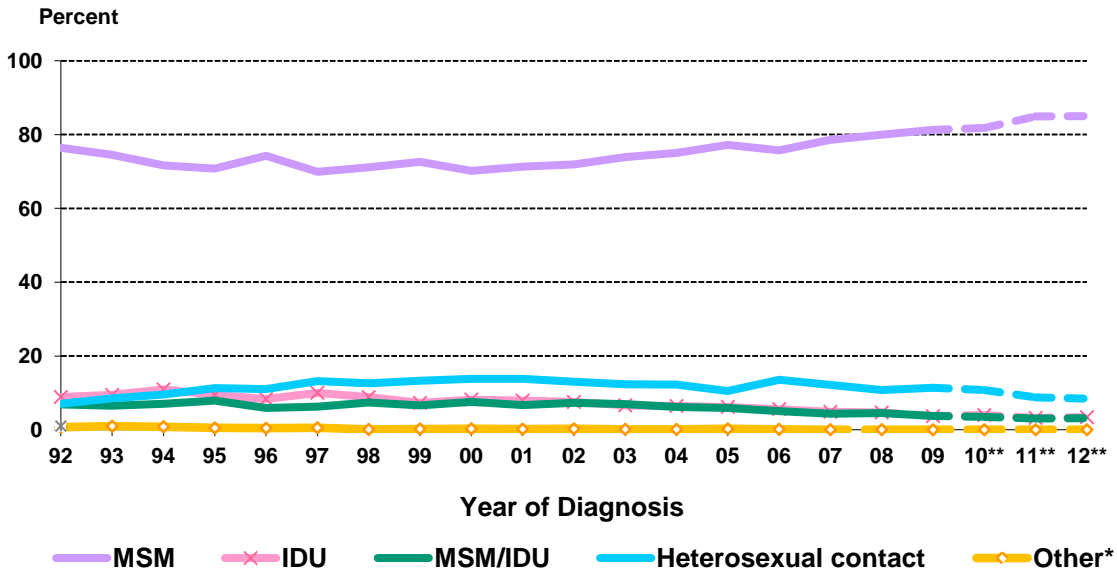


\* American Indian and Alaskan Native are not presented due to small numbers that may cause unstable estimates.

\*\* Data are provisional due to reporting delay.

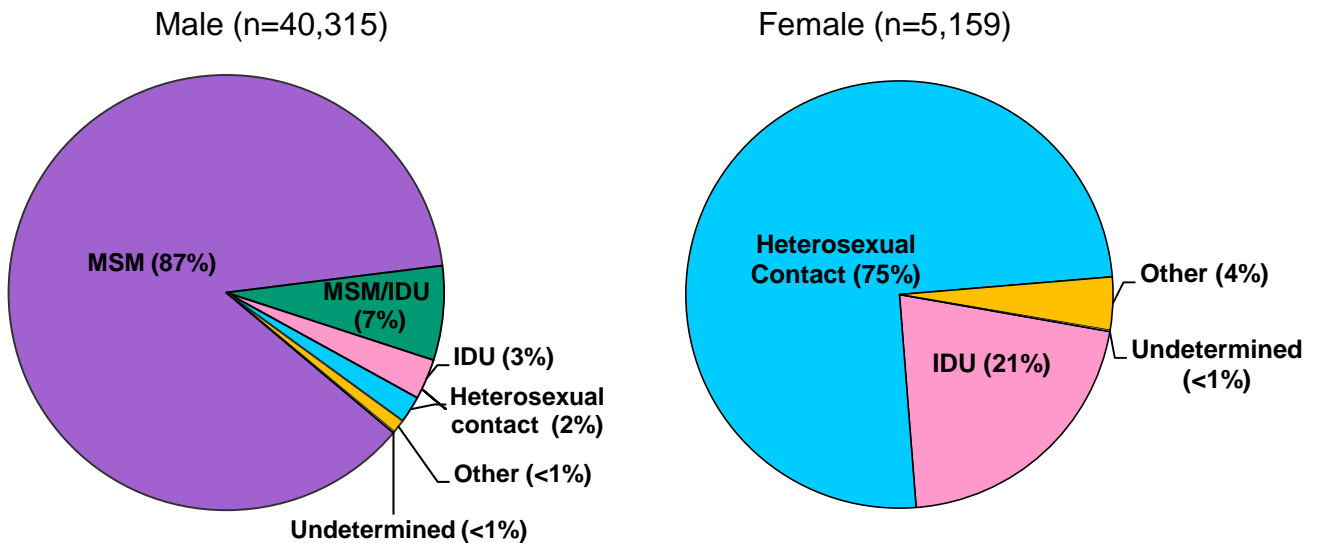


**FIGURE 10. DIAGNOSES OF HIV (INCL AIDS) AMONG ADULTS/ADOLESCENTS, BY TRANSMISSION CATEGORY\* AND YEAR OF HIV DIAGNOSIS, LOS ANGELES COUNTY, 1992-2012**



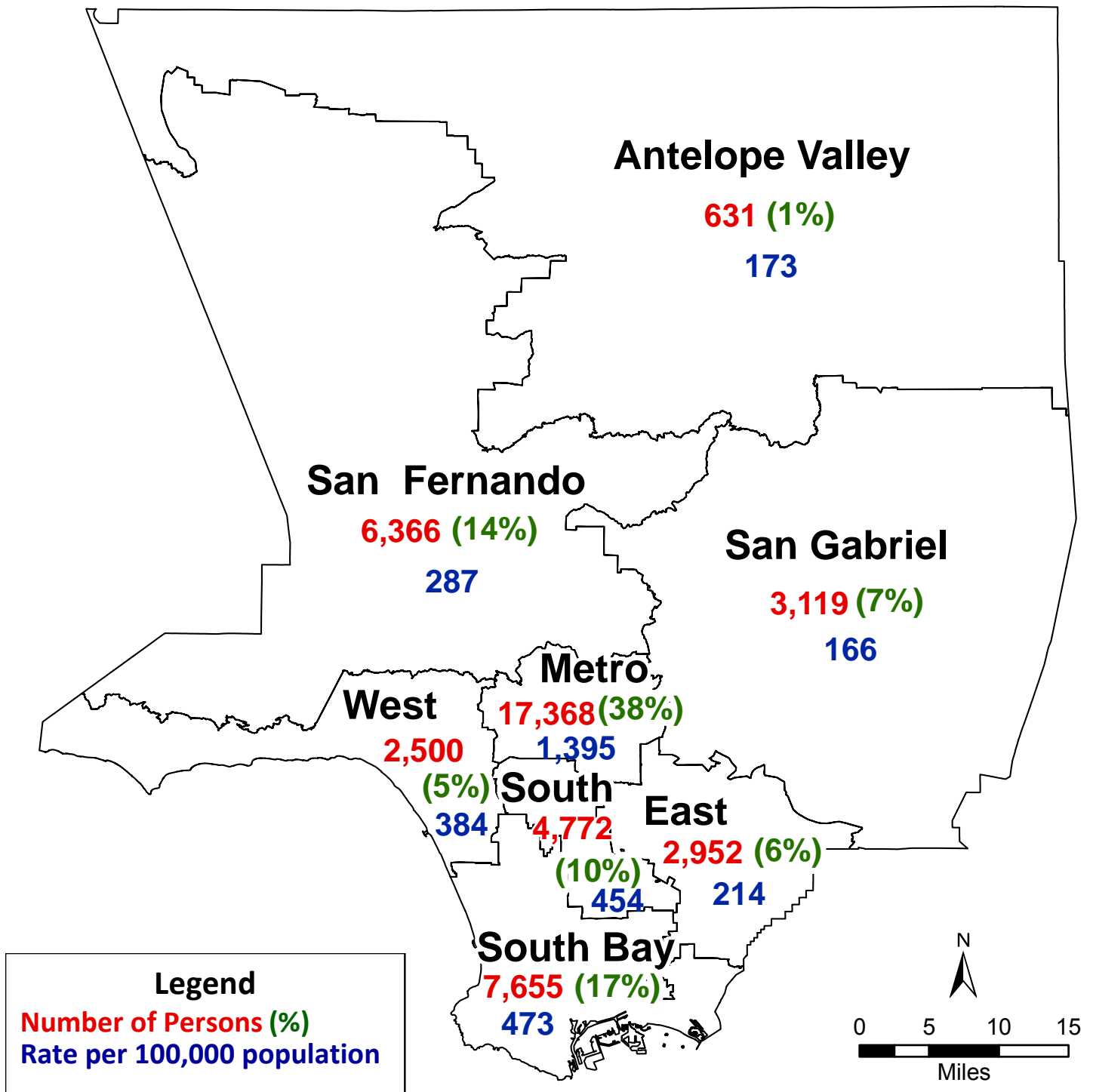
\* Persons with an undetermined transmission category are assigned a risk factor using multiple imputation (MI) methods. Other risks include hemophilia or coagulation disorder, transfusion recipient, perinatal exposure, and confirmed other risk.  
 \*\* Data are provisional due to reporting delay.

**FIGURE 11. TRANSMISSION CATEGORY\* FOR PERSONS LIVING WITH HIV/AIDS\*\* AS OF DECEMBER 31, 2012 BY GENDER IN LOS ANGELES COUNTY**



\* Persons with an undetermined transmission category are assigned a risk factor using multiple imputation (MI) methods. Other risks include hemophilia or coagulation disorder, transfusion recipient, perinatal exposure and confirmed other risk.  
 \*\* Data are provisional due to reporting delay.

**Fig 12. Persons Reported Living with HIV/AIDS as of 12/31/2012 and Living HIV/AIDS Rates (1) Per 100,000 Population by Service Planning Area (2) (SPA) in Los Angeles County (N = 45,474)**



1. Rates are based on population estimates (PEPS) for 2009.  
 2. Does not include 111 Persons (<1%) whose information on SPA at time of diagnosis was unknown.

## Appendix 1: 2008 Revised Surveillance Case Definitions for Human Immunodeficiency Virus (HIV) Infection Among Adults and Adolescents (aged ≥13 years)

*“These case definitions are intended for public health surveillance only and not as a guide for clinical diagnosis. Public health surveillance data are used primarily for monitoring the HIV epidemic and for planning on a population level, not for making clinical decisions for individual patients. CDC and the Council of State and Territorial Epidemiologists recommend that all states and territories conduct case surveillance of HIV infection and AIDS using the 2008 surveillance case definitions, effective immediately.” ~ MMWR 2008;57 (No. RR-10)*

Stage	Laboratory Evidence*	Clinical Evidence
Stage 1	Laboratory confirmation of HIV infection and CD4+ T-lymphocyte count of ≥500 cells/μl or CD4+ T-lymphocyte percentage of ≥29	None required (but no AIDS-defining condition)
Stage 2	Laboratory confirmation of HIV infection and CD4+ T-lymphocyte count of 200-499 cells/μl or CD4+ T-lymphocyte percentage of 14-28	None required (but no AIDS-defining condition)
Stage 3 (AIDS)	Laboratory confirmation of HIV infection and CD4+ T-lymphocyte count of <200 cells/μl or CD4+ T-lymphocyte percentage of <14 <sup>†</sup>	Or documentation of an AIDS-defining condition (with laboratory confirmation of HIV infection) <sup>†</sup>
Stage unknown <sup>§</sup>	Laboratory confirmation of HIV infection and no information on CD4+ T-lymphocyte count or percentage	And no information on presence of AIDS-defining conditions

\* The CD4+ T-lymphocyte percentage is the percentage of total lymphocytes. If the CD4+ T-lymphocyte count and percentage do not correspond to the same HIV infection stage, select the more severe stage.

<sup>†</sup> Documentation of an AIDS-defining condition (Appendix 2) supersedes a CD4+ T-lymphocyte count of ≥200 cells/μL and a CD4+ T-lymphocyte percentage of total lymphocytes of ≥14. Definitive diagnostic methods for these conditions are available in Appendix C of the 1993 revised HIV classification system and the expanded AIDS case definition (CDC. 1993 Revised classification system for HIV infection and expanded surveillance case definition for AIDS among adolescents and adults. MMWR 1992;41[No. RR-17]) and from the National Notifiable Diseases Surveillance System (available at [http://www.cdc.gov/epo/dphsi/casedef/case\\_definitions.htm](http://www.cdc.gov/epo/dphsi/casedef/case_definitions.htm)).

<sup>§</sup> Although cases with no information on CD4+ T-lymphocyte count or percentage or on the presence of AIDS-defining conditions can be classified as stage unknown, every effort should be made to report CD4+ T-lymphocyte counts or percentages and the presence of AIDS-defining conditions at the time of diagnosis. Additional CD4+ T-lymphocyte counts or percentages and any identified AIDS-defining conditions can be reported as recommended. (Council of State and Territorial Epidemiologists. Laboratory reporting of clinical test results indicative of HIV infection: new standards for a new era of surveillance and prevention [Position Statement 04-ID-07]; 2004. Available at <http://www.cste.org/ps/2004pdf/04-ID-07-final.pdf>.)

### Criteria for HIV infection for persons aged ≥13 years:

#### Laboratory Criteria:

Positive result from an HIV antibody screening test (e.g., reactive enzyme immunoassay [EIA]\*) confirmed by a positive result from a supplemental HIV antibody test (e.g., Western blot or indirect immunofluorescence assay test) OR positive result or report of a detectable quantity (i.e., within the established limits of the laboratory test) from any of the following HIV virologic (i.e., non-antibody) tests<sup>†</sup>:

- HIV nucleic acid (DNA or RNA) detection test (e.g., polymerase chain reaction [PCR])
- HIV p24 antigen test, including neutralization assay
- HIV isolation (viral culture)

#### Other Criterion (for Cases that Do Not Meet Laboratory Criteria)

HIV infection diagnosed by a physician or qualified medical-care provider<sup>§</sup> based on the laboratory criteria and documented in a medical record.<sup>¶</sup> Oral reports of prior laboratory test results are not acceptable.

\* Rapid tests are EIAs that do not have to be repeated but require a confirmatory test if reactive. Most conventional EIAs require a repeatedly reactive EIA that is confirmed by a positive result with a supplemental test for HIV antibody. Standard laboratory testing procedures should always be followed.

† For HIV screening, HIV virologic (non-antibody) tests should not be used in lieu of approved HIV antibody screening tests. A negative result (i.e., undetectable or nonreactive) from an HIV virologic test (e.g., viral RNA nucleic acid test) does not rule out the diagnosis of HIV infection.

§ Qualified medical-care providers might differ by jurisdiction and might include physicians, nurse practitioners, physician assistants, or nurse midwives.

¶ An original or copy of the laboratory report is preferred; however, in the rare instance the laboratory report is not available, a description of the laboratory report results by a physician or qualified medical-care provider documented in the medical record is acceptable for surveillance purposes. Every effort should be made to obtain a copy of the laboratory report for documentation in the medical record.

For the criteria for HIV infection among children aged <13 years, see “Revised Surveillance Case Definitions for HIV Infection Among Adults, Adolescents, and Children Aged <18 Months and for HIV Infection and AIDS Among Children Aged 18 Months to <13 Years --- United States, 2008”- MMWR 2008;57 (No. RR-10) <http://www.cdc.gov/mmwr/preview/mmwrhtml/rr5710a1.htm>

## Appendix 2: AIDS-Defining Conditions

- Bacterial infections, multiple or recurrent\*
- Candidiasis of bronchi, trachea, or lungs
- Candidiasis of esophagus<sup>†</sup>
- Cervical cancer, invasive<sup>§</sup>
- Coccidioidomycosis, disseminated or extrapulmonary
- Cryptococcosis, extrapulmonary
- Cryptosporidiosis, chronic intestinal (>1 month’s duration)
- Cytomegalovirus disease (other than liver, spleen, or nodes), onset at age >1 month
- Cytomegalovirus retinitis (with loss of vision)<sup>†</sup>
- Encephalopathy, HIV related
- Herpes simplex: chronic ulcers (>1 month’s duration) or bronchitis, pneumonitis, or esophagitis (onset at age >1 month)
- Histoplasmosis, disseminated or extrapulmonary
- Isosporiasis, chronic intestinal (>1 month’s duration)
- Kaposi’s sarcoma<sup>†</sup>
- Lymphoid interstitial pneumonia or pulmonary lymphoid hyperplasia complex\*<sup>†</sup>
- Lymphoma, Burkitt’s (or equivalent term)
- Lymphoma, immunoblastic (or equivalent term)
- Lymphoma, primary, of brain
- *Mycobacterium avium* complex or *Mycobacterium kansasii*, disseminated or extrapulmonary<sup>†</sup>
- *Mycobacterium tuberculosis* of any site, pulmonary,<sup>†§</sup> disseminated,<sup>†</sup> or extrapulmonary<sup>†</sup>
- *Mycobacterium*, other species or unidentified species, disseminated<sup>†</sup> or extrapulmonary<sup>†</sup>
- *Pneumocystis jirovecii* pneumonia<sup>†</sup>
- Pneumonia, recurrent<sup>†§</sup>
- Progressive multifocal leukoencephalopathy
- *Salmonella* septicemia, recurrent
- Toxoplasmosis of brain, onset at age >1 month<sup>†</sup>
- Wasting syndrome attributed to HIV

\* Only among children aged <13 years. (CDC. 1994 Revised classification system for human immunodeficiency virus infection in children less than 13 years of age. MMWR 1994;43[No. RR-12].)

† Condition that might be diagnosed presumptively.

§ Only among adults and adolescents aged ≥13 years. (CDC. 1993 Revised classification system for HIV infection and expanded surveillance case definition for AIDS among adolescents and adults. MMWR 1992;41[No. RR-17].)

## Appendix 3: Technical Notes

### Geographical Information System (GIS)

Residence at earliest HIV or AIDS diagnosis is used to determine the geographical information when the data are presented by the year of diagnosis. In the tables or maps for persons living with a diagnosis of HIV infection (including AIDS), the residential information at time of AIDS diagnosis is used to determine the associated geographical boundary. For non-AIDS HIV cases or AIDS cases for whom the specific residential information at time of AIDS diagnosis is not available, the residence at time of HIV diagnosis or the most recently reported residential information is used provided that the address is valid and within the L.A. County jurisdiction.

The presentation of data at ZIP-code level is based on the map definition released in 2011. The definition for health districts and Service Planning Areas (SPA) are based on new boundary files released in 2011.

Caution should be exercised when interpreting zip code-level and small city/area rates and case counts because these values are inclusive of any correctional populations and may be artificially inflated when an institution is housed in the zip code or area.

### Race and ethnicity

Mandated collection of race and ethnicity data was implemented in January 1, 2003 as required by the OMB Statistical Policy Directive 15. A minimum of 5 race categories should be collected including American Indian or Alaska Native, Asian, black or African American, Native Hawaiian or Other Pacific Islander, and white. Additionally, systems must be able to retain information when multiple racial categories are reported. Two ethnicity categories should be collected regardless of race: Hispanic and non-Hispanic.

Race and Ethnicity in this report are grouped using the following criteria exclusively: A person is considered to be 'Hispanic' if so indicated in race or ethnicity field, regardless of any other race information found for the person. When not indicated as 'Hispanic', a person is considered to be 'American Indian/Alaskan Native' if the race field contains AI/AN information, regardless of any other race information found for this person. A person is considered to be 'Asian/Pacific Islander' when either indicated as Asian or Native Hawaiian/Pacific Islander, or both in the race fields. Aside from the above criteria, a person is categorized as 'Multi-race' when two or more races are indicated in the above race fields. All other persons with a single race indicated are placed in the corresponding race category. Persons with multiple racial categories or unknown race are included in the total

numbers in Table 2-3, Table 6, Table 11-20, and Table 25-26.

### Rates

For Figure 4-5, Figure 8-9, Table 6-8, Table 11-14, Table 16, Table 18-20, and Table 25-26. Rates are calculated using Population Estimation and Projection System (PEPS) for 1992-2009 that were prepared by Walter R. McDonald & Associates, Inc. (WRMA) for Urban Research, LA County ISD. Conforming to standard criterion used by the National Center for Health Statistics, rates are considered unreliable when the relative standard error of the rate is greater than or equal to 30%--that is, when rates are based on less than or equal to 12 observations.

### Reporting Delay

Reporting delay is defined as the time interval between diagnosis or death and the reporting of diagnosis or death to Los Angeles County HIV Epidemiology, DHSP. The median reporting delay for all HIV/AIDS cases reported in 2011 was 6 months (range 0 to 394 months). The impact of report delay must be considered when evaluating trends in case numbers and rates over time (Figure 1-10, Tables 1, Table 5-8, and Table 19-25).

### Surveillance of HIV Infection in Los Angeles County

Surveillance of HIV infections (including AIDS) in Los Angeles County (LAC) is conducted through active and passive surveillance to identify and collect information on cases of HIV and AIDS diagnosed at hospitals, clinics, private physician offices, laboratories, community-based organizations (CBOs), and hospices. Active surveillance requires HIV Epidemiology, DHSP staff to routinely contact and visit sites to facilitate the completion of HIV/AIDS case reports. Mandated reporters participating in passive surveillance submit case reports to HEP without any contact from surveillance staff. In LAC, about 75%-80% of persons reported with a diagnosis of HIV infection are collected through active surveillance activities.

Data on diagnoses of HIV infection should be interpreted with caution. HIV surveillance reports may not be representative of all persons infected with HIV because not all infected persons have been tested. Furthermore, the results of anonymous tests are not required to report in California. Therefore, reports of confidential test results may not represent all persons with HIV infection. Many factors, including the extent to which testing is routinely offered to specific groups and the availability of, and access to, medical care and testing services, may influence testing patterns. These data only provide a minimum estimate of persons known to be HIV infected.

## **Transmission Categories**

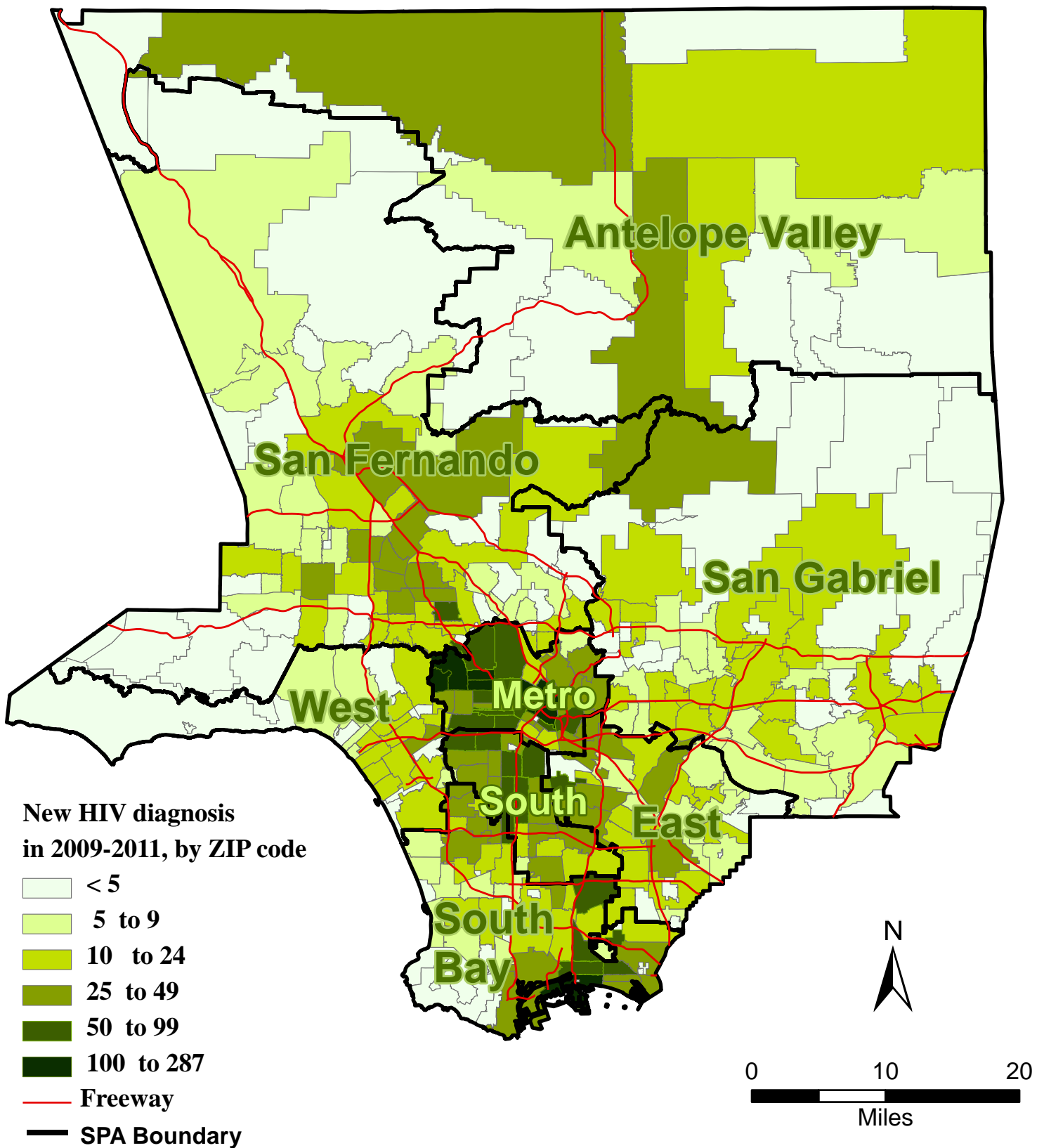
Transmission categories are assigned in a hierarchical fashion (listed from highest to lowest in the column headed "Transmission Category"). Persons who have been identified with two or more transmission categories are assigned to the category listed highest in the hierarchy. For example, a man who reports sexual contact with another man and heterosexual contact with an HIV-positive woman would be classified as "male-male sexual contact." The only exception to this rule includes those men who report both categories for sexual contact with another man and injection-drug use. A separate transmission category is created for these cases.

The heterosexual contact transmission category is limited to persons who had heterosexual contacts with an HIV-infected or a sexual partner with an increased risk for HIV. Transfusion or hemophilia transmission category is limited to persons who received blood transfusion no later than 1985 or persons who had been investigated and confirmed as having received transfusion of contaminated blood after 1985.

Cases in persons with no reported exposure to HIV through any of the routes listed in the hierarchy of transmission categories are classified as "undetermined" transmission category. These cases include some persons still under investigation; cases in persons whose exposure history is missing because they died; cases that have been followed up but declined to be interviewed, or were lost to follow-up; and cases in persons who were interviewed or for whom other follow-up information was available but for whom no mode of exposure was identified. If the investigation identifies a mode of exposure, the case is reclassified into the corresponding transmission category.

Because a substantial proportion of cases of HIV infection and AIDS are reported without an identified risk factor, we use the CDC-recommended multiple imputation methods to assign a risk factor for these cases. Multiple imputation is a statistical approach in which each missing risk factor is replaced with a set of plausible values that represent the uncertainty about the true, but missing value. The plausible values are analyzed by using standard procedures, and the results from these analyses are then combined to produce the final results. In this report, multiple imputation has been used in tables showing estimated distribution by HIV transmission category for diagnoses among adults and adolescents, but not in tables concerning diagnoses among children (because the number of cases in children is small, missing risk factors were not imputed).

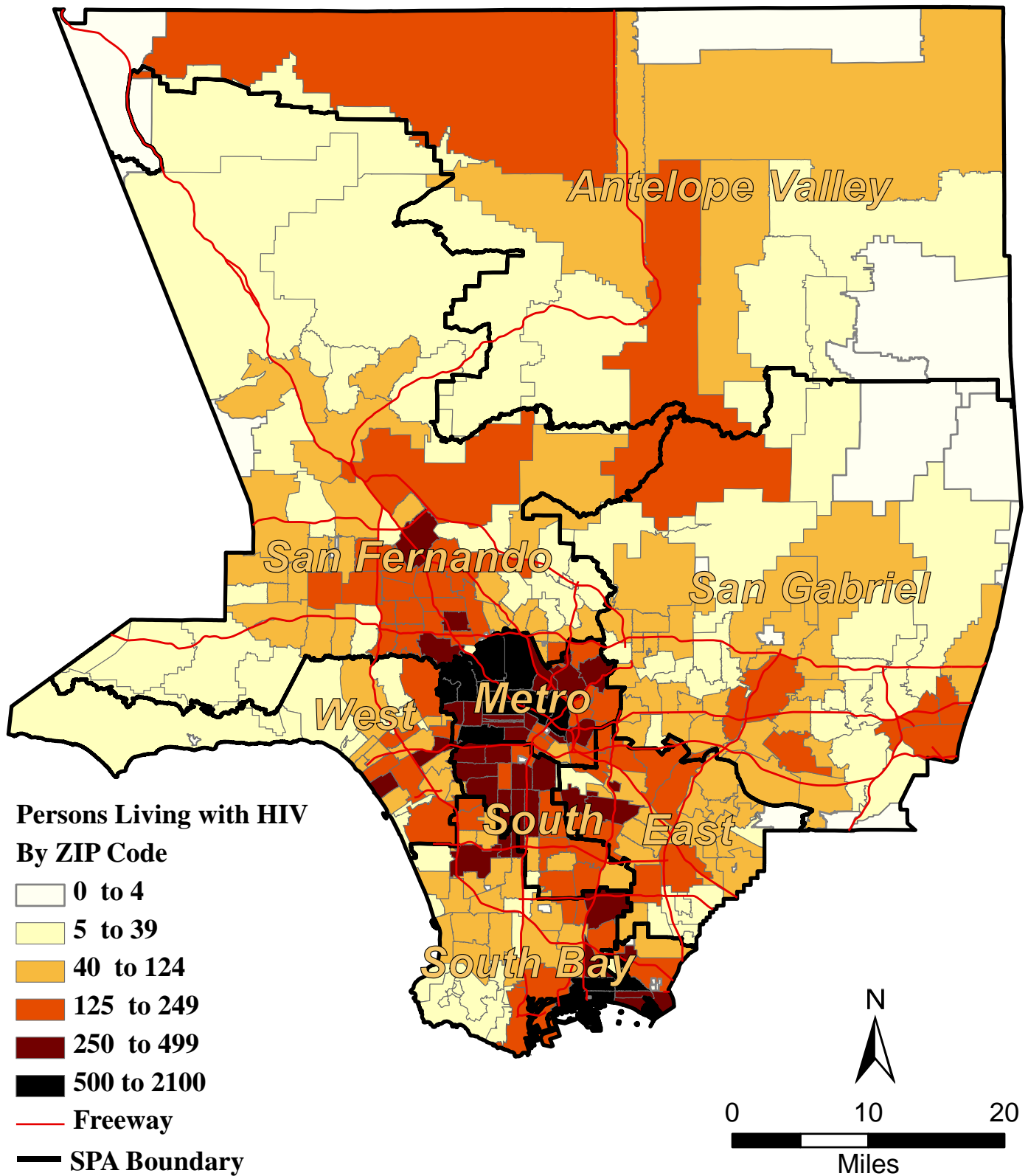
**Fig 13. New HIV Diagnoses in 2009-2011 by ZIP Code and Service Planning Area (SPA) in Los Angeles County (N = 6,110)**



Data are provisional due to reporting delay. Zip code information is based on the residence at the time of diagnosis or the most recently reported residential information.



**Fig 14. Persons Living with a Diagnosis of HIV Infection as of 12/31/2012 by ZIP Code and Service Planning Area (SPA) in Los Angeles County (N=45,474)**



Data are provisional due to reporting delay. Zip code information is based on the residence at the time of diagnosis or the most recently reported residential information.

