

# COVID-19 & Tuberculosis

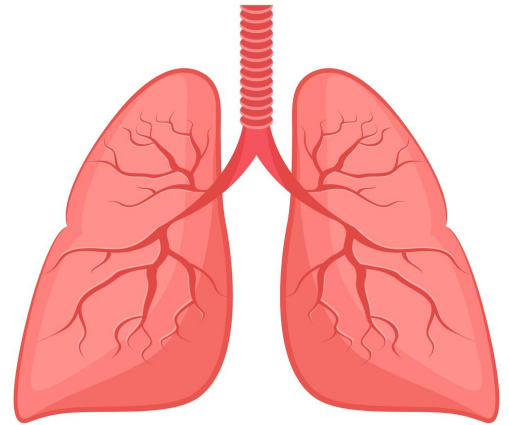
The coronavirus (or COVID-19) pandemic has made the focus on tuberculosis (or TB) prevention/treatment more necessary and urgent in LA County.

## What is COVID-19?

- COVID-19 is a respiratory illness caused by a virus that can spread from person-to-person.

## What is TB?

- TB is a serious & sometimes deadly illness (caused by bacteria) that usually attacks the lungs, but can also affect other parts of the body.
- **There are two types of TB — latent TB infection & active TB disease.**
  - If you have latent TB infection, you can't spread it to others.
  - If left untreated, it can develop into TB disease, which can be spread to others.



### Additional COVID-19 Symptoms

- Symptoms may develop **2-14 days after exposure**
- Other symptoms:
  - new loss of taste or smell
  - sore throat & congestion/runny nose
  - nausea or vomiting
  - muscle or body ache
  - diarrhea

### Shared Symptoms

- **BOTH COVID-19 & TB may cause:**
  - cough
  - shortness of breath
  - fever
  - chills
- **Spread when an infected person sneezes, coughs, etc.**

### Additional TB Disease Symptoms

- Symptoms may develop **after weeks to years if not treated for latent TB infection**
- Other symptoms:
  - night sweats and persistent chest pain
  - coughing up blood or phlegm
  - weight loss or fatigue

## Who is at a Higher Risk for TB?

- People who have **lived in/visited another country** other than the US, Canada, Australia, New Zealand, or Western/Northern Europe
- Those who have a **weakened immune system** (ex. HIV, organ transplant, cancer etc.)
- **Close contact** to someone who has TB disease
- History of **homelessness/incarceration**

## How to Protect You and Your Family

- If you're at a **high risk**, it's important to know your status & get treated if you have either latent or active TB
  - Getting **sick with COVID-19 while you have TB** can lead to more severe complications
  - **Strictly follow your TB treatment** as directed by your healthcare provider
- Practice social distancing & wear face coverings
- Wash hands frequently & disinfect surfaces
- Avoid touching the face with unwashed hands
- **Call your healthcare provider** if you have any symptoms noted above

## Where to Get Tested/More Information

- **COVID-19 Testing:** Call 211 or Visit <https://lacovidprod.service-now.com/rrs>
  - **More info on COVID-19:** <http://www.ph.lacounty.gov/media/Coronavirus/>
- **TB Testing:** Visit <http://ph.lacounty.gov/tb/docs/TBClinics2017.pdf>
  - **More info on TB:** <http://ph.lacounty.gov/tb/factsheets.htm>

