



Coalition to End TB in Los Angeles County

Thursday, August 31, 2017
Hollywood Presbyterian Hospital





Vision Statement: *Promoting a tuberculosis free Los Angeles County where strong community partnerships foster education and equitable access to screening and treatment.*

Agenda

- Welcome & Introductions
- TB story
- LTBI Screening and Treatment w/ Dr. Tyler Evans
- Data Update: HIV/TB in LA County w/ Ramon Guevara
- Building our Bylaws
- World TB Day 2018
- Updates

TB Story





Icebreaker

- Name
- Organization
- Fun awareness activity



**Share your name,
organization, and a fun fact**



Tyler B. Evans, MD, MPH, AAHIVS, DTMH
National Director of Infectious Disease
AIDS Healthcare Foundation,
Community Healthcare Network



LTBI Screening and Treatment

Tyler B Evans, MD, MS, MPH, AAHIVS,
DTM&H

AIDS HealthCare Foundation



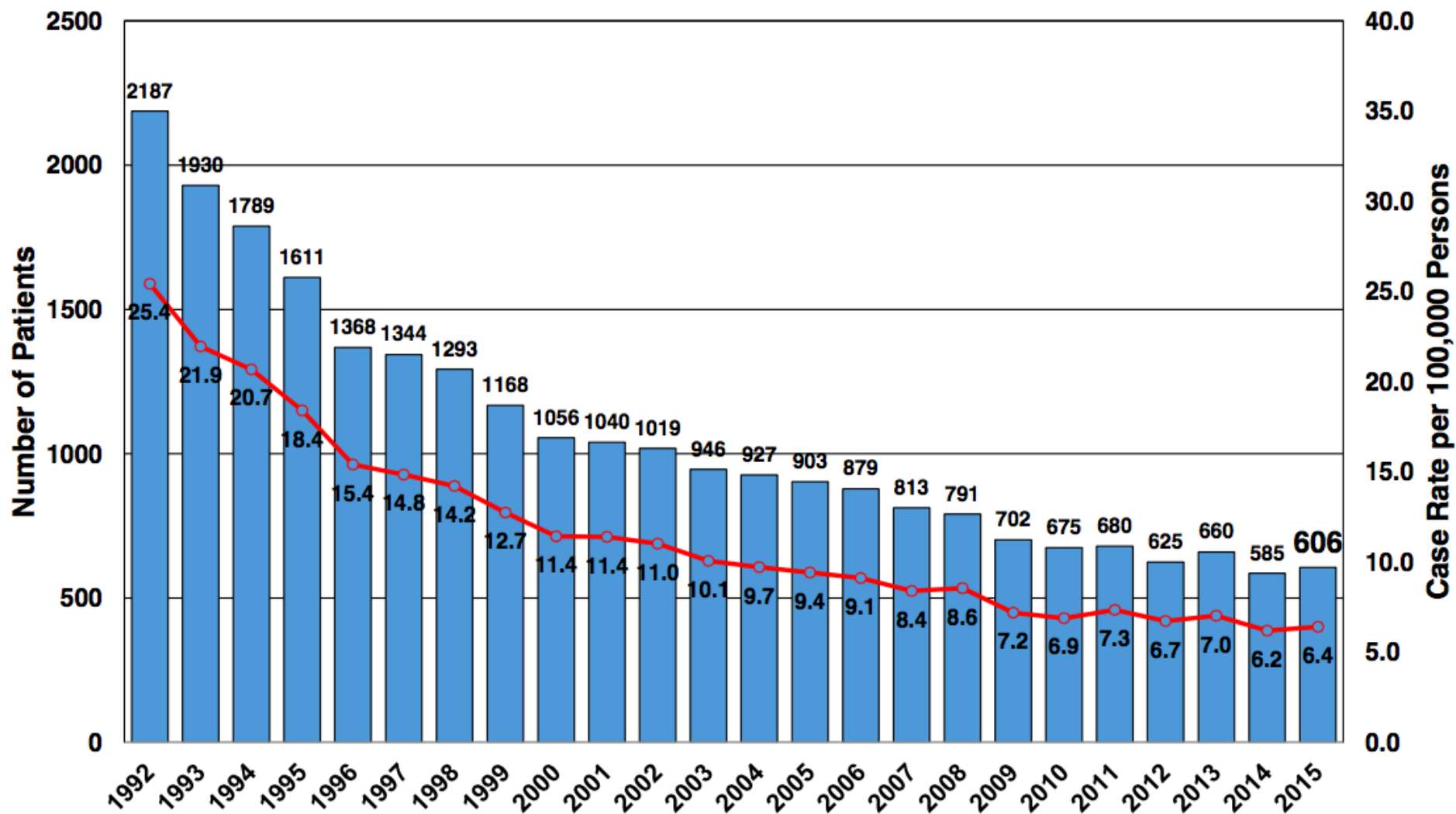


Epidemiology in LAC...



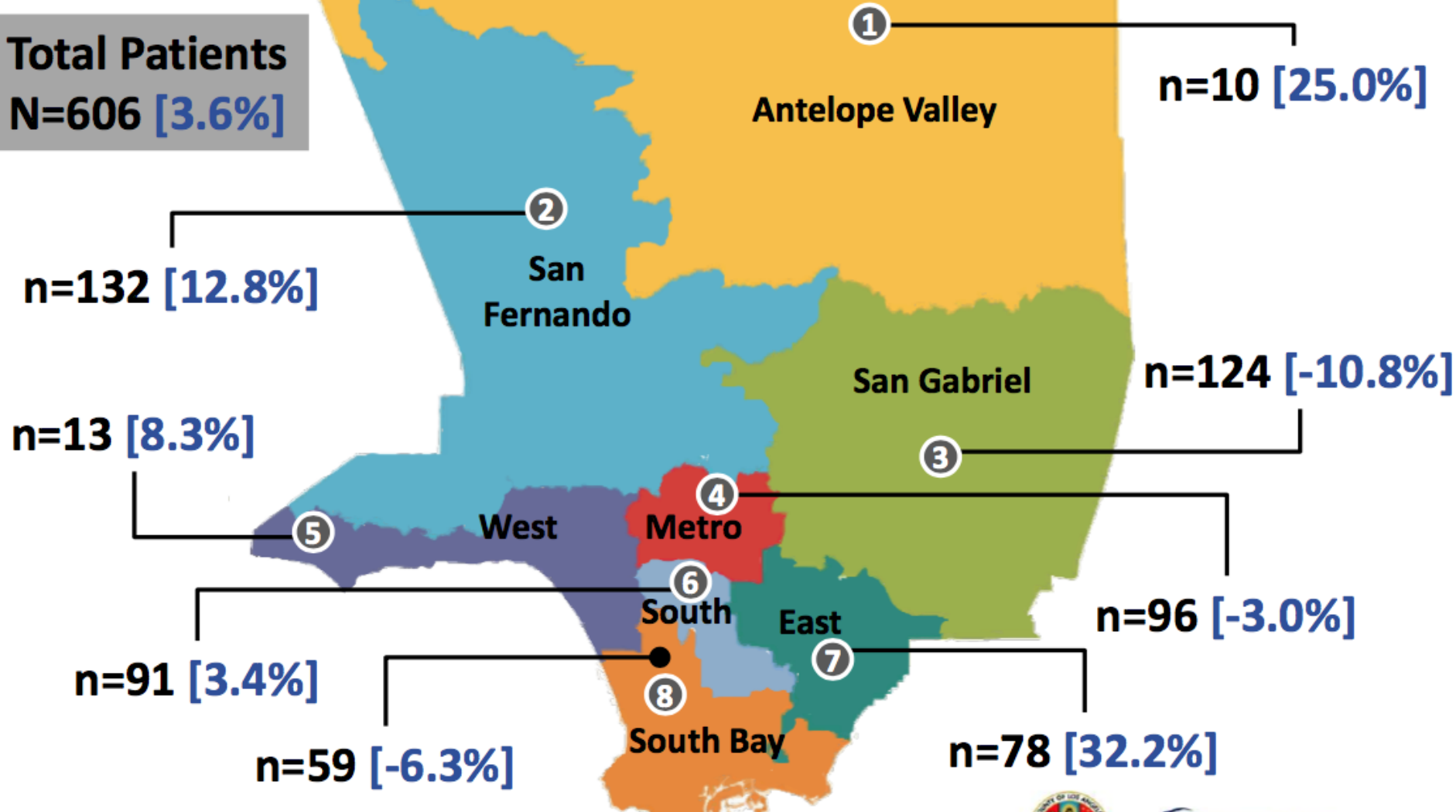


TB Cases in LA County, 1992-2015





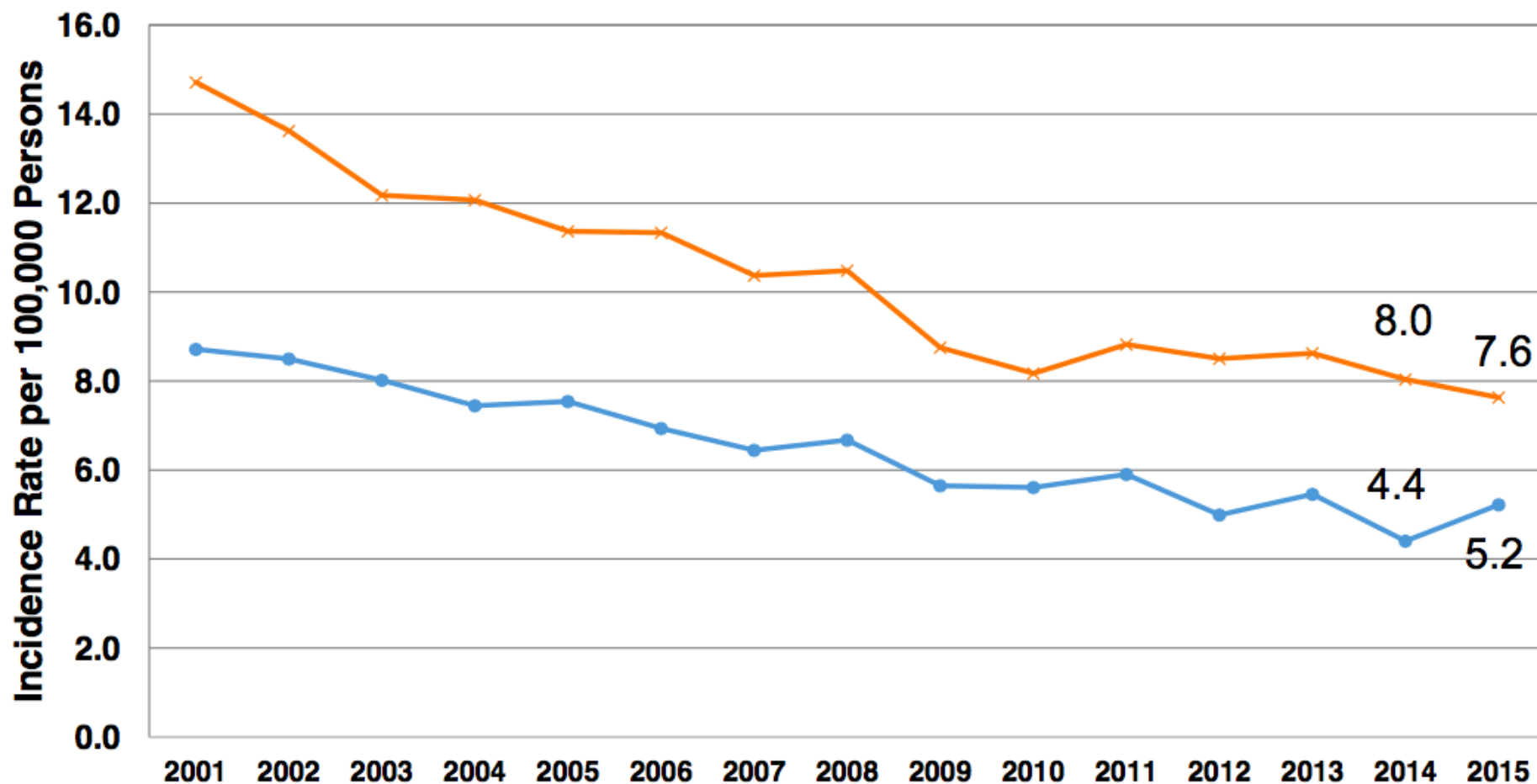
Total Patients
N=606 [3.6%]

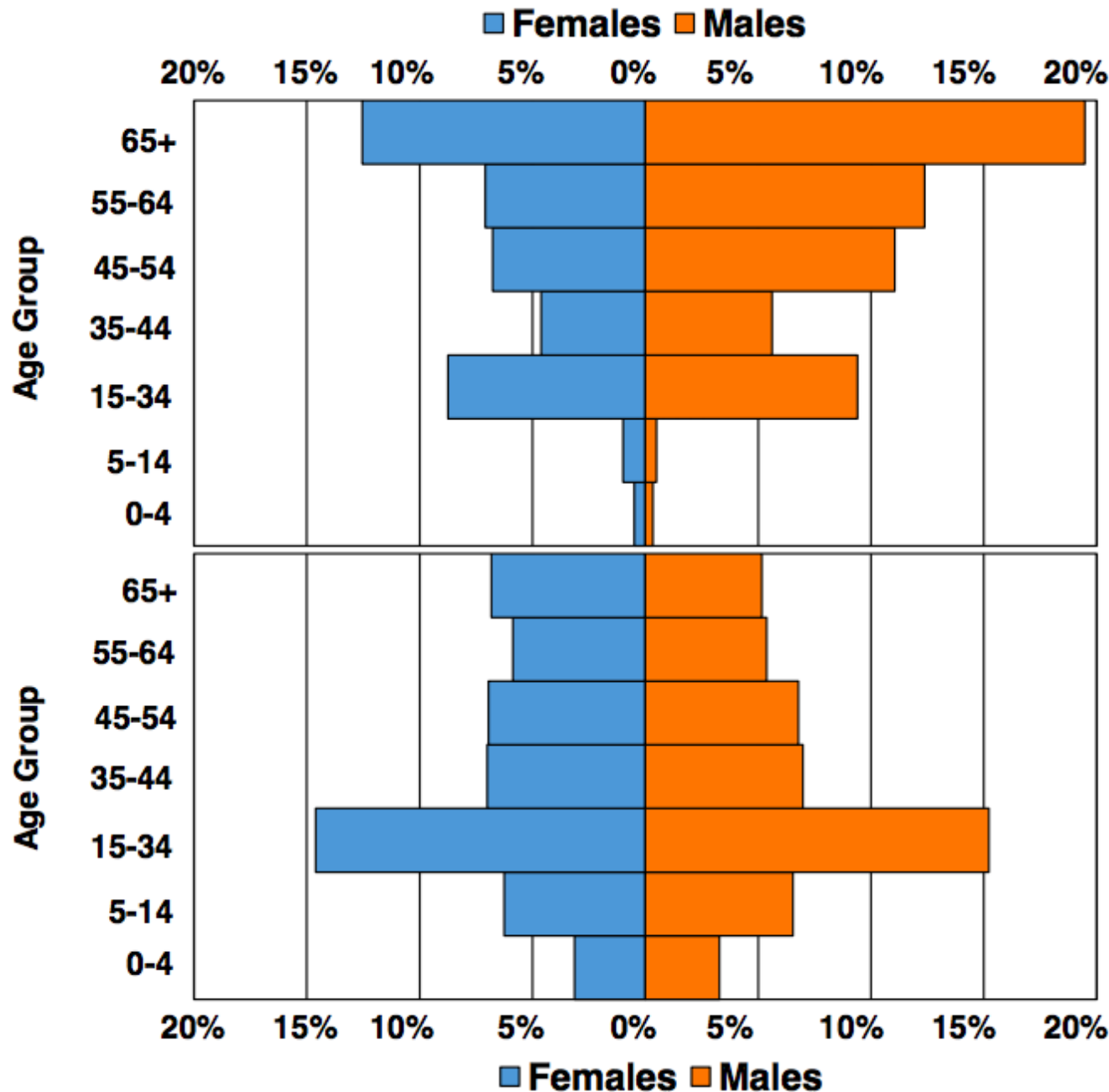




TB Case Rates by Sex: LA County 2001-2015

—●— Female —×— Male





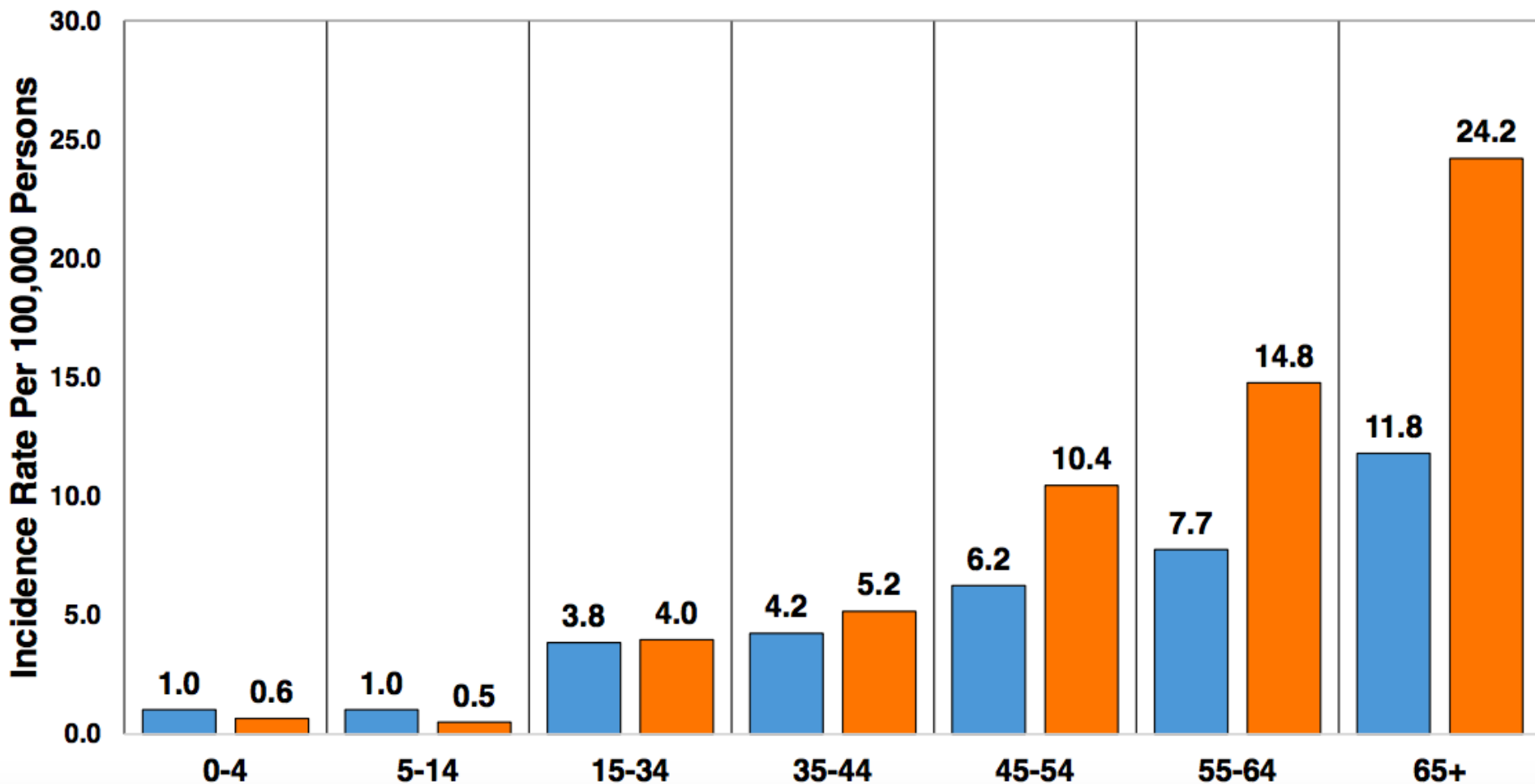
LA County TB patients, 2015

LA County population (2014)



TB Case Rates by Sex and Age: LA County 2015

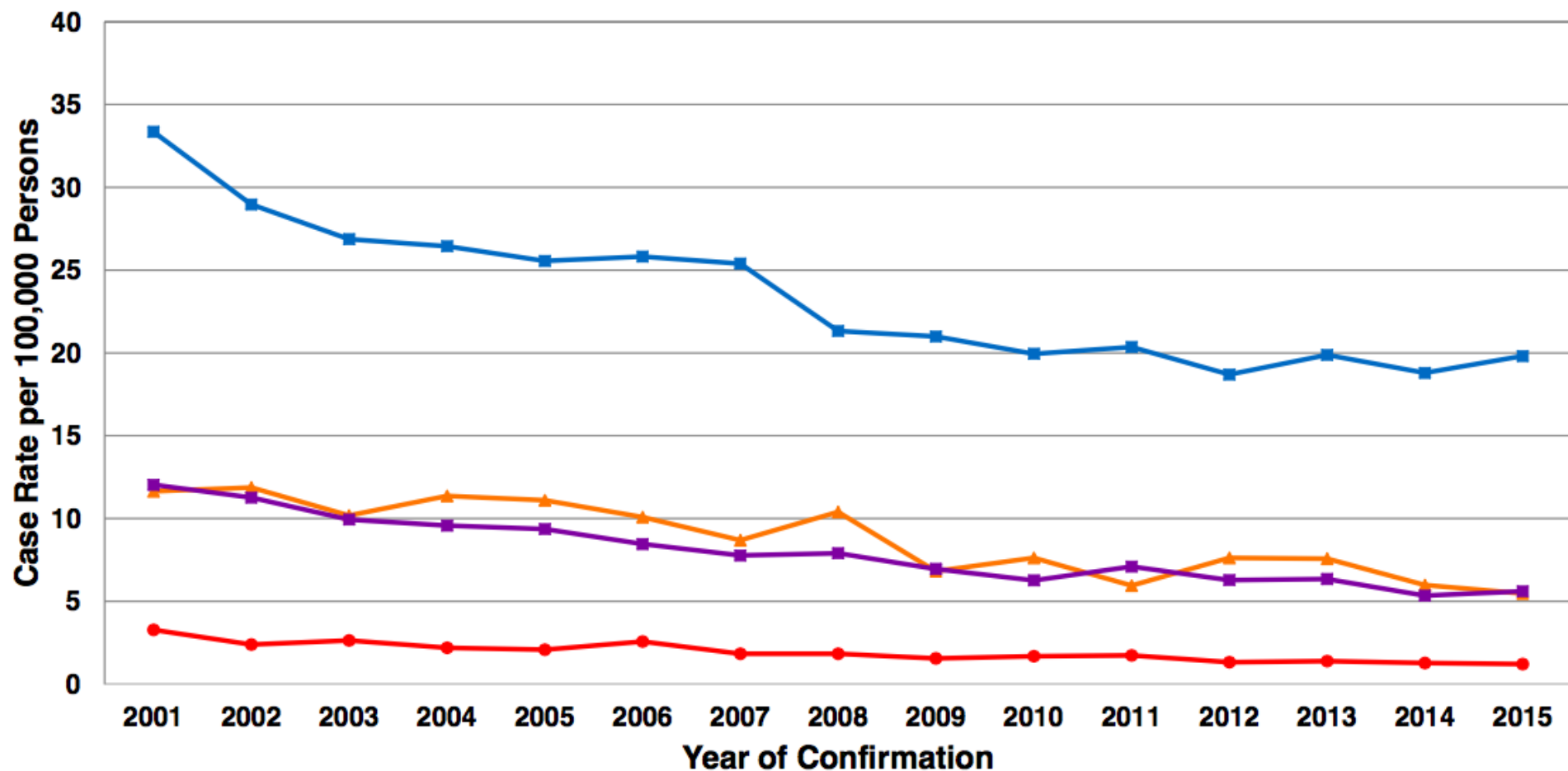
■ Female ■ Male



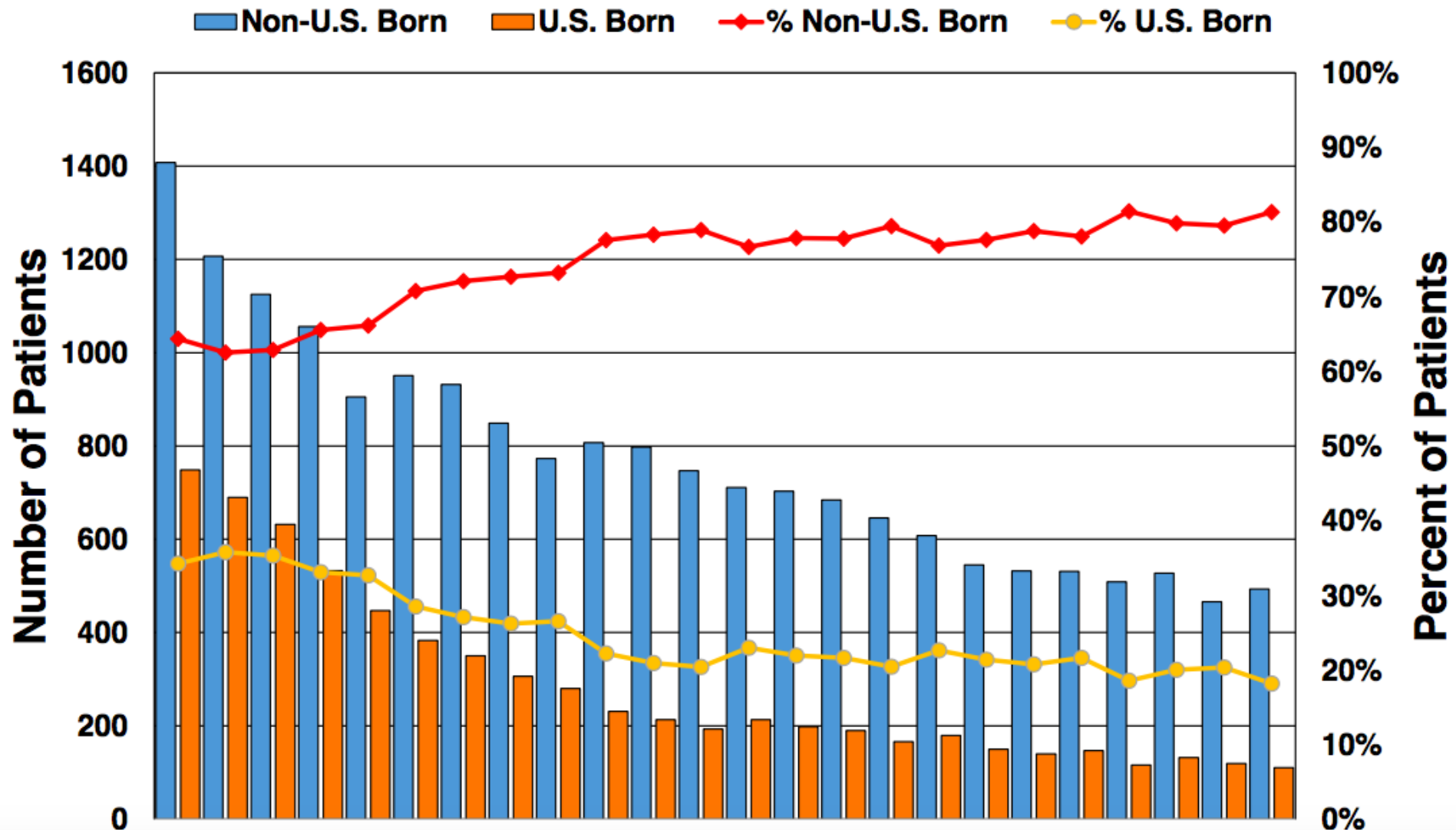


TB Rates by Race/Ethnicity: LA County 2001-2015

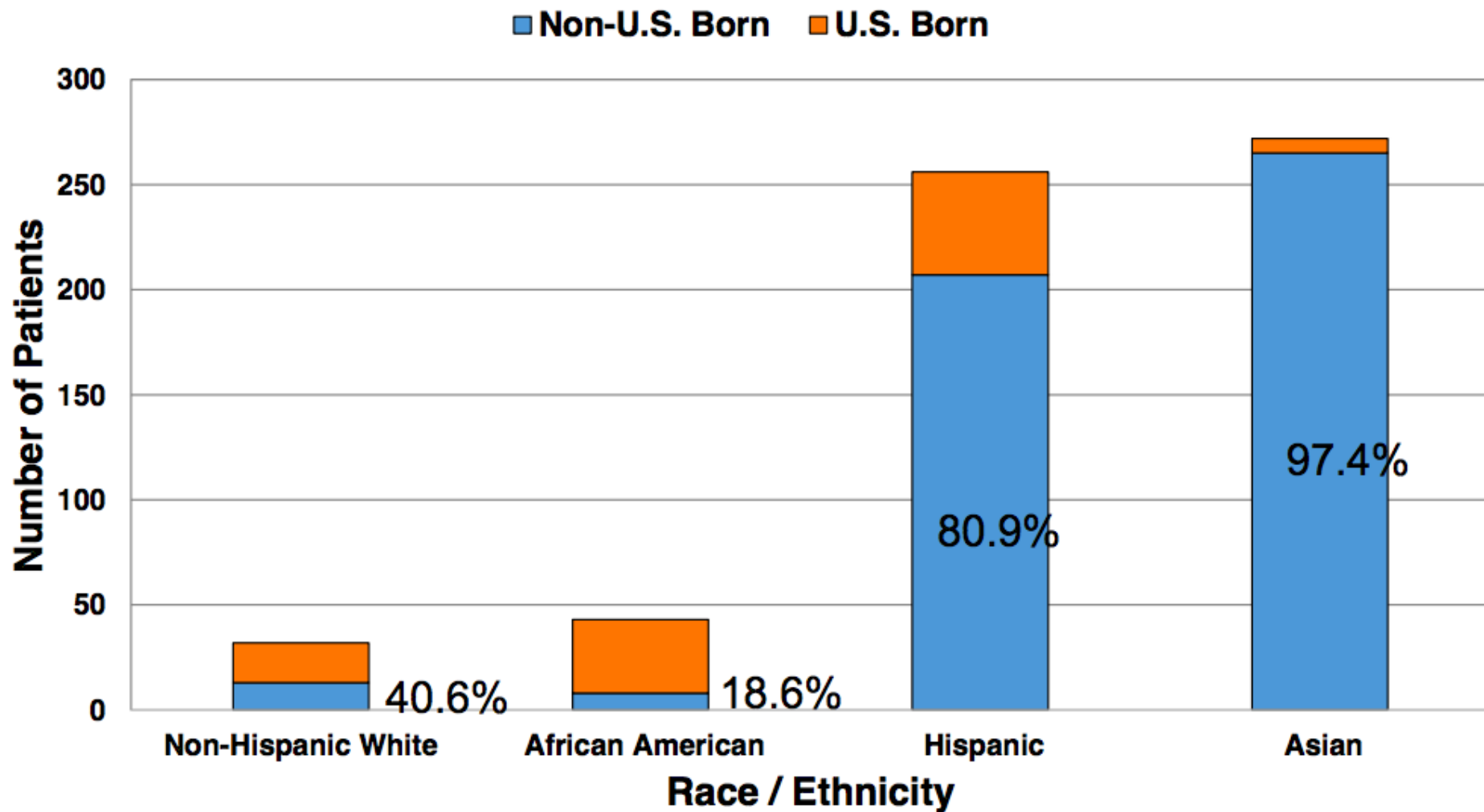
● Non-Hispanic White ▲ African American ■ Hispanic ■ Asian**



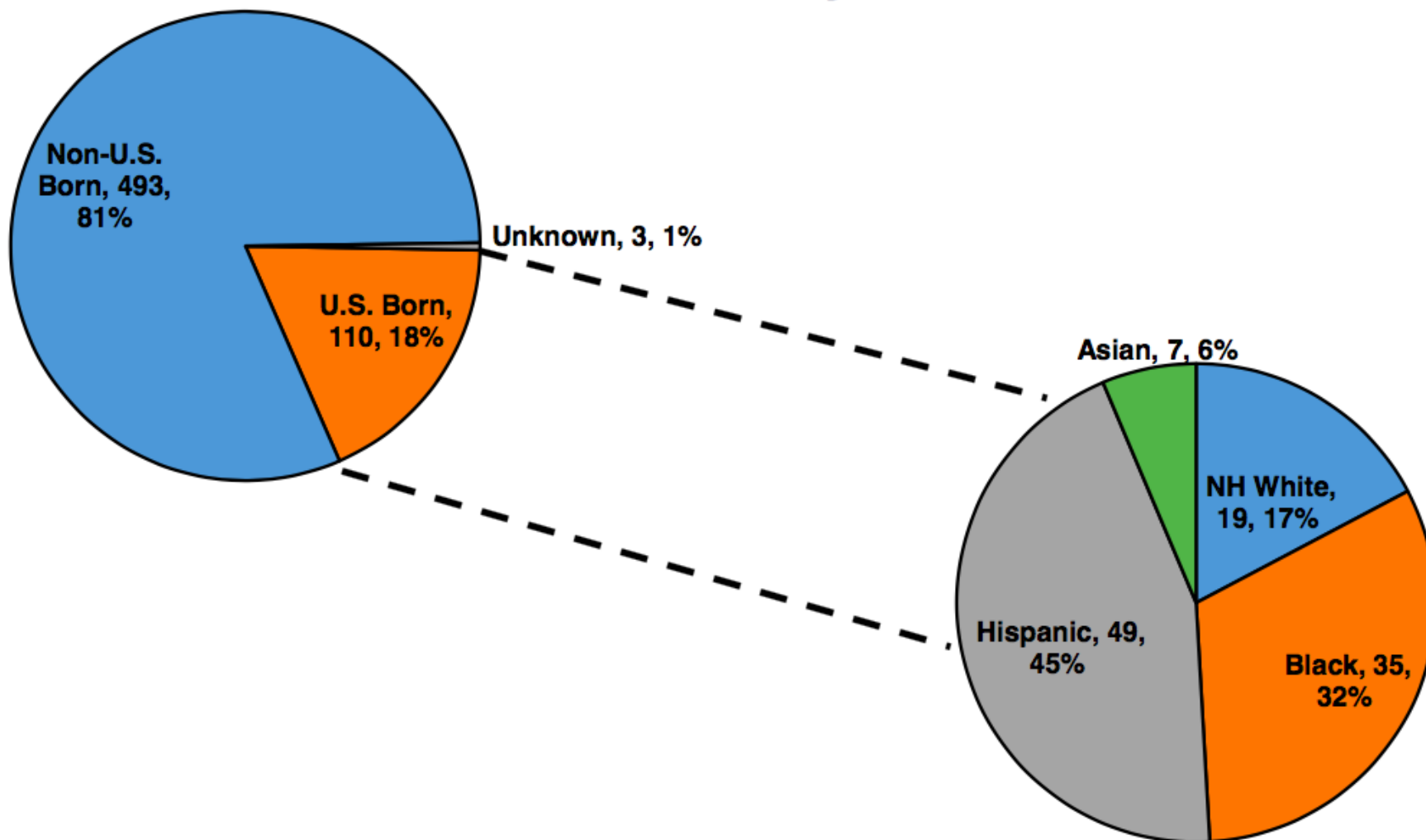
U.S. and Non-U.S. Born TB Patients: LA County 1992-2015



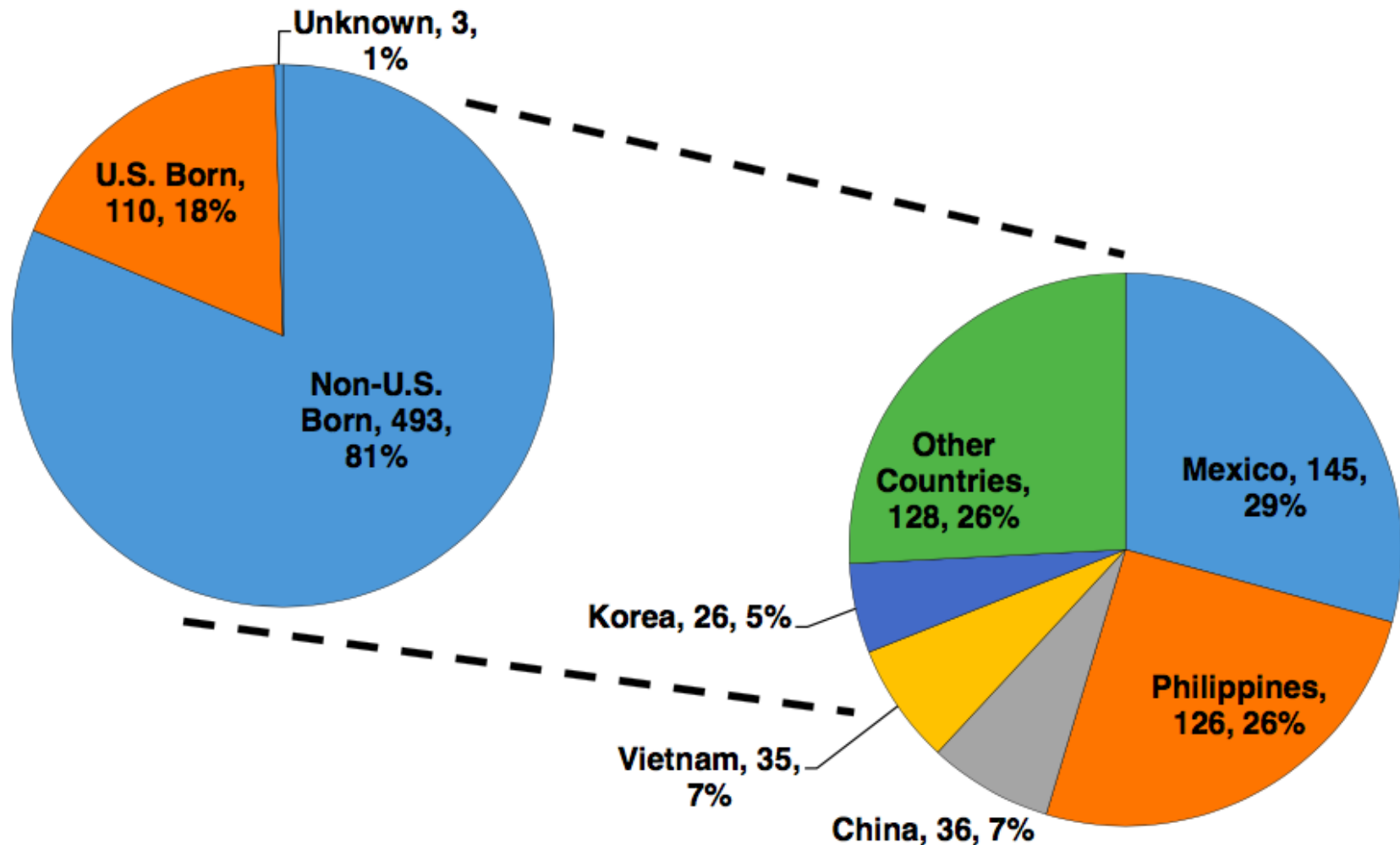
U.S. and Non-U.S. Born TB Patients by Race/Ethnicity: LA County 2015



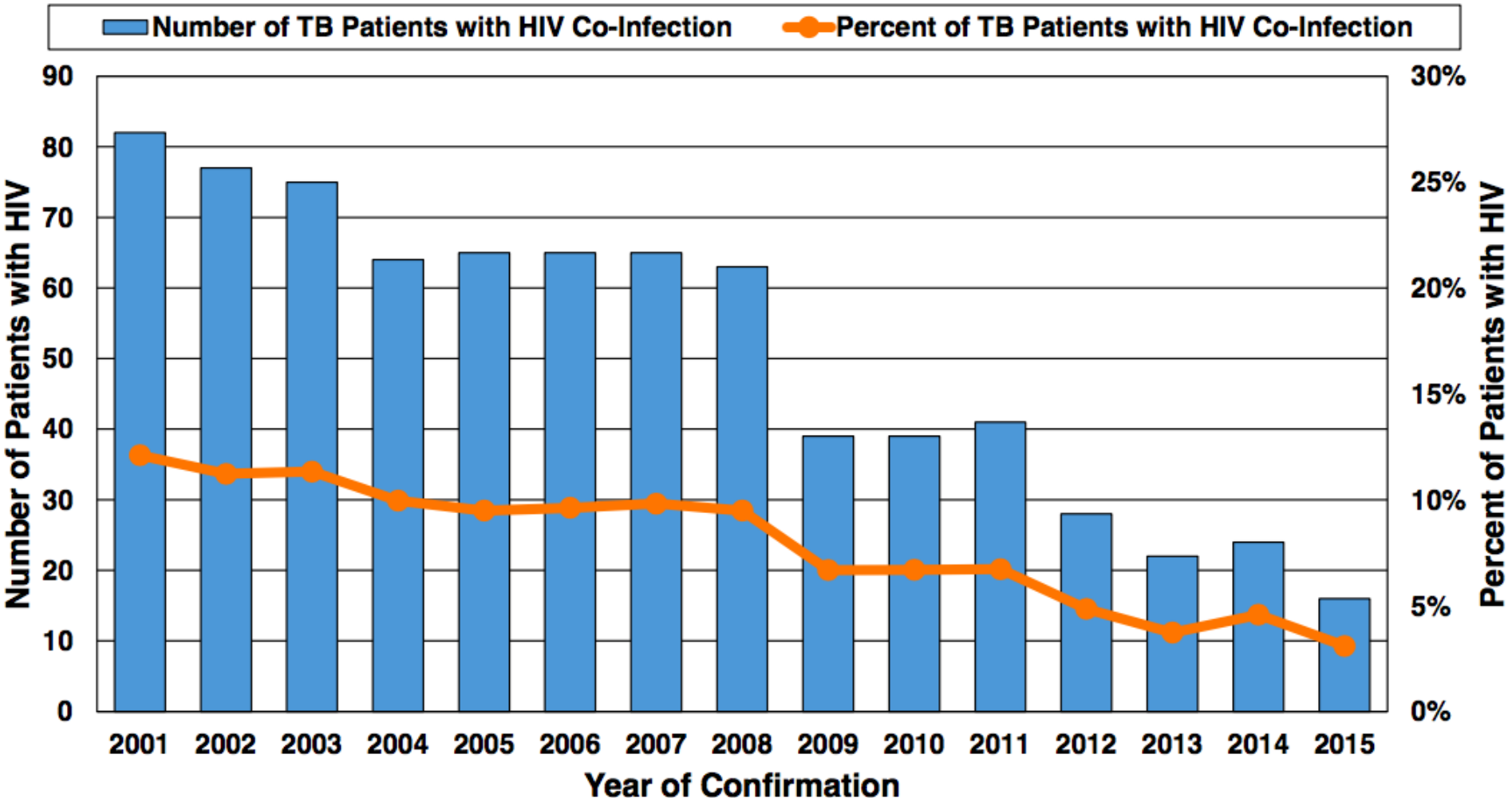
TB Patients by Nativity and Race/Ethnicity: LA County 2015



TB Patients by Nativity and Country of Birth: LA County 2015

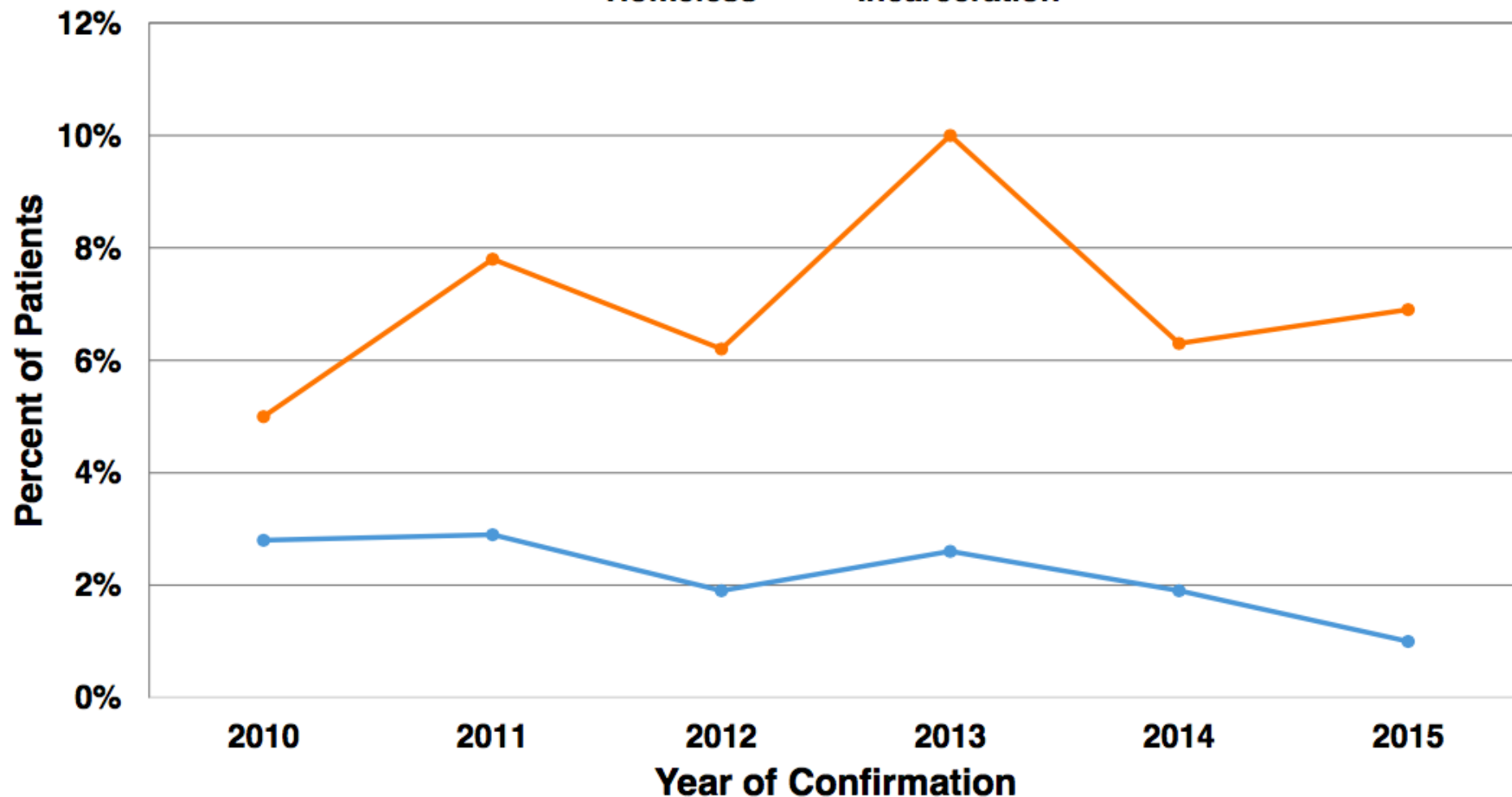


Tuberculosis Patients with known HIV Co-Infection: LA County 2001-2015



TB Patients by Social Risk Factors: LA County 2010-2015

—●— Homeless —●— Incarceration





LTBI Screening and Treatment





LTBI Background...

- 13.6 million in US (2016)
- The treatment of LTBI in PLWHA reduces active TB disease by approximately 62% and reduces mortality by 26%
- A number of barriers exist that affect:
 - initiation (as low as 26.0%)
 - 67% in PLWHA
 - completion (as low as 39.0%)
 - 55% in PLWHA
- CDC now recommends structured supervisory programs



Objectives...

- Improve LTBI screening among the appropriate subpopulations of PLWHA using IGRA
- Improve the initiation rates (IR) of those PLWHA where LTBI treatment would be indicated
- Improve the completion rates (CR) of LTBI treatment among PLWHA
- Compare these structured completion rates of LTBI treatment with the current standard of care.



LTBI Screening...

- IGRA only
 - HIV+
 - Chronic hepatitis
 - Foreign born
 - Household contacts of foreign born
 - High risk residential facilities
- Annual?



Recruitment Process...

- Designated RN/LPN (TB patient navigator) to review all +PPD /IGRA and determine if previous tx.
- Run monthly data reports on unscreened patients and provide HCCs with those reports for recruitment
- Tool to increase compliance and improve our screening yield
- If no previous tx on record, patient is contacted and asked to come in for a consultation.
- Create a registry and review with lead TB clinicians for appropriateness of tx
- 1-2 designated centers per city



Treatment Process...

- 4 months of rifampicin or rifabutin
- Complex demographics (see below) referred to DoH for weekly DoT with INH and rifapentine (3-HP):
 - Homeless
 - High rate of incarceration
 - Active substance abuse
 - Decompensated mental health
 - High no show rate



Clinical Flow...

- Nursing visit: every 2 weeks (8 total)
 - Assess adherence
 - Document ADR, if relevant
 - Document any TB-related (including extrapulmonary) symptoms
- Clinician visit: every 8 weeks (2 total)
- Labs:
 - Risk Factors
 - Baseline (BL): CBC, SMA (with AST, ALT), Hepatitis panel, HIV
 - Frequency:
 - » BL abnormal: q4 weeks
 - » BL WNL: q12 weeks



Tyler.evans@aidshealth.org



April King-Todd, B.S.N., M.P.H.

Data Update: HIV/TB in LA County



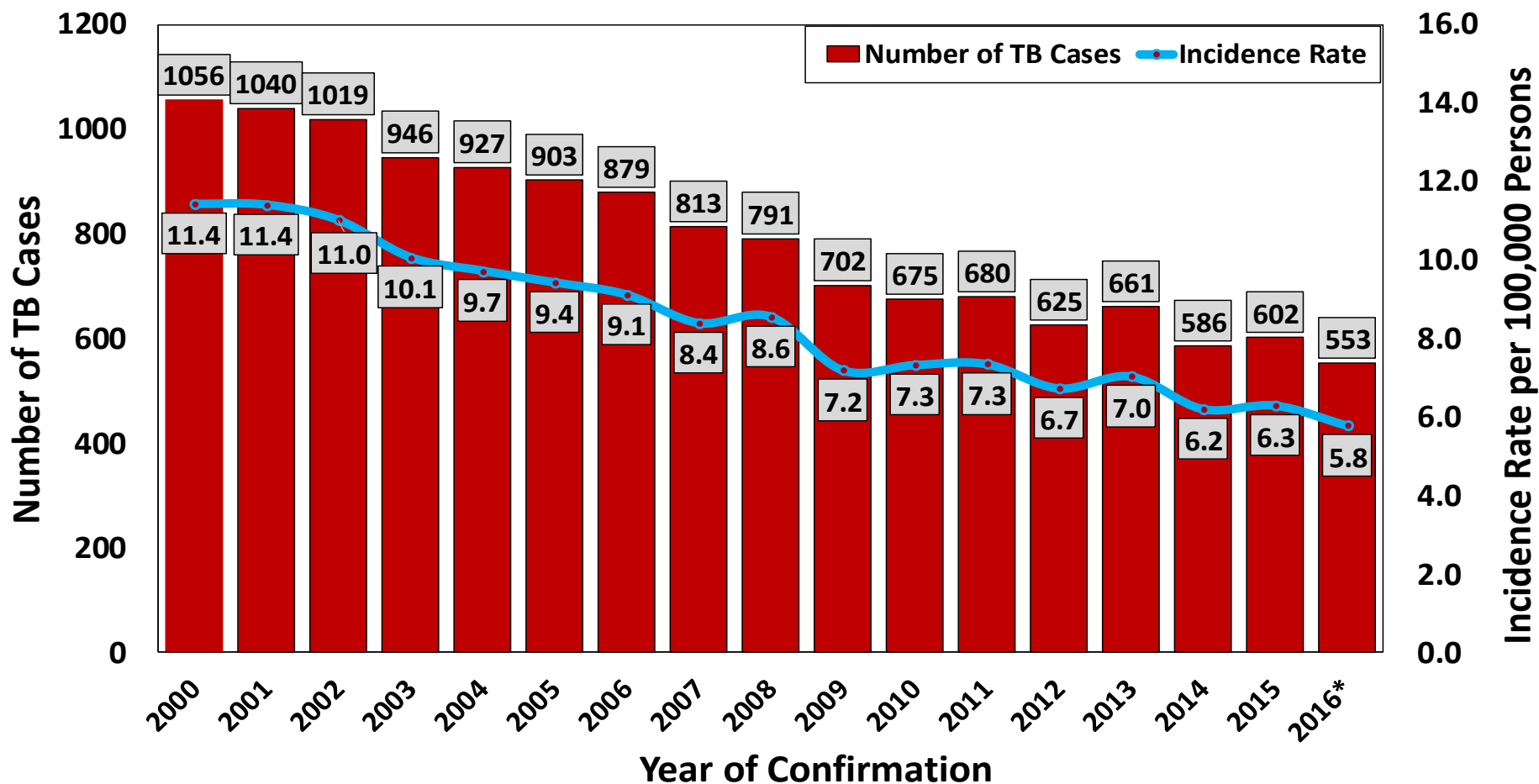


Background

- The Epidemiology and Research Unit at TBCP is training on ArcGIS to build mapping capabilities.
- Geographic clustering and spatial analysis can help fine tune TB prevention and elimination efforts in high risk populations
- The following represents some preliminary work towards neighborhood-specific intervention and prevention efforts.



TB Case Counts and Incidence Rates, LA County 2000-2016

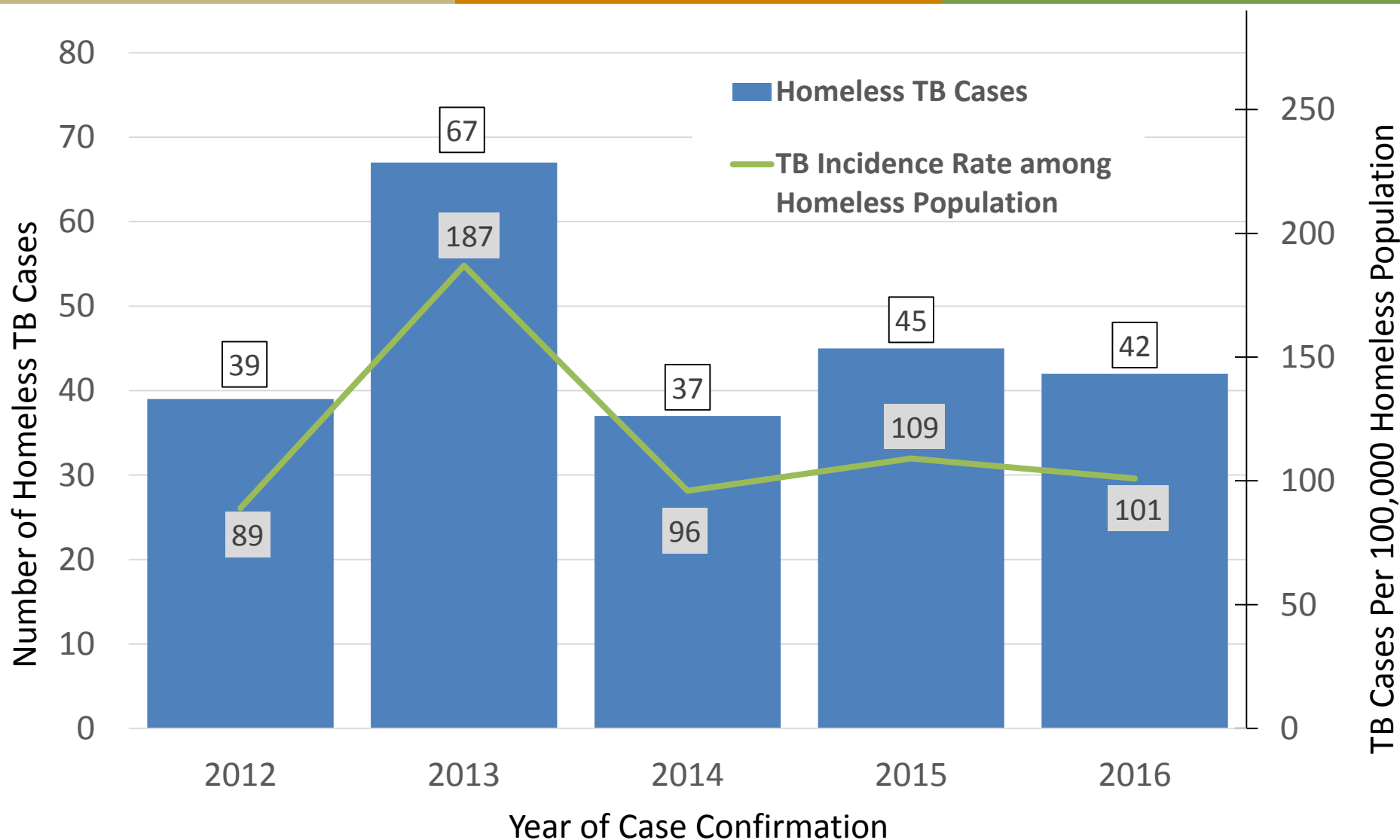


Data exclude Pasadena and Long Beach TB cases. Based on TRIMS data, updated 3/10/17.

Data are provisional and subject to change. Population estimates source: Internal Services Department Social Services Systems Division, *2015 Population Estimates, prepared for County of Los Angeles, 2016*. *2016 incidence rate was calculated using 2015 LAC population estimate.

Prepared by: TBCP Epidemiology & Research Unit, Aug 24, 2017.

Tuberculosis Rate among the Homeless Population, LA County 2012-2016



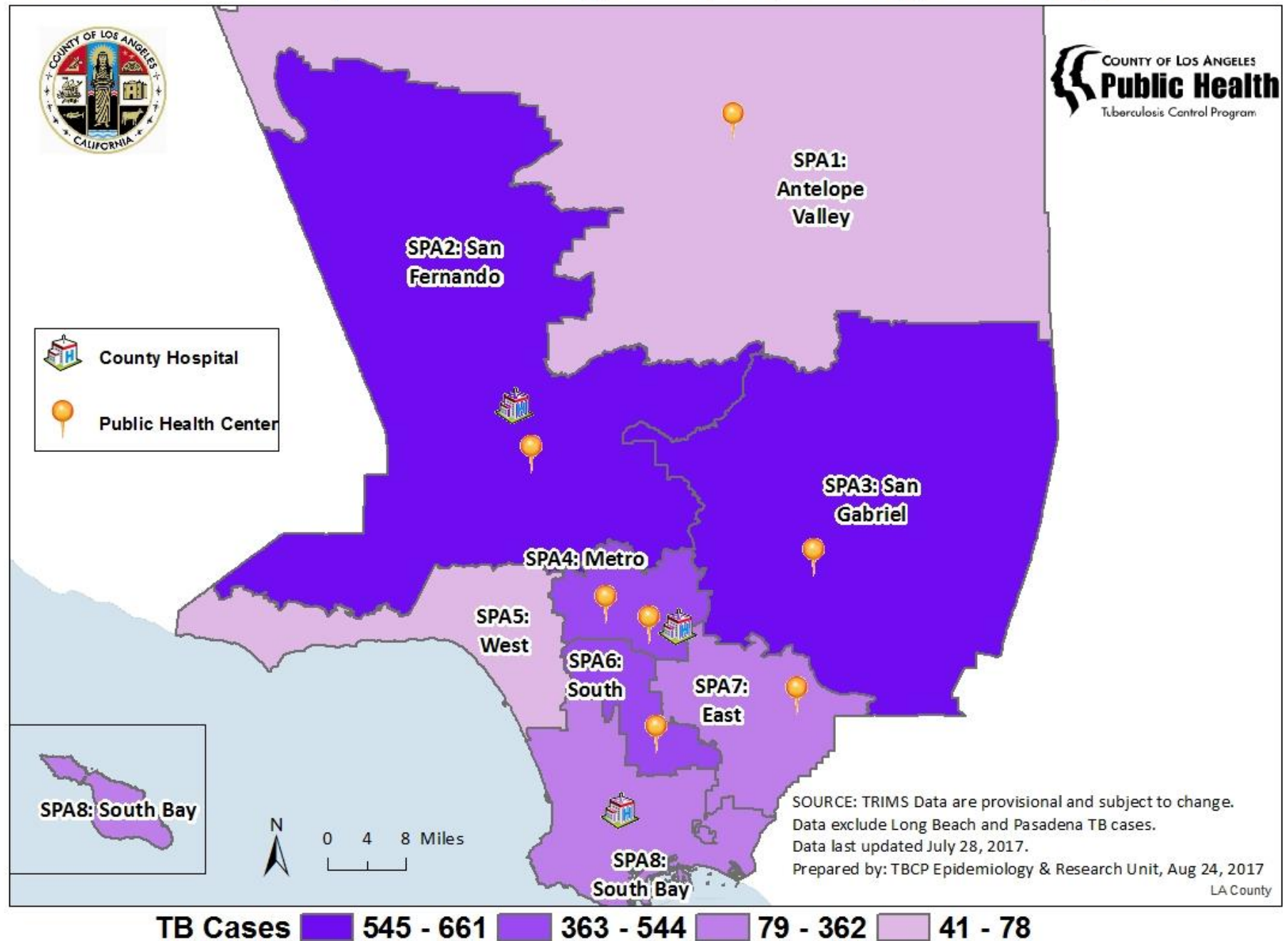
Data exclude Pasadena and Long Beach TB cases and homeless counts.

Based on TRIMS data, updated 7/28/17. Data are provisional and subject to change.

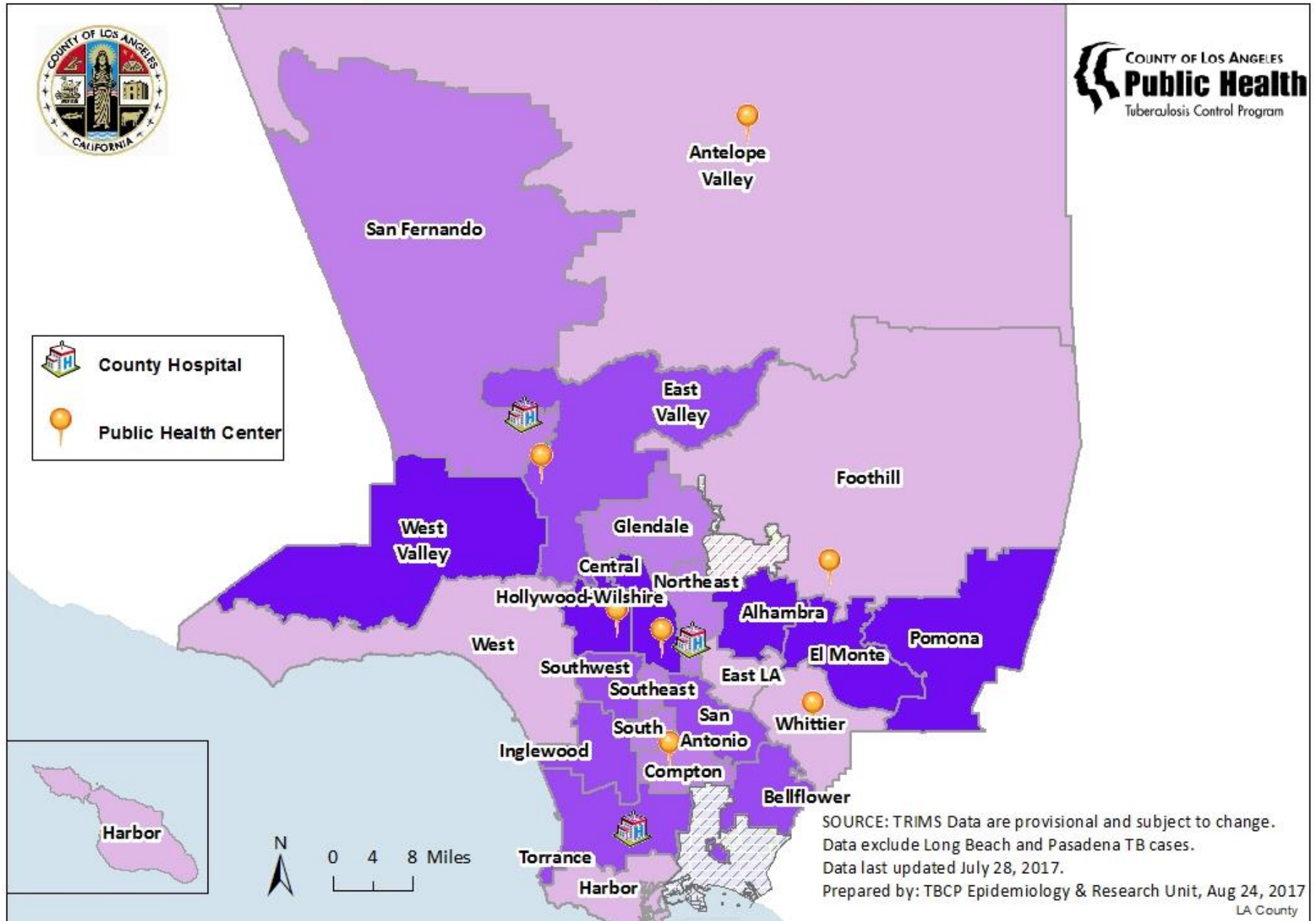
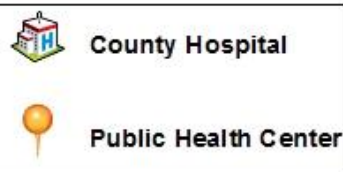
Estimated Homeless Count from Los Angeles Homeless Services Authority (LAHSA) and Glendale Homeless Count

Prepared by: TBCP Epidemiology & Research Unit, Aug 24, 2017.

Tuberculosis Cases by Service Planning Areas (SPA): Los Angeles County, 2012-2016



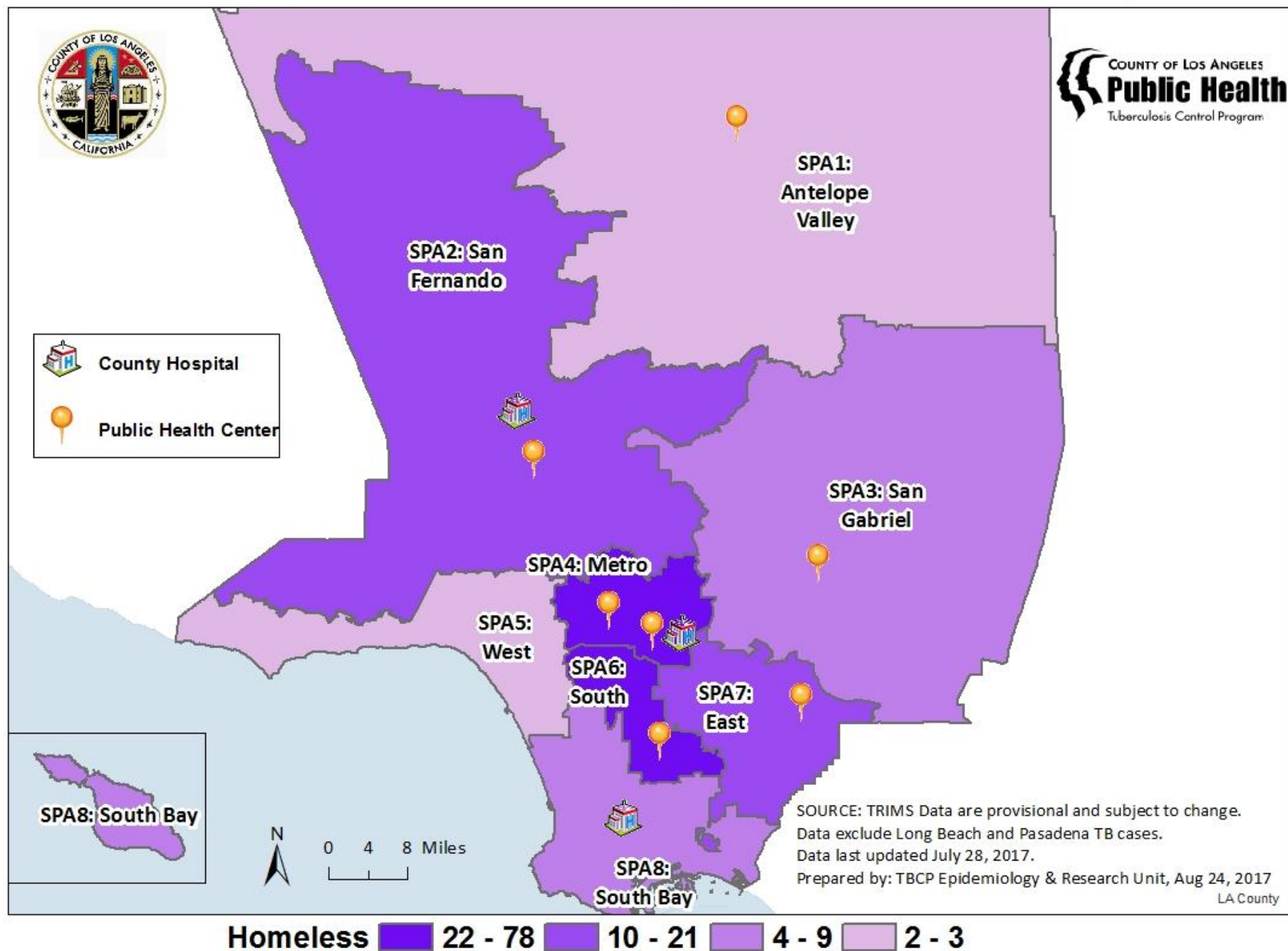
Tuberculosis Cases by Health District (HD): Los Angeles County, 2012-2016



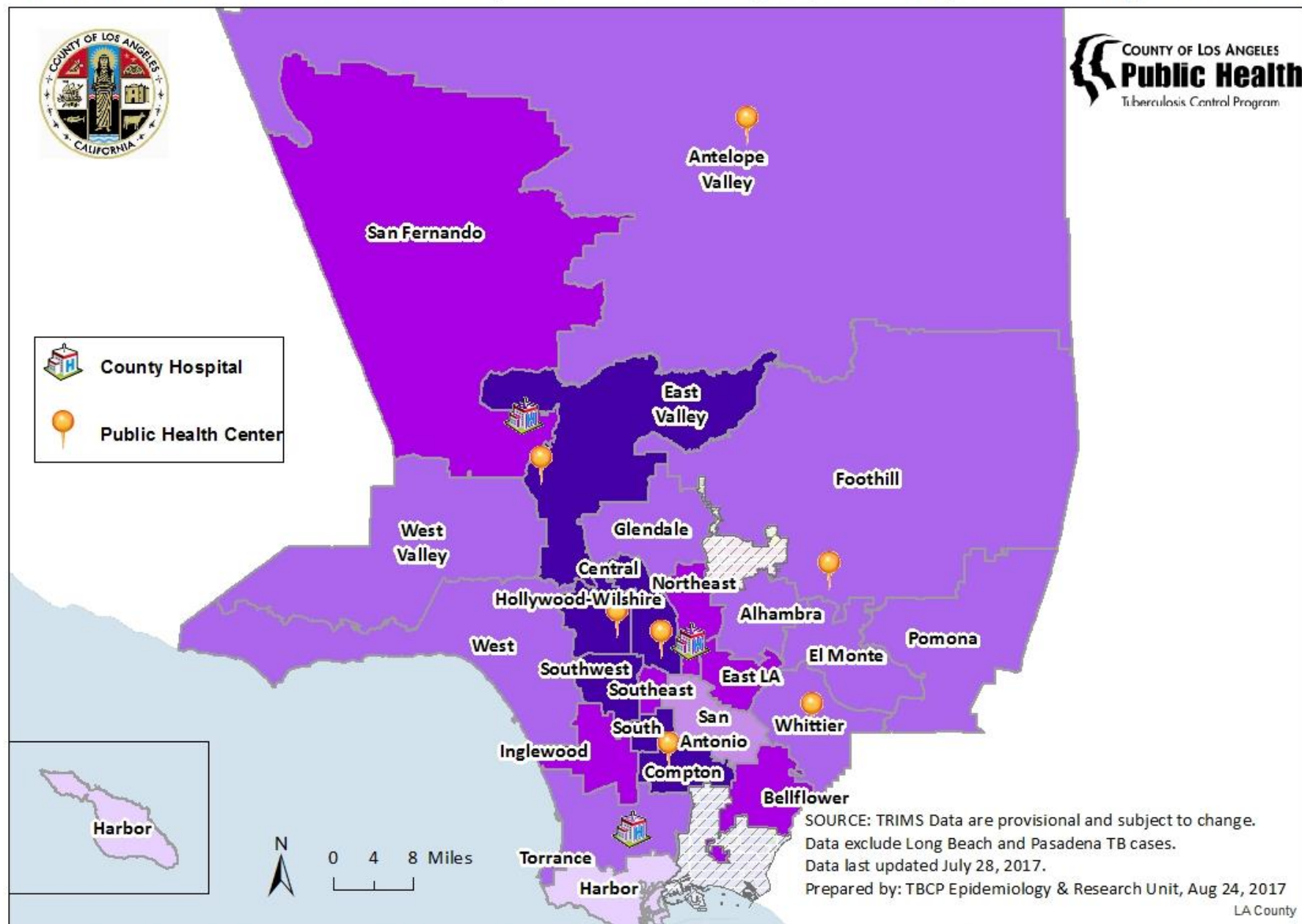
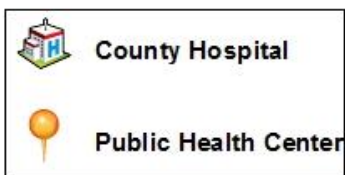
SOURCE: TRIMS Data are provisional and subject to change.
 Data exclude Long Beach and Pasadena TB cases.
 Data last updated July 28, 2017.
 Prepared by: TBCP Epidemiology & Research Unit, Aug 24, 2017
 LA County

TB Cases 151 - 256 112 - 150 79 - 111 29 - 78 Other Health Districts

Homeless Tuberculosis Cases by Service Planning Areas (SPA): Los Angeles County, 2012-2016

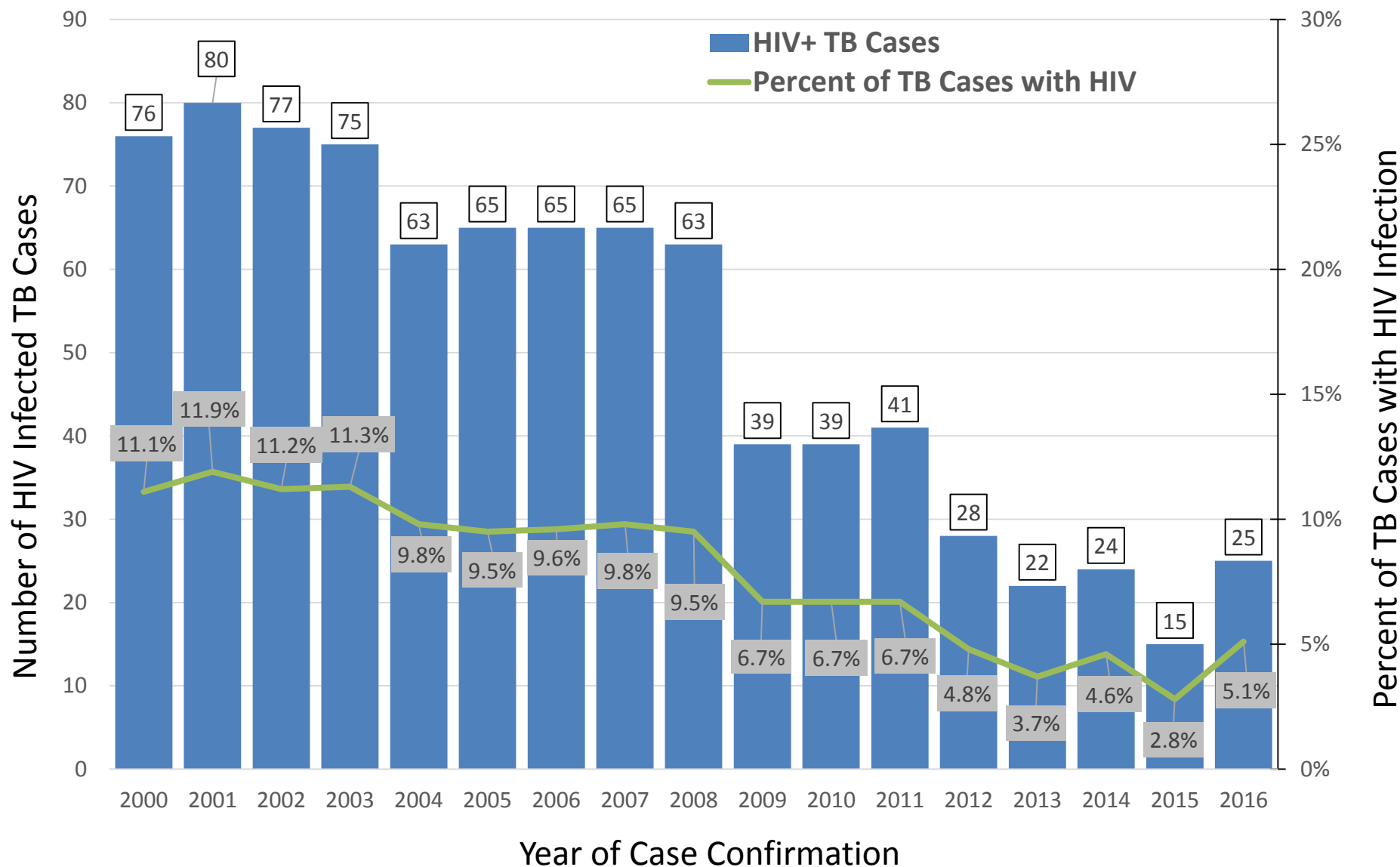


Homeless Tuberculosis Cases by Health District (HD): Los Angeles County, 2012-2016



Homeless 11 - 53 4 - 10 2 - 3 1 0 Other Health Districts

Tuberculosis Cases with known HIV Infection, LA County 2000-2016



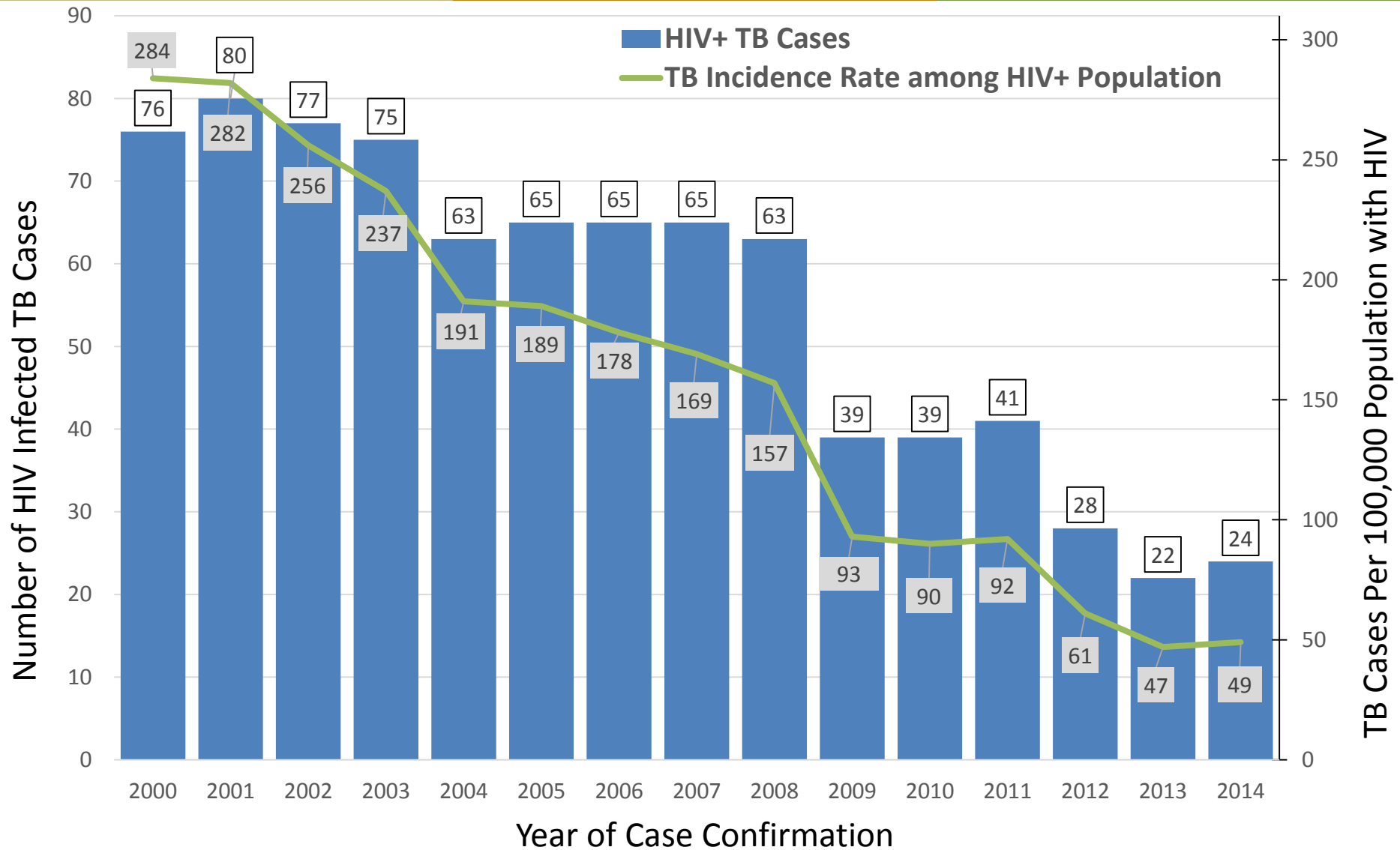
Data exclude Pasadena and Long Beach TB cases.

Based on TRIMS data, updated 8/11/17. Data are provisional and subject to change.

Estimated number of persons living with HIV from Division of HIV and STD Programs, LA County DPH 2013 and 2014 Annual HIV/STD Surveillance Reports

Prepared by: TBCP Epidemiology & Research Unit, Aug 24, 2017.

Tuberculosis Rate among Persons Living with HIV, LA County 2000-2014



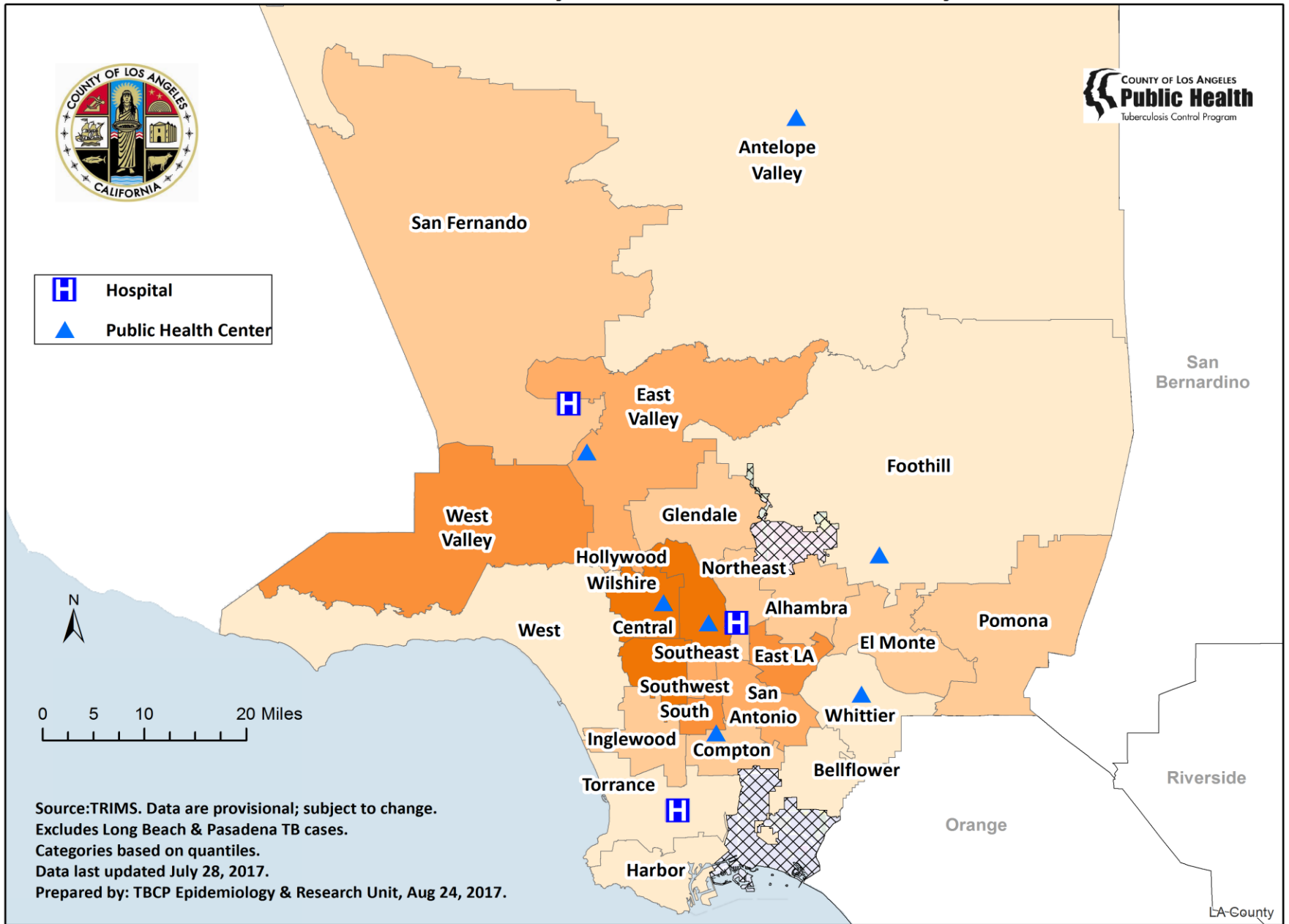
Data exclude Pasadena and Long Beach TB cases.

Based on TRIMS data, updated 8/11/17. Data are provisional and subject to change.

Estimated number of persons living with HIV from Division of HIV and STD Programs, LA County DPH 2013 and 2014 Annual HIV/STD Surveillance Reports

Prepared by: TBCP Epidemiology & Research Unit, Aug 24, 2017.

Tuberculosis Cases, HIV by Health District: LA County 2012-2016



TB Cases with HIV

11 - 22	5 - 10	3 - 4	2	0 - 1	Other Health District
---------	--------	-------	---	-------	-----------------------



Break

Simple Yoga





The Los Angeles County Department of Public Health Tuberculosis Control Program Doctors:



Dr. Julie Higashi
Director
Chief Physician



Dr. Alicia Chang
Deputy Director
Senior Physician



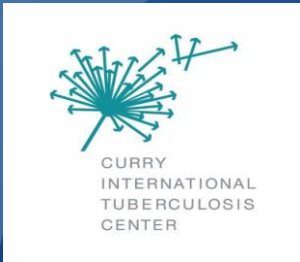
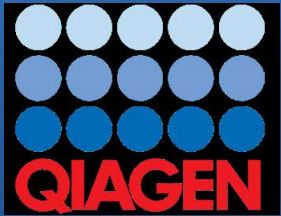
Dr. Steven Hwang
Lead Physician



Dr. Jan Singh
Lead Physician

TBCP Organizational Structure – 6 Units

- Medical Consultation, Patient Services & Reporting
- Education & Evaluation
- Epidemiology & Research
- Genotype Cluster Identification & Assessment
- Data Management & Information Technology
- Administration



Building our Bylaws

ARTICLE I – NAME:

1. The name of this organization shall be the Coalition to End TB in Los Angeles County.

ARTICLE II – VISION:

1. The vision of the Coalition is *promoting a tuberculosis free Los Angeles County where strong community partnerships foster education and equitable access to screening and treatment.*

Building our Bylaws

ARTICLE III – GOALS:

KEEP IT! TWEAK IT! DELETE IT!

Building our Bylaws

ARTICLE III – GOALS:

1. To act as spokes persons for tuberculosis control issues.
2. To collaborate with, advise and support the Tuberculosis Control Program with planning activities for World TB Day.
3. To advocate for the elimination of tuberculosis related health disparities.
4. To enlist community leadership and participation in tuberculosis-related programming and policy development.



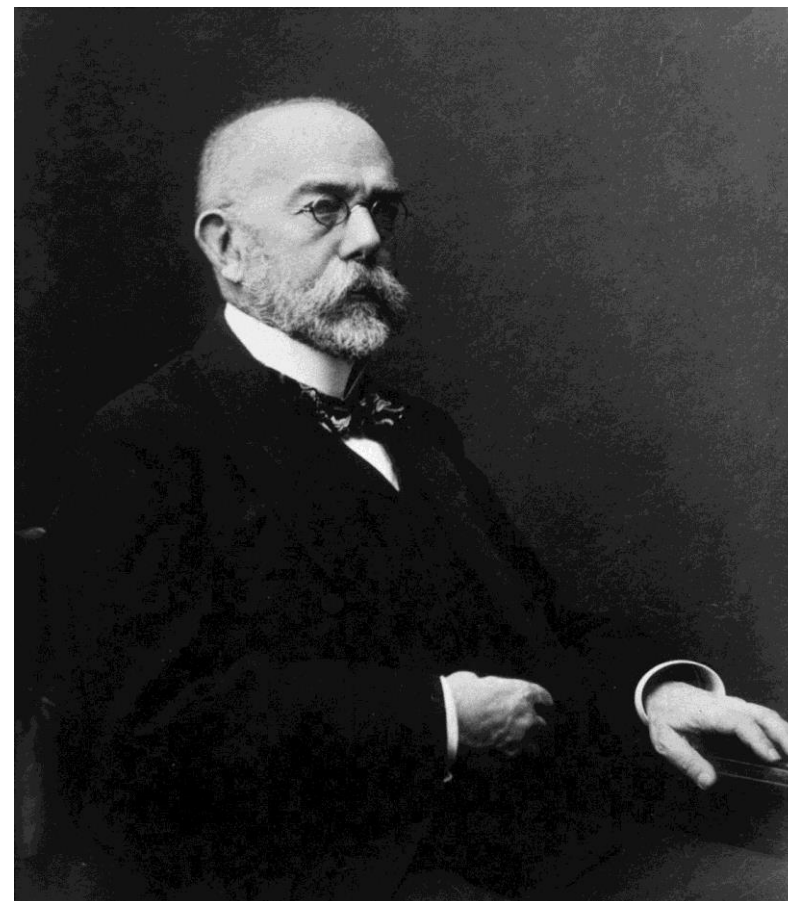
Claire Torres

World **TB** Day



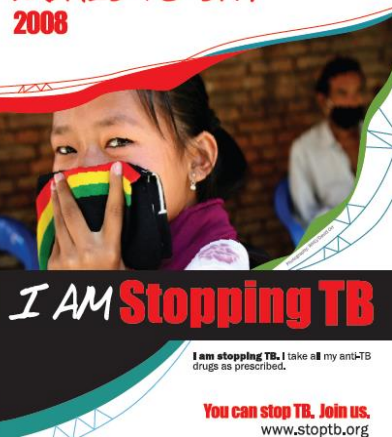
What is “World TB Day”?

- World TB Day commemorates the discovery of the TB bacillus - *Mycobacterium tuberculosis* - the organism that causes TB disease
- On March 24, 1882 Dr. Robert Koch, a German physician, presented his research findings to the Berlin Medical Society announcing his discovery.



World TB Day Logos

Stop TB Partnership
WORLD TB DAY
2008



2008/2009



2010/2011



2012/2013



2014/2015



2016/2017

World TB Day 2018

- Saturday, March 24, 2018 (only **205** days left!)
- Logo and Slogan **TBA**
- Possible approaches:
 - **Advocacy:** Reach out to government entities regarding TB control policies
 - **Communication:** Aim to change knowledge, attitudes, beliefs
 - **Mobilization:** Bring together community members and stakeholders to strengthen community participation in TB elimination
- Past activities:
 - Community fairs
 - Educational conferences (community or providers)
 - TB Awareness walk
 - Social media campaign



Activity

- Get into groups of 4 (try to partner with individuals you do not know)
- With our coalition vision in mind, discuss potential World TB Day activity ideas

Vision statement: *Promoting a tuberculosis free Los Angeles County where strong community partnerships foster education and equitable access to screening and treatment*

Updates?

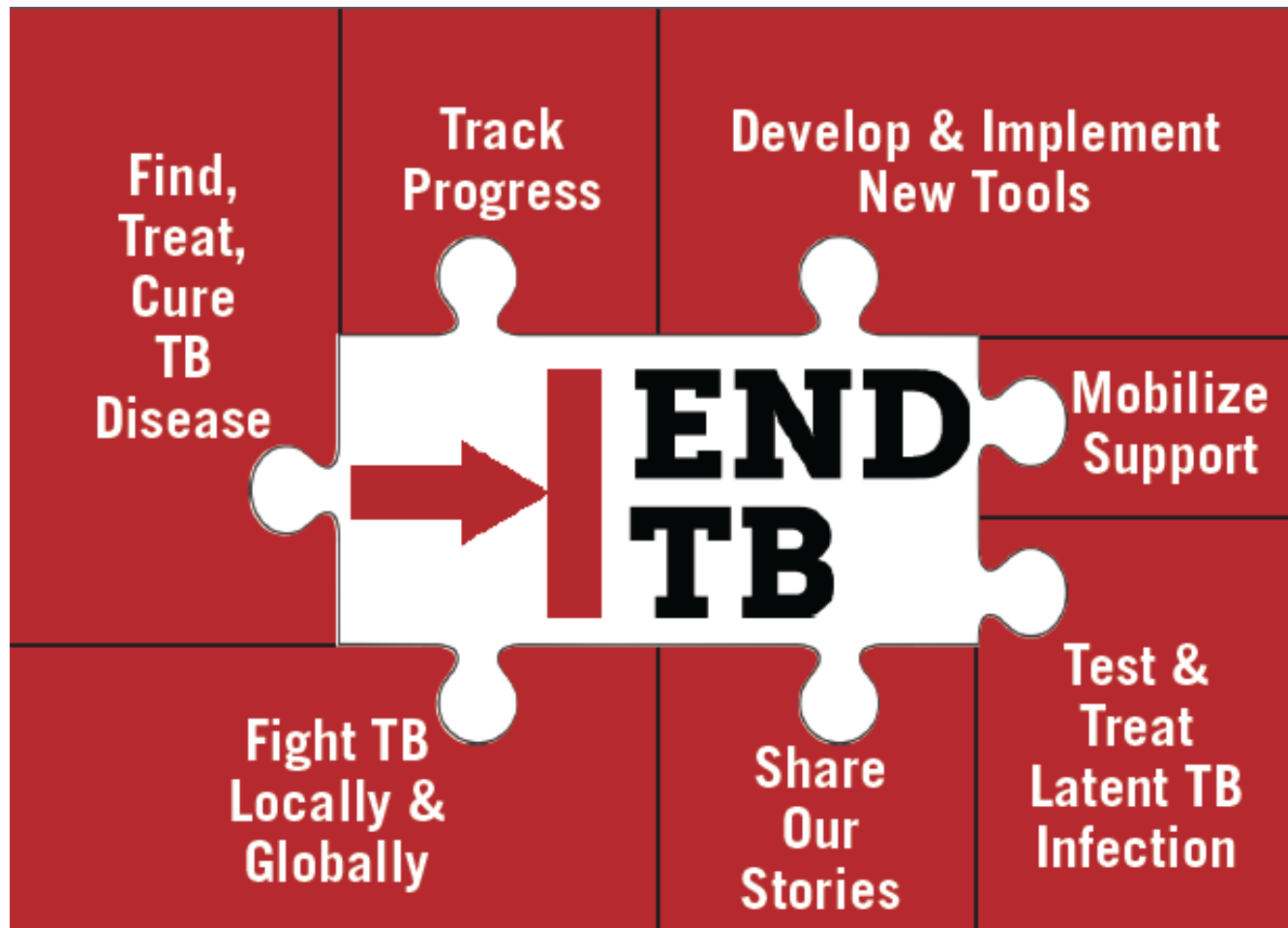




Who will host our next Coalition to End TB?



Thank you for coming!



MARCH 24 - WORLD TB DAY