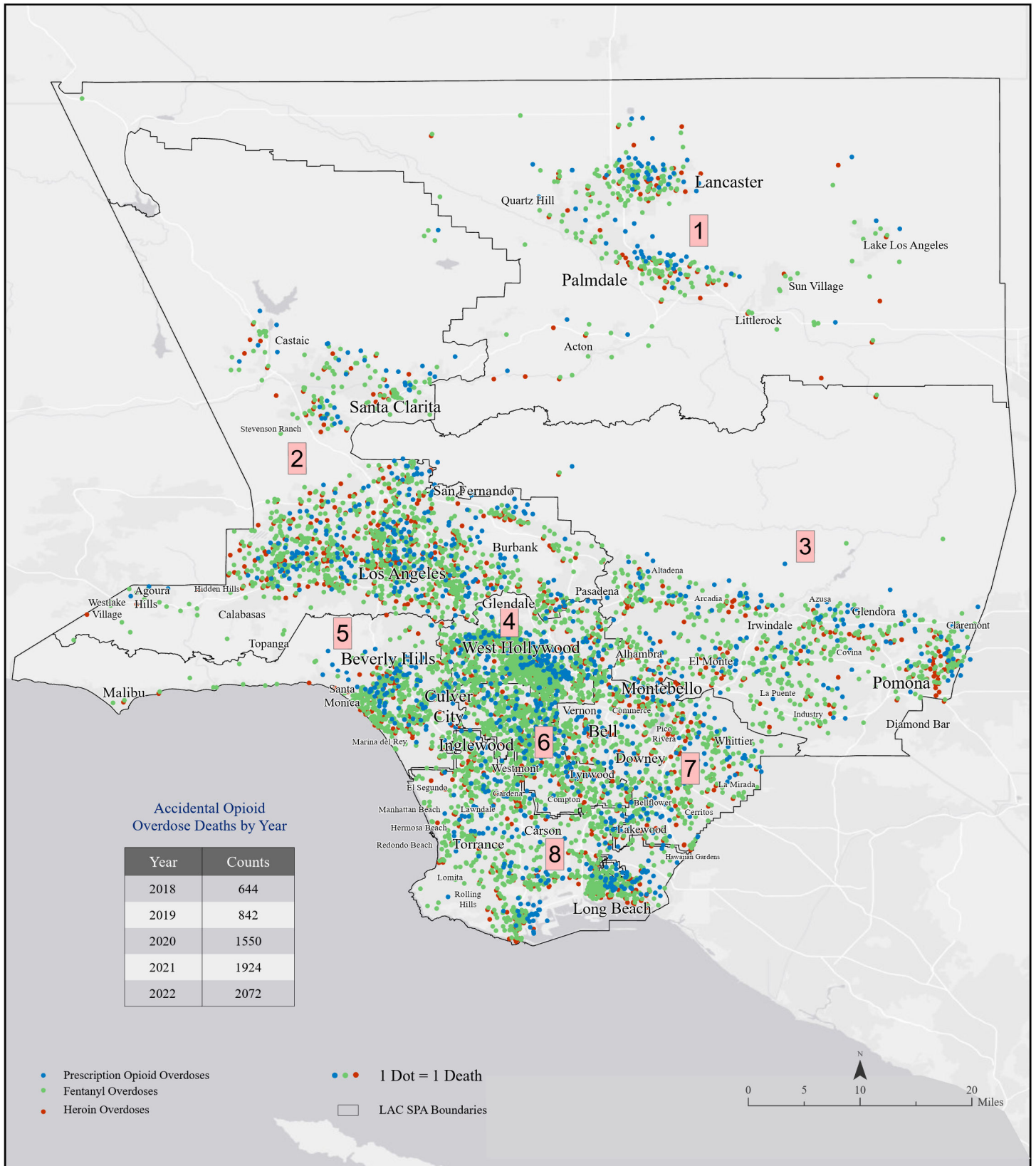


# Accidental Opioid Overdose Deaths by SPA Los Angeles County, 2018- 2022.

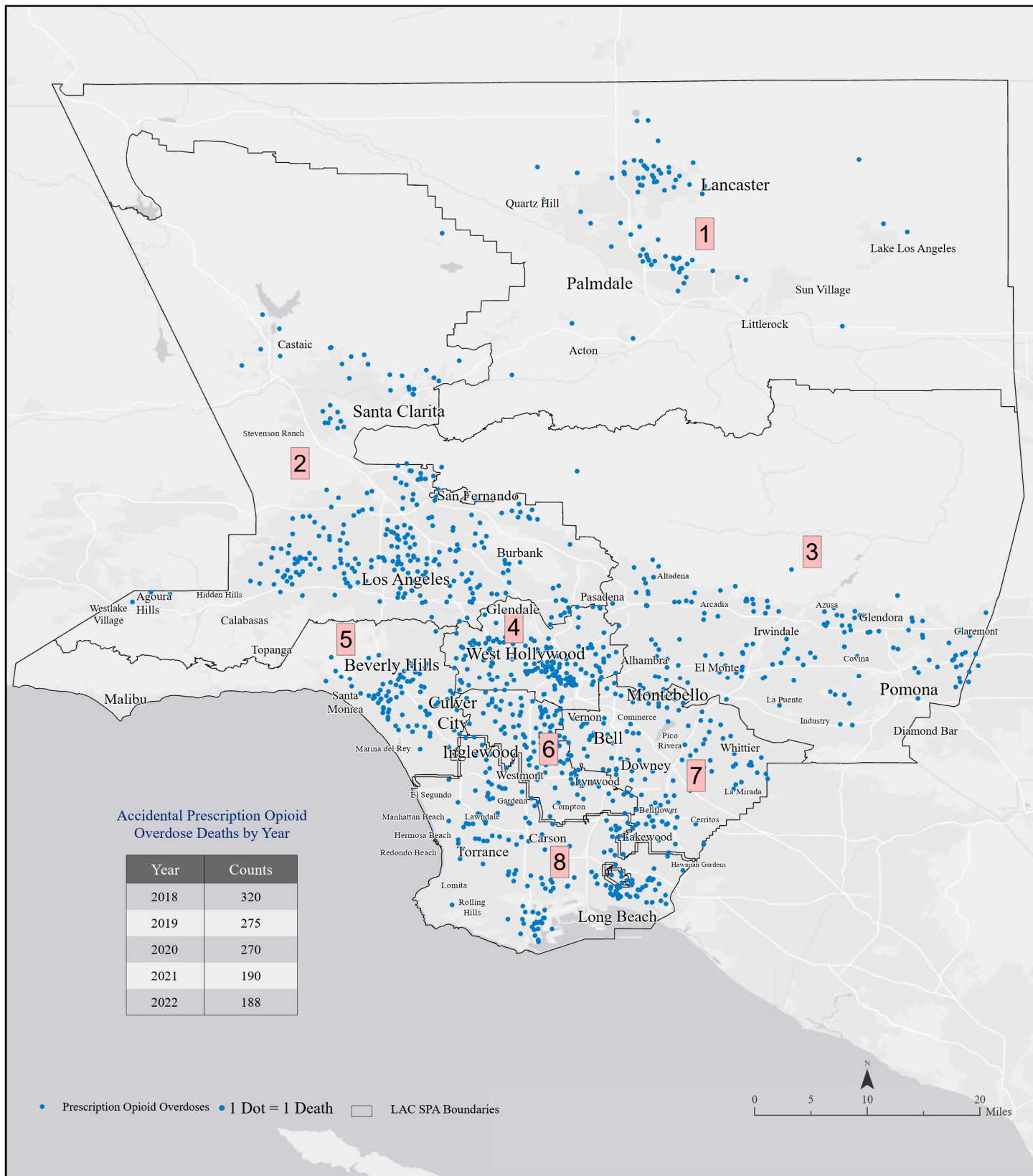


Data sources: SPA boundary retrieved from LAC eGIS repository updated 2022. 2018-2022 drug overdose deaths obtained from the LAC Medical Examiner-Coroner and processed by the Surveillance Data and Evaluation section and map produced by GIS section, Health Outcomes and Data Analytics (HODA) at SAPC.

Contact: Any questions for the map contact Tina Kim at [tkim@ph.lacounty.gov](mailto:tkim@ph.lacounty.gov)

Please note that drugs involved in an overdose death are not mutually exclusive, as overdose deaths often involve more than one drug

# Accidental Prescription Opioid Overdose Deaths by SPA Los Angeles County, 2018- 2022.

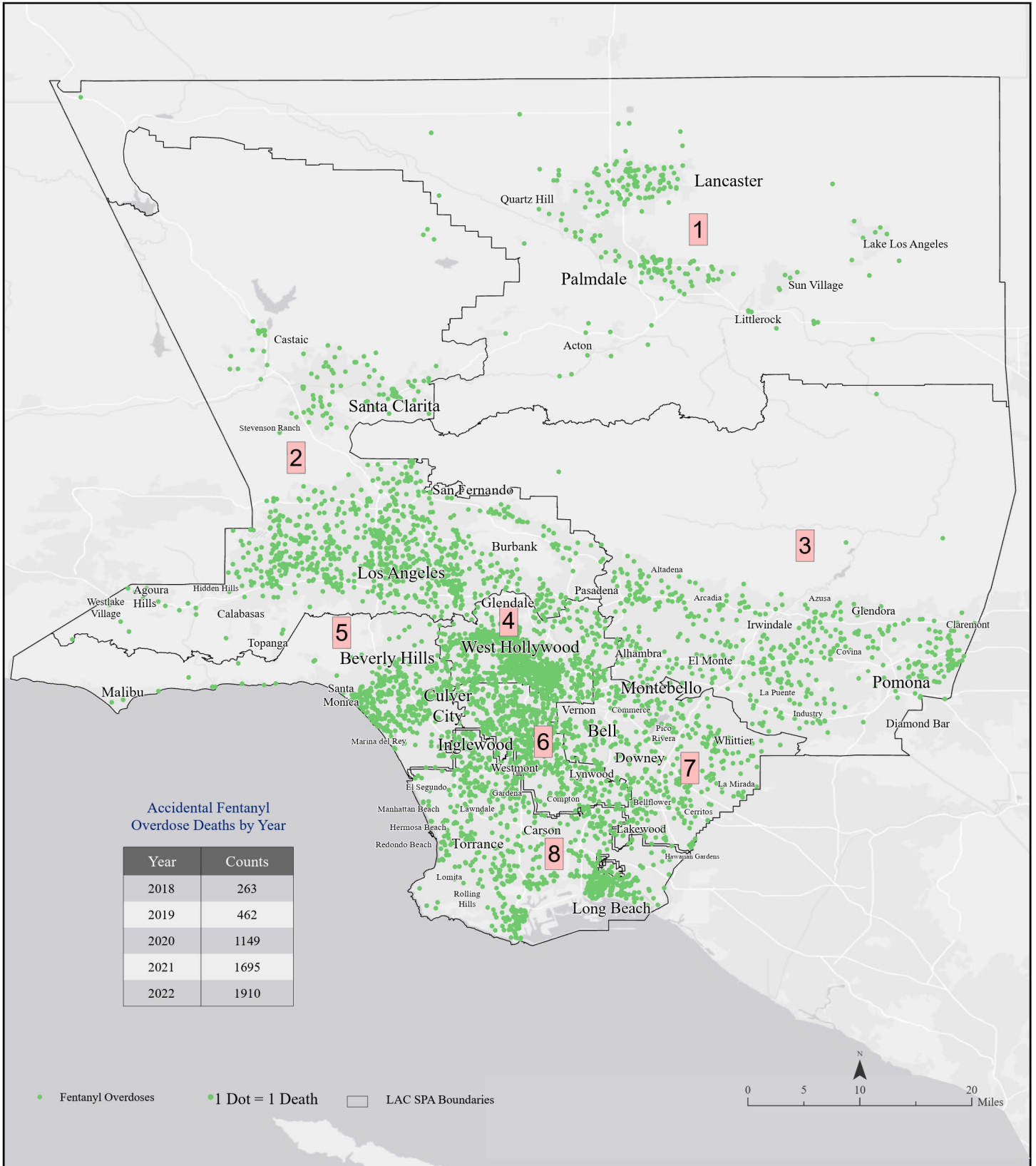


Data sources: SPA boundary retrieved from LAC eGIS repository updated 2022. 2018-2022 drug overdose deaths obtained from the LAC Medical Examiner-Coroner and processed by the Surveillance Data and Evaluation section and map produced by GIS section, Health Outcomes and Data Analytics (HODA) at SAPC.

Contact: Any questions for the map contact Tina Kim at [tkim@ph.lacounty.gov](mailto:tkim@ph.lacounty.gov)

Please note that drugs involved in an overdose death are not mutually exclusive, as overdose deaths often involve more than one drug

# Accidental Fentanyl Overdose Deaths by SPA Los Angeles County, 2018- 2022.

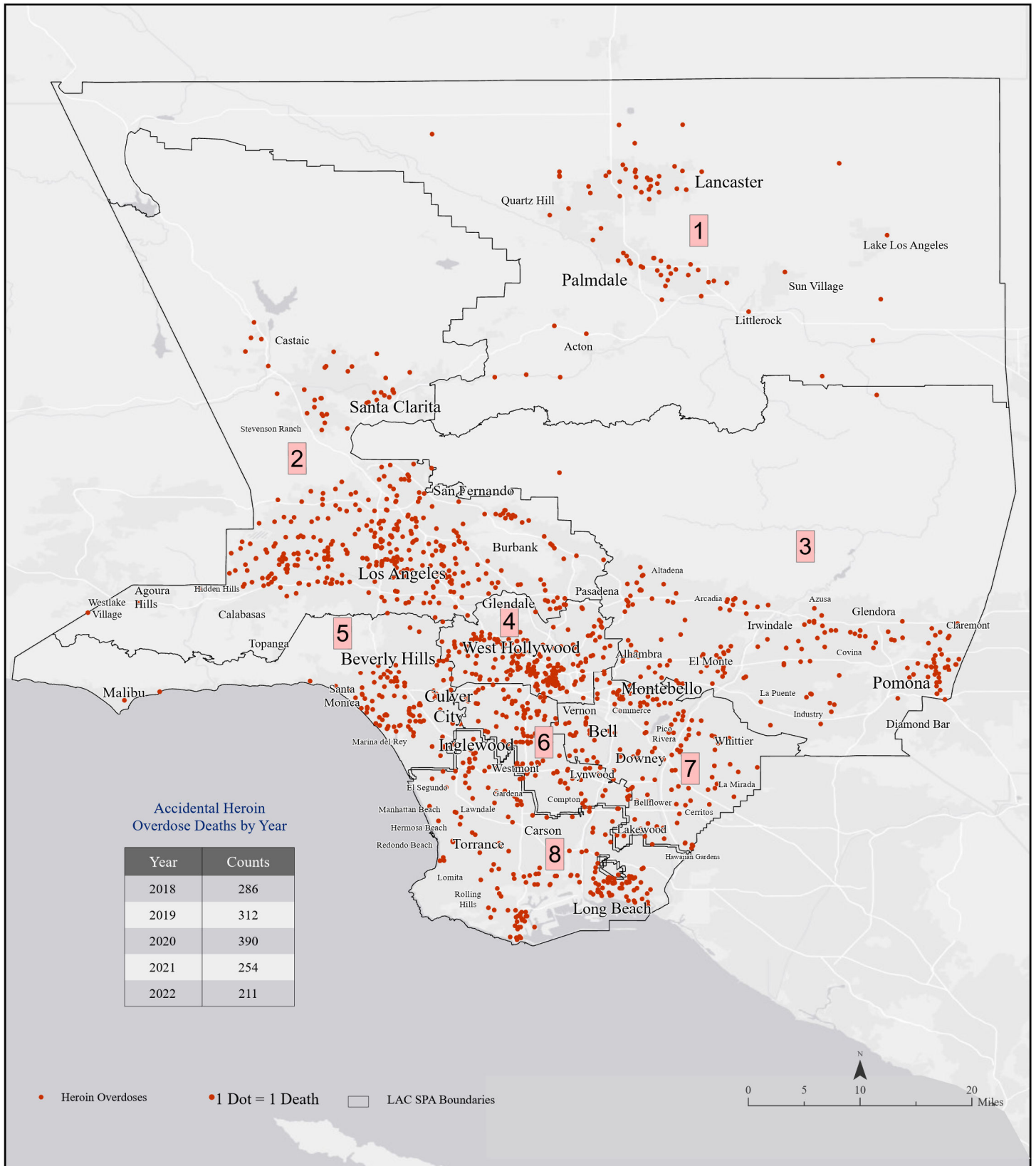


Data sources: SPA boundary retrieved from LAC eGIS repository updated 2022. 2018-2022 drug overdose deaths obtained from the LAC Medical Examiner-Coroner and processed by the Surveillance Data and Evaluation section and map produced by GIS section, Health Outcomes and Data Analytics (HODA) at SAPC.

Contact: Any questions for the map contact Tina Kim at [tkim@ph.lacounty.gov](mailto:tkim@ph.lacounty.gov)

Please note that drugs involved in an overdose death are not mutually exclusive, as overdose deaths often involve more than one drug

# Accidental Heroin Overdose Deaths by SPA Los Angeles County, 2018- 2022.

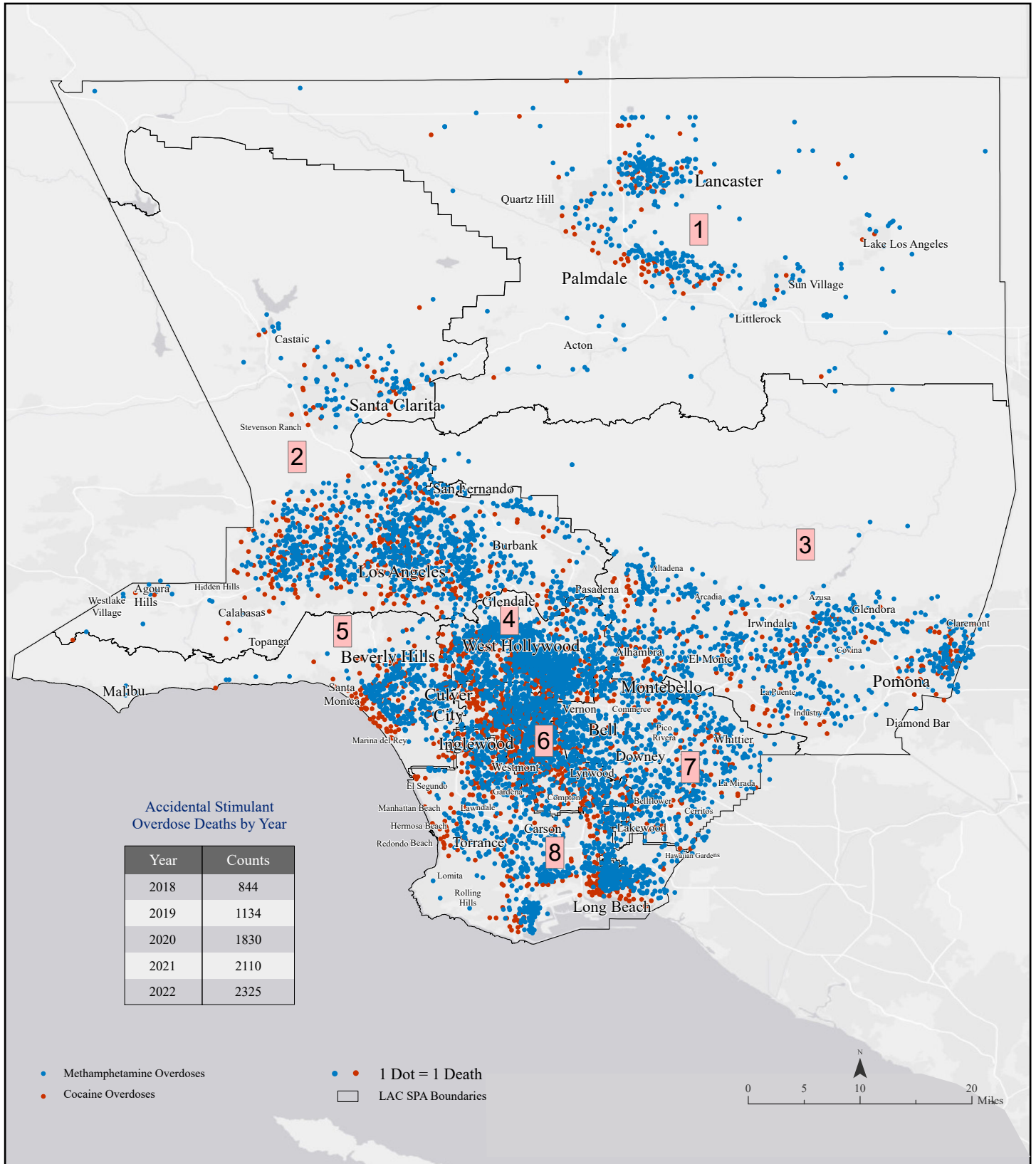


Data sources: SPA boundary retrieved from LAC eGIS repository updated 2022. 2018-2022 drug overdose deaths obtained from the LAC Medical Examiner-Coroner and processed by the Surveillance Data and Evaluation section and map produced by GIS section, Health Outcomes and Data Analytics (HODA) at SAPC.

Contact: Any questions for the map contact Tina Kim at [tkim@ph.lacounty.gov](mailto:tkim@ph.lacounty.gov)

Please note that drugs involved in an overdose death are not mutually exclusive, as overdose deaths often involve more than one drug

# Accidental Stimulant Overdose Deaths by SPA Los Angeles County, 2018- 2022.

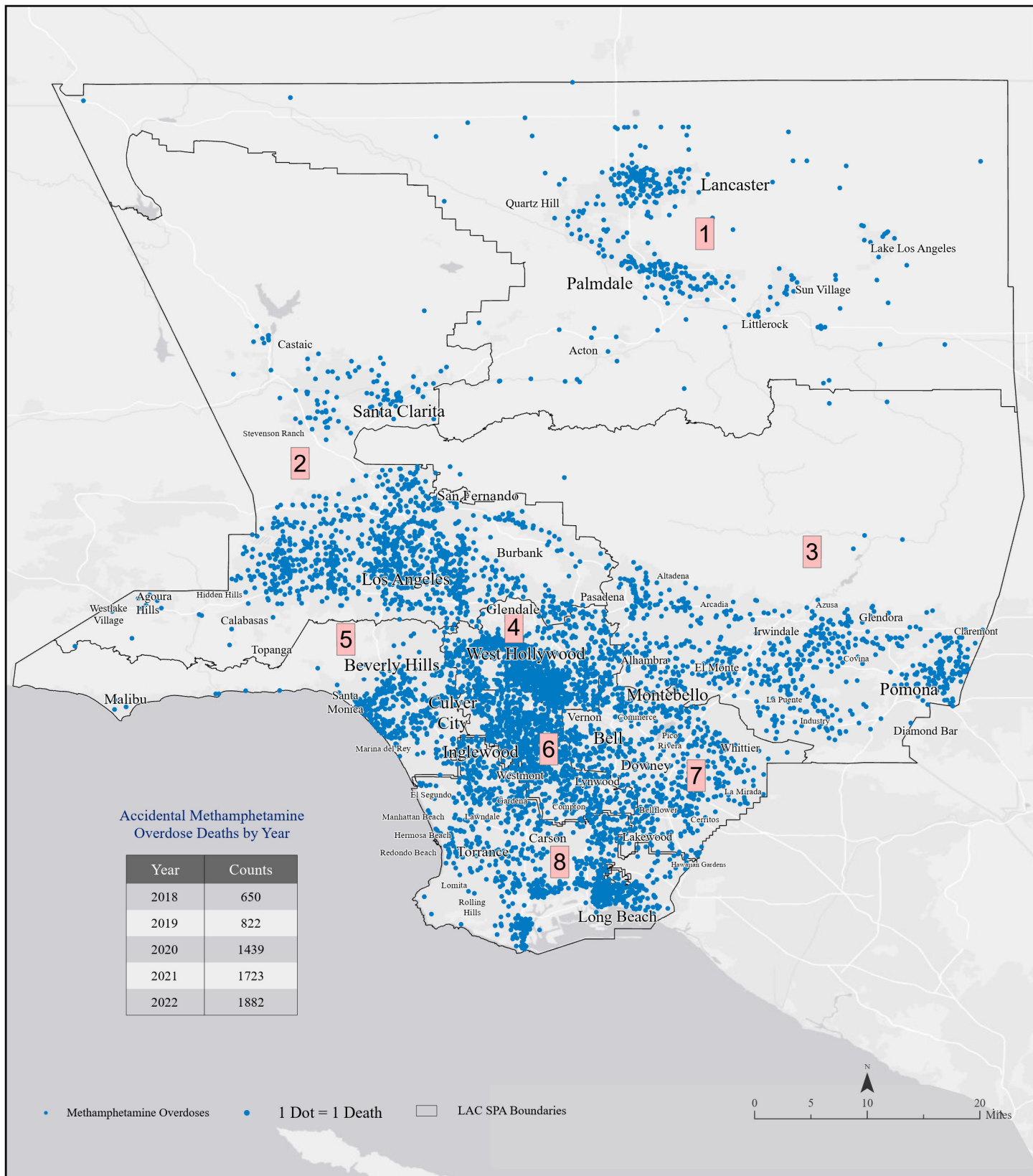


Data sources: SPA boundary retrieved from LAC eGIS repository updated 2022. 2018-2022 drug overdose deaths obtained from the LAC Medical Examiner-Coroner and processed by the Surveillance Data and Evaluation section and map produced by GIS section, Health Outcomes and Data Analytics (HODA) at SAPC.

Contact: Any questions for the map contact Tina Kim at [tkim@ph.lacounty.gov](mailto:tkim@ph.lacounty.gov)

Please note that drugs involved in an overdose death are not mutually exclusive, as overdose deaths often involve more than one drug

# Accidental Methamphetamine Overdose Deaths by SPA Los Angeles County, 2018- 2022.

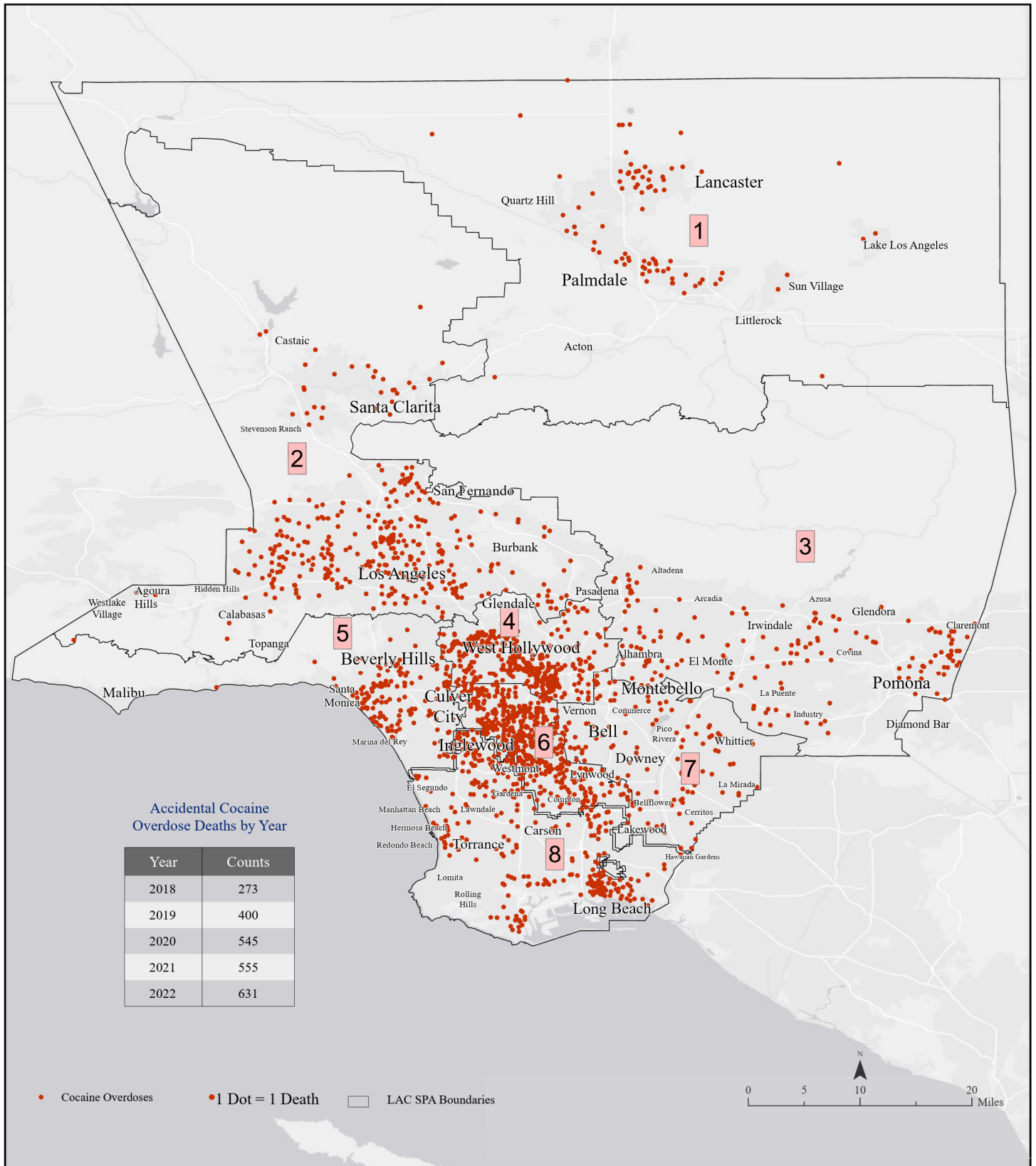


Data sources: SPA boundary retrieved from LAC eGIS repository updated 2022. 2018-2022 drug overdose deaths obtained from the LAC Medical Examiner-Coroner and processed by the Surveillance Data and Evaluation section and map produced by GIS section, Health Outcomes and Data Analytics (HODA) at SAPC.

Contact: Any questions for the map contact Tina Kim at [tkim@ph.lacounty.gov](mailto:tkim@ph.lacounty.gov)

Please note that drugs involved in an overdose death are not mutually exclusive, as overdose deaths often involve more than one drug

# Accidental Cocaine Overdose Deaths by SPA Los Angeles County, 2018- 2022.



Data sources: SPA boundary retrieved from LAC eGIS repository updated 2022. 2018-2022 drug overdose deaths obtained from the LAC Medical Examiner-Coroner and processed by the Surveillance Data and Evaluation section and map produced by GIS section, Health Outcomes and Data Analytics (HODA) at SAPC.

Contact: Any questions for the map contact Tina Kim at [tkim@ph.lacounty.gov](mailto:tkim@ph.lacounty.gov)

Please note that drugs involved in an overdose death are not mutually exclusive, as overdose deaths often involve more than one drug