

Monthly NACT Coordinator Meeting

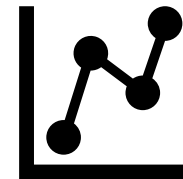
Christina Villegas

SAPC Strategic Network Development Branch

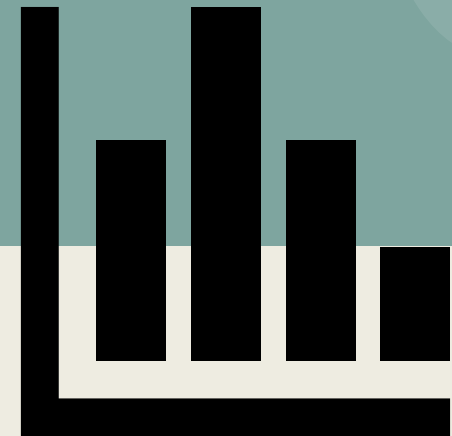


December Updates

- Purpose of new NACA fields is to report the most accurate and complete information for SBAT, 274 Reporting, and internal SAPC metrics:
 - ✓ Identify practitioners in your site
 - ✓ Update caseload capacity
 - ✓ Verify Language Capabilities
 - ✓ Update Special Populations Criteria, if applicable.
- Associated/Dissociate Practitioner Update
- Confirm Practitioners Current/Maximum Beneficiaries
- Validate Site and Practitioner Language Capabilities



Monthly Updates

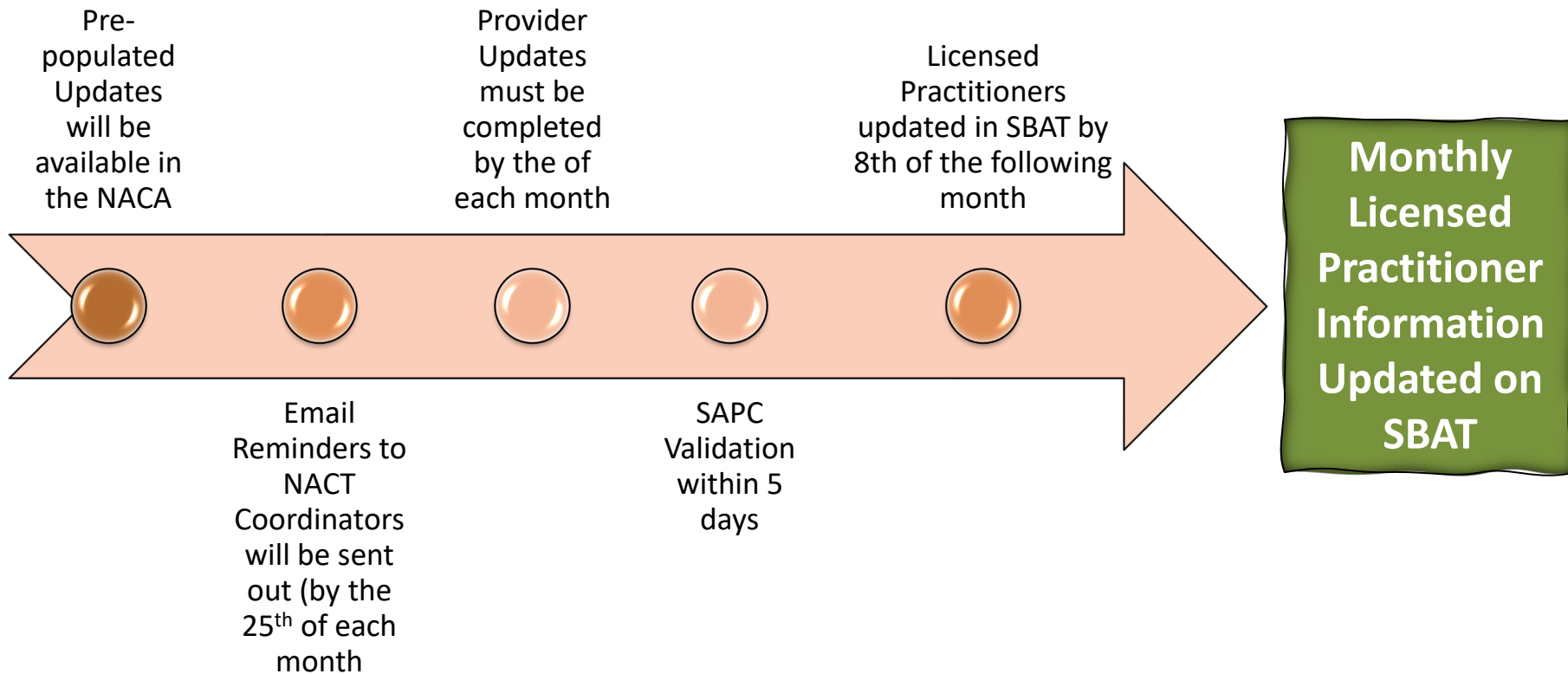


Confirm Associated Practitioners

Each month providers will be asked to:

- **Verify** the pre-populated practitioner information for each site. If there have been changes, update the NACA to reflect current information. If no changes, confirm associated practitioner tab.
 - Credential and license Information
 - DOB, Gender, Email Address (one-time only)- email reminders
 - Language Capabilities
 - NACT Coordinator and Back-up
 - Special Population criteria, if applicable.
- **Add** any new practitioners that have not been pre-populated from Sage
- **Dissociate** practitioners no longer associated with the site.
- **Verify** Current/Max beneficiaries for associated practitioners and update if there have been changes.
- **Confirm** and SAVE all changes completed.

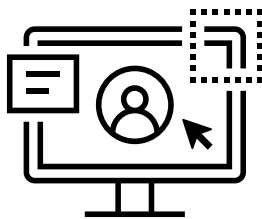
MONTHLY PRACTITIONER SUBMISSION DUE DATES



Site Language Capabilities

Arabic *	Armenian *	Cambodian *
<input type="text" value="N/A"/>	<input type="text" value="N/A"/>	<input type="text" value="N/A"/>
Cantonese *	English	Farsi *
<input type="text" value="N/A"/>	Fluent	<input type="text" value="N/A"/>
Hmong *	Korean *	Mandarin *
<input type="text" value="N/A"/>	<input type="text" value="N/A"/>	<input type="text" value="N/A"/>
Other Chinese *	Russian *	Spanish *
<input type="text" value="N/A"/>	<input type="text" value="N/A"/>	<input type="text" value="Fluent"/>
Tagalog *	Vietnamese *	ASL *
<input type="text" value="N/A"/>	<input type="text" value="N/A"/>	<input type="text" value="N/A"/>
Other Language Services Available		
<input type="text" value="N/A"/>		

Reminder
If agency has written materials or at least one practitioner who provides counseling in a language other than English, please update.



Do you have written materials in language other than English? *


Which Other Written Languages *

Does this site have at least 1 practitioner that provides counseling services in a specified language other than English? *

For which languages does this site meet the 1 practitioner criteria? Check all that apply. *

MONTHLY PRACTITIONER ASSOCIATION



General Information Accessibility Language Capabilities Modality Associated Practitioners

 Save

Below is a pre-populated list of practitioners associated with this specific site location.

- If a practitioner was recently onboarded, **but is not listed**: Use the “Associate New Practitioner” button to add them to the list.
- If a practitioner is listed, **but is no longer providing direct services at this location**: Use the down arrow button to disassociate them from the list.
- Regardless if after review you complete updates or have no updates, all providers **MUST**: Click on the “Confirmed Associated Practitioner” button. This will ensure your information is saved and prevent SAPC sending reminder e-mails when information is not updated.
- Confirmed Associated Practitioners on: **September 14th 2023, 11:28 am**

Associate New Practitioner
Confirm Associated Practitioners

First Name	Last Name	Modified On	Current Number of Medi-Cal Beneficiaries	Maximum Number of Medi-Cal Beneficiaries	Practitioner is associated with this site ↓	GPI and PPI combined pages status
Bat	Man	10/26/2023, 3:05:10 PM	2	6	Yes	Complete 
ISABEL	ABDALLA	9/26/2023, 9:09:57 AM	7	11	Yes	Complete 

Association Status of Practitioners
(providers may associate/dissociate from a validated list of practitioners)

"MONTHLY PRACTITIONER UPDATE" Process

General Information Accessibility * Language Capabilities * Modality * Associated Practitioners *

 Save

Below is a pre-populated list of practitioners associated with this specific site location.

- If a practitioner was recently onboarded, **but is not listed**: Use the "Associate New Practitioner" button to add them to the list.
- If a practitioner is listed, **but is no longer providing direct services at this location**: Use the down arrow button to disassociate them from the list.
- Regardless if after review you complete updates or have no updates, all providers **MUST**: Click on the "Confirmed Associated Practitioner" button. This will ensure your information is saved and prevent SAPC sending reminder e-mails when information is not updated.
- Confirmed Associated Practitioners on: **Associated Practitioners list has not yet been reviewed.**

NEW!

 Search

Associate New Practitioner

Confirm Associated Practitioners

First Name	Last Name	Modified On	Current Number of Medi-Cal Beneficiaries	Maximum Number of Medi-Cal Beneficiaries	Practitioner is associated with this site	GPI and PPI combined pages status	
JULIANA	ROMO	6/2/2023, 10:51:54 AM	0	0	Yes	Incomplete	▼
PRISCILLA	NUNEZ	6/2/2023, 10:51:54 AM	0	0	Yes	Incomplete	▼
NATHAN	WILSON	6/2/2023, 10:51:54 AM	0	0	Yes	Incomplete	▼

General Information Accessibility Language Capabilities * Modality

Below is a pre-populated list of practitioners associated with this specific site location.

- If a practitioner was recently onboarded, **but is not listed**: Use the "Associate New Practitioner" button to add them to the list.
- If a practitioner is listed, **but is no longer providing direct services at this location**: Use the down arrow button to disassociate them from the list.
- Regardless if after review you complete updates or have no updates, all providers **MUST**: Click on the "Confirmed Associated Practitioner" button. This will ensure your information is saved and prevent SAPC sending reminder e-mails when information is not updated.
- Confirmed Associated Practitioners on: **September 12th 2023, 11:02 am**

Once you click, "Confirm Associated Practitioners", you will see a **date stamp**



Expectation of NACT Coordinator

- Attend NACT related meetings to be informed of submission deadlines and updates to the NACA
- Update NACA monthly and validate required fields
- Communicate with NACT Team if there are any questions with your monthly update SAPC_NACT@ph.lacounty.gov
- Log-in to the NACA and make any necessary changes



Save the Dates Monthly NACT Coordinator Meetings

Subsequent Monthly NACT Coordinator Meetings

Wednesday, **January 24th** from 10AM-11AM

