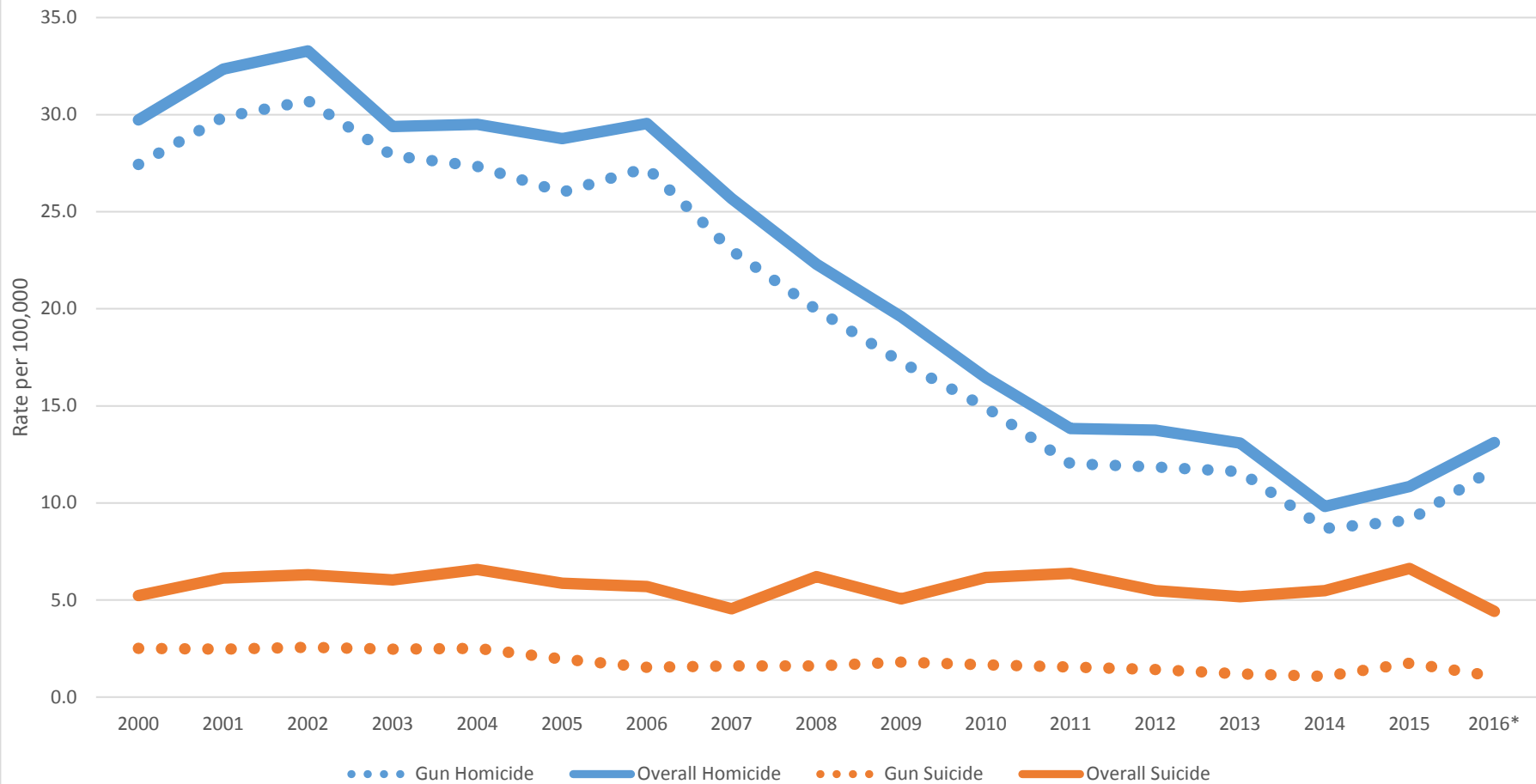


Homicide and Suicide Rates in Los Angeles County per 100,000 population (Gun Involved and Overall) Among 15-24 Year Olds by Year (Preliminary Estimates for 2016)



Notes: *2016 numbers and rates are estimates. Numbers of deaths for 2016 are estimated by doubling the number of death reported during the first six months of 2016 (as of August 2016). The estimated rate for 2016 is calculated using the 2015 population estimate since 2016 population estimates are not yet available. Numbers are based on homicides occurring in LA County (to residents and non-residents), while population estimates are based on LA County residents. Gun deaths are identified by searching the cause of death variables in the data for terms such as "GSW," "FIREARM," or "GUN." Some gun deaths may be missed using this method.

Sources: Deaths from Los Angeles County Department of Medical Examiner/Coroner. 2010-2015 Population Estimates, prepared by Hedderson Demographic Services for Los Angeles County ISD. 2000-2009 Smoothed Population Estimates, prepared by the Office of Health Assessment and Epidemiology, Los Angeles County Department of Public Health, released 7/18/2013.