

## Current Status

<b>Cases Reported Today</b>	<b>2,767</b>
<b>Total Cases</b>	<b>1,276,137</b>
<b>Total People Tested</b>	<b>7,213,245</b>
<b>Daily Test Positivity Rate</b>	<b>5.26%</b>
<b>7-Day Daily Average Case Rate</b>	<b>12.9 cases/100,000</b>
<b>Currently Hospitalized</b>	<b>645</b>
<b>Deaths Reported Today</b>	<b>13</b>
<b>Total Deaths</b>	<b>24,607</b>

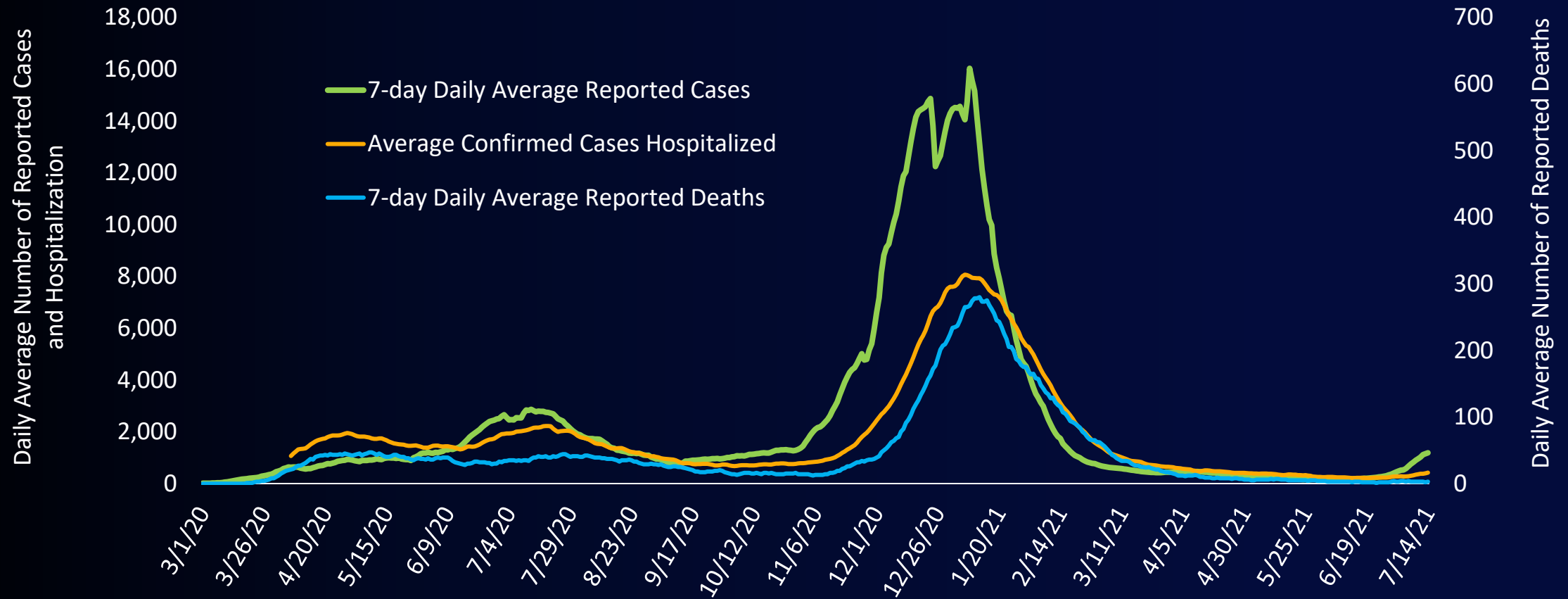


# CDC Indicators and Thresholds for Community Transmission of Covid

INDICATOR	Low transmission	Moderate transmission	Substantial transmission	High transmission
Case rate in past 7 days	0 – 9.99	10 – 49.99	50 – 99.99	≥ 100
(Daily case rate approximation)	(0 – 1.49)	(1.5 – 6.99)	(7 – 13.99)	(≥ 14)
Test positivity	< 5.0%	5.0% – 7.9%	8.0% – 9.9%	≥ 10%



# Number of COVID-19 Cases and Hospitalizations by Episode Date and Deaths by Date of Death March 1, 2020 – July 14, 2021



[covid19.lacounty.gov](https://covid19.lacounty.gov)

7/22/2021

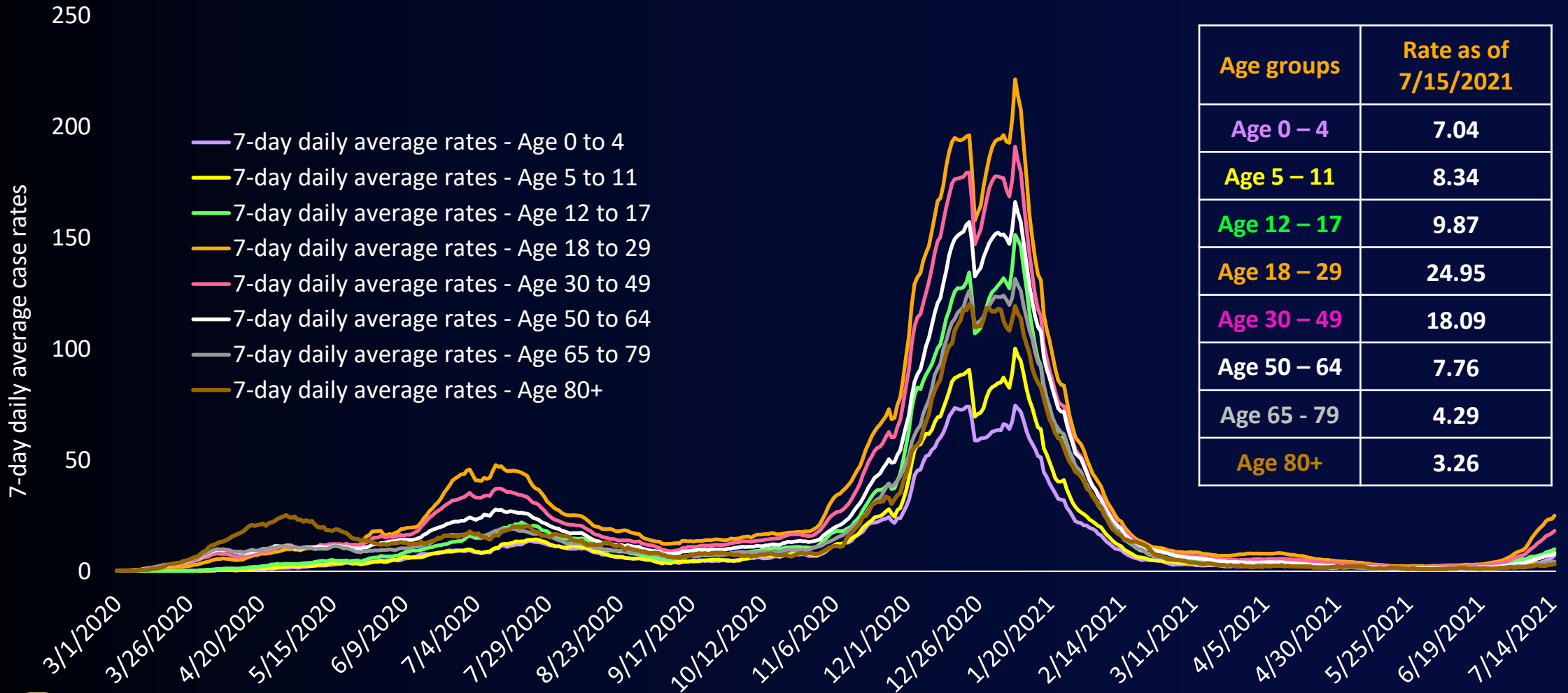
**Age-Adjusted Case, Hospitalization, and Death Rates per 100,000 People  
by Race and Ethnicity  
Over Two-Week Periods ending June 12 and July 10, 2021**

<b>Race/Ethnicity</b>	<b>Case Incidence Rate</b>		<b>Hospitalization Rate</b>		<b>Death Rate</b>	
	<b>June 12</b>	<b>July 10</b>	<b>June 12</b>	<b>July 10</b>	<b>June 12</b>	<b>July 10</b>
<b>Black</b>	43	<b>↑ 181</b>	8.8	<b>↑ 16.7</b>	0.7	<b>↑ 1.2</b>
<b>Latinx</b>	22	<b>↑ 62</b>	5.5	<b>↑ 7.5</b>	0.6	0.6
<b>White</b>	18	<b>↑ 83</b>	2.9	<b>↑ 5.3</b>	0.3	0.2
<b>Asian</b>	7	<b>↑ 33</b>	1.4	<b>↑ 2.7</b>	0.2	0.2



# 7-day daily average Case rates\* per 100,000 people by Age group

## March 1, 2020 to July 15, 2021



Age groups	Rate as of 7/15/2021
Age 0 – 4	7.04
Age 5 – 11	8.34
Age 12 – 17	9.87
Age 18 – 29	24.95
Age 30 – 49	18.09
Age 50 – 64	7.76
Age 65 - 79	4.29
Age 80+	3.26

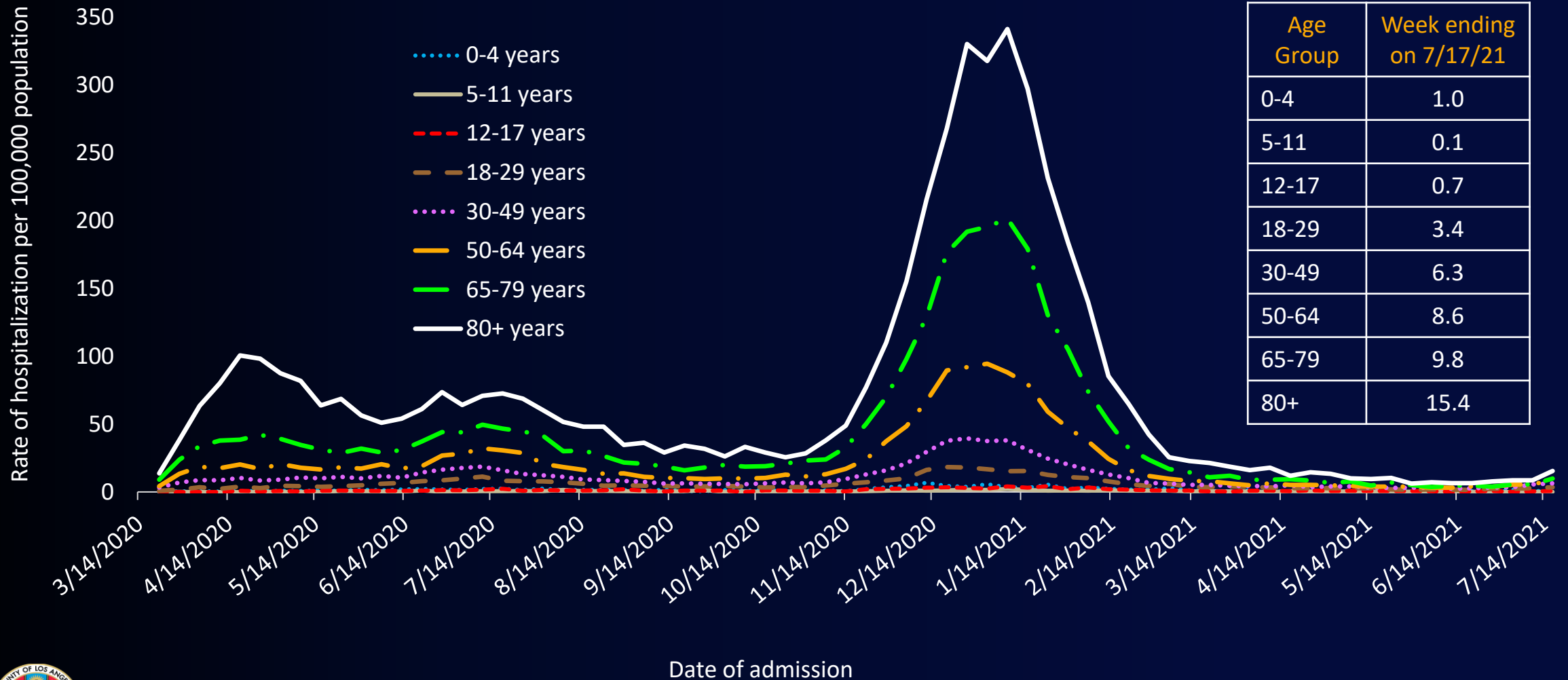


[covid19.lacounty.gov](https://covid19.lacounty.gov)

7/22/2021

\* Crude rates

# Weekly Rate of Hospitalization per 100,000 by Age Category, through July 17, 2021

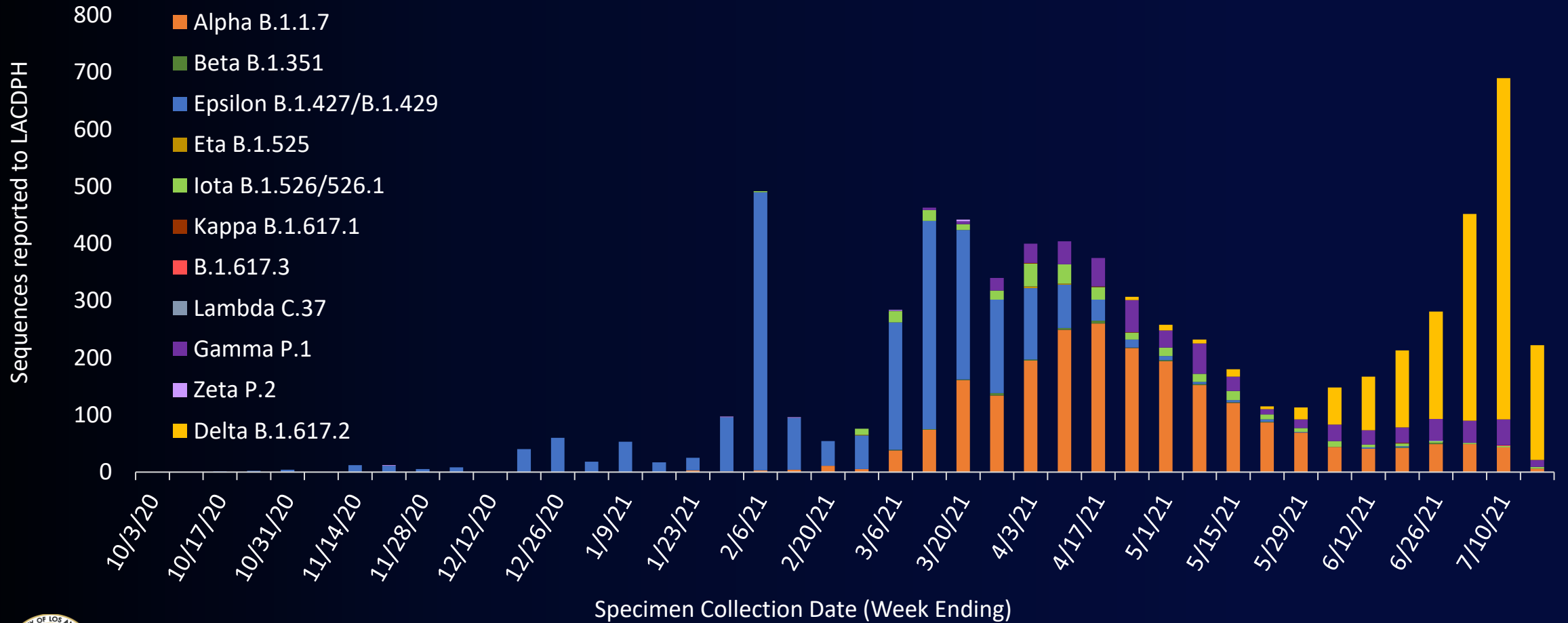


**covid19.lacounty.gov**

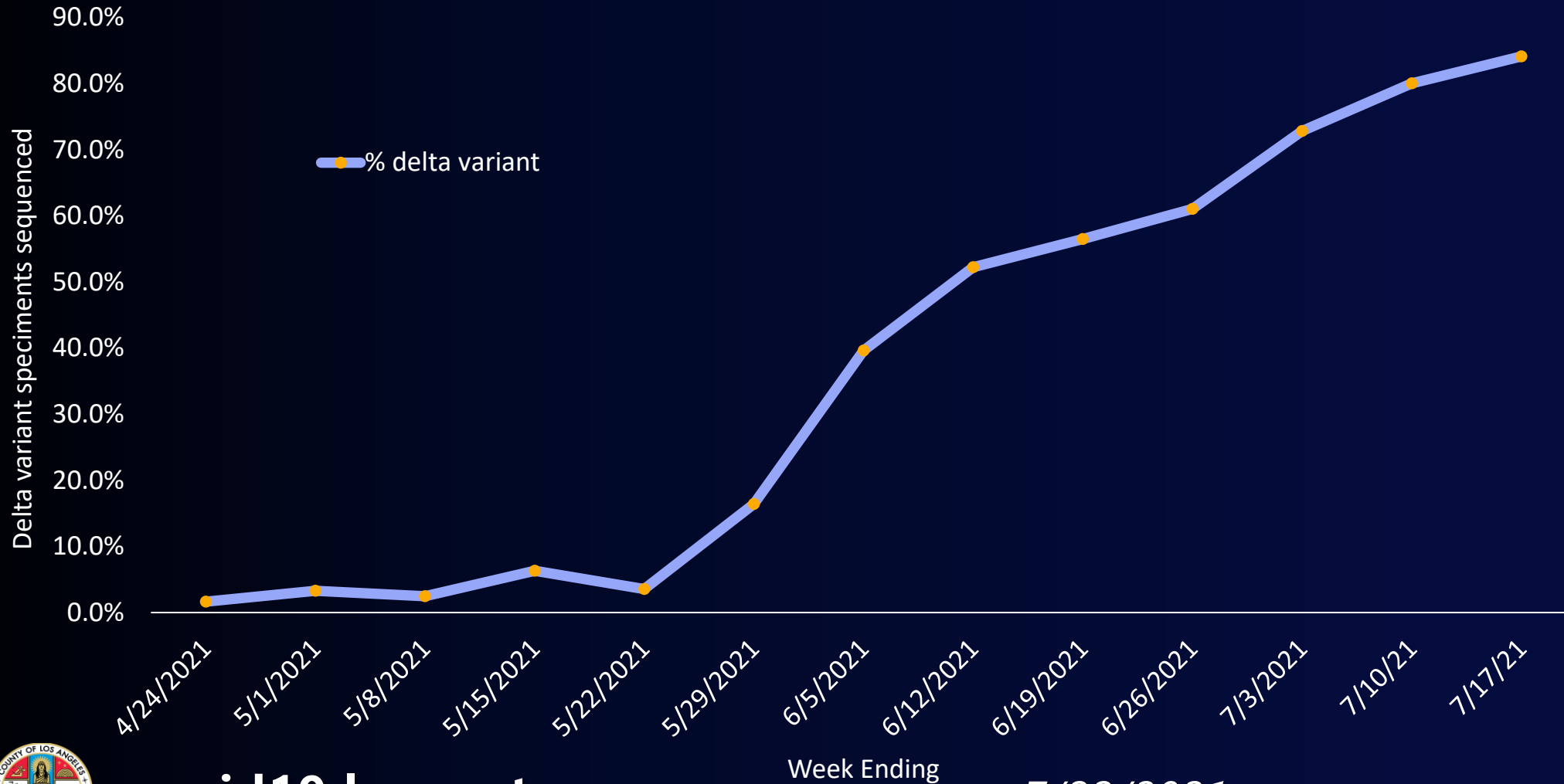
Date of admission

7/22/2021

# LAC Cases Caused by Variants of Concern by Specimen Collection Date Identified by PHL and Other California Laboratories



# Percentage of Sequenced Specimens That Were Delta Variant by Week of Sequenced Specimen Collection Date, LAC



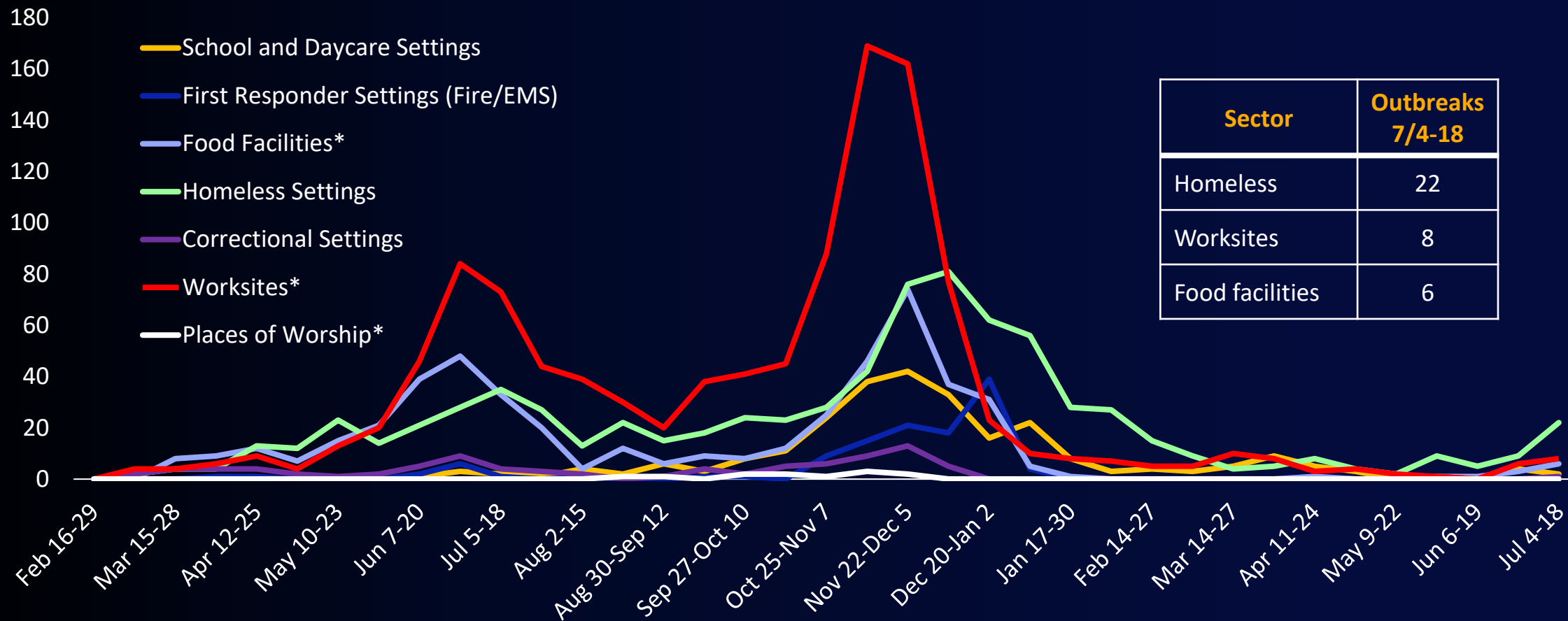
[covid19.lacounty.gov](https://covid19.lacounty.gov)

Week Ending

7/22/2021



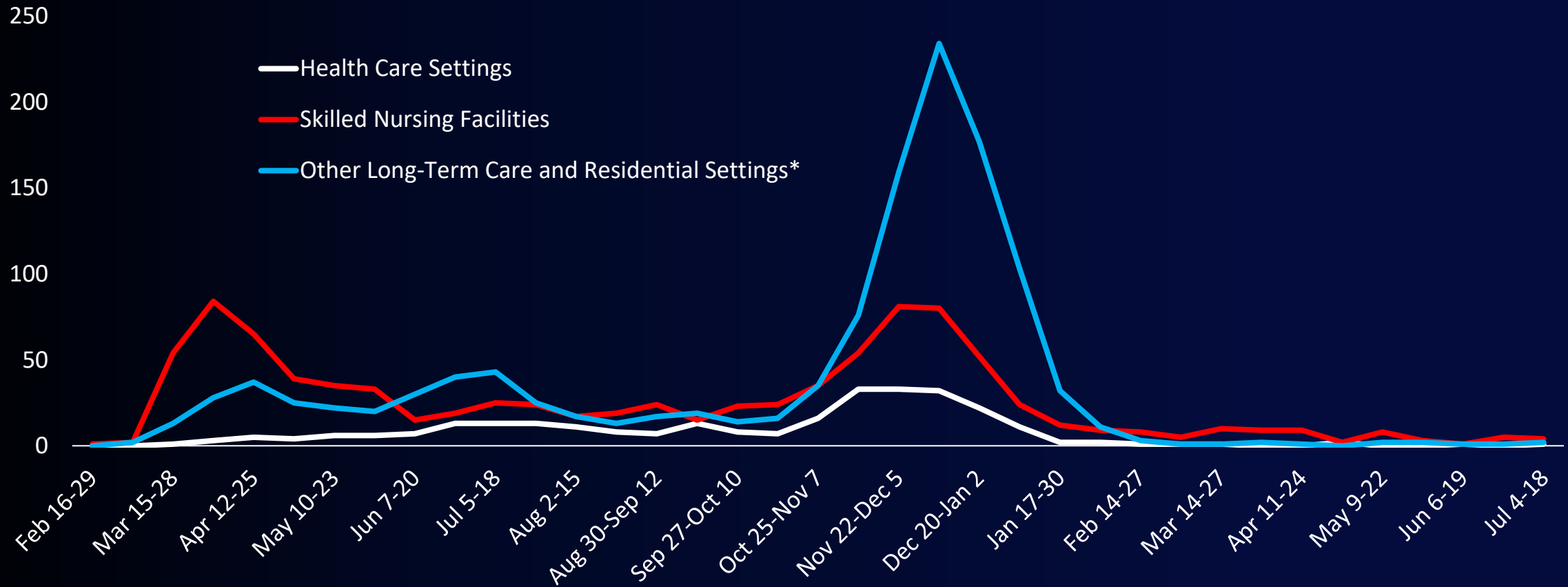
# All Non-Healthcare Outbreaks\* by Onset Date or Week Opened and Setting February 16, 2020 – July 18, 2021



\*Food facilities and worksites temporarily operated under surge criteria from mid-December to mid-March, which necessitated outbreaks with fewer than ten reported cases to be sent to Environmental Health for their follow-up. These may not be included on the trendlines above.



# All Healthcare and Long-Term Care Outbreaks\* by Onset Date or Week Opened & Setting February 16, 2020 – July 18, 2021



\*Other long-term care and residential settings implemented surge criteria in December, which raised the threshold for outbreak criteria in non-skilled nursing facility long-term care settings. These may not be included on the trendlines above.



**covid19.lacounty.gov**

7/22/2021

# Comparing Skilled Nursing Facility Outbreaks in Summer 2020 and 2021

May – June, 2020  
**52 SNF Outbreaks**  
1,350 resident cases  
981 staff cases



**2,331 cases**  
**575 hospitalizations**  
**333 deaths**

June – July, 2021  
**8 SNF Outbreaks**  
17 resident cases  
2 staff cases



**19 cases**  
**1 hospitalization**  
**0 deaths**



# COVID-19 Vaccinations Among LAC Residents 12+

## As of July 18, 2021

<b>Total Doses Administered</b>	<b>10,845,531</b>
<b>First Doses</b>	<b>6,013,569</b>
<b>Second Doses</b>	<b>4,831,962</b>
<b>LAC Residents with <math>\geq 1</math> Dose</b>	<b>6,052,087</b>
<b>LAC Residents Fully Vaccinated</b>	<b>5,303,696</b>



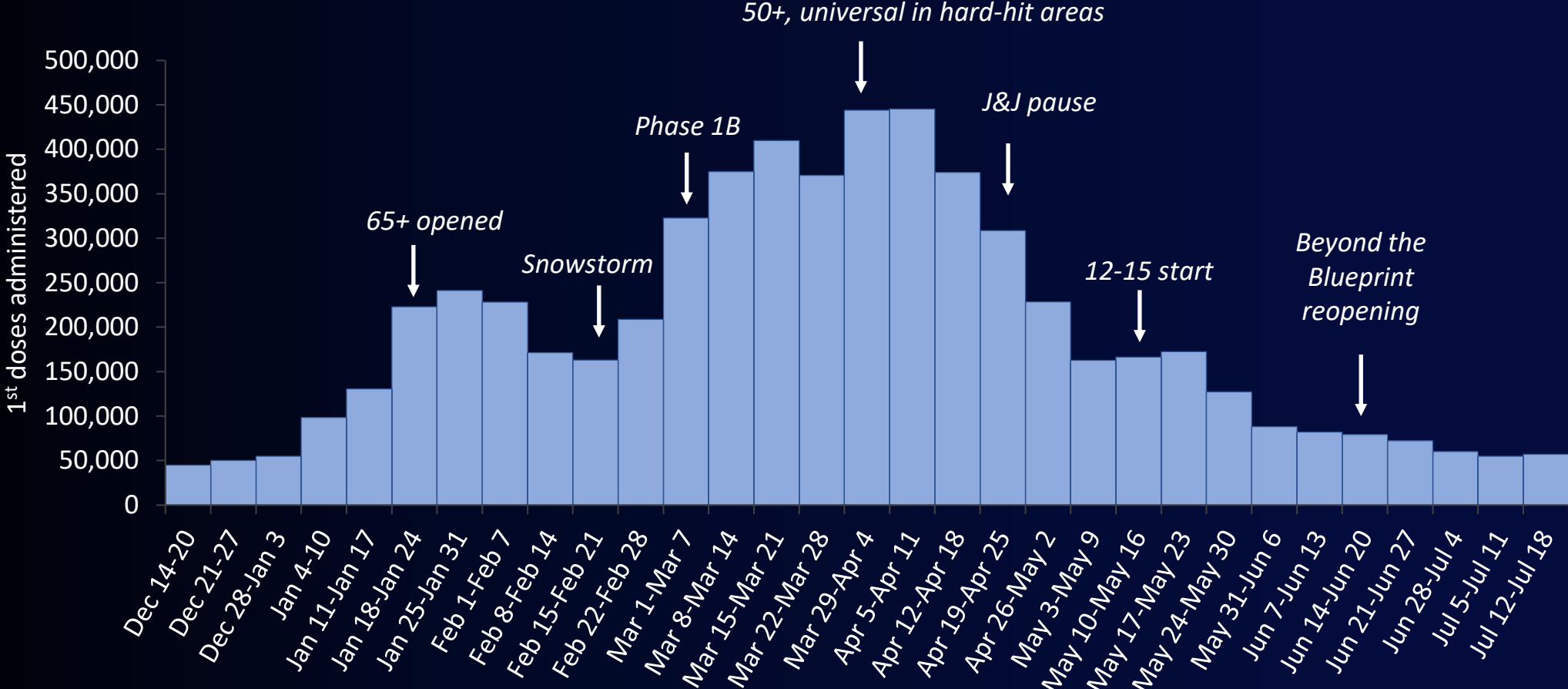
# Proportion of LAC Residents with $\geq 1$ Dose by Age Group

<b>% LAC Residents 65+ with <math>\geq 1</math> Dose</b>	<b>88% (1,211,417)</b>
<b>% LAC Residents 16+ with <math>\geq 1</math> Dose</b>	<b>70% (5,835,102)</b>
<b>% LAC Residents 12+ with <math>\geq 1</math> Dose</b>	<b>69% (6,052,087)</b>
<b>% LAC Residents* with <math>\geq 1</math> Dose</b>	<b>59%</b>

\*Out of 10,260,237 eligible and non-eligible residents , including Pasadena and Long Beach



# First Doses Administered Weekly Among All Eligible Persons



← COVID-19 surge →



[covid19.lacounty.gov](https://covid19.lacounty.gov)

7/22/2021

# Where Can We Close Vaccination Gaps?

## Percent of LA County Residents With 1 Dose of Vaccine by Age and Race/Ethnicity as of July 18th, 2021

	12-15	16-17	18-29	30-49	50-64	65-79	80+	Total (in 16+s)
Black/African American	22	29	29	40	54	69	62	46%
Latinx	31	44	44	52	67	81	61	55%
American Indian/Alaska Native*	47	55	62	69	59	70	66	64%
White	48	60	60	64	62	83	73	66%
Asian	74	83	77	74	75	85	68	77%
<b>Total</b>	<b>43%</b>	<b>57%</b>	<b>58%</b>	<b>67%</b>	<b>75%</b>	<b>92%</b>	<b>78%</b>	

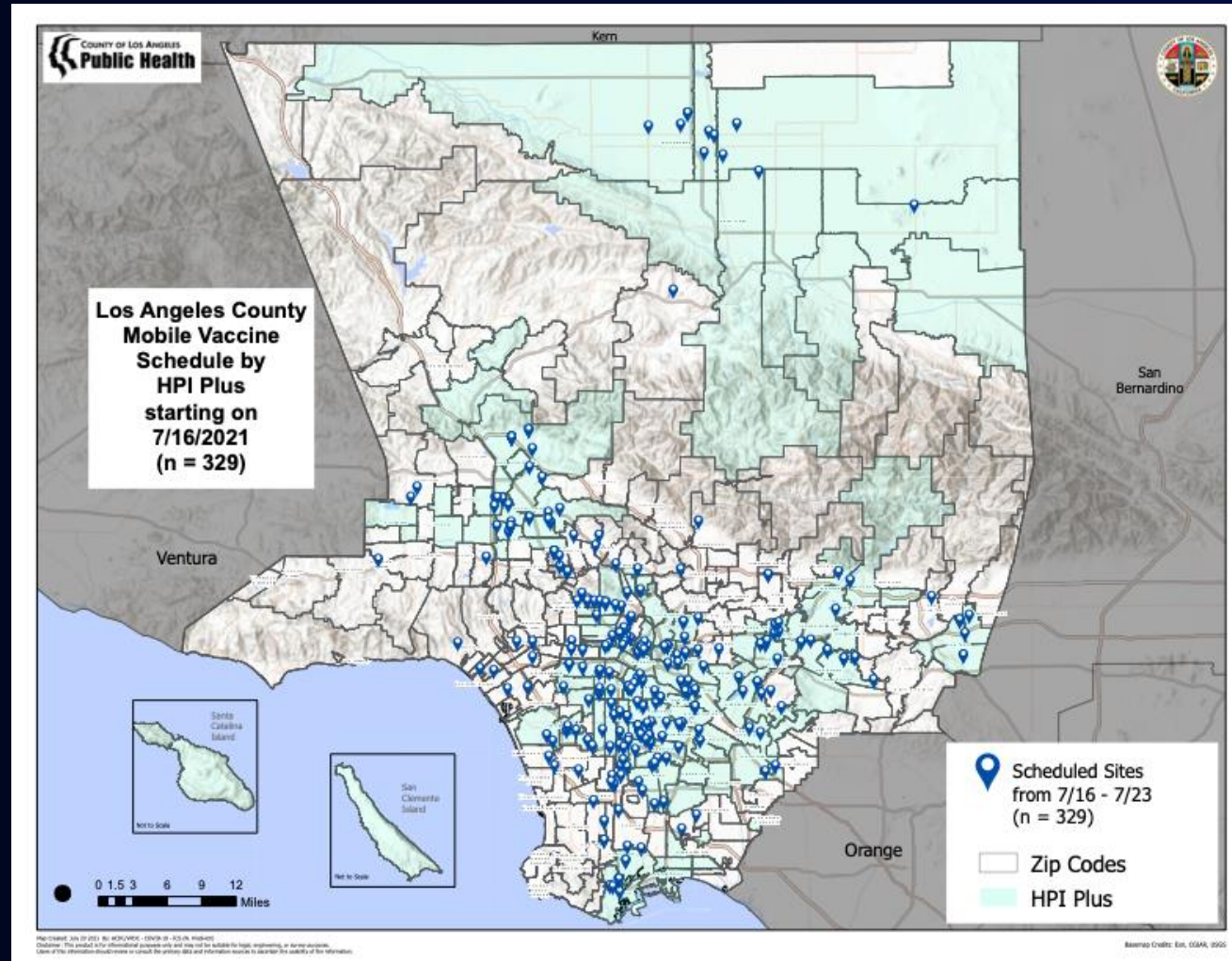
\*Likely an overestimate due to inclusion of multiracial people







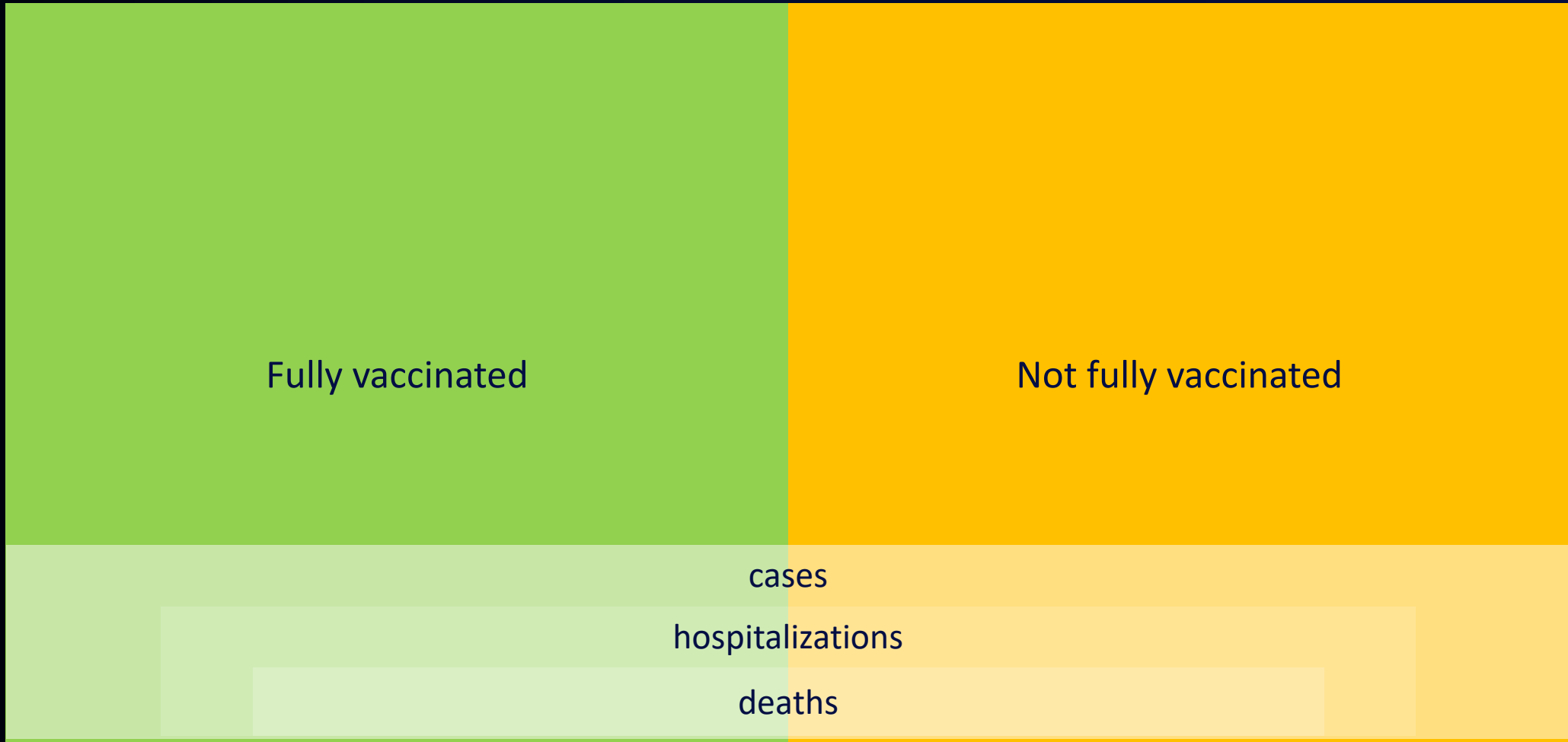
# Mobile Vaccine Units in LA County



[covid19.lacounty.gov](https://covid19.lacounty.gov)

7/22/2021

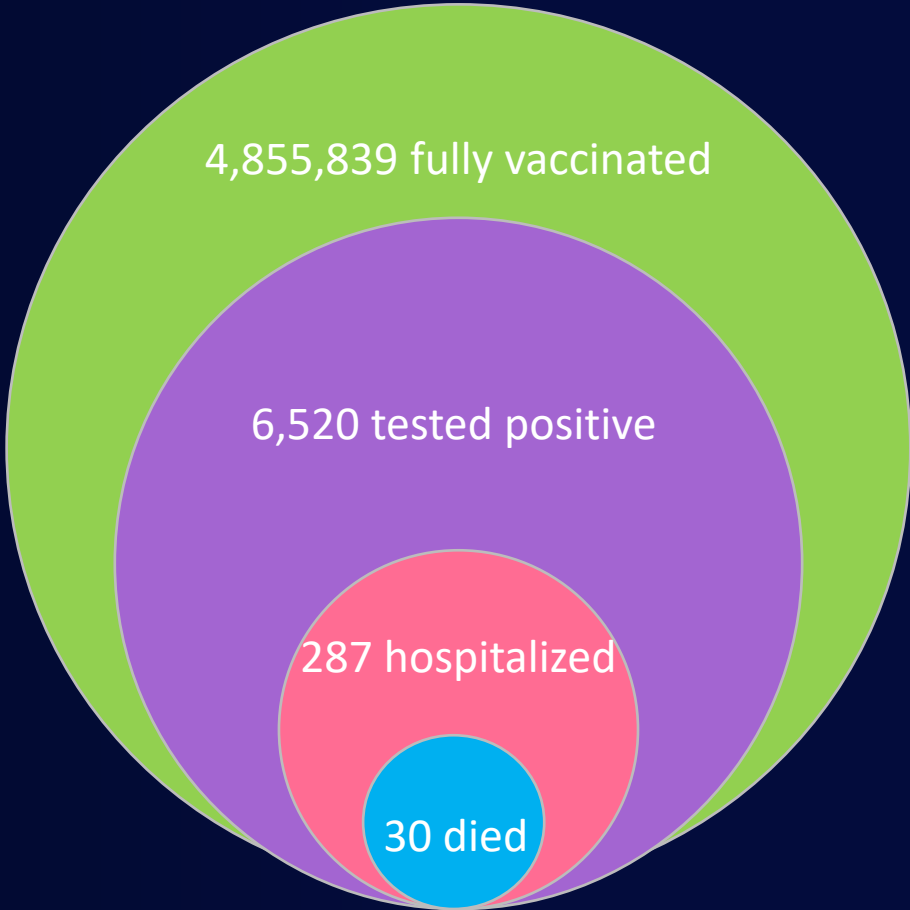
# How We Slice the Data



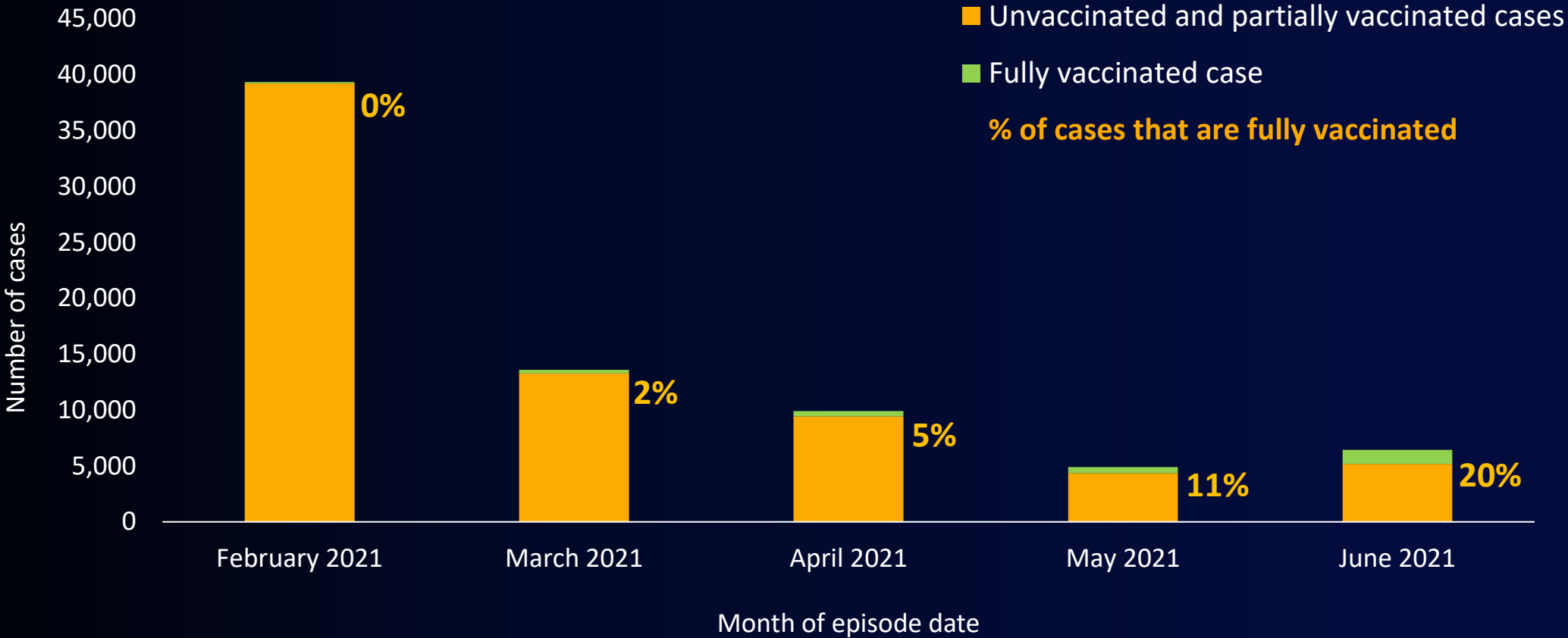
# Covid Among Fully Vaccinated People in LAC From January 19 – July 20, 2021

Of fully vaccinated people:

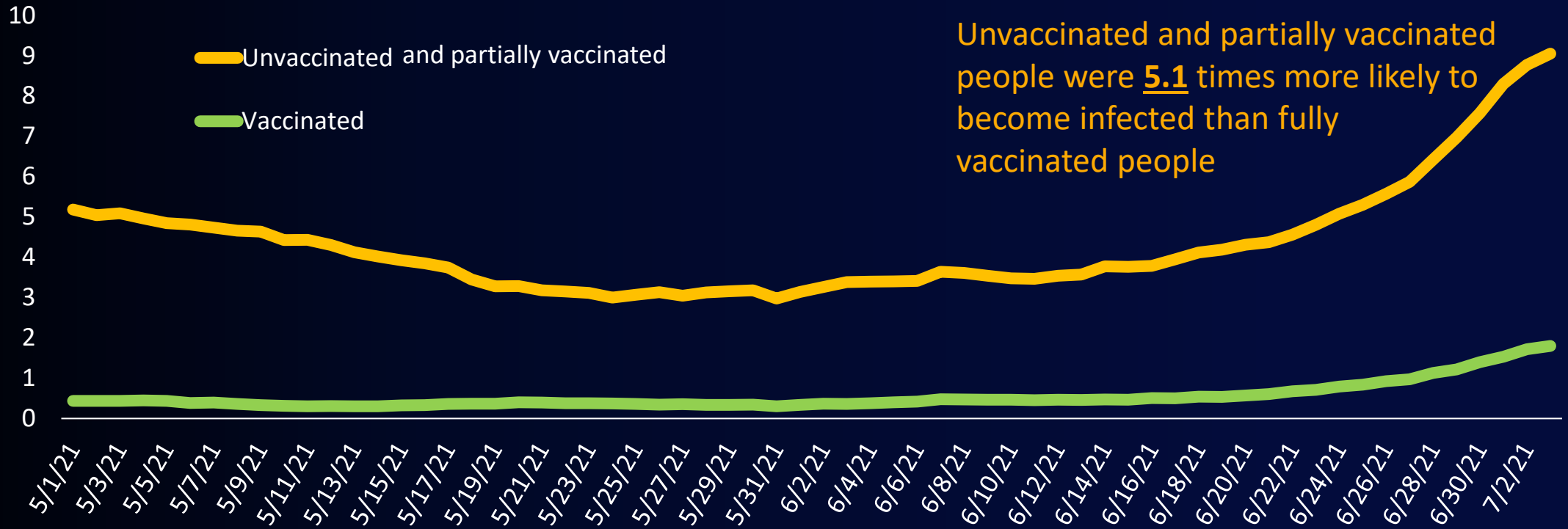
- 0.13% tested positive
- 0.0059% hospitalized for Covid
- 0.0006% died



# COVID-19 Cases Among LAC Residents 16+ by Month and Vaccination Status February 1 – June 30, 2021



# Case Rate\* per 100,000 for Los Angeles County Residents\*\* by Vaccination Status, 05/01/2021 - 07/10/2021



\*Rolling 7-Day average daily crude case rate

\*\*Excluding Long Beach and Pasadena



[covid19.lacounty.gov](https://covid19.lacounty.gov)

7/22/2021

# Monthly Rates per 100,000 by Vaccination Status Among LAC Residents June 1 – June 30, 2021

Status	Infections	Hospitalizations	Deaths
Fully vaccinated	27	2	0.1
Not fully vaccinated	125	11	0.9



# Why Wear a Mask?



[covid19.lacounty.gov](https://covid19.lacounty.gov)

7/22/2021

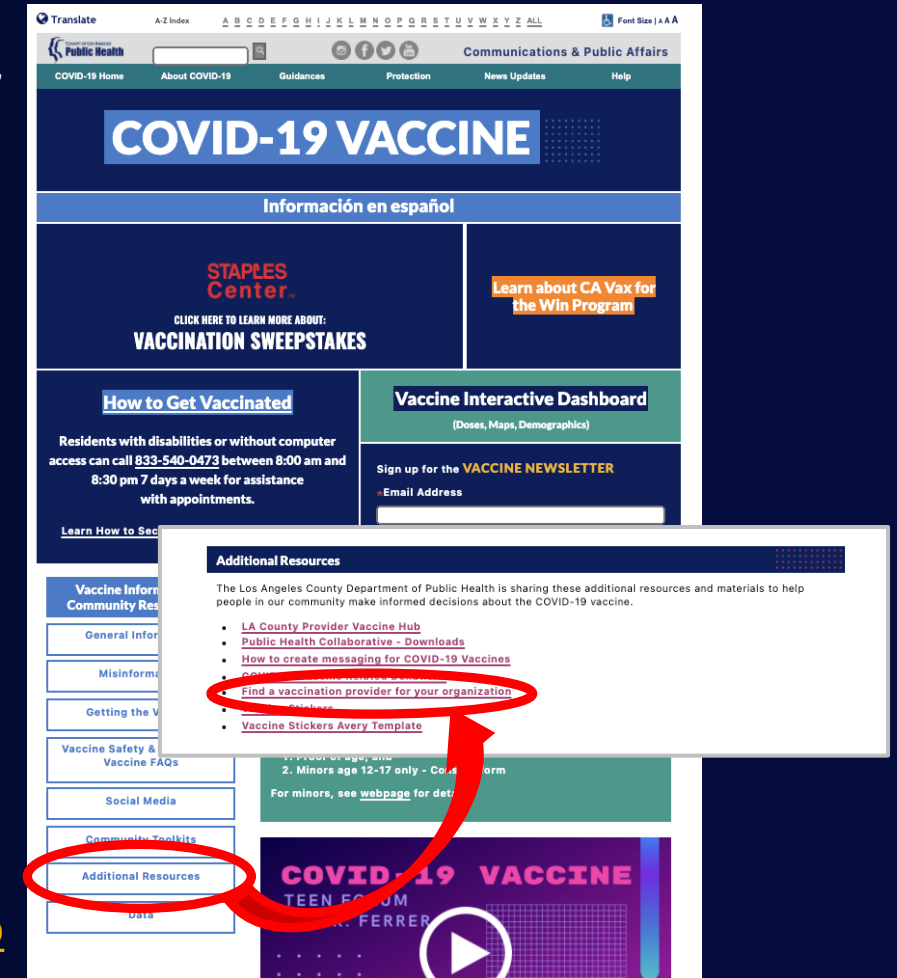
# Getting Back to Slowing Transmission: What We Can Do

Wear masks in indoors public settings, regardless of vaccination status, including:

- Stadium concourses
- Events at hotels or in event halls
- Houses of worship
- At private gatherings where unvaccinated or immunocompromised people are present

Encourage more people to get vaccinated:

- Increase the number of 12-17-year-olds in LAC that are vaccinated; currently only 39% have received 1 dose
- Sponsor a clinic at your worksite, house of worship, or community event; to request a mobile clinic, go to <http://ph.lacounty.gov/acd/ncorona2019/vaccine/providerfinder/>
- Get questions answered at: <http://publichealth.lacounty.gov/media/Coronavirus/vaccine/resources.htm#Misinformation>



[covid19.lacounty.gov](http://covid19.lacounty.gov)

7/22/2021



# To Thank You for Getting Vaccinated



**Machine Gun Kelly**

**SG Lewis**

**Neck Deep**

**Chicano Batman**

**Yung Bae**

**Marc Rebillet**

**Noah Cyrus**

**Adam Melchor**

**Tennis**

**TOPS**

**The Aces**

**Asknikko**

**Blu DeTiger**

**Caroline Polacheck**

**Alaina Castillo**

**Dayglow**

**The Hunna**

**Caribou**

**Duke Dumont**

**Dabin**

- Enter the sweepstakes to win entrance to one of 7 packages of concert tickets
  - 1st and 2<sup>nd</sup>-dose recipients
- Enter the sweepstakes by getting your vaccine between this Friday and next Thursday at:
  - LA County sites
  - LA City sites
  - St. John's Well Child and Family Center sites
  - More sites to come
- Go to [VaccinateLACounty.com](https://VaccinateLACounty.com) to find a location near you
- **THANK YOU TO AEG AND ALL OUR VACCINATION PARTNERS!**



**[covid19.lacounty.gov](https://covid19.lacounty.gov)**

**7/22/2021**