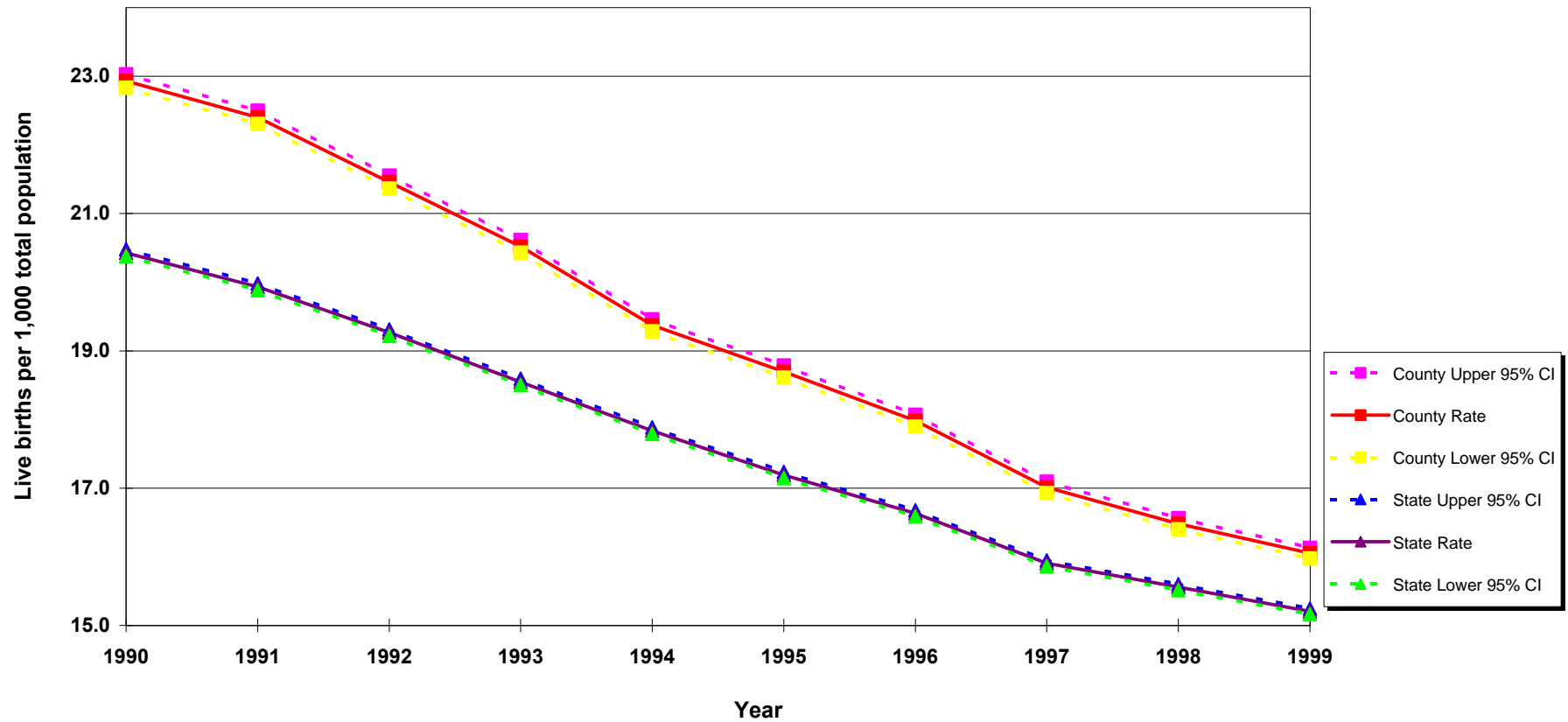


Live Births per 1,000 Total Population California vs. Los Angeles County, 1990 - 1999



Source: 1990-1999 birth records from California Department of Health Services, Center for Health Statistics
 Denominator data: State of California, Department of Finance, Race/Ethnic Population Estimates with Age and Sex Details, 1970-2040, Sacramento, California, December, 1998