



COUNTY OF LOS ANGELES

**Public Health**

HIV Epidemiology Program

# 2010 ANNUAL HIV SURVEILLANCE REPORT



©2009 photography  
by Judy Tejero

**January 2011**

Cases Reported as of December 31, 2010

**HIV EPIDEMIOLOGY PROGRAM**

600 S. Commonwealth Avenue, Suite 1920

Los Angeles, CA 90005

Phone: (213) 351-8196

Fax: (213) 487-9386

<http://publichealth.lacounty.gov/hiv/>

**JONATHAN E. FIELDING, M.D., M.P.H.**  
Director and Health Officer

**JONATHAN E. FREEDMAN**  
Chief Deputy Director

313 North Figueroa Street, Room 806  
Los Angeles, California 90012  
TEL (213) 240-8117 • FAX (213) 975-1273

## HIV Epidemiology Program

March 1, 2011

**Douglas Frye, M.D., M.P.H.**, Director  
600 South Commonwealth Avenue, Suite 1920  
Los Angeles, California 90005  
TEL (213) 351-8196 • FAX (213) 487-9386

<http://publichealth.lacounty.gov/hiv>

### BOARD OF SUPERVISORS

**Gloria Molina**  
First District

**Mark Ridley-Thomas**  
Second District  
Second District

**Zev Yaroslavsky**  
Third District

**Don Knabe**  
Fourth District

**Michael D. Antonovich**  
Fifth District

Dear Colleague:

Enclosed you will find the 2011 issue of the *HIV Annual Surveillance Summary* for L.A. County. The new title reflects two changes to the report: it will now be produced once per year; and it will, for the first time since named non-AIDS HIV reporting began in 2006, present statistics on annual diagnoses of *all* HIV infections, reported by name in the year 2007. The term *diagnosis of HIV* infection refers to a diagnosis of HIV infection regardless of the person's AIDS status at the time of diagnosis. The database is not yet mature enough to present trends in HIV case reporting and using the data in this way would likely result in drawing erroneous conclusions. Because of this, we have also included tables and figures, including trend data, in the report that represent AIDS only data.

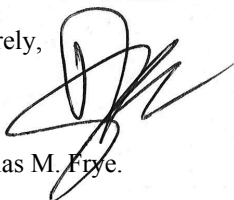
As of December 31, 2011, 75,114 persons have been reported with HIV (including AIDS), of whom 42,364 are now living with HIV. Unlike for previous reports, this total does *not* include the 3,785 cases that were *reported by code* that we have been unable to report by name. The total also does not include a backlog of some 5,200 cases for which we have a laboratory test indicating HIV, but that have yet to be investigated to determine if it indeed represents a newly reported case. Until such time as we can assure that the HIV registry is complete and representative of HIV cases in Los Angeles County, these data will not be made available for more detailed analysis. Also, since we have engaged in extensive nationwide de-duplication efforts with other counties and states in the last year, the increase in numbers and rates of HIV and AIDS presented here will be smaller than one might expect from last year's report.

Since the last issue, one year ago, the HIV surveillance has undergone extensive changes. These include: On page 1 we present a Commentary of the report, with a summary and highlights of findings that may be found in the tables and figures of the report. Section 1 presents tables and figures for diagnosed HIV, Section 2 presents non-AIDS cases of HIV (which some use as a surrogate of more recently acquired HIV infection) while Section 3 presents AIDS only cases. While Figure 1 still presents the trend of AIDS only cases reported since 1986, Figures 2 and 3, and Table 1, have added information on all HIV cases, not just AIDS.

Now you may choose to receive the Annual Summary either by mail (hard copy) or by e-mail (electronic version). Please visit our program web site at <http://publichealth.lacounty.gov/hiv/>, click the link "Subscribe to the Mailing List" and complete the subscription form. Your personal information will be kept confidential and secure in our system. We will deliver the next semi-annual summary to you based on your choice. Alternatively, you can fill out a subscription form (see insert) and return it to us by fax.

HIV case report forms are available for you to download at: <http://publichealth.lacounty.gov/hiv/hivreporting.htm>. Because of severe penalties outlined in HIV reporting law for breaches in patient confidentiality, we strongly suggest you *not* email or fax laboratory reports of HIV results to us. Instead, please mail in reports a double-envelope to: 600 S. Commonwealth Ave., Suite 1260, Los Angeles, CA 90005, or report by phone at: (213) 351-8516. Data presented here, and other HIV information, are available at our Web site. Data requests can be made by phone or through our Web site.

Sincerely,



Douglas M. Frye.

## Annual Surveillance Summary Highlights

Please note: This is the first time the *Surveillance Summary* report has provided such extensive non-AIDS HIV data. Because the reporting system is still maturing, due to reporting delays and a backlog of cases to investigate, much of the data presented in the report is preliminary. While we highlight here some findings from more recent years, some findings highlighted here are for the first complete year of surveillance data, 2007.

Starting from this issue of the *Surveillance Summary*, persons reported with unknown transmission risk were assigned a risk category based on a multiple imputation method (see Technical Notes). Therefore, these estimates by HIV transmission category may differ significantly from actual reported numbers and from previous estimates based on an earlier methodology.

- Figure 1: The large increase in AIDS *reported* (but not necessarily diagnosed) in 2009 and 2010 were due to a change in the 2008 law that required laboratories to report all CD4 antibody counts. AIDS is nearly always diagnosed in persons living with HIV for having a CD4 count less than 200.
- Table 2: Appears that, among cumulative cases of HIV reported in LA County, that a higher percentage of male and female Latinos and American Indian/Alaskan Natives are diagnosed with HIV before the age of 30 than for other race/ethnicities.
- Table 5: Since 2006, all diagnoses of HIV among cases under 13 had as their risk factor “perinatal exposure”, compared with only 71% of pediatric cases prior to 2006.
- Table 6: Over one-third (34%) of all HIV cases diagnosed in 2007 in LA County reported living in Central and Hollywood-Wilshire Health Districts at time of diagnosis, while another 8% were living in the City of Long Beach.

- Table 7: In 2007, the City of West Hollywood and the Hollywood, Wholesale (home of the County's Men's Central Jail) and Downtown areas of Los Angeles had the highest rates of HIV diagnosis, at 173, 167, 57 and 53 diagnoses per 100,000 population, respectively.
- Table 9: Among case of HIV diagnosed in 2007, Blacks living in Service Planning Area (Metro SPA) had nearly 2-1/2 times the rate of new diagnoses per 100,000 population (311) than did Whites living in SPA 4 (127) and nearly four times the rate as the SPA average (80).
- Table 10: As of December 31, 2010, women accounted for 20% of all Blacks living with HIV in LA County, but they accounted for only 13% of Latino and 5% of White cases.
- Table 11: Persons 50 years of age and over accounted for over one third (35%) of all persons living with HIV in LA County by the end of 2010.
- Figure 8: The proportion of annual HIV diagnoses for persons reporting a risk factor of injection drug use and heterosexual contact have leveled off In the last 15 years; but since 2000, the proportion of county HIV diagnoses has increased among men who report having sex with men as their risk factor.
- Figure 9: Over nine in ten (93%) males living with HIV in LA County reported a risk factor of having sex with men, while nearly three in four (73%) females living with HIV in LA County were in heterosexual contact transmission category.

**NOTICE TO HEALTH CARE PROVIDERS AND OTHERS RESPONSIBLE FOR DISEASE REPORTING:**

California Code of Regulations, Title 17, Section 2500 requires that all diagnosed or suspected cases of AIDS as defined by CDC must be reported within seven (7) days to the Health Officer. California Code of Regulations, Title 17, Section 2600/2641.5-2643.20 require both health care providers and laboratories to report HIV cases by name to the Health Officer within seven (7) days. In addition, Senate Bill (SB) 1184 requires each clinical laboratory to report all CD4+ T-cell tests to the local health officer within seven (7) days of the completion of a CD4+ T-cell test. To obtain more information on the HIV/AIDS reporting requirement, obtain case report forms, or report a case, please visit our web site: <http://publichealth.lacounty.gov/hiv/hivreporting.htm>, or contact the HIV Epidemiology Program, 600 South Commonwealth Avenue, Suite 1260, Los Angeles, CA 90005. Phone (213) 351-8516; Fax (213) 487-4683.

The *HIV Surveillance Report* is published annually by the HIV Epidemiology Program, Los Angeles County Department of Public Health. Copies of this report are available free of charge. Individuals or organizations may complete the subscription form by visiting our program web site at <http://publichealth.lacounty.gov/hiv/> to be added to the mailing list. An electronic copy of this report is also available at our web site at <http://publichealth.lacounty.gov/hiv/>.

Suggested Citation: HIV Epidemiology Program, Los Angeles County Department of Public Health. 2010 Annual HIV Surveillance Report, January 2011: 1-32.

Los Angeles County Department of Public Health ..... Jonathan E. Fielding, M.D, M.P.H.  
Director and Health Officer

Communicable Disease Control and Prevention ..... Robert Kim-Farley, M.D., M.P.H.  
Director

HIV Epidemiology Program ..... Douglas Frye, M.D., M.P.H.  
Director

Data Analysis Unit ..... Virginia Hu, M.P.H.  
Chief, Supervising Epidemiologist  
Zhijuan Sheng, M.S.  
Epidemiologist

Data Acquisition Unit..... Latonya Taylor, R.N., M.S.N./M.P.H.,C.N.S.  
Chief, Assistant Program Specialist

# CONTENTS

---

<b>Commentary</b> .....	1
<b>HIV/AIDS diagnoses, deaths, and persons living with HIV/AIDS, Los Angeles County, California, and the United States</b> .....	3
<b>Section 1 Diagnoses of HIV Infection</b>	
Figure 2 Annual diagnoses of AIDS and HIV infection and deaths of persons with HIV infection, Los Angeles County, 1991-2010 .....	4
Figure 3 Persons living with HIV infection and AIDS by year, Los Angeles County, 1991-2010 .....	5
Table 1 Diagnoses, deaths, and persons living with a diagnosis of HIV infection and AIDS by year, reported by December 31, 2010, Los Angeles County .....	5
Table 2 Cumulative HIV/AIDS diagnoses by gender, age, and race/ethnicity, reported by December 31, 2010, Los Angeles County .....	6
Table 3 Cumulative HIV/AIDS diagnoses among adults/adolescents by gender, transmission category, and race/ethnicity, reported by December 31, 2010, Los Angeles County .....	7
Table 4 Cumulative HIV/AIDS diagnoses among children <13 years of age by transmission category, and race/ethnicity, reported by December 31, 2010, Los Angeles County .....	8
Table 5 HIV/AIDS diagnoses among children <13 years of age by race/ethnicity, transmission category, and year of HIV diagnosis, reported by December 31, 2010, Los Angeles County .....	8
Table 6 HIV/AIDS diagnoses and rates per 100,000 by service planning area/health district of residence, and year of HIV diagnosis, reported by December 31, 2010, Los Angeles County .....	9
Table 7 HIV/AIDS diagnoses and rates per 100,000 by year of HIV diagnosis and city/area of residence, top 35 cities ranked by 2009 rate, reported by December 31, 2010, Los Angeles County .....	10
Table 8 HIV/AIDS diagnoses in 2007, persons living with HIV/AIDS, and cumulative by gender, age, race/ethnicity and transmission category, reported by December 31, 2010, Los Angeles County ..	11
Table 9 New HIV/AIDS diagnoses in 2007 and rates per 100,000 by gender, age, race/ethnicity, transmission category, and service planning area (SPA), reported by December 31, 2010, Los Angeles County .....	12
Table 10 Persons living with HIV/AIDS as of December 31, 2010 by race/ethnicity, gender, age, transmission category, and service planning area (SPA), reported by December 31, 2010, Los Angeles County .....	13
Table 11 Persons living with HIV/AIDS and rates per 100,000 as of December 31, 2010 by service planning area (SPA), gender, age, race/ethnicity and transmission category, reported by December 31, 2010, Los Angeles County .....	14
Table 12 Cumulative HIV/AIDS diagnoses by gender, age, race/ethnicity, transmission category, and service planning area (SPA), reported by December 31, 2010, Los Angeles County .....	15
Figure 8 Diagnoses of HIV (Incl. AIDS) among adults/adolescents by transmission category and year of HIV diagnosis, Los Angeles County, 1992-2010 .....	27
Figure 9 Transmission category for persons living with HIV/AIDS as of December 31, 2010 by gender in Los Angeles County .....	27

Figure10	Persons living with a diagnosis of HIV infection as of December 31, 2010 and rate per 100,000 by service planning area (SPA) in Los Angeles County.....	28
Figure 11	New HIV diagnoses in 2007-2009 by zip code and service planning area (SPA) in Los Angeles County.....	Inside Back Cover
Figure12	Persons living with a diagnosis of HIV infection as of December 31, 2010 by zip code and service planning area (SPA) in Los Angeles County.....	Back Cover

**Section 2 Diagnoses of non-AIDS HIV**

Table 13	Persons living with non-AIDS HIV and rates per 100,000 as of December 31, 2010 by service planning area (SPA), gender, age, race/ethnicity and transmission category, Los Angeles County.	16
----------	---	----

**Section 3 Diagnoses of AIDS**

Figure 1	Annual number of AIDS diagnoses and AIDS reports in 1986-2010, Los Angeles County.....	4
Table 14	AIDS diagnoses and rates per 100,000 by gender, year of diagnosis, and race/ethnicity, reported by December 31, 2010, Los Angeles County .....	17
Table 15	AIDS diagnoses among adults/adolescents and rates per 100,000 by gender, year of diagnosis, and race/ethnicity, reported by December 31, 2010, Los Angeles County .....	18
Table 16	AIDS diagnoses by gender, transmission category, and year of diagnosis, reported by December 31, 2010, Los Angeles County.....	19
Table 17	AIDS diagnoses among Whites by gender, transmission category, and year of diagnosis, reported by December 31, 2010, Los Angeles County .....	20
Table 18	AIDS diagnoses among Blacks by gender, transmission category, and year of diagnosis, reported by December 31, 2010, Los Angeles County .....	21
Table 19	AIDS Diagnoses among Hispanics/Latinos by gender, transmission category and year of diagnosis, reported by December 31, 2010, Los Angeles County .....	22
Table 20	Persons living with AIDS and rates per 100,000 at the end of calendar year, by gender, age, race/ethnicity, and transmission category, reported by December 31, 2010, Los Angeles County ..	23
Table 21	Persons living with AIDS and rates per 100,000 as of December 31, 2010 by service planning area (SPA), gender, age, race/ethnicity and transmission category, Los Angeles County.....	24
Figure 4	Male adults/adolescents AIDS rates by race/ethnicity and year of diagnosis, Los Angeles County, 1992-2009 .....	25
Figure 5	Female adults/adolescents AIDS rates by race/ethnicity and year of diagnosis, Los Angeles County, 1992-2009 .....	25
Figure 6	Proportion of AIDS diagnoses among adults/adolescents by race/ethnicity and year of diagnosis, Los Angeles County, 1992-2010 .....	26
Figure 7	Number of AIDS diagnoses among adults/adolescents by race/ethnicity and year of diagnosis, Los Angeles County, 1992-2010 .....	26

Appendix 1	2008 revised surveillance case definitions for human immunodeficiency virus (HIV) infection among adults and adolescents (aged $\geq 13$ years) .....	29
Appendix 2	AIDS-defining conditions .....	30
Appendix 3	Technical notes .....	31

## Commentary

AIDS case surveillance is a core public health activity that began in Los Angeles County (LAC) in 1982. Non-AIDS HIV case surveillance, which also mandates laboratory reporting of confirmatory HIV tests, began in California in July 2002. Between July 2002 and April 16, 2006, 15,275 cases of HIV were reported in LAC using a non-named, coded case reporting system. In April 2006, California law was revised to require the reporting of HIV cases by name rather than by non-named code. By December 31, 2010, 75% of the LAC cases initially reported by code, have been converted to named HIV/AIDS cases. Since 2006, case reports have been submitted using the name-based reporting system, for a total of approximately 16,495 named non-AIDS HIV cases reported in LAC. This report does not include the remaining 3,785 coded HIV reports that have not yet been re-ascertained with name. At the time of this writing, there is also a backlog of over 5,200 laboratory notifications pending investigation to determine if they represent cases of HIV that have not yet been reported. Therefore, the HIV data presented in this report are still preliminary and the use of these data to provide estimates of trends over time is to be discouraged.

### Annual Diagnoses of HIV infection

In LAC, a total of 2,659 persons were reported as diagnosed HIV infection (including those diagnosed with AIDS in 2007 or later) in 2007, the first complete year after the implementation of named HIV reporting in California.

**Gender:** Among persons reported with a new diagnosis of HIV infection in 2007, 344 (13%) were female and 2,315 (87%) were male.

**Age:** About 60% of new HIV diagnoses were 20-39 years of age, followed by persons at age 40-49 years (25%) and 50 years or older (13%). Youth at age 13-19 years represented a small portion of new diagnoses in 2007 (3%).

**Race/Ethnicity:** Latinos represented the largest racial/ethnic group (43%), followed by Whites (28%), Blacks (24%), Asian/Pacific Islander (4%), and American Indian/Alaska Native (< 1%). The racial/ethnic distribution of new HIV diagnoses differed by sex. Among females, 42% were Latina, 40% were Black, and 13% were White. Among males, 42% were Latino, 21% were Black, and 30% were White.

**Transmission Category:** The transmission category of HIV infection indicates how HIV was transmitted – that is, through sexual contact, injecting drugs using an HIV-contaminated needle or syringe (IDU), transmission from mother to child, or by receiving HIV-contaminated blood or blood products.

Because a substantial proportion of persons with HIV infection are reported without an identified risk factor, we use the CDC-recommended multiple imputation methods to assign a risk factor for these cases (see Technical Notes). With this adjustment, we estimate that 79% of 2007 HIV diagnoses were in Men-who-have-sex-with-men (MSM), 12% transmitted through heterosexual contact, 5% were MSM who also injection drugs (MSM/IDU), and 4% were heterosexual injection drug users (see Table 9). These percentages vary among different racial/ethnic groups. For example, heterosexual contact transmission category accounted for 19% of new diagnoses among Blacks and 14% among Latinos, but only 9% and 4% among Asians/Pacific Islanders and whites, respectively.

**Geographic Distribution:** In 1998, 26 health districts in Los Angeles County (LAC) were aggregated into eight Service Planning Areas, or SPAs, in an effort to characterize local health needs regionally. As is seen with other diseases, HIV/AIDS has not affected all areas of the county equally.

The highest rate for HIV diagnosis in 2007 was reported among persons in Metro (80 per 100,000), South (30 per 100,000), and South Bay SPAs (25 per 100,000; Table 6). When broken down to cities and smaller areas, the Wholesale area and the city of West Hollywood had the highest rates of HIV diagnosis in 2007 (329 per 100,000 and 264 per 100,000, respectively) when compared with the rates from other cities and areas – such as Hollywood (90 per 100,000) and Downtown (79 per 100,000; Table 7). One of the possible reasons for a high rate in the Wholesale area was that many of the new diagnoses were reported among the incarcerated persons in the Los Angeles Men's Central Jail, which is situated in Wholesale.

### Persons Living with HIV/AIDS (PLWHA)

Not including the coded HIV reports that had not yet been re-ascertained with name, there were a total of 42,364 persons living with HIV/AIDS (PLWHA) in LAC as of December 31, 2010.

**Gender:** The number of PLWHA in LAC has increased steadily since 2006, when mandatory and named reporting



for non-AIDS/HIV began in LAC (see Table 1). This increase can be seen for both males and females, resulting in approximately 37,000 male, 5,000 female, and 400 transgender PLWHA in LAC by December 31, 2010 (data as of December 31, 2010). Males currently represent about 7 out of 8 (87%) PLWHA in LAC.

**Age:** Over two-thirds (70%) of PLWHA are 40 years or older, the majority of whom are age 40 – 49 years. The median age of PLWHA in LAC is 46 years. Less than 1% of PLWHA are under 20 years of age and 10% are 60 years or older.

**Race/Ethnicity:** As seen in Table 8, 39% of PLWHA in LAC are Latino, 35% White, 21% Black, and 3% Asian/Pacific Islander. Less than 1% of LAC cases are American Indian/Alaska Native. The racial/ethnic distribution of PLWHA differs by sex. Among female PLWHA, 43% are Latina, 37% are Black, and 16% are White. Among male PLWHA, 39% are Latino, 19% are Black, and 38% are White.

**Transmission Category:** Using the multiple imputation methods to adjust for persons with undetermined risk factor for HIV infection (see Technical Notes), we estimate that 76% of PLWHA are MSM, 7% are MSM who also inject drugs (MSM/IDU). Other reported transmission categories include injection drug use (7%) and heterosexual contact (8%; see Table 8).

**Geographic Distribution:** Figure 10 is a map showing the number (in red), percent (in green), and rate per 100,000 population (in blue) of PLWHA reported in LAC by SPA. Persons living with HIV are based on preliminary data collected from April 17, 2006 to December 2010. Metro SPA has the highest number (16,455), proportion (39%), and rate (1,322 per 100,000) of PLWHA among SPAs in the county, followed by South Bay with over 7,000 PLWHA (17%), and a rate of 442 per 100,000. Antelope Valley has the lowest number (534), percent (1%), and rate (145 per 100,000) of PLWHA in LAC.

### Annual Diagnoses of AIDS

Severe HIV Disease is also known as Acquired Immunodeficiency Syndrome, or AIDS. The annual number of AIDS diagnoses in LAC has decreased substantially from a high of approximately 4,131 cases in 1992 to 1,396 cases in 2006 (see Figure 1).

**Gender:** Similarly, AIDS diagnoses among females have also decreased from a high of 356 cases in 1995 to 173

cases in 2008. In 1993, males composed 92% and females 8% of all adult and adolescent AIDS cases in LAC. The proportion of female cases rose to 14% in 2001 and declined slightly to 13% in 2008 (see Table 16).

**Race/ethnicity:** The annual number of AIDS cases decreased for all races/ethnicities in the last 10 years. The most dramatic decreases were among Blacks, whose annual total dropped 38%, from 454 cases in 1999 to 310 cases in 2008. White cases decreased 37%, from 540 in 1999 to 382 in 2008. The number of cases among Latinos decreased 33%, from 763 in 1999 to 514 in 2008, respectively. The number of cases among American Indian and Alaska Natives remained below 10 cases a year without a significant trend. The number of cases among Asian/Pacific Islanders fluctuated between 29 and 54 cases per year in 1999-2008.

In 1992, Whites represented 49% of adults and adolescents diagnosed with AIDS in LAC while Blacks represented 29%, Latinos 20%, and Asian/Pacific Islanders only 2% (see Figure 5). By 2008, however, Latinos composed the largest proportion of annual AIDS cases with 43%, followed by Whites, 29%, Blacks, 24%, and Asian/Pacific Islanders, 4%. Not shown in the figure due to small numbers are American Indians and Alaska Natives who represented <1% of all LAC adults and adolescents diagnosed with AIDS in 1993 and 2006.

**Age:** The introduction of improved HIV treatments beginning in 1996 contributed to a significant delay in the progression of HIV to AIDS for many individuals. Between 1995 (prior to the introduction of more effective HIV treatments) and 2008, the proportion of AIDS cases diagnosed among persons over age 40 years increased 28%. The most dramatic shift, however, occurred among those diagnosed at age 50 years or older, increasing from 12% in 1995 to 18% in 2008.

**Geographic Distribution:** Variations in geographic distribution of AIDS diagnoses among eight SPAs have decreased over the years. In 1995, 40% of AIDS cases were diagnosed among persons in Metro SPA, compared with 9% in South SPA and 7% in South Bay SPA. In 2008, the percentage of AIDS cases for these three SPAs changed to 34%, 13%, and 20%, respectively. The highest rate for persons living with AIDS as of 2010 was in Metro SPA (775 per 100,000), South Bay SPA (294 per 100,000), and South SPA (256 per 100,000)(Table 21).

**HIV/AIDS DIAGNOSES, DEATHS, AND PERSONS LIVING WITH HIV/AIDS  
LOS ANGELES COUNTY, CALIFORNIA, AND THE UNITED STATES**

	Los Angeles County <sup>1</sup>	California <sup>2</sup>	United States <sup>3</sup>
<b>Diagnoses of HIV infection, 2009</b>	2,036	5,172	35,825 <sup>a</sup>
<b>Diagnoses of AIDS, 2009</b>	1,312	3,009	27,100
<b>Persons living with HIV infection, 2010</b>	42,364	111,024	652,294 <sup>b</sup>
<b>Persons living with AIDS, 2010</b>	25,876	70,497	473,683 <sup>c</sup>
<b>Cumulative deaths in persons with HIV infection</b>	32,750	90,229	--
<b>Cumulative deaths in persons with AIDS</b>	32,188	88,844	579,931 <sup>c</sup>
<b>Cumulative diagnoses of HIV infection, 1982-2010</b>	75,114	201,253	--
<b>Cumulative diagnoses of AIDS, 1982-2010</b>	58,064	159,341	1,080,714 <sup>d</sup>

<sup>1</sup> Includes all cases reported to the HIV Epidemiology Program as of December 31, 2010.

<sup>2</sup> California Office of AIDS , HIV/AIDS Surveillance Section. Data reported as of December 31, 2010.

<sup>3</sup> Centers for Disease Control and Prevention. HIV Surveillance Report, Volume 21, 2009.

<http://www.cdc.gov/hiv/surveillance/resources/reports/2009report/pdf/2009SurveillanceReport.pdf>

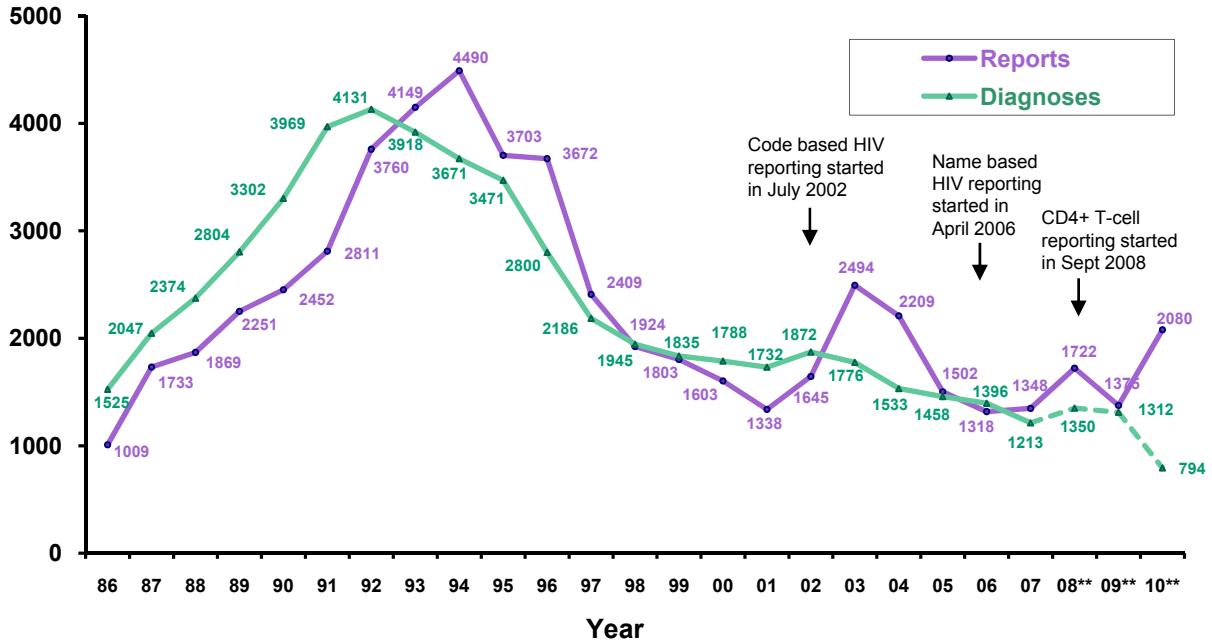
<sup>a</sup>. Diagnoses of HIV infection in 40 states with confidential named-based HIV infection reporting since at least January 2006.

<sup>b</sup>. Persons living with HIV infection as of 2008 in 40 states with confidential named-based HIV infection reporting since at least January 2006.

<sup>c</sup>. Cumulative deaths of person with an AIDS diagnosis and persons living with AIDS as of 2008.

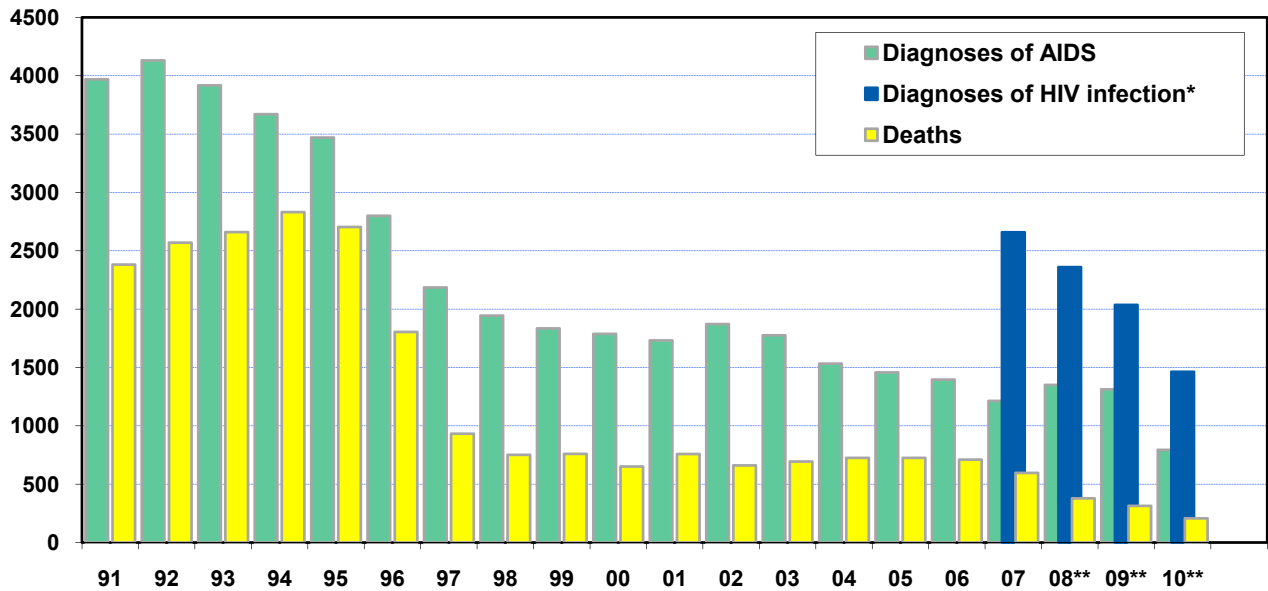
<sup>d</sup>. From the beginning of the epidemic through 2009.

**FIGURE 1. ANNUAL NUMBER OF AIDS DIAGNOSES AND AIDS REPORTS IN 1986-2010, LOS ANGELES COUNTY**



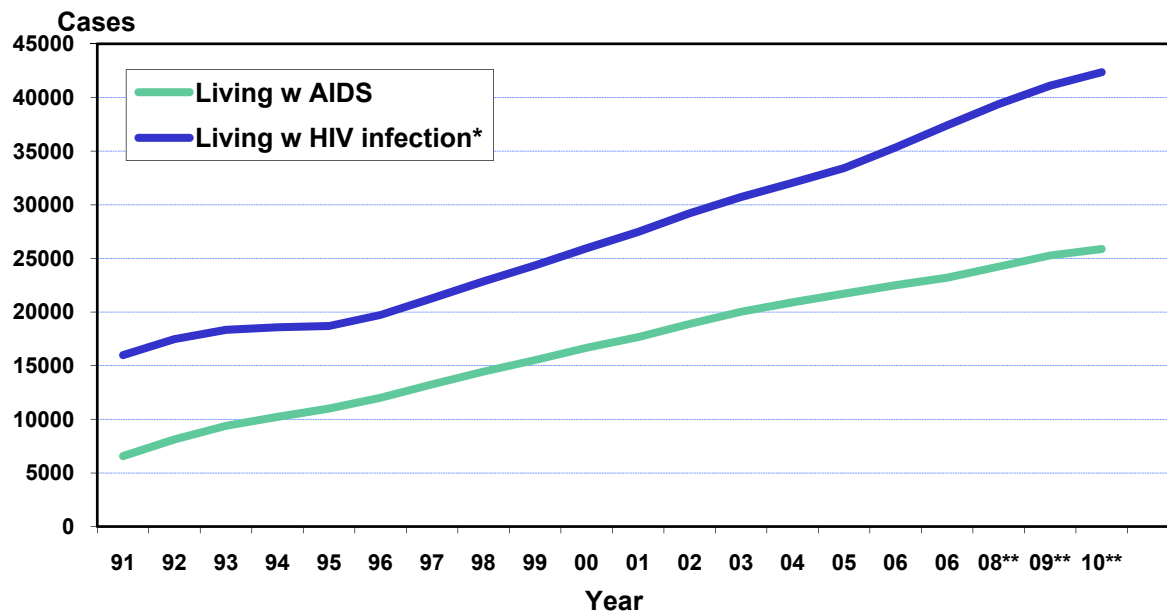
\* Number of cases reported is based on system entry date.  
 \*\* Cases diagnosed in 2008-2010 are provisional due to reporting delay.

**FIGURE 2. ANNUAL DIAGNOSES OF AIDS AND HIV INFECTION AND DEATHS OF PERSONS WITH HIV INFECTION, LOS ANGELES COUNTY, 1991-2010**



\* Data only available since 2007, the first complete year after the implementation of mandatory and named HIV reporting in California. Include both HIV or AIDS cases with an initial HIV diagnosis in the listed year.  
 \*\* Data are provisional for 2008-2010.

**FIGURE 3. PERSONS LIVING WITH HIV INFECTION AND AIDS BY YEAR, LOS ANGELES COUNTY, 1991-2010**



\* Data on persons living with HIV infection in year 2006 or earlier may be incomplete as non-AIDS HIV only became reportable by name in April 17, 2006. However, these numbers include both HIV or AIDS cases.

\*\* Data are provisional for 2008-2010.

**TABLE 1. DIAGNOSES, DEATHS, AND PERSONS LIVING WITH A DIAGNOSIS OF HIV INFECTION AND AIDS BY YEAR, REPORTED BY DECEMBER 31, 2010, LOS ANGELES COUNTY**

Year	Diagnoses of AIDS	Diagnoses of HIV infection <sup>1</sup>	Deaths occurred <sup>2</sup>	Living with AIDS <sup>3</sup>	Living with HIV/AIDS <sup>4</sup>
1982 - 1990	13914		8933	4983	13708
1991	3969		2382	6570	15992
1992	4131		2569	8132	17483
1993	3918		2660	9390	18340
1994	3671		2832	10231	18576
1995	3471		2704	11002	18708
1996	2800		1805	12002	19736
1997	2186		932	13259	21280
1998	1945		752	14453	22867
1999	1835		759	15531	24350
2000	1788		651	16671	25951
2001	1732		758	17658	27469
2002	1872		661	18896	29207
2003	1776		694	20034	30723
2004	1533		726	20908	32051
2005	1458		725	21721	33418
2006	1396		710	22500	35343
2007	1213	2659	597	23210	37405
2008 (5)	1350	2360	379	24241	39386
2009 (5)	1312	2036	314	25275	41108
2010 (5)	794	1463	207	25876	42364
Cumulative	58064		32750		

1. Data include persons with a diagnosis of HIV infection regardless of the disease stage at time of diagnosis.

2. The number of deaths among persons of HIV infection is based on the date of death report when the actual year of death is unknown.

3. Includes persons living with AIDS at the end of each year.

4. Include persons living with HIV/AIDS at the end of each year.

5. Data are provisional due to reporting delay.

TABLE 2. CUMULATIVE HIV/AIDS DIAGNOSES BY GENDER, AGE, AND RACE/ETHNICITY  
 REPORTED BY DECEMBER 31, 2010  
 LOS ANGELES COUNTY

Age at Diagnosis (years)	Race/Ethnicity					
	White No. (%)	Black No. (%)	Hispanic/Latino No. (%)	Asian/PI (1) No. (%)	AI/AN (2) No. (%)	Total (3) No. (%)
<b>MALE</b>						
<13	55 (<1)	87 ( 1)	122 ( 1)	5 (<1)	<5 ( -)	276 (<1)
13-19	216 ( 1)	295 ( 2)	454 ( 2)	21 ( 1)	9 ( 3)	1005 ( 1)
20-29	5648 ( 19)	3166 ( 25)	6961 ( 31)	383 ( 23)	90 ( 34)	16434 ( 24)
30-39	12626 ( 42)	4982 ( 39)	9088 ( 40)	683 ( 41)	94 ( 35)	27766 ( 41)
40-49	7671 ( 26)	3027 ( 24)	4184 ( 19)	400 ( 24)	50 ( 19)	15506 ( 23)
50-59	2733 ( 9)	1007 ( 8)	1301 ( 6)	126 ( 8)	14 ( 5)	5235 ( 8)
60+	866 ( 3)	280 ( 2)	421 ( 2)	30 ( 2)	<5 ( -)	1616 ( 2)
Male subtotal	29815	12844	22531	1648	265	67838
[% of subtotal]	[ 44]	[ 19]	[ 33]	[ 2]	[ <1]	[100]
<b>FEMALE</b>						
<13	31 ( 2)	77 ( 3)	121 ( 4)	7 ( 4)	<5 ( -)	238 ( 3)
13-19	39 ( 3)	102 ( 4)	137 ( 5)	<5 ( -)	<5 ( -)	283 ( 4)
20-29	314 ( 23)	665 ( 24)	877 ( 30)	33 ( 18)	13 ( 30)	1923 ( 26)
30-39	467 ( 34)	924 ( 34)	887 ( 31)	66 ( 36)	10 ( 23)	2376 ( 33)
40-49	291 ( 21)	627 ( 23)	490 ( 17)	43 ( 23)	16 ( 37)	1482 ( 20)
50-59	130 ( 10)	266 ( 10)	276 ( 10)	23 ( 13)	<5 ( -)	702 ( 10)
60+	88 ( 6)	67 ( 2)	107 ( 4)	9 ( 5)	<5 ( -)	272 ( 4)
Female subtotal	1360	2728	2895	184	43	7276
[% of subtotal]	[ 19]	[ 37]	[ 40]	[ 3]	[ 1]	[100]
<b>BOTH</b>						
<13	86 (<1)	164 ( 1)	243 ( 1)	12 ( 1)	<5 ( -)	514 ( 1)
13-19	255 ( 1)	397 ( 3)	591 ( 2)	24 ( 1)	10 ( 3)	1288 ( 2)
20-29	5962 ( 19)	3831 ( 25)	7838 ( 31)	416 ( 23)	103 ( 33)	18357 ( 24)
30-39	13093 ( 42)	5906 ( 38)	9975 ( 39)	749 ( 41)	104 ( 34)	30142 ( 40)
40-49	7962 ( 26)	3654 ( 23)	4674 ( 18)	443 ( 24)	66 ( 21)	16988 ( 23)
50-59	2863 ( 9)	1273 ( 8)	1577 ( 6)	149 ( 8)	17 ( 6)	5937 ( 8)
60+	954 ( 3)	347 ( 2)	528 ( 2)	39 ( 2)	<5 ( -)	1888 ( 3)
Total	31175	15572	25426	1832	308	75114
[% of total]	[ 42]	[ 21]	[ 34]	[ 2]	[ <1]	[100]

1. Includes 15 Burmese, 77 Cambodian, 149 Chinese, 481 Filipino, 16 Guamanian, 37 Hawaiian, 32 Asian Indian, 33 Indonesian, 169 Japanese, 71 Korean, <5 Laotian, 12 Malayan, <5 Bangladeshi, 20 Pacific Islander, 6 East Indian, <5 Pakistani, 34 Samoan, 5 Singaporean, 7 Sri Lankan, <5 Tahitian, 43 Taiwanese, 137 Thai, <5 Tongan, and 142 Vietnamese; 333 are of unknown Asian ethnicity.

2. AI/AN=American Indian/Alaska Native.

3. Total includes persons who have multiple races/ethnicities or have missing information on race/ethnicity.

TABLE 3. CUMULATIVE HIV/AIDS DIAGNOSES AMONG ADULTS/ADOLESCENTS BY GENDER, TRANSMISSION CATEGORY, AND RACE/ETHNICITY  
 REPORTED BY DECEMBER 31, 2010  
 LOS ANGELES COUNTY

Adult/Adolescent Transmission Category (1)	Race/Ethnicity					Total (3) No. (%)
	White No. (%)	Black No. (%)	Hispanic/Latino No. (%)	Asian/PI No. (%)	AI/AN (2) No. (%)	
<b>MALE</b>						
Male-male sexual contact	26054 ( 88)	9862 ( 77)	18960 ( 85)	1501 ( 91)	199 ( 76)	57142 ( 85)
Injection drug user (IDU)	918 ( 3)	1181 ( 9)	1180 ( 5)	26 ( 2)	15 ( 6)	3365 ( 5)
Male-male sexual contact/IDU	2371 ( 8)	1240 ( 10)	1390 ( 6)	55 ( 3)	44 ( 17)	5182 ( 8)
Hemophilia/coagulation disorder	91 (<1)	24 (<1)	39 (<1)	9 ( 1)	<5 ( -)	164 (<1)
Heterosexual contact (4)	202 ( 1)	414 ( 3)	772 ( 3)	37 ( 2)	<5 ( -)	1438 ( 2)
Transfusion recipient	124 (<1)	36 (<1)	68 (<1)	16 ( 1)	<5 ( -)	245 (<1)
Other/Undetermined	<5 ( -)	<5 ( -)	<5 ( -)	<5 ( -)	<5 ( -)	26 (<1)
Male subtotal	29760	12757	22409	1643	261	67562
[% of subtotal]	[ 44]	[ 19]	[ 33]	[ 2]	[ <1]	[100]
<b>FEMALE</b>						
Injection drug user (IDU)	545 ( 41)	854 ( 32)	481 ( 17)	18 ( 10)	18 ( 41)	1941 ( 28)
Hemophilia/coagulation disorder	10 ( 1)	5 (<1)	5 (<1)	<5 ( -)	<5 ( -)	21 (<1)
Heterosexual contact (4)	703 ( 53)	1749 ( 66)	2220 ( 80)	148 ( 84)	24 ( 57)	4876 ( 69)
Transfusion recipient	69 ( 5)	42 ( 2)	67 ( 2)	11 ( 6)	<5 ( -)	190 ( 3)
Perinatal exposure	<5 ( -)	<5 ( -)	<5 ( -)	<5 ( -)	<5 ( -)	<5 ( -)
Other/Undetermined	<5 ( -)	<5 ( -)	<5 ( -)	<5 ( -)	<5 ( -)	8 (<1)
Female subtotal	1329	2651	2774	177	43	7038
[% of subtotal]	[ 19]	[ 38]	[ 39]	[ 3]	[ 1]	[100]
<b>BOTH</b>						
Male-male sexual contact	26054 ( 84)	9862 ( 64)	18960 ( 75)	1501 ( 82)	199 ( 65)	57142 ( 77)
Injection drug user (IDU)	1463 ( 5)	2036 ( 13)	1661 ( 7)	44 ( 2)	33 ( 11)	5305 ( 7)
Male-male sexual contact/IDU	2371 ( 8)	1240 ( 8)	1390 ( 6)	55 ( 3)	44 ( 14)	5182 ( 7)
Hemophilia/coagulation disorder	101 (<1)	29 (<1)	44 (<1)	9 (<1)	<5 ( -)	185 (<1)
Heterosexual contact (4)	905 ( 3)	2162 ( 14)	2993 ( 12)	185 ( 10)	26 ( 9)	6314 ( 8)
Transfusion recipient	193 ( 1)	78 ( 1)	135 ( 1)	27 ( 1)	<5 ( -)	435 ( 1)
Perinatal exposure	<5 ( -)	<5 ( -)	<5 ( -)	<5 ( -)	<5 ( -)	<5 ( -)
Other/Undetermined	<5 ( -)	<5 ( -)	<5 ( -)	<5 ( -)	<5 ( -)	34 (<1)
Total	31089	15408	25183	1820	304	74600
[% of total]	[ 42]	[ 21]	[ 34]	[ 2]	[ <1]	[100]

1. Persons without an identified risk factor are assigned a risk factor using multiple imputation (MI) methods (See technical notes).
2. AI/AN=American Indian/Alaska Native.
3. Total includes persons who have multiple races/ethnicities or have missing information on race/ethnicity.
4. Heterosexual contact with a person who is HIV-infected or at increased risk for HIV.

TABLE 4. CUMULATIVE HIV/AIDS DIAGNOSES AMONG CHILDREN <13 YEARS OF AGE  
BY TRANSMISSION CATEGORY, AND RACE/ETHNICITY  
REPORTED BY DECEMBER 31, 2010  
LOS ANGELES COUNTY

Pediatric (<13 years) Transmission Category (1)	Race/Ethnicity				Total No. (%)
	White No. (%)	Black No. (%)	Hispanic/Latino No. (%)	Other (2) No. (%)	
Hemophilia/coagulation disorder	16 ( 19)	2 ( 1)	11 ( 5)	2 ( 13)	31 ( 6)
Perinatal exposure	41 ( 48)	134 ( 82)	187 ( 77)	7 ( 44)	372 ( 72)
Transfusion recipient	27 ( 31)	25 ( 15)	32 ( 13)	7 ( 44)	93 ( 18)
Other/Undetermined	2 ( 2)	3 ( 2)	13 ( 5)	0 ( 0)	18 ( 4)
<b>Total</b>	<b>86</b>	<b>164</b>	<b>243</b>	<b>16</b>	<b>514</b>
[% of total]	[ 17]	[ 32]	[ 47]	[ 3]	[100]

1. See technical notes for information on transmission category.
2. Other includes Asian, Pacific Islander, American Indian, and Alaskan Native.

TABLE 5. HIV/AIDS DIAGNOSES AMONG CHILDREN <13 YEARS OF AGE  
BY RACE/ETHNICITY, TRANSMISSION CATEGORY, AND YEAR OF HIV DIAGNOSIS  
REPORTED BY DECEMBER 31, 2010  
LOS ANGELES COUNTY

Pediatric (<13 years)	Year of Diagnosis					2010 (1) No. (%)
	Before 2006 No. (%)	2006 (1) No. (%)	2007 (1) No. (%)	2008 (1) No. (%)	2009 (1) No. (%)	
<b>RACE/ETHNICITY</b>						
White	84 ( 17)	1 ( 33)	1 ( 17)	0 ( 0)	0 ( -)	0 ( 0)
Black	158 ( 32)	0 ( 0)	3 ( 50)	1 ( 33)	0 ( -)	2 ( 40)
Hispanic/Latino	236 ( 47)	2 ( 67)	2 ( 33)	1 ( 33)	0 ( -)	2 ( 40)
Other(2)	14 ( 3)	0 ( 0)	0 ( 0)	1 ( 33)	0 ( -)	1 ( 20)
<b>TRANSMISSION CATEGORY (3)</b>						
Hemophilia/coagulation disorder	31 ( 6)	0 ( 0)	0 ( 0)	0 ( 0)	0 ( -)	0 ( 0)
Perinatal exposure	355 ( 71)	3 (100)	6 (100)	3 (100)	0 ( -)	5 (100)
Transfusion recipient	93 ( 19)	0 ( 0)	0 ( 0)	0 ( 0)	0 ( -)	0 ( 0)
Other/Undetermined	18 ( 4)	0 ( 0)	0 ( 0)	0 ( 0)	0 ( -)	0 ( 0)
<b>Total</b>	<b>497</b>	<b>3</b>	<b>6</b>	<b>3</b>	<b>0</b>	<b>5</b>
[% of total]	[ 97]	[ <1]	[ 1]	[ <1]	[ 0]	[ 1]

1. Data are provisional due to reporting delay.
2. Other includes Asian, Pacific Islander, American Indian, and Alaskan Native.
3. See technical notes for information on transmission category.

TABLE 6. HIV/AIDS DIAGNOSES AND RATES (1) PER 100,000  
 BY SERVICE PLANNING AREA/HEALTH DISTRICT OF RESIDENCE, AND YEAR OF HIV DIAGNOSIS  
 REPORTED BY DECEMBER 31, 2010  
 LOS ANGELES COUNTY

Service Planning Area/ Health District	Year of Diagnosis										Cumulative 1982-2010 No. (%)	
	2006		2007		2008 (2)		2009 (2)		2010 (2)			
	No.	(%) Rate	No.	(%) Rate	No.	(%) Rate	No.	(%) Rate	No.	(%) Rate		
Antelope Valley[1]	28	( 1) 8	41	( 2) 11	41	( 2) 11	42	( 2) 11	31	( 2) 8	837	( 1)
Antelope Valley	28	( 1) 8	41	( 2) 11	41	( 2) 11	42	( 2) 11	31	( 2) 8	837	( 1)
San Fernando[2]	346	( 13) 16	379	( 14) 18	329	( 14) 15	271	( 13) 12	158	( 11) 7	10746	( 14)
East Valley	124	( 5) 27	127	( 5) 28	115	( 5) 25	80	( 4) 17	55	( 4) 12	4020	( 5)
Glendale	54	( 2) 15	44	( 2) 12	36	( 2) 10	44	( 2) 12	9	( 1) 3	1611	( 2)
San Fernando	31	( 1) 7	45	( 2) 10	43	( 2) 9	32	( 2) 7	28	( 2) 6	1053	( 1)
West Valley	137	( 5) 16	163	( 6) 18	135	( 6) 15	115	( 6) 13	66	( 5) 7	4062	( 5)
San Gabriel[3]	177	( 7) 9	221	( 8) 12	181	( 8) 10	153	( 8) 8	109	( 7) 6	5396	( 7)
Alhambra	26	( 1) 7	25	( 1) 7	23	( 1) 6	20	( 1) 6	19	( 1) 5	888	( 1)
El Monte	53	( 2) 11	52	( 2) 11	42	( 2) 9	37	( 2) 8	29	( 2) 6	1248	( 2)
Foothill	24	( 1) 8	40	( 2) 13	25	( 1) 8	29	( 1) 9	15	( 1) 5	892	( 1)
Pasadena	19	( 1) 13	29	( 1) 20	34	( 1) 23	24	( 1) 16	12	( 1) 8	925	( 1)
Pomona	55	( 2) 10	75	( 3) 13	57	( 2) 10	43	( 2) 7	34	( 2) 6	1443	( 2)
Metro[4]	1010	( 38) 80	1007	( 38) 80	879	( 37) 70	761	( 37) 61	570	( 39) 46	29569	( 39)
Central	422	( 16) 114	409	( 15) 111	403	( 17) 110	327	( 16) 89	201	( 14) 55	9353	( 12)
Hollywood-Wilshire	496	( 19) 92	506	( 19) 94	400	( 17) 75	353	( 17) 66	319	( 22) 60	17124	( 23)
Northeast	92	( 3) 26	92	( 3) 26	76	( 3) 22	81	( 4) 23	50	( 3) 14	3092	( 4)
West[5]	125	( 5) 20	128	( 5) 20	99	( 4) 15	74	( 4) 11	68	( 5) 10	4312	( 6)
West	125	( 5) 20	128	( 5) 20	99	( 4) 15	74	( 4) 11	68	( 5) 10	4312	( 6)
South[6]	337	( 13) 32	311	( 12) 30	308	( 13) 29	265	( 13) 25	166	( 11) 16	7754	( 10)
Compton	49	( 2) 17	71	( 3) 24	60	( 3) 21	42	( 2) 15	36	( 2) 12	1344	( 2)
South	61	( 2) 32	57	( 2) 31	64	( 3) 34	53	( 3) 27	22	( 2) 11	1354	( 2)
Southeast	57	( 2) 32	45	( 2) 25	47	( 2) 26	47	( 2) 25	25	( 2) 13	1149	( 2)
Southwest	170	( 6) 45	138	( 5) 36	137	( 6) 36	123	( 6) 32	83	( 6) 22	3907	( 5)
East[7]	158	( 6) 11	172	( 6) 12	164	( 7) 12	137	( 7) 10	113	( 8) 8	4474	( 6)
Bellflower	34	( 1) 9	37	( 1) 10	34	( 1) 9	27	( 1) 7	29	( 2) 8	930	( 1)
East Los Angeles	36	( 1) 16	23	( 1) 10	28	( 1) 13	29	( 1) 13	17	( 1) 8	963	( 1)
San Antonio	53	( 2) 12	68	( 3) 15	57	( 2) 13	56	( 3) 12	45	( 3) 10	1607	( 2)
Whittier	35	( 1) 10	44	( 2) 13	45	( 2) 13	25	( 1) 7	22	( 2) 7	974	( 1)
South Bay[8]	449	( 17) 28	396	( 15) 25	355	( 15) 22	330	( 16) 20	246	( 17) 15	11833	( 16)
Harbor	48	( 2) 23	38	( 1) 18	17	( 1) 8	18	( 1) 8	22	( 2) 10	737	( 1)
Inglewood	113	( 4) 26	106	( 4) 24	93	( 4) 21	75	( 4) 17	65	( 4) 15	2351	( 3)
Long Beach	252	( 10) 51	208	( 8) 42	209	( 9) 42	197	( 10) 40	132	( 9) 27	7441	( 10)
Torrance	36	( 1) 8	44	( 2) 9	36	( 2) 8	40	( 2) 8	27	( 2) 6	1304	( 2)
<b>Total (3)</b>	<b>2635</b>	<b>(100) 26</b>	<b>2659</b>	<b>(100) 26</b>	<b>2360</b>	<b>(100) 23</b>	<b>2036</b>	<b>(100) 20</b>	<b>1463</b>	<b>(100) 14</b>	<b>75114</b>	<b>(100)</b>

1. Rates are based on population estimates from 2006-2009. Rates for 2010 are calculated using population estimates for 2009. Rates based on observations fewer than 20 may not be reliable (see technical notes).
2. Data are provisional due to reporting delay.
3. Total includes persons with no information on Service Planning Area/Health District.



TABLE 7. HIV/AIDS DIAGNOSES AND RATES PER 100,000 (1,2) BY YEAR OF HIV DIAGNOSIS AND CITY/AREA (3) OF RESIDENCE  
TOP 35 CITIES (4) RANKED BY 2009 RATE  
REPORTED BY DECEMBER 31, 2010  
LOS ANGELES COUNTY

City/Area	Year of Diagnosis					Cumulative 1982-2010 No.
	2006 No. (Rate)	2007 No. (Rate)	2008 (1) No. (Rate)	2009 (1) No. (Rate)	2010 (1) No. (Rate)	
West Hollywood	97 (259.3)	99 (264.4)	84 (223.7)	68 (180.7)	65 (172.7)	4087
Wholesale (5)	203 (342.4)	196 (329.1)	198 (335.8)	167 (285.1)	98 (167.3)	2310
Hollywood	220 ( 88.8)	223 ( 90.3)	184 ( 77.1)	190 ( 82.2)	132 ( 57.1)	7467
Downtown	26 (114.1)	18 ( 78.7)	34 (143.0)	19 ( 77.1)	13 ( 52.8)	545
Miracle Mile N	25 ( 58.4)	22 ( 50.4)	24 ( 52.9)	18 ( 38.3)	15 ( 31.9)	905
Miracle Mile S	22 ( 44.6)	24 ( 48.2)	25 ( 49.3)	8 ( 15.5)	16 ( 31.0)	861
Crenshaw	41 ( 56.5)	33 ( 45.2)	31 ( 42.9)	26 ( 36.3)	22 ( 30.7)	917
Slvlke-chinatn	49 ( 57.1)	64 ( 75.2)	49 ( 57.9)	41 ( 48.5)	23 ( 27.2)	2149
Vermont Square	37 ( 48.2)	31 ( 40.0)	21 ( 27.2)	30 ( 38.9)	17 ( 22.0)	620
Wilshir Ctr N	26 ( 30.1)	25 ( 28.9)	23 ( 26.6)	26 ( 30.0)	19 ( 21.9)	725
Westmont-w Aths	14 ( 35.3)	23 ( 58.1)	11 ( 28.9)	5 ( 13.6)	8 ( 21.8)	279
Long Beach	220 ( 44.6)	179 ( 36.2)	180 ( 36.4)	173 ( 34.9)	107 ( 21.6)	4472
Boyle Heights	31 ( 30.8)	35 ( 34.8)	29 ( 30.1)	22 ( 23.8)	19 ( 20.5)	612
Westlake	51 ( 37.7)	43 ( 31.7)	42 ( 31.1)	32 ( 23.8)	25 ( 18.6)	970
Willowbrook	8 ( 20.0)	9 ( 22.4)	18 ( 46.2)	9 ( 23.7)	7 ( 18.4)	226
Wilshir Ctr S	25 ( 24.8)	35 ( 35.1)	13 ( 13.1)	26 ( 26.4)	17 ( 17.3)	604
Adams-la Brea	24 ( 41.3)	29 ( 49.4)	14 ( 24.0)	17 ( 29.3)	10 ( 17.2)	534
S Vermont	35 ( 31.6)	36 ( 32.1)	36 ( 32.5)	37 ( 33.8)	18 ( 16.4)	864
Gardena	13 ( 20.9)	8 ( 12.8)	7 ( 11.3)	12 ( 19.3)	10 ( 16.1)	210
Studio City	18 ( 34.8)	17 ( 32.2)	17 ( 31.1)	13 ( 23.1)	9 ( 16.0)	935
Lincoln Hts	10 ( 19.7)	9 ( 17.6)	7 ( 13.8)	13 ( 25.7)	8 ( 15.8)	278
N Hollywood	44 ( 32.8)	53 ( 39.8)	47 ( 34.9)	32 ( 23.5)	21 ( 15.4)	1551
W Adms-expo Pk	45 ( 33.4)	35 ( 25.6)	47 ( 34.2)	33 ( 24.0)	20 ( 14.5)	914
Huntington Park	<5 ( - )	9 ( 13.9)	5 ( 7.7)	10 ( 15.5)	9 ( 13.9)	134
Inglewood	27 ( 22.8)	32 ( 26.9)	38 ( 31.9)	32 ( 26.9)	16 ( 13.4)	742
Eagle Rk-glasl	20 ( 26.0)	15 ( 19.2)	12 ( 15.2)	15 ( 18.7)	10 ( 12.4)	788
Florence	5 ( 11.7)	<5 ( - )	<5 ( - )	5 ( 11.6)	5 ( 11.6)	166
Compton	12 ( 12.7)	32 ( 33.6)	11 ( 11.6)	13 ( 13.7)	10 ( 10.6)	330
V Nys-sher Oks	56 ( 27.1)	47 ( 22.6)	50 ( 23.5)	41 ( 18.9)	21 ( 9.7)	1224
Hawthorne	21 ( 22.7)	17 ( 18.3)	19 ( 20.3)	12 ( 12.8)	9 ( 9.6)	301
Lynwood	<5 ( - )	11 ( 14.9)	13 ( 17.5)	10 ( 13.5)	7 ( 9.4)	177
Bellflower	7 ( 9.1)	12 ( 15.6)	<5 ( - )	8 ( 10.3)	7 ( 9.1)	118
Downey	8 ( 7.1)	16 ( 14.1)	16 ( 14.1)	16 ( 14.1)	10 ( 8.8)	292
Pico Rivera	11 ( 16.1)	6 ( 8.8)	10 ( 14.6)	7 ( 10.2)	6 ( 8.7)	219
San Pedro	33 ( 42.8)	21 ( 26.9)	9 ( 11.4)	8 ( 10.0)	7 ( 8.7)	344

1. Data are provisional due to reporting delay.
2. Rates are based on population estimates for 2006-2009. Rates for 2010 are calculated using population estimates for 2009. Rates based on observations fewer than 20 may not be reliable (see technical notes).
3. The city of Los Angeles is broken down into "areas" or geographic units with more than 15,000 residents. Cities and areas are approximately defined by aggregating the associated census tracts based on the location of their centroid.
4. Includes cities and areas that had more than 15,000 residents and at least 5 persons diagnosed with HIV/AIDS in 2009.
5. Includes persons diagnosed with HIV/AIDS during incarceration at Los Angeles County Central Jail.

TABLE 8. HIV/AIDS DIAGNOSES IN 2007, PERSONS LIVING WITH HIV/AIDS, AND CUMULATIVE BY GENDER, AGE, RACE/ETHNICITY AND TRANSMISSION CATEGORY REPORTED BY DECEMBER 31, 2010, LOS ANGELES COUNTY

	Male			Female			Total								
	Year 2007(1)		Living(1)	Year 2007(1)		Living(1)	Year 2007(1)		Living(1)	Cumulative(1)					
	No. (%)	Rate	No. (%)	Rate	No. (%)	Rate	No. (%)	Rate	No. (%)						
<b>AGE GROUP (2)</b>															
<13	<5 ( -)	-	24 (<1)	2	276 (<1)	<5 ( -)	-	19 (<1)	2	238 ( 3)	6 (<1)	<1	43 (<1)	2	514 ( 1)
13-19	50 ( 2)	9	118 (<1)	21	1005 ( 1)	17 ( 5)	3	89 ( 2)	17	283 ( 4)	67 ( 3)	6	207 (<1)	19	1288 ( 2)
20-29	670 ( 29)	89	2855 ( 8)	380	16434 ( 24)	94 ( 27)	13	431 ( 9)	61	1923 ( 26)	764 ( 29)	52	3286 ( 8)	225	18357 ( 24)
30-39	728 ( 31)	91	6793 ( 18)	852	27766 ( 41)	95 ( 28)	12	1094 ( 22)	142	2376 ( 33)	823 ( 31)	52	7887 ( 19)	503	30142 ( 40)
40-49	592 ( 26)	76	14446 ( 39)	1860	15506 ( 23)	72 ( 21)	9	1693 ( 34)	220	1482 ( 20)	664 ( 25)	43	16139 ( 38)	1043	16988 ( 23)
50-59	217 ( 9)	37	9641 ( 26)	1665	5235 ( 8)	46 ( 13)	7	1118 ( 23)	180	702 ( 10)	263 ( 10)	22	10759 ( 25)	896	5937 ( 8)
60+	55 ( 2)	9	3544 ( 9)	557	1616 ( 2)	17 ( 5)	2	499 ( 10)	60	272 ( 4)	72 ( 3)	5	4043 ( 10)	275	1888 ( 3)
<b>RACE/ETHNICITY</b>															
White	691 ( 30)	45	14068 ( 38)	910	29815 ( 44)	45 ( 13)	3	776 ( 16)	50	1360 ( 19)	736 ( 28)	24	14844 ( 35)	477	31175 ( 42)
Black	495 ( 21)	113	7168 ( 19)	1633	12844 ( 19)	139 ( 40)	28	1809 ( 37)	359	2728 ( 37)	634 ( 24)	67	8977 ( 21)	952	15572 ( 21)
Hispanic/Latino	987 ( 43)	40	14522 ( 39)	590	22531 ( 33)	144 ( 42)	6	2144 ( 43)	89	2895 ( 40)	1131 ( 43)	23	16666 ( 39)	342	25426 ( 34)
Asian/PI	107 ( 5)	16	1163 ( 3)	178	1648 ( 2)	11 ( 3)	2	139 ( 3)	19	184 ( 3)	118 ( 4)	9	1302 ( 3)	95	1832 ( 2)
AI/AN	5 (<1)	34	149 (<1)	998	265 (<1)	<5 ( -)	-	31 ( 1)	196	43 ( 1)	7 (<1)	23	180 (<1)	586	308 (<1)
<b>TRANSMISSION CATEGORY (3)</b>															
MSM	2103 ( 91)		32175 ( 86)		57142 ( 84)	- ( -)		- ( -)		- ( -)	2103 ( 79)		32175 ( 76)		57142 ( 76)
IDU	63 ( 3)		1365 ( 4)		3365 ( 5)	66 ( 19)		1116 ( 23)		1941 ( 27)	129 ( 5)		2481 ( 6)		5305 ( 7)
MSM/IDU	100 ( 4)		2712 ( 7)		5182 ( 8)	- ( -)		- ( -)		- ( -)	100 ( 4)		2712 ( 6)		5182 ( 7)
Hemophi/Transfusion	<5 ( -)		97 (<1)		491 ( 1)	<5 ( -)		61 ( 1)		253 ( 3)	<5 ( -)		158 (<1)		744 ( 1)
Heterosexual contact	44 ( 2)		913 ( 2)		1438 ( 2)	274 ( 80)		3631 ( 73)		4876 ( 67)	318 ( 12)		4543 ( 11)		6314 ( 8)
Perinatal exposure	<5 ( -)		129 (<1)		182 (<1)	<5 ( -)		123 ( 2)		192 ( 3)	6 (<1)		252 ( 1)		374 (<1)
Other/Undetermined	<5 ( -)		31 (<1)		38 (<1)	<5 ( -)		12 (<1)		14 (<1)	<5 ( -)		43 (<1)		52 (<1)
<b>Total (4)</b>	<b>2315 [ 87]</b>	<b>45</b>	<b>37421 [ 88]</b>	<b>731</b>	<b>67838 [ 90]</b>	<b>344 [ 13]</b>	<b>7</b>	<b>4943 [ 12]</b>	<b>95</b>	<b>7276 [ 10]</b>	<b>2659 [100]</b>	<b>26</b>	<b>42364 [100]</b>	<b>410</b>	<b>75114 [100]</b>

1. Data are provisional due to reporting delay. Rates per 100,000 based on observations fewer than 20 may not be reliable (see technical notes).
2. Age distributions for year 2007 and cumulative cases are based on age at the time of HIV diagnosis while the age distribution for persons living with HIV/AIDS is based on age as of December 31, 2010.
3. Persons without an identified risk factor are assigned a risk factor using multiple imputation (MI) methods (see technical notes). Rate for transmission category is not calculated, because of the lack of denominator data.
4. Percent of total cases that are male and female is shown in this row. Total includes persons who have multiple races/ethnicities or have missing information on race/ethnicity.

TABLE 9. NEW HIV/AIDS DIAGNOSES IN 2007 (1) AND RATES PER 100,000 (1,2) BY GENDER, AGE, RACE/ETHNICITY, TRANSMISSION CATEGORY, AND SERVICE PLANNING AREA (SPA)  
 REPORTED BY DECEMBER 31, 2010, LOS ANGELES COUNTY

Service Planning Area	Antelope Valley No. (%) Rate	San Fernando No. (%) Rate	San Gabriel No. (%) Rate	Metro No. (%) Rate	West No. (%) Rate	South No. (%) Rate	East No. (%) Rate	South Bay/LB No. (%) Rate	Total (3) No. (%) Rate
<b>GENDER (4)</b>									
Male	27 ( 66) 15	332 ( 88) 31	195 ( 88) 21	926 ( 92) 143	117 ( 91) 38	232 ( 75) 45	149 ( 87) 22	333 ( 84) 42	2315 ( 87) 45
Female	14 ( 34) 8	47 ( 12) 4	26 ( 12) 3	81 ( 8) 13	11 ( 9) 3	79 ( 25) 15	23 ( 13) 3	63 ( 16) 8	344 ( 13) 7
<b>AGE GROUP</b>									
<30	13 ( 32) 7	105 ( 28) 12	65 ( 29) 8	299 ( 30) 59	34 ( 27) 16	129 ( 41) 23	69 ( 40) 10	122 ( 31) 18	837 ( 31) 18
30-39	9 ( 22) 23	115 ( 30) 36	62 ( 28) 24	323 ( 32) 134	57 ( 45) 47	78 ( 25) 52	51 ( 30) 25	128 ( 32) 54	823 ( 31) 52
40-49	13 ( 32) 23	105 ( 28) 30	70 ( 32) 26	268 ( 27) 134	23 ( 18) 21	60 ( 19) 46	39 ( 23) 21	84 ( 21) 34	664 ( 25) 43
50+	6 ( 15) 7	54 ( 14) 9	24 ( 11) 5	117 ( 12) 38	14 ( 11) 7	44 ( 14) 22	13 ( 8) 4	62 ( 16) 14	335 ( 13) 13
<b>RACE/ETHNICITY</b>									
White	8 ( 20) 5	128 ( 34) 13	55 ( 25) 12	335 ( 33) 127	66 ( 52) 16	9 ( 3) 37	21 ( 12) 9	112 ( 28) 22	736 ( 28) 24
Black	20 ( 49) 41	57 ( 15) 76	24 ( 11) 28	220 ( 22) 311	21 ( 16) 50	172 ( 55) 51	6 ( 3) 16	114 ( 29) 46	634 ( 24) 67
Hispanic/Latino	13 ( 32) 11	166 ( 44) 20	122 ( 55) 14	397 ( 39) 56	33 ( 26) 29	128 ( 41) 19	130 ( 76) 13	140 ( 35) 23	1131 ( 43) 23
Other (5)	<5 ( -) -	25 ( 7) 11	20 ( 9) 4	41 ( 4) 19	5 ( 4) 6	<5 ( -) -	10 ( 6) 8	23 ( 6) 9	125 ( 5) 9
<b>TRANSMISSION CATEGORY (6)</b>									
MSM	22 ( 53)	296 ( 78)	176 ( 80)	853 ( 85)	106 ( 83)	202 ( 65)	136 ( 79)	308 ( 78)	2103 ( 79)
IDU	5 ( 13)	15 ( 4)	10 ( 4)	37 ( 4)	<5 ( -)	27 ( 9)	8 ( 5)	22 ( 6)	129 ( 5)
MSM/IDU	<5 ( -)	19 ( 5)	7 ( 3)	43 ( 4)	9 ( 7)	7 ( 2)	6 ( 3)	8 ( 2)	100 ( 4)
Hemophi/Transfusion	<5 ( -)	<5 ( -)	<5 ( -)	<5 ( -)	<5 ( -)	<5 ( -)	<5 ( -)	<5 ( -)	<5 ( -)
Heterosexual contact	12 ( 30)	47 ( 12)	28 ( 13)	70 ( 7)	10 ( 8)	72 ( 23)	23 ( 13)	55 ( 14)	318 ( 12)
Perinatal exposure	<5 ( -)	<5 ( -)	<5 ( -)	<5 ( -)	<5 ( -)	<5 ( -)	<5 ( -)	<5 ( -)	6 ( 0)
Other/Undetermined	<5 ( -)	<5 ( -)	<5 ( -)	<5 ( -)	<5 ( -)	<5 ( -)	<5 ( -)	<5 ( -)	<5 ( -)
<b>Total [% of total] (7)</b>	<b>41 [ 2] 11</b>	<b>379 [ 14] 18</b>	<b>221 [ 8] 12</b>	<b>1007 [ 38] 80</b>	<b>128 [ 5] 20</b>	<b>311 [ 12] 30</b>	<b>172 [ 6] 12</b>	<b>396 [ 15] 25</b>	<b>2659 [100] 26</b>

1. Data are provisional due to reporting delay.
2. Rates based on observations fewer than 20 may not be reliable (see technical notes).
3. Total includes persons with no information on SPA.
4. Transgender is not presented here due to small numbers.
5. Other includes Asian, Pacific Islander, American Indian and Alaskan Native.
6. Persons without an identified risk factor are assigned a risk factor using multiple imputation (MI) methods (see technical notes). Rate for transmission category is not calculated, because of the lack of denominator data.
7. Total includes persons who have multiple races/ethnicities or have missing information on race/ethnicity.

TABLE 10. PERSONS LIVING WITH HIV/AIDS (1) AS OF DECEMBER 31, 2010 BY RACE/ETHNICITY, GENDER, AGE, TRANSMISSION CATEGORY, AND SERVICE PLANNING AREA (SPA)  
 REPORTED BY DECEMBER 31, 2010, LOS ANGELES COUNTY

	White			Black			Hispanic/Latino			Other (2)			Total (3)		
	Male	Female	All	Male	Female	All	Male	Female	All	Male	Female	All	Male	Female	All
	No. (%)	No. (%)	No. (%)	No. (%)	No. (%)	No. (%)	No. (%)	No. (%)	No. (%)	No. (%)	No. (%)	No. (%)	No. (%)	No. (%)	No. (%)
<b>AGE GROUP (4)</b>															
<13	<5 ( -)	<5 ( -)	<5 ( -)	9 (<1)	5 (<1)	14 (<1)	11 (<1)	11 ( 1)	22 (<1)	<5 ( -)	<5 ( -)	<5 ( -)	24 (<1)	19 (<1)	43 (<1)
13-19	18 (<1)	7 ( 1)	25 (<1)	46 ( 1)	33 ( 2)	79 ( 1)	52 (<1)	48 ( 2)	100 ( 1)	<5 ( -)	<5 ( -)	<5 ( -)	118 (<1)	89 ( 2)	207 (<1)
20-29	493 ( 4)	35 ( 5)	528 ( 4)	787 (11)	143 ( 8)	930(10)	1419 (10)	236(11)	1655(10)	94 ( 8)	9 ( 6)	103 ( 8)	2855( 8)	431( 9)	3286( 8)
30-39	1635 (12)	110(14)	1745(12)	1117 (16)	391(22)	1508(17)	3642 (25)	533(25)	4175(25)	305 (26)	42(30)	347(27)	6793(18)	1094(22)	7887(19)
40-49	5542 (39)	316(41)	5858(39)	2603 (36)	616(34)	3219(36)	5676 (39)	694(32)	6370(38)	431 (37)	44(32)	475(36)	14446(39)	1693(34)	16139(38)
50-59	4539 (32)	192(25)	4731(32)	1944 (27)	464(26)	2408(27)	2808 (19)	420(20)	3228(19)	238 (20)	26(19)	264(20)	9641(26)	1118(23)	10759(25)
60+	1841 (13)	114(15)	1955(13)	662 ( 9)	157( 9)	819( 9)	914 ( 6)	202( 9)	1116( 7)	92 ( 8)	17(12)	109( 8)	3544( 9)	499(10)	4043(10)
<b>TRANSMISSION CATEGORY (5)</b>															
MSM	12415(88)	- ( -)	12415(84)	5790(81)	- ( -)	5790(64)	12516(86)	- ( -)	12516(75)	1072(92)	- ( -)	1072(82)	32175(86)	- ( -)	32175(76)
IDU	369( 3)	303(39)	672( 5)	419( 6)	480(27)	899(10)	540( 4)	297(14)	837( 5)	18( 2)	13( 9)	31( 2)	1365( 4)	1116(23)	2481( 6)
MSM/IDU	1134( 8)	- ( -)	1134( 8)	650( 9)	- ( -)	650( 7)	830( 6)	- ( -)	830( 5)	37( 3)	- ( -)	37( 3)	2712( 7)	- ( -)	2712( 6)
Hemophi/Transfusion	36(<1)	11( 1)	47(<1)	14(<1)	21( 1)	35(<1)	38(<1)	24( 1)	62(<1)	8( 1)	<5( -)	11( 1)	97(<1)	61( 1)	158(<1)
Heterosexual contact	98( 1)	453(58)	551( 4)	250( 3)	1265(70)	1515(17)	532( 4)	1748(82)	2280(14)	26( 2)	122(88)	148(11)	913( 2)	3631(73)	4543(11)
Perinatal exposure	14(<1)	7( 1)	21(<1)	45( 1)	43( 2)	88( 1)	62(<1)	71( 3)	133( 1)	<5( -)	<5( -)	<5( -)	129(<1)	123( 2)	252( 1)
Other/Undetermined	<5( -)	<5( -)	<5( -)	<5( -)	<5( -)	<5( -)	<5( -)	<5( -)	8(<1)	<5( -)	<5( -)	<5( -)	31(<1)	12(<1)	43(<1)
<b>SERVICE PLANNING AREA</b>															
Antelope Valley[1]	146( 1)	31( 4)	177( 1)	118( 2)	54( 3)	172( 2)	138( 1)	29( 1)	167( 1)	5 (<1)	<5( -)	8( 1)	415( 1)	119( 2)	534( 1)
San Fernando[2]	2389(17)	195(25)	2584(17)	584( 8)	153( 8)	737( 8)	1978(14)	284(13)	2262(14)	178 (15)	16(12)	194(15)	5215(14)	655(13)	5870(14)
San Gabriel[3]	618( 4)	74(10)	692( 5)	298( 4)	108( 6)	406( 5)	1303( 9)	223(10)	1526( 9)	190 (16)	30(22)	220(17)	2442( 7)	441( 9)	2883( 7)
Metro[4]	6599(47)	166(21)	6765(46)	2527(35)	338(19)	2865(32)	5597(39)	530(25)	6127(37)	427 (37)	33(24)	460(35)	15367(41)	1088(22)	16455(39)
West[5]	1277( 9)	74(10)	1351( 9)	300( 4)	66( 4)	366( 4)	449( 3)	45( 2)	494( 3)	67 ( 6)	12( 9)	79( 6)	2134( 6)	200( 4)	2334( 6)
South[6]	140( 1)	22( 3)	162( 1)	1749(24)	596(33)	2345(26)	1427(10)	423(20)	1850(11)	9 ( 1)	<5( -)	13( 1)	3356( 9)	1060(21)	4416(10)
East[7]	327( 2)	38( 5)	365( 2)	125( 2)	47( 3)	172( 2)	1687(12)	321(15)	2008(12)	54 ( 5)	10( 7)	64( 5)	2214( 6)	423( 9)	2637( 6)
South Bay/LB[8]	2541(18)	174(22)	2715(18)	1456(20)	446(25)	1902(21)	1922(13)	287(13)	2209(13)	232 (20)	31(22)	263(20)	6212(17)	952(19)	7164(17)
<b>Total (6)</b>	<b>14068[95]</b>	<b>776[ 5]</b>	<b>14844[100]</b>	<b>7168[80]</b>	<b>1809[20]</b>	<b>8977[100]</b>	<b>14522[87]</b>	<b>2144[13]</b>	<b>16666[100]</b>	<b>1163 [89]</b>	<b>139[11]</b>	<b>1302[100]</b>	<b>37421[88]</b>	<b>4943[12]</b>	<b>42364[100]</b>

1. Data are provisional due to reporting delay.  
 2. Other includes Asian, Pacific Islander, American Indian and Alaskan Native.  
 3. Total includes persons who have multiple races/ethnicities or have missing information on race/ethnicity or SPA.  
 4. Age as of December 31, 2010.  
 5. Persons without an identified risk factor are assigned a risk factor using multiple imputation (MI) methods (see technical notes).  
 6. Percent of total cases that are male and female is shown in this row.

TABLE 11. PERSONS LIVING WITH HIV/AIDS (1) AND RATES PER 100,000 (1,2) AS OF DECEMBER 31, 2010  
 BY SERVICE PLANNING AREA (SPA), GENDER, AGE, RACE/ETHNICITY AND TRANSMISSION CATEGORY  
 REPORTED BY DECEMBER 31, 2010, LOS ANGELES COUNTY

Service Planning Area	Antelope Valley No. (%) Rate	San Fernando No. (%) Rate	San Gabriel No. (%) Rate	Metro No. (%) Rate	West No. (%) Rate	South No. (%) Rate	East No. (%) Rate	South Bay/LB No. (%) Rate	Total (3) No. (%) Rate
<b>GENDER</b>									
Male	411 (77) 222	5155 (88) 467	2420 (84) 262	15180 (92) 2372	2126 (91) 672	3310 (75) 643	2195 (83) 321	6158 (86) 774	37020 (87) 717
Female	118 (22) 64	650 (11) 58	441 (15) 46	1086 ( 7) 180	200 ( 9) 60	1060 (24) 198	421 (16) 60	949 (13) 115	4930 (12) 94
Transgender (4)	5 ( 1) -	65 ( 1) -	22 ( 1) -	189 ( 1) -	8 (<1) -	46 ( 1) -	21 ( 1) -	57 ( 1) -	414 ( 1) -
<b>AGE GROUP (5)</b>									
<13	<5 ( -) -	6 (<1) 2	8 (<1) 2	6 (<1) 3	<5 ( -) -	10 (<1) 4	<5 ( -) -	8 (<1) 3	43 (<1) 2
13-19	<5 ( -) -	19 (<1) 8	17 ( 1) 9	49 (<1) 42	9 (<1) 18	55 ( 1) 40	18 ( 1) 11	36 ( 1) 20	207 (<1) 19
20-29	49 ( 9) 75	436 ( 7) 143	245 ( 8) 87	1034 ( 6) 687	126 ( 5) 189	574 (13) 335	259 (10) 121	558 ( 8) 257	3286 ( 8) 223
30-39	88 (16) 225	1042 (18) 336	565 (20) 220	2985 (18) 1310	352 (15) 306	927 (21) 608	555 (21) 278	1364 (19) 601	7887 (19) 516
40-49	190 (36) 372	2169 (37) 626	1063 (37) 391	6567 (40) 3134	884 (38) 768	1471 (33) 1130	982 (37) 522	2790 (39) 1118	16139 (38) 1034
50-59	148 (28) 325	1547 (26) 530	696 (24) 289	4300 (26) 2977	690 (30) 758	1008 (23) 1064	578 (22) 387	1770 (25) 887	10759 (25) 856
60+	54 (10) 121	651 (11) 185	289 (10) 93	1514 ( 9) 827	271 (12) 211	371 ( 8) 333	243 ( 9) 127	638 ( 9) 252	4043 (10) 257
<b>RACE/ETHNICITY</b>									
White	177 (33) 112	2584 (44) 248	692 (24) 149	6765 (41) 2420	1351 (58) 322	162 ( 4) 621	365 (14) 155	2715 (38) 534	14844 (35) 473
Black	172 (32) 332	737 (13) 954	406 (14) 507	2865 (17) 3960	366 (16) 847	2345 (53) 705	172 ( 7) 461	1902 (27) 763	8977 (21) 951
Hispanic/Latino	167 (31) 118	2262 (39) 264	1526 (53) 178	6127 (37) 894	494 (21) 458	1850 (42) 275	2008 (76) 204	2209 (31) 361	16666 (39) 339
Asian/PI	8 ( 1) 56	194 ( 3) 83	220 ( 8) 46	460 ( 3) 225	79 ( 3) 100	13 (<1) 69	64 ( 2) 52	263 ( 4) 107	1302 ( 3) 94
AI/AN	<5 ( -) -	25 (<1) 421	11 (<1) 241	80 (<1) 2361	13 ( 1) 948	16 (<1) 925	11 (<1) 261	22 (<1) 504	180 (<1) 652
<b>TRANSMISSION CATEGORY (4,6)</b>									
MSM	296 (55)	4498 (77)	2052 (71)	13556 (82)	1889 (81)	2726 (62)	1876 (71)	5227 (73)	32175 (76)
IDU	73 (14)	317 ( 5)	225 ( 8)	642 ( 4)	111 ( 5)	415 ( 9)	184 ( 7)	507 ( 7)	2481 ( 6)
MSM/IDU	49 ( 9)	353 ( 6)	153 ( 5)	1160 ( 7)	132 ( 6)	223 ( 5)	139 ( 5)	497 ( 7)	2712 ( 6)
Hemophi/Transfusion	<5 ( -)	30 ( 1)	21 ( 1)	31 (<1)	12 ( 1)	20 (<1)	19 ( 1)	24 (<1)	158 (<1)
Heterosexual contact	106 (20)	641 (11)	402 (14)	989 ( 6)	172 ( 7)	969 (22)	395 (15)	866 (12)	4543 (11)
Perinatal exposure	6 ( 1)	24 (<1)	26 ( 1)	57 (<1)	15 ( 1)	61 ( 1)	21 ( 1)	42 ( 1)	252 ( 1)
Other/Undetermined	<5 ( -)	6 (<1)	<5 ( -)	20 (<1)	<5 ( -)	<5 ( -)	<5 ( -)	<5 ( -)	43 (<1)
<b>Total [% of total] (7)</b>	<b>534 [ 1]145</b>	<b>5870 [ 14]265</b>	<b>2883 [ 7]153</b>	<b>16455 [ 39]1322</b>	<b>2334 [ 6]358</b>	<b>4416 [ 10]420</b>	<b>2637 [ 6]191</b>	<b>7164 [ 17]442</b>	<b>42364 [100]407</b>

1. Data are provisional due to reporting delay.
2. Rates are based on year 2009 population estimates. Rates that are based on observations fewer than 20 may not be reliable (see technical notes).
3. Total includes persons with no information on SPA.
4. Rates for transgender and transmission category are not calculated, because of the lack of denominator data.
5. Age as of December 31, 2010.
6. Persons without an identified risk factor are assigned a risk factor using multiple imputation (MI) methods (see technical notes).
7. Total includes persons who have multiple races/ethnicities or have missing information on race/ethnicity.

TABLE 12. CUMULATIVE HIV/AIDS DIAGNOSES (1) BY GENDER, AGE, RACE/ETHNICITY, TRANSMISSION CATEGORY, AND SERVICE PLANNING AREA (SPA)  
 REPORTED BY DECEMBER 31, 2010, LOS ANGELES COUNTY

Service Planning Area	Antelope Valley No. (%)	San Fernando No. (%)	San Gabriel No. (%)	Metro No. (%)	West No. (%)	South No. (%)	East No. (%)	South Bay/LB No. (%)	Total (2) No. (%)
<b>GENDER</b>									
Male	669 ( 80)	9722 ( 90)	4675 ( 87)	27721 ( 94)	3995 ( 93)	6108 ( 79)	3843 ( 86)	10433 ( 88)	67348 ( 90)
Female	164 ( 20)	938 ( 9)	694 ( 13)	1605 ( 5)	308 ( 7)	1587 ( 20)	608 ( 14)	1340 ( 11)	7253 ( 10)
Transgender	<5 ( -)	86 ( 1)	27 ( 1)	243 ( 1)	9 (<1)	59 ( 1)	23 ( 1)	60 ( 1)	513 ( 1)
<b>AGE AT DIAGNOSIS</b>									
<13	14 ( 2)	63 ( 1)	62 ( 1)	112 (<1)	25 ( 1)	101 ( 1)	49 ( 1)	87 ( 1)	514 ( 1)
13-19	20 ( 2)	167 ( 2)	85 ( 2)	407 ( 1)	37 ( 1)	244 ( 3)	92 ( 2)	233 ( 2)	1288 ( 2)
20-29	188 ( 22)	2456 ( 23)	1312 ( 24)	7016 ( 24)	912 ( 21)	2117 ( 27)	1263 ( 28)	3042 ( 26)	18357 ( 24)
30-39	324 ( 39)	4231 ( 39)	2080 ( 39)	12397 ( 42)	1846 ( 43)	2726 ( 35)	1700 ( 38)	4758 ( 40)	30142 ( 40)
40-49	188 ( 22)	2577 ( 24)	1218 ( 23)	6827 ( 23)	1005 ( 23)	1689 ( 22)	893 ( 20)	2548 ( 22)	16988 ( 23)
50-59	73 ( 9)	944 ( 9)	449 ( 8)	2209 ( 7)	342 ( 8)	656 ( 8)	340 ( 8)	913 ( 8)	5937 ( 8)
60+	30 ( 4)	308 ( 3)	190 ( 4)	601 ( 2)	145 ( 3)	221 ( 3)	137 ( 3)	252 ( 2)	1888 ( 3)
<b>RACE/ETHNICITY</b>									
White	350 ( 42)	5867 ( 55)	1706 ( 32)	14030 ( 47)	2712 ( 63)	328 ( 4)	826 ( 18)	5250 ( 44)	31175 ( 42)
Black	240 ( 29)	1121 ( 10)	827 ( 15)	4781 ( 16)	624 ( 14)	4702 ( 61)	269 ( 6)	2972 ( 25)	15572 ( 21)
Hispanic/Latino	225 ( 27)	3347 ( 31)	2501 ( 46)	9582 ( 32)	795 ( 18)	2595 ( 33)	3238 ( 72)	3098 ( 26)	25426 ( 34)
Asian/PI	11 ( 1)	259 ( 2)	295 ( 5)	679 ( 2)	106 ( 2)	24 (<1)	93 ( 2)	363 ( 3)	1832 ( 2)
AI/AN	<5 ( -)	37 (<1)	17 (<1)	138 (<1)	21 (<1)	25 (<1)	22 (<1)	45 (<1)	308 (<1)
<b>TRANSMISSION CATEGORY (3)</b>									
MSM	461 ( 55)	8342 ( 78)	3835 ( 71)	24346 ( 82)	3503 ( 81)	4781 ( 62)	3152 ( 70)	8584 ( 73)	57142 ( 76)
IDU	139 ( 17)	686 ( 6)	508 ( 9)	1372 ( 5)	225 ( 5)	945 ( 12)	393 ( 9)	1019 ( 9)	5305 ( 7)
MSM/IDU	70 ( 8)	655 ( 6)	320 ( 6)	2233 ( 8)	253 ( 6)	483 ( 6)	262 ( 6)	883 ( 7)	5182 ( 7)
Hemophi/Transfusion	17 ( 2)	141 ( 1)	94 ( 2)	128 (<1)	59 ( 1)	87 ( 1)	87 ( 2)	127 ( 1)	744 ( 1)
Heterosexual contact	140 ( 17)	874 ( 8)	589 ( 11)	1384 ( 5)	250 ( 6)	1371 ( 18)	545 ( 12)	1154 ( 10)	6314 ( 8)
Perinatal exposure	7 ( 1)	40 (<1)	44 ( 1)	85 (<1)	20 (<1)	84 ( 1)	32 ( 1)	62 ( 1)	374 (<1)
Other/Undetermined	<5 ( -)	8 (<1)	7 (<1)	21 (<1)	<5 ( -)	<5 ( -)	<5 ( -)	<5 ( -)	52 (<1)
<b>Total [% of total] (4)</b>	<b>837 [ 1]</b>	<b>10746 [ 14]</b>	<b>5396 [ 7]</b>	<b>29569 [ 39]</b>	<b>4312 [ 6]</b>	<b>7754 [ 10]</b>	<b>4474 [ 6]</b>	<b>11833 [ 16]</b>	<b>75114 [100]</b>

1. Data are provisional due to reporting delay.
2. Total includes persons with no information on SPA.
3. Persons without an identified risk factor are assigned a risk factor using multiple imputation (MI) methods (see technical notes).
4. Total includes persons who have multiple races/ethnicities or have missing information on race/ethnicity.

TABLE 13. PERSONS LIVING WITH NON-AIDS HIV (1) AND RATES PER 100,000 (2) AS OF DECEMBER 31, 2010  
 BY SERVICE PLANNING AREA (SPA), GENDER, AGE, RACE/ETHNICITY AND TRANSMISSION CATEGORY, LOS ANGELES COUNTY

Service Planning Area	Antelope Valley			San Fernando			San Gabriel			Metro			West			South			East			South Bay/LB			Total (3)		
	No.	(%)	Rate	No.	(%)	Rate	No.	(%)	Rate	No.	(%)	Rate	No.	(%)	Rate	No.	(%)	Rate	No.	(%)	Rate	No.	(%)	Rate	No.	(%)	Rate
<b>GENDER (4)</b>																											
Male	149	(71)	81	1980	(87)	180	877	(84)	95	6029	(92)	942	848	(91)	268	1177	(70)	229	723	(80)	106	1949	(84)	245	13750	(86)	266
Female	58	(28)	32	280	(12)	25	164	(16)	17	445	(7)	74	79	(9)	24	481	(29)	90	169	(19)	24	354	(15)	43	2032	(13)	39
Transgender	<5	(-)	-	25	(1)	<1	7	(1)	<1	88	(1)	<1	<5	(-)	-	17	(1)	<1	9	(1)	<1	19	(1)	<1	167	(1)	<1
<b>AGE GROUP (5)</b>																											
<13	<5	(-)	-	<5	(-)	-	6	(1)	2	<5	(-)	-	<5	(-)	-	10	(1)	4	<5	(-)	-	<5	(-)	-	31	(<1)	2
13-19	<5	(-)	-	12	(1)	5	14	(1)	7	38	(1)	33	7	(1)	14	39	(2)	28	10	(1)	6	24	(1)	14	148	(1)	13
20-29	37	(18)	56	307	(13)	101	167	(16)	59	769	(12)	511	98	(11)	147	399	(24)	233	170	(19)	79	372	(16)	171	2322	(15)	158
30-39	44	(21)	112	535	(23)	173	269	(26)	105	1707	(26)	749	198	(21)	172	443	(26)	290	246	(27)	123	578	(25)	255	4025	(25)	263
40-49	69	(33)	135	792	(35)	229	338	(32)	124	2397	(37)	1144	339	(37)	295	431	(26)	331	287	(32)	153	784	(34)	314	5445	(34)	349
50-59	42	(20)	92	453	(20)	155	183	(17)	76	1297	(20)	898	205	(22)	225	261	(16)	275	141	(16)	94	405	(17)	203	2991	(19)	238
60+	12	(6)	27	182	(8)	52	71	(7)	23	351	(5)	192	78	(8)	61	92	(5)	83	45	(5)	24	156	(7)	62	987	(6)	63
<b>RACE/ETHNICITY</b>																											
White	64	(31)	40	1024	(45)	98	287	(27)	62	2850	(43)	1020	541	(58)	129	67	(4)	257	135	(15)	57	836	(36)	165	5810	(36)	185
Black	74	(35)	143	322	(14)	417	121	(12)	151	1205	(18)	1666	149	(16)	345	933	(56)	280	62	(7)	166	668	(29)	268	3537	(22)	375
Hispanic/Latino	64	(31)	45	821	(36)	96	531	(51)	62	2200	(34)	321	175	(19)	162	652	(39)	97	668	(74)	68	688	(30)	112	5809	(36)	118
Asian/PI	<5	(-)	-	84	(4)	36	94	(9)	20	208	(3)	102	44	(5)	56	7	(<1)	37	26	(3)	21	100	(4)	41	565	(4)	41
AI/AN	<5	(-)	-	7	(<1)	118	<5	(-)	-	33	(1)	974	<5	(-)	-	7	(<1)	405	<5	(-)	-	8	(<1)	183	66	(<1)	239
<b>TRANSMISSION CATEGORY (4,6)</b>																											
MSM	117	(56)		1818	(80)		780	(74)		5616	(86)		782	(84)		1039	(62)		661	(73)		1734	(75)		12563	(79)	
IDU	27	(13)		79	(3)		56	(5)		180	(3)		26	(3)		129	(8)		48	(5)		135	(6)		681	(4)	
MSM/IDU	14	(7)		113	(5)		50	(5)		357	(5)		45	(5)		58	(3)		34	(4)		108	(5)		780	(5)	
Hemophi/Transfusion	<5	(-)		5	(<1)		6	(1)		8	(<1)		<5	(-)		<5	(-)		<5	(-)		5	(<1)		28	(<1)	
Heterosexual contact	44	(21)		254	(11)		137	(13)		355	(5)		62	(7)		413	(25)		143	(16)		318	(14)		1727	(11)	
Perinatal exposure	5	(2)		11	(<1)		18	(2)		29	(<1)		11	(1)		34	(2)		10	(1)		21	(1)		139	(1)	
Other/Undetermined	<5	(-)		6	(<1)		<5	(-)		16	(<1)		<5	(-)		<5	(-)		<5	(-)		<5	(-)		31	(<1)	
<b>Total [% of total] (7)</b>	<b>209</b>	<b>[1]</b>	<b>57</b>	<b>2285</b>	<b>[14]</b>	<b>103</b>	<b>1048</b>	<b>[7]</b>	<b>56</b>	<b>6562</b>	<b>[41]</b>	<b>527</b>	<b>927</b>	<b>[6]</b>	<b>142</b>	<b>1675</b>	<b>[11]</b>	<b>159</b>	<b>901</b>	<b>[6]</b>	<b>65</b>	<b>2322</b>	<b>[15]</b>	<b>143</b>	<b>15949</b>	<b>[100]</b>	<b>153</b>

1. Based on preliminary number of persons reported with HIV by name from April 17, 2006 to December 31, 2010. Coded HIV case not yet re-ascertained with name are not included. Data are provisional due to reporting delay.
2. Rates are based on year 2009 population estimates. Rates that are based on observations fewer than 20 may not be reliable (see technical notes).
3. Total includes persons with no information on SPA.
4. Rates for transgender and transmission category are not calculated, because of the lack of denominator data.
5. Age as of December 31, 2010.
6. Persons without an identified risk factor are assigned a risk factor using multiple imputation (MI) methods (see technical notes).
7. Total includes persons who have multiple races/ethnicities or have missing information on race/ethnicity.

TABLE 14. AIDS DIAGNOSES AND RATES PER 100,000 (1) BY GENDER, YEAR OF DIAGNOSIS, AND RACE/ETHNICITY  
 REPORTED BY DECEMBER 31, 2010  
 LOS ANGELES COUNTY

Year of Diagnosis	Race/Ethnicity					Total (2) No. (Rate)
	White No. (Rate)	Black No. (Rate)	Hispanic/Latino No. (Rate)	Asian No. (Rate)	AI/AN No. (Rate)	
<b>MALE</b>						
2001	459 ( 30)	329 ( 75)	643 ( 29)	42 ( 7)	5 ( 36)	1494 ( 31)
2002	547 ( 35)	328 ( 74)	690 ( 30)	50 ( 8)	8 ( 57)	1638 ( 33)
2003	570 ( 37)	273 ( 62)	644 ( 28)	53 ( 9)	8 ( 55)	1559 ( 31)
2004	419 ( 27)	244 ( 55)	617 ( 26)	50 ( 8)	5 ( 34)	1346 ( 27)
2005	399 ( 26)	265 ( 61)	554 ( 23)	45 ( 7)	<5 ( -)	1274 ( 25)
2006	404 ( 26)	230 ( 53)	526 ( 21)	46 ( 7)	<5 ( -)	1217 ( 24)
2007	302 ( 20)	207 ( 47)	493 ( 20)	43 ( 7)	6 ( 40)	1061 ( 21)
2008 (3)	359 ( 23)	234 ( 53)	505 ( 20)	50 ( 8)	5 ( 36)	1177 ( 23)
2009 (3)	306 ( 20)	238 ( 54)	545 ( 22)	41 ( 6)	<5 ( -)	1146 ( 22)
2010 (3)	163 ( 10)	171 ( 39)	337 ( 14)	20 ( 3)	7 ( 53)	703 ( 14)
<b>Cumulative</b>						
Male subtotal	23897	9818	17357	1138	202	52984
<b>FEMALE</b>						
2001	37 ( 2)	81 ( 16)	107 ( 5)	9 ( 1)	<5 ( -)	238 ( 5)
2002	39 ( 2)	80 ( 16)	104 ( 5)	8 ( 1)	<5 ( -)	234 ( 5)
2003	28 ( 2)	77 ( 15)	105 ( 5)	5 ( 1)	<5 ( -)	217 ( 4)
2004	36 ( 2)	75 ( 15)	68 ( 3)	5 ( 1)	<5 ( -)	187 ( 4)
2005	29 ( 2)	77 ( 15)	70 ( 3)	6 ( 1)	<5 ( -)	184 ( 4)
2006	18 ( 1)	67 ( 13)	85 ( 4)	5 ( 1)	<5 ( -)	179 ( 3)
2007	21 ( 1)	58 ( 12)	64 ( 3)	5 ( 1)	<5 ( -)	152 ( 3)
2008 (3)	23 ( 1)	76 ( 15)	66 ( 3)	7 ( 1)	<5 ( -)	173 ( 3)
2009 (3)	25 ( 2)	65 ( 13)	69 ( 3)	6 ( 1)	<5 ( -)	166 ( 3)
2010 (3)	12 ( 1)	42 ( 8)	35 ( 1)	<5 ( -)	<5 ( -)	91 ( 2)
<b>Cumulative</b>						
Female subtotal	1010	1901	1987	110	31	5080
<b>BOTH</b>						
2001	496 ( 16)	410 ( 43)	750 ( 17)	51 ( 4)	7 ( 25)	1732 ( 18)
2002	586 ( 19)	408 ( 43)	794 ( 18)	58 ( 5)	10 ( 34)	1872 ( 19)
2003	598 ( 19)	350 ( 37)	749 ( 16)	58 ( 4)	10 ( 34)	1776 ( 18)
2004	455 ( 15)	319 ( 34)	685 ( 15)	55 ( 4)	6 ( 20)	1533 ( 15)
2005	428 ( 14)	342 ( 36)	624 ( 13)	51 ( 4)	<5 ( -)	1458 ( 14)
2006	422 ( 14)	297 ( 32)	611 ( 13)	51 ( 4)	6 ( 19)	1396 ( 14)
2007	323 ( 10)	265 ( 28)	557 ( 11)	48 ( 3)	7 ( 23)	1213 ( 12)
2008 (3)	382 ( 12)	310 ( 33)	571 ( 12)	57 ( 4)	5 ( 17)	1350 ( 13)
2009 (3)	331 ( 11)	303 ( 32)	614 ( 12)	47 ( 3)	5 ( 18)	1312 ( 13)
2010 (3)	175 ( 6)	213 ( 23)	372 ( 8)	20 ( 1)	8 ( 29)	794 ( 8)
<b>Cumulative Total</b>						
1982-2010	24907	11719	19344	1248	233	58064

1. Rates are based on population estimates for 2001-2009. Rates for 2010 are calculated using population estimates for 2009. Rates based on observations fewer than 20 may not be reliable (see technical notes).
2. Total includes persons who have multiple races/ethnicities or have missing information on race/ethnicity.
3. Data are provisional due to reporting delay.



TABLE 15. AIDS DIAGNOSES AMONG ADULTS/ADOLESCENTS AND RATES PER 100,000 (1)  
 BY GENDER, YEAR OF DIAGNOSIS, AND RACE/ETHNICITY  
 REPORTED BY DECEMBER 31, 2010  
 LOS ANGELES COUNTY

Year of Diagnosis	Race/Ethnicity					Total (2) No. (Rate)
	White No. (Rate)	Black No. (Rate)	Hispanic/Latino No. (Rate)	Asian No. (Rate)	AI/AN No. (Rate)	
<b>MALE</b>						
2001	459 ( 34)	328 ( 97)	641 ( 40)	42 ( 8)	5 ( 45)	1491 ( 39)
2002	547 ( 41)	326 ( 95)	690 ( 42)	50 ( 10)	8 ( 69)	1636 ( 42)
2003	570 ( 42)	273 ( 79)	644 ( 38)	53 ( 10)	8 ( 67)	1559 ( 40)
2004	419 ( 31)	243 ( 70)	617 ( 35)	49 ( 9)	5 ( 40)	1344 ( 34)
2005	399 ( 30)	265 ( 77)	554 ( 31)	45 ( 8)	<5 ( -)	1274 ( 32)
2006	404 ( 30)	230 ( 67)	526 ( 29)	46 ( 8)	<5 ( -)	1217 ( 30)
2007	302 ( 22)	207 ( 59)	493 ( 27)	43 ( 8)	6 ( 47)	1061 ( 26)
2008 (3)	359 ( 26)	234 ( 66)	505 ( 27)	50 ( 9)	5 ( 41)	1177 ( 28)
2009 (3)	306 ( 22)	238 ( 66)	545 ( 29)	41 ( 7)	<5 ( -)	1146 ( 27)
2010 (3)	163 ( 12)	171 ( 48)	337 ( 18)	19 ( 3)	7 ( 61)	702 ( 17)
<b>Cumulative</b>						
Male subtotal	23872	9768	17297	1134	201	52844
<b>FEMALE</b>						
2001	37 ( 3)	81 ( 20)	106 ( 7)	9 ( 2)	<5 ( -)	237 ( 6)
2002	39 ( 3)	80 ( 19)	103 ( 6)	8 ( 1)	<5 ( -)	233 ( 6)
2003	27 ( 2)	77 ( 19)	105 ( 6)	5 ( 1)	<5 ( -)	216 ( 5)
2004	36 ( 3)	75 ( 18)	68 ( 4)	5 ( 1)	<5 ( -)	187 ( 5)
2005	28 ( 2)	77 ( 19)	69 ( 4)	6 ( 1)	<5 ( -)	182 ( 4)
2006	18 ( 1)	67 ( 16)	85 ( 5)	5 ( 1)	<5 ( -)	179 ( 4)
2007	21 ( 2)	57 ( 14)	64 ( 4)	5 ( 1)	<5 ( -)	151 ( 4)
2008 (3)	23 ( 2)	75 ( 18)	66 ( 4)	7 ( 1)	<5 ( -)	172 ( 4)
2009 (3)	25 ( 2)	65 ( 15)	69 ( 4)	6 ( 1)	<5 ( -)	166 ( 4)
2010 (3)	12 ( 1)	42 ( 10)	35 ( 2)	<5 ( -)	<5 ( -)	91 ( 2)
<b>Cumulative</b>						
Female subtotal	990	1863	1932	107	31	4964
<b>BOTH</b>						
2001	496 ( 18)	409 ( 55)	747 ( 23)	51 ( 5)	7 ( 30)	1728 ( 22)
2002	586 ( 21)	406 ( 54)	793 ( 24)	58 ( 5)	10 ( 42)	1869 ( 24)
2003	597 ( 22)	350 ( 46)	749 ( 22)	58 ( 5)	10 ( 40)	1775 ( 22)
2004	455 ( 17)	318 ( 42)	685 ( 20)	54 ( 5)	6 ( 23)	1531 ( 19)
2005	427 ( 16)	342 ( 45)	623 ( 18)	51 ( 4)	<5 ( -)	1456 ( 18)
2006	422 ( 16)	297 ( 39)	611 ( 17)	51 ( 4)	6 ( 22)	1396 ( 17)
2007	323 ( 12)	264 ( 34)	557 ( 15)	48 ( 4)	7 ( 26)	1212 ( 15)
2008 (3)	382 ( 14)	309 ( 40)	571 ( 15)	57 ( 5)	5 ( 20)	1349 ( 16)
2009 (3)	331 ( 12)	303 ( 39)	614 ( 16)	47 ( 4)	5 ( 21)	1312 ( 15)
2010 (3)	175 ( 6)	213 ( 27)	372 ( 10)	19 ( 2)	8 ( 33)	793 ( 9)
<b>Cumulative Total</b>						
1982-2010	24862	11631	19229	1241	232	57808

1. Rates are based on population estimates for 2001-2009. Rates based on observations fewer than 20 may not be reliable (see technical notes).
2. Total includes persons who have multiple races/ethnicities or have missing information on race/ethnicity.
3. Data are provisional due to reporting delay.

TABLE 16. AIDS DIAGNOSES BY GENDER, TRANSMISSION CATEGORY, AND YEAR OF DIAGNOSIS, REPORTED BY DECEMBER 31, 2010, LOS ANGELES COUNTY

Transmission Category (1)	Year of Diagnosis									Cumulative 1982-2010 No. (%)
	2002 No. (%)	2003 No. (%)	2004 No. (%)	2005 No. (%)	2006 No. (%)	2007 No. (%)	2008(2) No. (%)	2009(2) No. (%)	2010(2) No. (%)	
<b>MALE</b>										
Male-male sexual contact	1317 ( 80)	1280 ( 82)	1098 ( 82)	1062 ( 83)	1021 ( 84)	887 ( 84)	1024 ( 87)	990 ( 86)	617 ( 88)	43856 ( 83)
Injection drug user (IDU)	98 ( 6)	78 ( 5)	83 ( 6)	69 ( 5)	50 ( 4)	40 ( 4)	39 ( 3)	48 ( 4)	22 ( 3)	3008 ( 6)
Male-male sexual contact/IDU	137 ( 8)	122 ( 8)	109 ( 8)	96 ( 7)	98 ( 8)	95 ( 9)	84 ( 7)	68 ( 6)	43 ( 6)	4273 ( 8)
Hemophilia or coagulation disorder	<5 ( -)	<5 ( -)	<5 ( -)	<5 ( -)	<5 ( -)	<5 ( -)	<5 ( -)	<5 ( -)	<5 ( -)	182 ( <1)
Heterosexual contact (3)	78 ( 5)	74 ( 5)	53 ( 4)	44 ( 3)	42 ( 3)	35 ( 3)	27 ( 2)	34 ( 3)	17 ( 2)	1247 ( 2)
Transfusion recipient	<5 ( -)	<5 ( -)	<5 ( -)	<5 ( -)	<5 ( -)	<5 ( -)	<5 ( -)	<5 ( -)	<5 ( -)	293 ( 1)
Perinatal exposure	<5 ( -)	<5 ( -)	<5 ( -)	<5 ( -)	5 ( <1)	<5 ( -)	<5 ( -)	5 ( <1)	<5 ( -)	111 ( <1)
Other/Undetermined	<5 ( -)	<5 ( -)	<5 ( -)	<5 ( -)	<5 ( -)	<5 ( -)	<5 ( -)	<5 ( -)	<5 ( -)	14 ( <1)
Male subtotal	1638	1559	1346	1274	1217	1061	1177	1146	703	52984
[% of annual cases]	[ 88]	[ 88]	[ 88]	[ 87]	[ 87]	[ 87]	[ 87]	[ 87]	[ 89]	[ 91]
<b>FEMALE</b>										
Injection drug user (IDU)	73 ( 31)	48 ( 22)	53 ( 28)	48 ( 26)	42 ( 23)	30 ( 19)	42 ( 24)	37 ( 22)	24 ( 27)	1490 ( 29)
Hemophilia or coagulation disorder	<5 ( -)	<5 ( -)	<5 ( -)	<5 ( -)	<5 ( -)	<5 ( -)	<5 ( -)	<5 ( -)	<5 ( -)	19 ( <1)
Heterosexual contact (3)	153 ( 65)	166 ( 76)	130 ( 70)	132 ( 72)	132 ( 74)	119 ( 78)	129 ( 75)	122 ( 73)	66 ( 72)	3233 ( 64)
Transfusion recipient	<5 ( -)	<5 ( -)	<5 ( -)	<5 ( -)	<5 ( -)	<5 ( -)	<5 ( -)	<5 ( -)	<5 ( -)	218 ( 4)
Perinatal exposure	<5 ( -)	<5 ( -)	<5 ( -)	<5 ( -)	<5 ( -)	<5 ( -)	<5 ( -)	6 ( 4)	<5 ( -)	114 ( 2)
Other/Undetermined	<5 ( -)	<5 ( -)	<5 ( -)	<5 ( -)	<5 ( -)	<5 ( -)	<5 ( -)	<5 ( -)	<5 ( -)	6 ( <1)
Female subtotal	234	217	187	184	179	152	173	166	91	5080
[% of annual cases]	[ 13]	[ 12]	[ 12]	[ 13]	[ 13]	[ 13]	[ 13]	[ 13]	[ 11]	[ 9]
<b>Total</b>	<b>1872</b>	<b>1776</b>	<b>1533</b>	<b>1458</b>	<b>1396</b>	<b>1213</b>	<b>1350</b>	<b>1312</b>	<b>794</b>	<b>58064</b>

1. Persons without an identified risk factor are assigned a risk factor using multiple imputation (MI) methods (see technical notes).  
 2. Data are provisional due to reporting delay.  
 3. Heterosexual contact indicates contact with a person who is HIV-infected or at increased risk for HIV.

TABLE 17. AIDS DIAGNOSES AMONG WHITES BY GENDER, TRANSMISSION CATEGORY, AND YEAR OF DIAGNOSIS, REPORTED BY DECEMBER 31, 2010, LOS ANGELES COUNTY

Transmission Category (1)	Year of Diagnosis									Cumulative 1982-2010 No. (%)
	2002 No. (%)	2003 No. (%)	2004 No. (%)	2005 No. (%)	2006 No. (%)	2007 No. (%)	2008(2) No. (%)	2009(2) No. (%)	2010(2) No. (%)	
<b>MALE</b>										
Male-male sexual contact	458 ( 84)	493 ( 87)	349 ( 83)	337 ( 84)	353 ( 87)	252 ( 83)	316 ( 88)	268 ( 88)	141 ( 87)	20703 ( 87)
Injection drug user (IDU)	21 ( 4)	19 ( 3)	19 ( 5)	20 ( 5)	11 ( 3)	10 ( 3)	8 ( 2)	12 ( 4)	<5 ( -)	806 ( 3)
Male-male sexual contact/IDU	62 ( 11)	53 ( 9)	45 ( 11)	39 ( 10)	35 ( 9)	35 ( 12)	34 ( 9)	20 ( 7)	15 ( 9)	1971 ( 8)
Hemophilia or coagulation disorder	<5 ( -)	<5 ( -)	<5 ( -)	<5 ( -)	<5 ( -)	<5 ( -)	<5 ( -)	<5 ( -)	<5 ( -)	102 ( <1)
Heterosexual contact (3)	5 ( 1)	5 ( 1)	6 ( 1)	<5 ( -)	5 ( 1)	<5 ( -)	<5 ( -)	6 ( 2)	<5 ( -)	166 ( 1)
Transfusion recipient	<5 ( -)	<5 ( -)	<5 ( -)	<5 ( -)	<5 ( -)	<5 ( -)	<5 ( -)	<5 ( -)	<5 ( -)	139 ( 1)
Perinatal exposure	<5 ( -)	<5 ( -)	<5 ( -)	<5 ( -)	<5 ( -)	<5 ( -)	<5 ( -)	<5 ( -)	<5 ( -)	11 ( <1)
Male subtotal	547	570	419	399	404	302	359	306	163	23897
[% of annual cases]	[ 93]	[ 95]	[ 92]	[ 93]	[ 96]	[ 93]	[ 94]	[ 92]	[ 93]	[ 96]
<b>FEMALE</b>										
Injection drug user (IDU)	22 ( 56)	12 ( 44)	19 ( 53)	13 ( 43)	9 ( 47)	9 ( 43)	11 ( 47)	9 ( 34)	6 ( 48)	421 ( 42)
Hemophilia or coagulation disorder	<5 ( -)	<5 ( -)	<5 ( -)	<5 ( -)	<5 ( -)	<5 ( -)	<5 ( -)	<5 ( -)	<5 ( -)	9 ( 1)
Heterosexual contact (3)	16 ( 41)	15 ( 53)	17 ( 47)	15 ( 50)	10 ( 53)	12 ( 57)	12 ( 53)	17 ( 66)	6 ( 52)	487 ( 48)
Transfusion recipient	<5 ( -)	<5 ( -)	<5 ( -)	<5 ( -)	<5 ( -)	<5 ( -)	<5 ( -)	<5 ( -)	<5 ( -)	78 ( 8)
Perinatal exposure	<5 ( -)	<5 ( -)	<5 ( -)	<5 ( -)	<5 ( -)	<5 ( -)	<5 ( -)	<5 ( -)	<5 ( -)	13 ( 1)
Other/Undetermined	<5 ( -)	<5 ( -)	<5 ( -)	<5 ( -)	<5 ( -)	<5 ( -)	<5 ( -)	<5 ( -)	<5 ( -)	<5 ( -)
Female subtotal	39	28	36	29	18	21	23	25	12	1010
[% of annual cases]	[ 7]	[ 5]	[ 8]	[ 7]	[ 4]	[ 7]	[ 6]	[ 8]	[ 7]	[ 4]
<b>Total</b>	<b>586</b>	<b>598</b>	<b>455</b>	<b>428</b>	<b>422</b>	<b>323</b>	<b>382</b>	<b>331</b>	<b>175</b>	<b>24907</b>

1. Persons without an identified risk factor are assigned a risk factor using multiple imputation (MI) methods (see technical notes).
2. Data are provisional due to reporting delay.
3. Heterosexual contact indicates contact with a person who is HIV-infected or at increased risk for HIV.

TABLE 18. AIDS DIAGNOSES AMONG BLACKS BY GENDER, TRANSMISSION CATEGORY, AND YEAR OF DIAGNOSIS, REPORTED BY DECEMBER 31, 2010, LOS ANGELES COUNTY

Transmission Category (1)	Year of Diagnosis									Cumulative 1982-2010 No. (%)
	2002 No. (%)	2003 No. (%)	2004 No. (%)	2005 No. (%)	2006 No. (%)	2007 No. (%)	2008(2) No. (%)	2009(2) No. (%)	2010(2) No. (%)	
<b>MALE</b>										
Male-male sexual contact	252 ( 77)	206 ( 75)	188 ( 77)	209 ( 79)	174 ( 76)	168 ( 81)	199 ( 85)	188 ( 79)	152 ( 89)	7275 ( 74)
Injection drug user (IDU)	31 ( 10)	24 ( 9)	18 ( 8)	24 ( 9)	12 ( 5)	9 ( 4)	8 ( 4)	16 ( 7)	6 ( 3)	1059 ( 11)
Male-male sexual contact/IDU	28 ( 9)	22 ( 8)	27 ( 11)	20 ( 8)	29 ( 13)	22 ( 10)	17 ( 7)	22 ( 9)	7 ( 4)	1020 ( 10)
Hemophilia or coagulation disorder	<5 ( -)	<5 ( -)	<5 ( -)	<5 ( -)	<5 ( -)	<5 ( -)	<5 ( -)	<5 ( -)	<5 ( -)	23 ( <1)
Heterosexual contact (3)	13 ( 4)	20 ( 7)	9 ( 4)	11 ( 4)	13 ( 6)	8 ( 4)	8 ( 3)	10 ( 4)	6 ( 4)	343 ( 3)
Transfusion recipient	<5 ( -)	<5 ( -)	<5 ( -)	<5 ( -)	<5 ( -)	<5 ( -)	<5 ( -)	<5 ( -)	<5 ( -)	49 ( <1)
Perinatal exposure	<5 ( -)	<5 ( -)	<5 ( -)	<5 ( -)	<5 ( -)	<5 ( -)	<5 ( -)	<5 ( -)	<5 ( -)	46 ( <1)
Other/Undetermined	<5 ( -)	<5 ( -)	<5 ( -)	<5 ( -)	<5 ( -)	<5 ( -)	<5 ( -)	<5 ( -)	<5 ( -)	<5 ( -)
Male subtotal	328	273	244	265	230	207	234	238	171	9818
[% of annual cases]	[ 80]	[ 78]	[ 76]	[ 77]	[ 77]	[ 78]	[ 75]	[ 79]	[ 80]	[ 84]
<b>FEMALE</b>										
Injection drug user (IDU)	35 ( 44)	24 ( 31)	22 ( 30)	23 ( 29)	15 ( 22)	10 ( 17)	20 ( 26)	18 ( 28)	13 ( 31)	659 ( 35)
Hemophilia or coagulation disorder	<5 ( -)	<5 ( -)	<5 ( -)	<5 ( -)	<5 ( -)	<5 ( -)	<5 ( -)	<5 ( -)	<5 ( -)	6 ( <1)
Heterosexual contact (3)	43 ( 54)	51 ( 66)	50 ( 66)	53 ( 69)	50 ( 75)	47 ( 81)	56 ( 73)	44 ( 68)	29 ( 69)	1146 ( 60)
Transfusion recipient	<5 ( -)	<5 ( -)	<5 ( -)	<5 ( -)	<5 ( -)	<5 ( -)	<5 ( -)	<5 ( -)	<5 ( -)	49 ( 3)
Perinatal exposure	<5 ( -)	<5 ( -)	<5 ( -)	<5 ( -)	<5 ( -)	<5 ( -)	<5 ( -)	<5 ( -)	<5 ( -)	41 ( 2)
Female subtotal	80	77	75	77	67	58	76	65	42	1901
[% of annual cases]	[ 20]	[ 22]	[ 24]	[ 23]	[ 23]	[ 22]	[ 25]	[ 21]	[ 20]	[ 16]
<b>Total</b>	<b>408</b>	<b>350</b>	<b>319</b>	<b>342</b>	<b>297</b>	<b>265</b>	<b>310</b>	<b>303</b>	<b>213</b>	<b>11719</b>

1. Persons without an identified risk factor are assigned a risk factor using multiple imputation (MI) methods (see technical notes).  
 2. Data are provisional due to reporting delay.  
 3. Heterosexual contact indicates contact with a person who is HIV-infected or at increased risk for HIV.

TABLE 19. AIDS DIAGNOSES AMONG HISPANICS/LATINOS BY GENDER, TRANSMISSION CATEGORY AND YEAR OF DIAGNOSIS, REPORTED BY DECEMBER 31, 2010, LOS ANGELES COUNTY

Transmission Category (1)	Year of Diagnosis									Cumulative 1982-2010 No. (%)
	2002 No. (%)	2003 No. (%)	2004 No. (%)	2005 No. (%)	2006 No. (%)	2007 No. (%)	2008(2) No. (%)	2009(2) No. (%)	2010(2) No. (%)	
<b>MALE</b>										
Male-male sexual contact	553 ( 80)	520 ( 81)	511 ( 83)	470 ( 85)	443 ( 84)	415 ( 84)	438 ( 87)	486 ( 89)	296 ( 88)	14264 ( 82)
Injection drug user (IDU)	43 ( 6)	31 ( 5)	40 ( 6)	23 ( 4)	27 ( 5)	19 ( 4)	22 ( 4)	15 ( 3)	12 ( 4)	1072 ( 6)
Male-male sexual contact/IDU	37 ( 5)	45 ( 7)	33 ( 5)	31 ( 6)	34 ( 6)	37 ( 7)	30 ( 6)	23 ( 4)	18 ( 5)	1138 ( 7)
Hemophilia or coagulation disorder	<5 ( -)	<5 ( -)	<5 ( -)	<5 ( -)	<5 ( -)	<5 ( -)	<5 ( -)	<5 ( -)	<5 ( -)	48 (<1)
Heterosexual contact (3)	55 ( 8)	47 ( 7)	32 ( 5)	31 ( 6)	20 ( 4)	22 ( 4)	15 ( 3)	17 ( 3)	9 ( 3)	695 ( 4)
Transfusion recipient	<5 ( -)	<5 ( -)	<5 ( -)	<5 ( -)	<5 ( -)	<5 ( -)	<5 ( -)	<5 ( -)	<5 ( -)	85 (<1)
Perinatal exposure	<5 ( -)	<5 ( -)	<5 ( -)	<5 ( -)	<5 ( -)	<5 ( -)	<5 ( -)	<5 ( -)	<5 ( -)	49 (<1)
Other/Undetermined	<5 ( -)	<5 ( -)	<5 ( -)	<5 ( -)	<5 ( -)	<5 ( -)	<5 ( -)	<5 ( -)	<5 ( -)	6 (<1)
Male subtotal	690	644	617	554	526	493	505	545	337	17357
[% of annual cases]	[ 87]	[ 86]	[ 90]	[ 89]	[ 86]	[ 89]	[ 88]	[ 89]	[ 91]	[ 90]
<b>FEMALE</b>										
Injection drug user (IDU)	15 ( 14)	11 ( 11)	11 ( 16)	11 ( 16)	16 ( 19)	8 ( 13)	10 ( 15)	10 ( 14)	<5 ( -)	365 ( 18)
Hemophilia or coagulation disorder	<5 ( -)	<5 ( -)	<5 ( -)	<5 ( -)	<5 ( -)	<5 ( -)	<5 ( -)	<5 ( -)	<5 ( -)	<5 ( -)
Heterosexual contact (3)	86 ( 83)	94 ( 89)	56 ( 83)	58 ( 83)	67 ( 79)	54 ( 84)	55 ( 84)	55 ( 80)	30 ( 86)	1481 ( 75)
Transfusion recipient	<5 ( -)	<5 ( -)	<5 ( -)	<5 ( -)	<5 ( -)	<5 ( -)	<5 ( -)	<5 ( -)	<5 ( -)	76 ( 4)
Perinatal exposure	<5 ( -)	<5 ( -)	<5 ( -)	<5 ( -)	<5 ( -)	<5 ( -)	<5 ( -)	<5 ( -)	<5 ( -)	60 ( 3)
Other/Undetermined	<5 ( -)	<5 ( -)	<5 ( -)	<5 ( -)	<5 ( -)	<5 ( -)	<5 ( -)	<5 ( -)	<5 ( -)	<5 ( -)
Female subtotal	104	105	68	70	85	64	66	69	35	1987
[% of annual cases]	[ 13]	[ 14]	[ 10]	[ 11]	[ 14]	[ 11]	[ 12]	[ 11]	[ 9]	[ 10]
<b>Total</b>	<b>794</b>	<b>749</b>	<b>685</b>	<b>624</b>	<b>611</b>	<b>557</b>	<b>571</b>	<b>614</b>	<b>372</b>	<b>19344</b>

1. Persons without an identified risk factor are assigned a risk factor using multiple imputation (MI) methods (see technical notes).
2. Data are provisional due to reporting delay.
3. Heterosexual contact indicates contact with a person who is HIV-infected or at increased risk for HIV.

TABLE 20. PERSONS LIVING WITH AIDS AND RATES PER 100,000 (1) AT THE END OF CALENDAR YEAR, BY GENDER, AGE, RACE/ETHNICITY, AND TRANSMISSION CATEGORY REPORTED BY DECEMBER 31, 2010, LOS ANGELES COUNTY

Calendar Year	2003			2004			2005			2006			2007			2008 (2)			2009 (2)			2010 (2)		
	No.	(%)	Rate	No.	(%)	Rate	No.	(%)	Rate	No.	(%)	Rate	No.	(%)	Rate	No.	(%)	Rate	No.	(%)	Rate	No.	(%)	Rate
<b>GENDER</b>																								
Male	17717	(88)	357	18475	(88)	368	19173	(88)	379	19860	(88)	390	20455	(88)	400	21349	(88)	415	22257	(88)	431	22793	(88)	442
Female	2146	(11)	42	2248	(11)	44	2347	(11)	45	2437	(11)	47	2538	(11)	49	2668	(11)	51	2784	(11)	53	2845	(11)	54
Transgender (1)	171	(1)	-	185	(1)	-	201	(1)	-	203	(1)	-	217	(1)	-	224	(1)	-	234	(1)	-	238	(1)	-
<b>AGE GROUP (3)</b>																								
<13	42	(<1)	2	40	(<1)	2	36	(<1)	2	28	(<1)	1	21	(<1)	1	19	(<1)	1	14	(<1)	1	12	(<1)	1
13-19	67	(<1)	6	65	(<1)	6	55	(<1)	5	64	(<1)	6	62	(<1)	6	54	(<1)	5	69	(<1)	6	58	(<1)	5
20-29	904	(5)	62	853	(4)	59	877	(4)	61	884	(4)	62	913	(4)	63	911	(4)	62	960	(4)	65	930	(4)	63
30-39	5973	(30)	365	5650	(27)	347	5278	(24)	327	4910	(22)	308	4563	(20)	291	4306	(18)	278	4051	(16)	265	3738	(14)	245
40-49	8446	(42)	570	9064	(43)	599	9578	(44)	625	9965	(44)	645	10204	(44)	660	10514	(43)	677	10665	(42)	683	10463	(40)	670
50-59	3528	(18)	336	3986	(19)	365	4499	(21)	396	5055	(22)	431	5584	(24)	465	6266	(26)	509	6989	(28)	556	7652	(30)	609
60+	1074	(5)	81	1250	(6)	91	1398	(6)	100	1594	(7)	111	1863	(8)	127	2171	(9)	142	2527	(10)	161	3023	(12)	192
<b>RACE/ETHNICITY</b>																								
White	7374	(37)	235	7606	(36)	243	7795	(36)	250	7982	(35)	258	8130	(35)	262	8433	(35)	270	8681	(34)	277	8807	(34)	281
Black	4103	(20)	432	4250	(20)	449	4424	(20)	470	4561	(20)	488	4686	(20)	497	4901	(20)	519	5128	(20)	543	5294	(20)	561
Hispanic/Latino	7805	(39)	169	8256	(39)	175	8661	(40)	181	9077	(40)	186	9471	(41)	194	9920	(41)	203	10433	(41)	212	10718	(41)	218
Asian/PI	473	(2)	36	515	(2)	39	560	(3)	42	599	(3)	44	633	(3)	46	678	(3)	49	714	(3)	51	733	(3)	53
AI/AN	91	(<1)	307	93	(<1)	308	93	(<1)	303	96	(<1)	309	98	(<1)	319	100	(<1)	347	103	(<1)	373	109	(<1)	395
<b>TRANSMISSION CATEGORY (1,4)</b>																								
MSM	14639	(73)		15313	(73)		15967	(74)		16581	(74)		17129	(74)		17946	(74)		18759	(74)		19242	(74)	
IDU	1548	(8)		1589	(8)		1618	(7)		1628	(7)		1637	(7)		1685	(7)		1732	(7)		1761	(7)	
MSM/IDU	1555	(8)		1604	(8)		1629	(8)		1675	(7)		1719	(7)		1773	(7)		1818	(7)		1844	(7)	
Hemophi/Transfusion	137	(1)		138	(1)		137	(1)		131	(1)		127	(1)		127	(1)		127	(1)		129	(<1)	
Heterosexual contact	2062	(10)		2169	(10)		2274	(10)		2384	(11)		2491	(11)		2601	(11)		2719	(11)		2778	(11)	
Perinatal exposure	82	(<1)		84	(<1)		86	(<1)		91	(<1)		96	(<1)		98	(<1)		109	(<1)		110	(<1)	
Other/Undetermined	10	(<1)		10	(<1)		10	(<1)		10	(<1)		11	(<1)		11	(<1)		11	(<1)		11	(<1)	
<b>Total (5)</b>	<b>20034</b>	<b>(100)</b>	<b>200</b>	<b>20908</b>	<b>(100)</b>	<b>206</b>	<b>21721</b>	<b>(100)</b>	<b>213</b>	<b>22500</b>	<b>(100)</b>	<b>219</b>	<b>23210</b>	<b>(100)</b>	<b>225</b>	<b>24241</b>	<b>(100)</b>	<b>234</b>	<b>25275</b>	<b>(100)</b>	<b>243</b>	<b>25876</b>	<b>(100)</b>	<b>248</b>

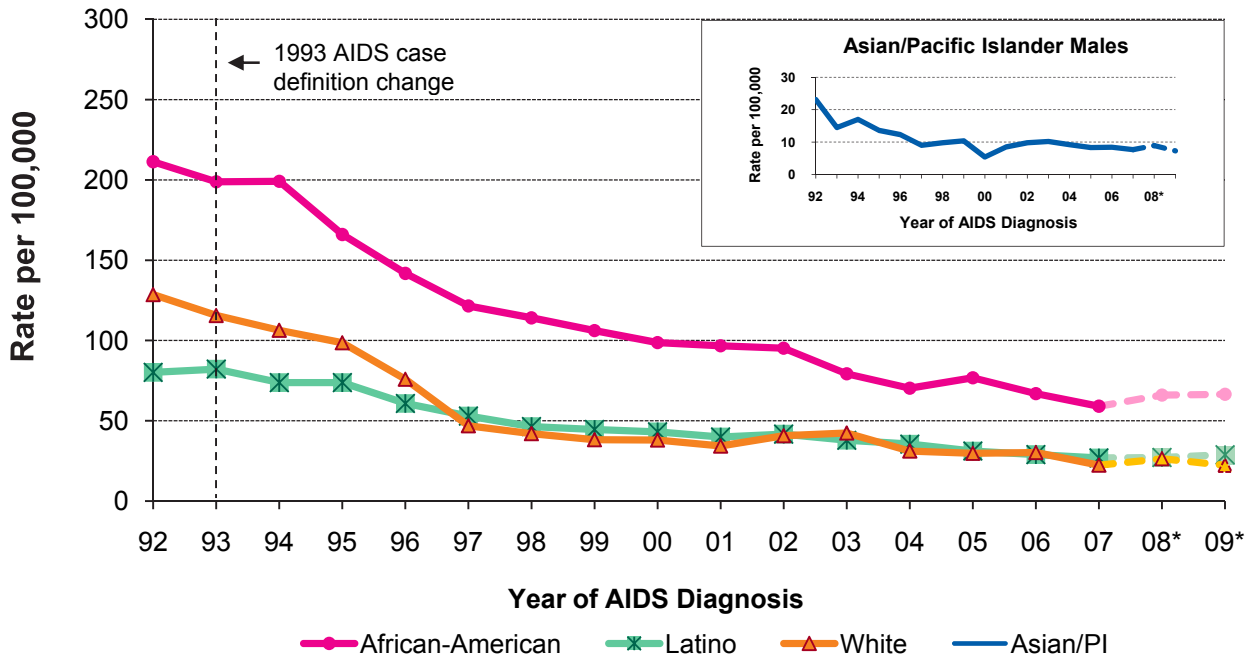
1. Rates for 2010 are calculated using population estimates for 2009. Rates that are based on observations fewer than 20 may not be reliable. Rates for transgender and transmission category are not calculated, because of the lack of denominator data (see technical notes).
2. Data are provisional due to reporting delay.
3. Age as of the end of year.
4. Persons without an identified risk factor are assigned a risk factor using multiple imputation (MI) methods (see technical notes).
5. Total includes persons who have multiple races/ethnicities or have missing information on race/ethnicity.

TABLE 21. PERSONS LIVING WITH AIDS AND RATES PER 100,000 (1) AS OF DECEMBER 31, 2010  
 BY SERVICE PLANNING AREA (SPA), GENDER, AGE, RACE/ETHNICITY AND TRANSMISSION CATEGORY, LOS ANGELES COUNTY

Service Planning Area	Antelope Valley			San Fernando			San Gabriel			Metro			West			South			East			South Bay/LB			Total (2)		
	No.	(%)	Rate	No.	(%)	Rate	No.	(%)	Rate	No.	(%)	Rate	No.	(%)	Rate	No.	(%)	Rate	No.	(%)	Rate	No.	(%)	Rate	No.	(%)	Rate
<b>GENDER (3)</b>																											
Male	254	(80)	137	3124	(89)	283	1519	(84)	165	8928	(93)	1395	1248	(91)	394	2094	(78)	407	1449	(85)	212	4133	(87)	520	22793	(88)	442
Female	60	(19)	33	366	(10)	33	272	(15)	28	626	(6)	103	119	(9)	36	567	(21)	106	249	(15)	36	583	(12)	71	2845	(11)	54
Transgender	<5	(-)	-	39	(1)	<1	15	(1)	<1	96	(1)	<1	8	(1)	<1	28	(1)	<1	11	(1)	<1	37	(1)	<1	238	(1)	<1
<b>AGE GROUP (4)</b>																											
<13	<5	(-)	-	<5	(-)	-	<5	(-)	-	<5	(-)	-	<5	(-)	-	<5	(-)	-	<5	(-)	-	5	(<1)	2	12	(<1)	1
13-19	<5	(-)	-	6	(<1)	3	<5	(-)	-	11	(<1)	9	<5	(-)	-	16	(1)	12	8	(<1)	5	12	(<1)	7	58	(<1)	5
20-29	12	(4)	18	127	(4)	42	74	(4)	26	250	(3)	166	26	(2)	39	170	(6)	99	86	(5)	40	183	(4)	84	930	(4)	63
30-39	42	(13)	107	493	(14)	159	287	(16)	112	1222	(13)	536	148	(11)	128	476	(18)	312	304	(18)	152	763	(16)	336	3738	(14)	245
40-49	118	(37)	231	1356	(38)	391	715	(40)	263	4062	(42)	1939	529	(38)	460	1018	(38)	782	684	(40)	364	1968	(41)	789	10463	(40)	670
50-59	103	(32)	227	1084	(31)	371	509	(28)	212	2952	(31)	2044	479	(35)	527	732	(27)	772	429	(25)	287	1346	(28)	674	7652	(30)	609
60+	42	(13)	94	461	(13)	131	216	(12)	70	1150	(12)	628	191	(14)	148	277	(10)	249	198	(12)	104	476	(10)	188	3023	(12)	192
<b>RACE/ETHNICITY</b>																											
White	111	(35)	70	1533	(43)	147	397	(22)	85	3796	(39)	1358	791	(58)	188	91	(3)	349	225	(13)	96	1838	(39)	362	8807	(34)	281
Black	94	(30)	181	403	(11)	522	279	(15)	348	1604	(17)	2217	211	(15)	488	1379	(51)	414	105	(6)	282	1210	(25)	485	5294	(20)	561
Hispanic/Latino	102	(32)	72	1426	(40)	167	980	(54)	114	3874	(40)	565	313	(23)	290	1187	(44)	177	1326	(78)	135	1498	(32)	245	10718	(41)	218
Asian/PI	6	(2)	42	110	(3)	47	126	(7)	26	249	(3)	122	35	(3)	44	6	(<1)	32	37	(2)	30	163	(3)	67	733	(3)	53
AI/AN	<5	(-)	-	17	(<1)	286	9	(<1)	197	44	(<1)	1298	9	(1)	656	9	(<1)	521	6	(<1)	142	14	(<1)	320	109	(<1)	395
<b>TRANSMISSION CATEGORY (3,5)</b>																											
MSM	175	(55)		2639	(75)		1255	(69)		7767	(80)		1083	(79)		1658	(62)		1200	(70)		3432	(72)		19242	(74)	
IDU	45	(14)		238	(7)		167	(9)		446	(5)		84	(6)		277	(10)		134	(8)		366	(8)		1761	(7)	
MSM/IDU	33	(10)		232	(7)		98	(5)		760	(8)		83	(6)		157	(6)		101	(6)		376	(8)		1844	(7)	
Hemophi/Transfusion	<5	(-)		25	(1)		15	(1)		23	(<1)		12	(1)		19	(1)		15	(1)		19	(<1)		129	(<1)	
Heterosexual contact	61	(19)		385	(11)		261	(14)		623	(6)		108	(8)		551	(20)		248	(15)		539	(11)		2778	(11)	
Perinatal exposure	<5	(-)		11	(<1)		8	(<1)		28	(<1)		<5	(-)		27	(1)		10	(1)		21	(<1)		110	(<1)	
Other/Undetermined	<5	(-)		<5	(-)		<5	(-)		<5	(-)		<5	(-)		<5	(-)		<5	(-)		<5	(-)		11	(<1)	
Total [% of total] (6)	317	[1]	86	3529	[14]	159	1806	[7]	96	9650	[37]	775	1375	[5]	211	2689	[10]	256	1709	[7]	124	4753	[18]	294	25876	[100]	248

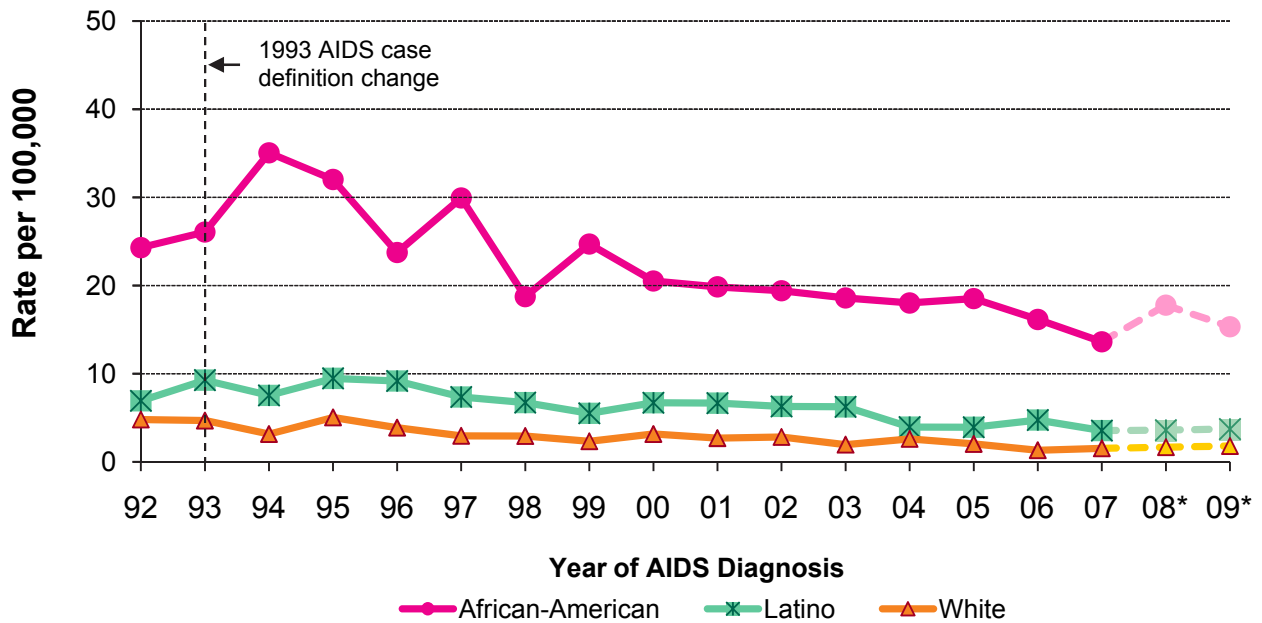
1. Rates are based on year 2009 population estimates. Rates that are based on observations fewer than 20 may not be reliable (see technical notes).  
 2. Total includes persons with no information on SPA.  
 3. Rates for transgender and transmission category are not calculated, because of the lack of denominator data. 4. Age as of December 31, 2010.  
 5. Persons without an identified risk factor are assigned a risk factor using multiple imputation (MI) methods (see technical notes).  
 6. Total includes persons who have multiple races/ethnicities or have missing information on race/ethnicity.

**FIGURE 4. MALE ADULT/ADOLESCENT AIDS RATES BY RACE/ETHNICITY<sup>1</sup> AND YEAR OF DIAGNOSIS, LOS ANGELES COUNTY, 1992-2009**



1. AIDS rates for Native Americans and Alaskan Natives are not presented here because rates based on small numbers may result in unstable estimates.  
 \* Data are provisional due to reporting delay.

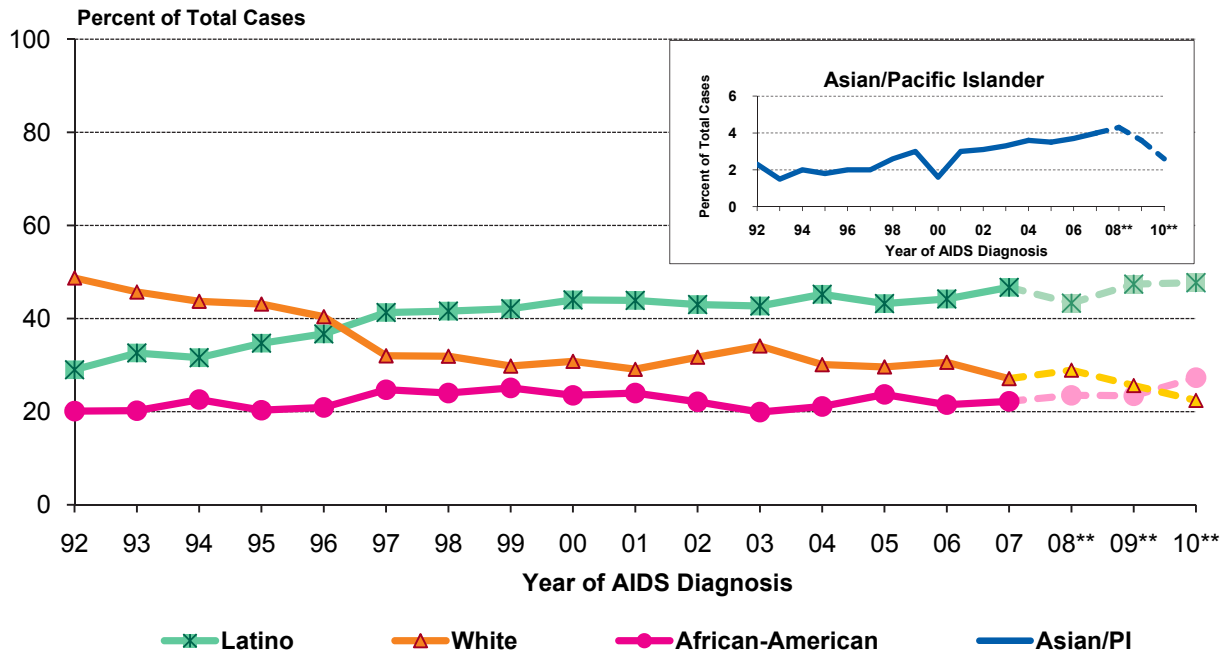
**FIGURE 5. FEMALE ADULT/ADOLESCENT AIDS RATES BY RACE/ETHNICITY<sup>1</sup> AND YEAR OF DIAGNOSIS, LOS ANGELES COUNTY, 1992-2009**



1. AIDS rates for Asian/Pacific Islander females, Native Americans and Alaskan Natives are not presented here because rates based on small numbers may result in unstable estimates.  
 \* Data are provisional due to reporting delay.

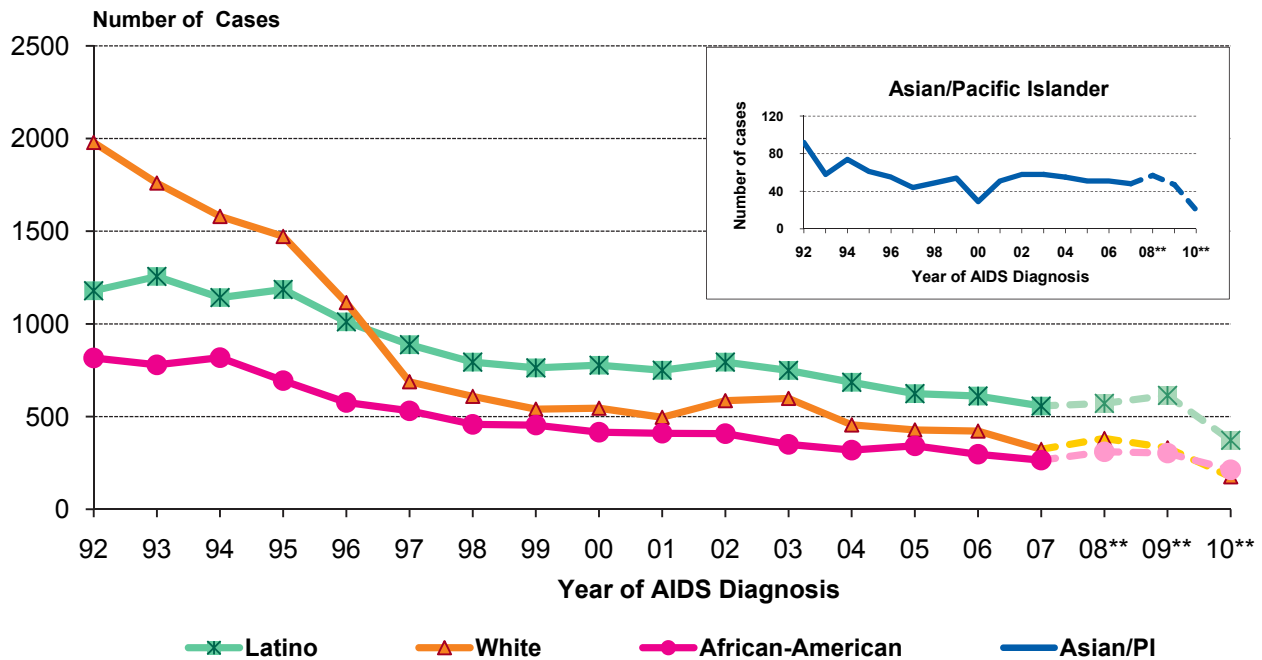


**FIGURE 6. PROPORTION OF AIDS DIAGNOSES AMONG ADULTS/ADOLESCENTS BY RACE/ETHNICITY\* AND YEAR OF DIAGNOSIS, LOS ANGELES COUNTY, 1992-2010**



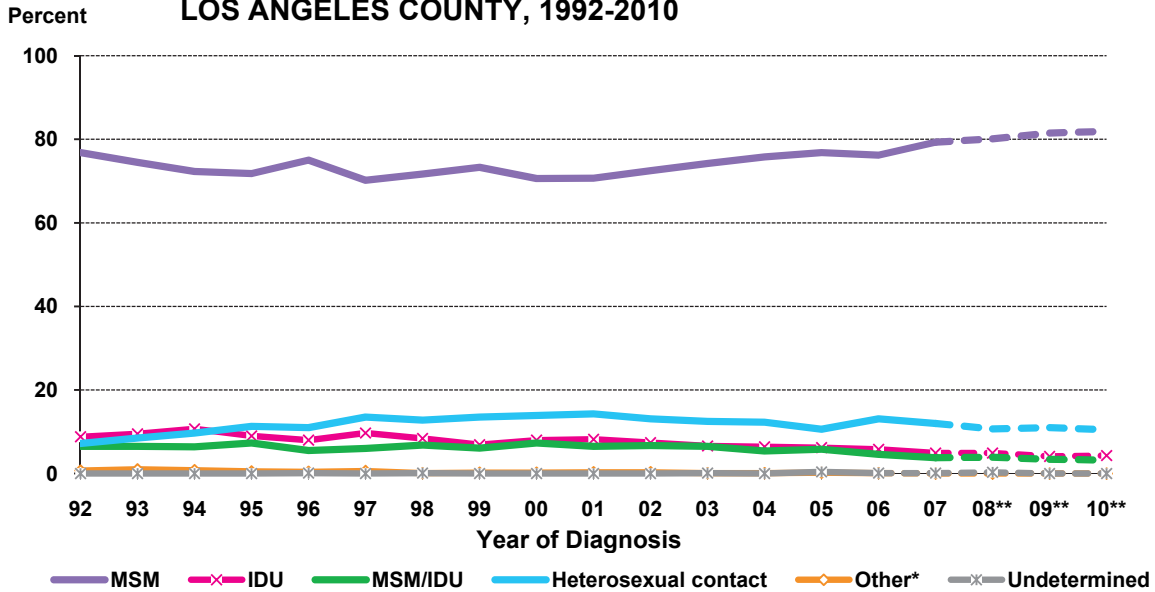
\* American Indian and Alaskan Native are not presented due to small numbers that may cause unstable estimates.  
 \*\* Data are provisional due to reporting delay.

**FIGURE 7. NUMBER OF AIDS DIAGNOSES AMONG ADULTS/ADOLESCENTS BY RACE/ETHNICITY\* AND YEAR OF DIAGNOSIS, LOS ANGELES COUNTY, 1992-2010**



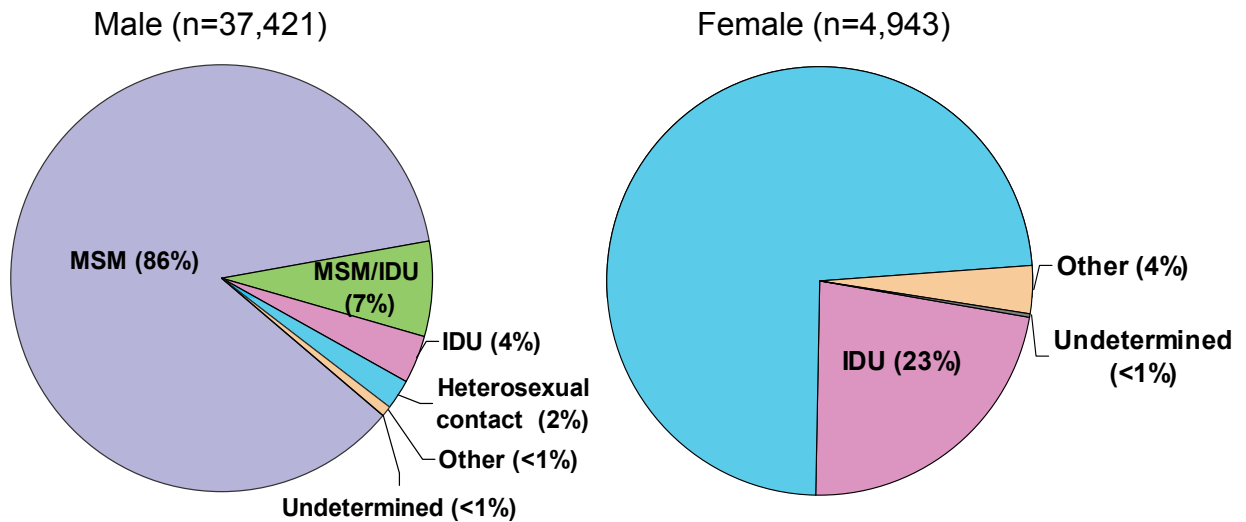
\* American Indian and Alaskan Native are not presented due to small numbers that may cause unstable estimates.  
 \*\* Data are provisional due to reporting delay.

**FIGURE 8. DIAGNOSES OF HIV (INCL AIDS) AMONG ADULTS/ADOLESCENTS, BY TRANSMISSION CATEGORY\* AND YEAR OF HIV DIAGNOSIS, LOS ANGELES COUNTY, 1992-2010**



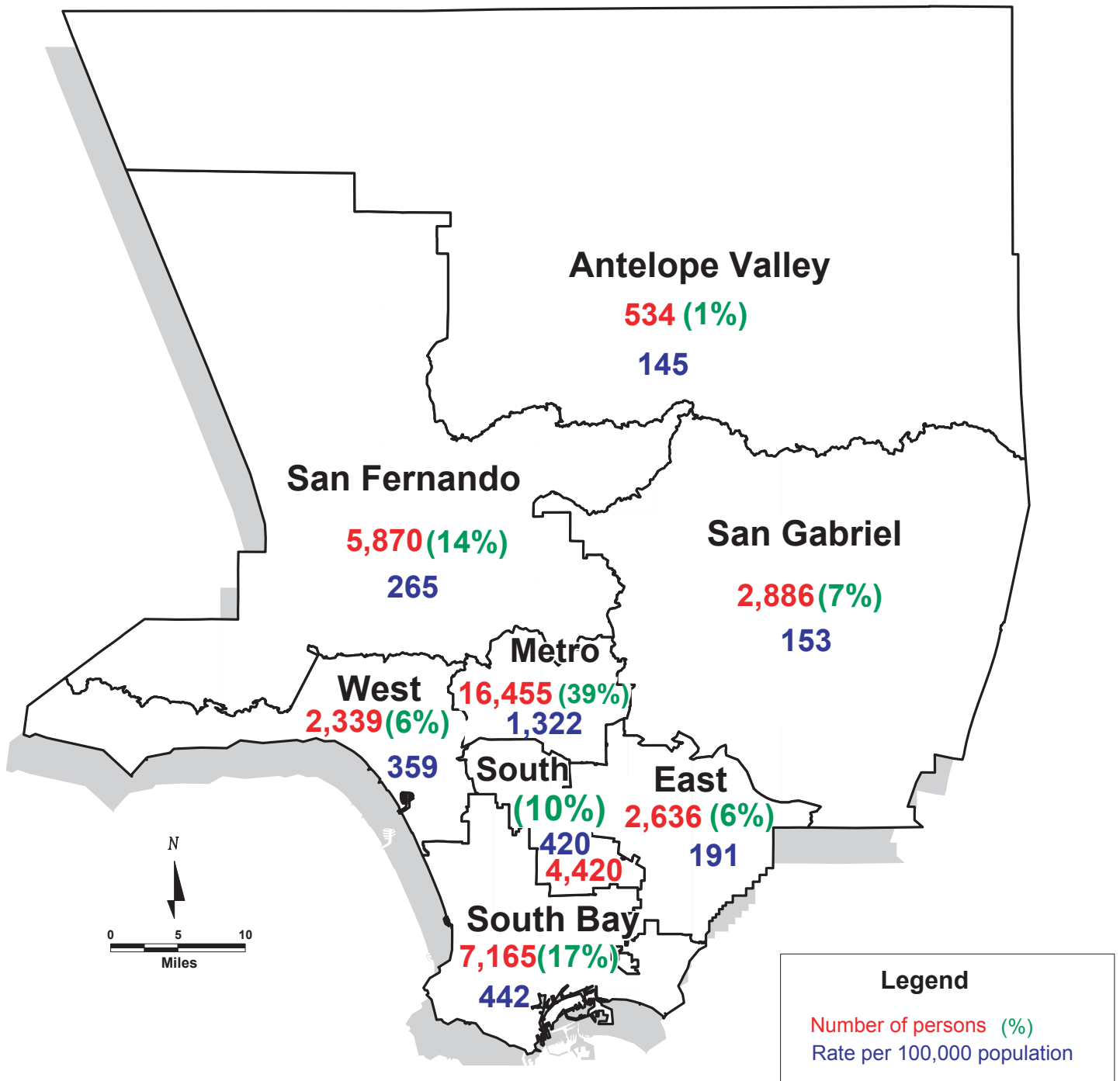
\* Persons with an undetermined transmission category are assigned a risk factor using multiple imputation (MI) methods. Other risks include hemophilia or coagulation disorder, transfusion recipient, perinatal exposure, and confirmed other risk.  
 \*\* Data are provisional due to reporting delay.

**FIGURE 9. TRANSMISSION CATEGORY\* FOR PERSONS LIVING WITH HIV/AIDS\*\* AS OF DECEMBER 31, 2010 BY GENDER IN LOS ANGELES COUNTY**



\* Persons with an undetermined transmission category are assigned a risk factor using multiple imputation (MI) methods. Other risks include hemophilia or coagulation disorder, transfusion recipient, perinatal exposure and confirmed other risk.  
 \*\* Data are provisional due to reporting delay.

**FIGURE 10. PERSONS LIVING WITH A DIAGNOSIS OF HIV INFECTION AS OF 12/31/2010 (1) AND RATE (2) PER 100,000 POPULATION BY SERVICE PLANNING AREA (SPA) IN LA COUNTY (N=42,364)**



1. Persons with HIV are based on the named reports from April 2006 to December 2010. The map does not include HIV persons who had been previously reported by code in LAC but had not yet been re-ascertained with name as of 12/31/2010.
2. Rates are based on population estimates (PEPS) for 2009.

## Appendix 1: 2008 Revised Surveillance Case Definitions for Human Immunodeficiency Virus (HIV) Infection Among Adults and Adolescents (aged ≥13 years)

*“These case definitions are intended for public health surveillance only and not as a guide for clinical diagnosis. Public health surveillance data are used primarily for monitoring the HIV epidemic and for planning on a population level, not for making clinical decisions for individual patients. CDC and the Council of State and Territorial Epidemiologists recommend that all states and territories conduct case surveillance of HIV infection and AIDS using the 2008 surveillance case definitions, effective immediately.” ~ MMWR 2008;57 (No. RR-10)*

Stage	Laboratory Evidence*	Clinical Evidence
Stage 1	Laboratory confirmation of HIV infection and CD4+ T-lymphocyte count of ≥500 cells/μl or CD4+ T-lymphocyte percentage of ≥29	None required (but no AIDS-defining condition)
Stage 2	Laboratory confirmation of HIV infection and CD4+ T-lymphocyte count of 200-499 cells/μl or CD4+ T-lymphocyte percentage of 14-28	None required (but no AIDS-defining condition)
Stage 3 (AIDS)	Laboratory confirmation of HIV infection and CD4+ T-lymphocyte count of <200 cells/μl or CD4+ T-lymphocyte percentage of <14 <sup>†</sup>	Or documentation of an AIDS-defining condition (with laboratory confirmation of HIV infection) <sup>†</sup>
Stage unknown <sup>§</sup>	Laboratory confirmation of HIV infection and no information on CD4+ T-lymphocyte count or percentage	And no information on presence of AIDS-defining conditions

\* The CD4+ T-lymphocyte percentage is the percentage of total lymphocytes. If the CD4+ T-lymphocyte count and percentage do not correspond to the same HIV infection stage, select the more severe stage.

<sup>†</sup> Documentation of an AIDS-defining condition (Appendix 2) supersedes a CD4+ T-lymphocyte count of ≥200 cells/μL and a CD4+ T-lymphocyte percentage of total lymphocytes of ≥14. Definitive diagnostic methods for these conditions are available in Appendix C of the 1993 revised HIV classification system and the expanded AIDS case definition (CDC. 1993 Revised classification system for HIV infection and expanded surveillance case definition for AIDS among adolescents and adults. MMWR 1992;41[No. RR-17]) and from the National Notifiable Diseases Surveillance System (available at [http://www.cdc.gov/epo/dphsi/casedef/case\\_definitions.htm](http://www.cdc.gov/epo/dphsi/casedef/case_definitions.htm)).

<sup>§</sup> Although cases with no information on CD4+ T-lymphocyte count or percentage or on the presence of AIDS-defining conditions can be classified as stage unknown, every effort should be made to report CD4+ T-lymphocyte counts or percentages and the presence of AIDS-defining conditions at the time of diagnosis. Additional CD4+ T-lymphocyte counts or percentages and any identified AIDS-defining conditions can be reported as recommended. (Council of State and Territorial Epidemiologists. Laboratory reporting of clinical test results indicative of HIV infection: new standards for a new era of surveillance and prevention [Position Statement 04-ID-07]; 2004. Available at <http://www.cste.org/ps/2004pdf/04-ID-07-final.pdf>.)

### Criteria for HIV infection for persons aged ≥13 years:

#### Laboratory Criteria:

Positive result from an HIV antibody screening test (e.g., reactive enzyme immunoassay [EIA]\*) confirmed by a positive result from a supplemental HIV antibody test (e.g., Western blot or indirect immunofluorescence assay test) OR positive result or report of a detectable quantity (i.e., within the established limits of the laboratory test) from any of the following HIV virologic (i.e., non-antibody) tests<sup>†</sup>:

- HIV nucleic acid (DNA or RNA) detection test (e.g., polymerase chain reaction [PCR])
- HIV p24 antigen test, including neutralization assay
- HIV isolation (viral culture)

#### Other Criterion (for Cases that Do Not Meet Laboratory Criteria)

HIV infection diagnosed by a physician or qualified medical-care provider<sup>§</sup> based on the laboratory criteria and documented in a medical record.<sup>¶</sup> Oral reports of prior laboratory test results are not acceptable.

\* Rapid tests are EIAs that do not have to be repeated but require a confirmatory test if reactive. Most conventional EIAs require a repeatedly reactive EIA that is confirmed by a positive result with a supplemental test for HIV antibody. Standard laboratory testing procedures should always be followed.

† For HIV screening, HIV virologic (non-antibody) tests should not be used in lieu of approved HIV antibody screening tests. A negative result (i.e., undetectable or nonreactive) from an HIV virologic test (e.g., viral RNA nucleic acid test) does not rule out the diagnosis of HIV infection.

§ Qualified medical-care providers might differ by jurisdiction and might include physicians, nurse practitioners, physician assistants, or nurse midwives.

¶ An original or copy of the laboratory report is preferred; however, in the rare instance the laboratory report is not available, a description of the laboratory report results by a physician or qualified medical-care provider documented in the medical record is acceptable for surveillance purposes. Every effort should be made to obtain a copy of the laboratory report for documentation in the medical record.

For the criteria for HIV infection among children aged <13 years, see “Revised Surveillance Case Definitions for HIV Infection Among Adults, Adolescents, and Children Aged <18 Months and for HIV Infection and AIDS Among Children Aged 18 Months to <13 Years --- United States, 2008”- MMWR 2008;57 (No. RR-10) <http://www.cdc.gov/mmwr/preview/mmwrhtml/rr5710a1.htm>

## Appendix 2: AIDS-Defining Conditions

- Bacterial infections, multiple or recurrent\*
- Candidiasis of bronchi, trachea, or lungs
- Candidiasis of esophagus †
- Cervical cancer, invasive §
- Coccidioidomycosis, disseminated or extrapulmonary
- Cryptococcosis, extrapulmonary
- Cryptosporidiosis, chronic intestinal (>1 month’s duration)
- Cytomegalovirus disease (other than liver, spleen, or nodes), onset at age >1 month
- Cytomegalovirus retinitis (with loss of vision) †
- Encephalopathy, HIV related
- Herpes simplex: chronic ulcers (>1 month’s duration) or bronchitis, pneumonitis, or esophagitis (onset at age >1 month)
- Histoplasmosis, disseminated or extrapulmonary
- Isosporiasis, chronic intestinal (>1 month’s duration)
- Kaposi’s sarcoma†
- Lymphoid interstitial pneumonia or pulmonary lymphoid hyperplasia complex\*†
- Lymphoma, Burkitt’s (or equivalent term)
- Lymphoma, immunoblastic (or equivalent term)
- Lymphoma, primary, of brain
- *Mycobacterium avium* complex or *Mycobacterium kansasii*, disseminated or extrapulmonary†
- *Mycobacterium tuberculosis* of any site, pulmonary, †§ disseminated,† or extrapulmonary†
- *Mycobacterium*, other species or unidentified species, disseminated† or extrapulmonary†
- *Pneumocystis jirovecii* pneumonia†
- Pneumonia, recurrent †§
- Progressive multifocal leukoencephalopathy
- *Salmonella* septicemia, recurrent
- Toxoplasmosis of brain, onset at age >1 month †
- Wasting syndrome attributed to HIV

\* Only among children aged <13 years. (CDC. 1994 Revised classification system for human immunodeficiency virus infection in children less than 13 years of age. MMWR 1994;43[No. RR-12].)

† Condition that might be diagnosed presumptively.

§ Only among adults and adolescents aged ≥13 years. (CDC. 1993 Revised classification system for HIV infection and expanded surveillance case definition for AIDS among adolescents and adults. MMWR 1992;41[No. RR-17].)

## Appendix 3: Technical Notes

### Surveillance of HIV Infection in Los Angeles County

Surveillance of HIV infections (including AIDS) in Los Angeles County (LAC) is conducted through active and passive surveillance to identify and collect information on cases of HIV and AIDS diagnosed at hospitals, clinics, private physician offices, laboratories, community-based organizations (CBOs), and hospices. Active surveillance requires HIV Epidemiology Program (HEP) staff to routinely contact and visit sites to facilitate the completion of HIV/AIDS case reports. Mandated reporters participating in passive surveillance submit case reports to HEP without any contact from surveillance staff. In LAC, about 75%-80% of persons reported with a diagnosis of HIV infection are collected through active surveillance activities.

Data on diagnoses of HIV infection should be interpreted with caution. HIV surveillance reports may not be representative of all persons infected with HIV because not all infected persons have been tested. Furthermore, the results of anonymous tests are not required to report in California. Therefore, reports of confidential test results may not represent all persons with HIV infection. Many factors, including the extent to which testing is routinely offered to specific groups and the availability of, and access to, medical care and testing services, may influence testing patterns. These data only provide a minimum estimate of persons known to be HIV infected.

### Reporting Delay

Reporting delay is defined as the time interval between diagnosis or death and the reporting of diagnosis or death to Los Angeles County HIV Epidemiology Program. The median reporting delay for all HIV/AIDS cases reported in 2009 was 8 months (range 1 to 362 months). The impact of report delay must be considered when evaluating trends in case numbers and rates over time (Figure 1-8, Tables 5-7, and 14-20).

### Rates

For Figure 4-5, Table 6-9, Table 11, Table 13-15, and Table 20-21. AIDS case rates are calculated using Population Estimation and Projection System (PEPS) for 1992-2009 that were prepared by Walter R. McDonald & Associates, Inc. (WRMA) for Urban Research, LA County ISD. Conforming to standard criterion used by the National Center for Health Statistics, rates are considered unreliable when the relative standard error of the rate is greater than or equal to 23%--that is, when rates are based on less than 20 observations.

### Race and ethnicity

Mandated collection of race and ethnicity data was implemented in January 1, 2003 as required by the OMB

Statistical Policy Directive 15. A minimum of 5 race categories should be collected including American Indian or Alaska Native, Asian, black or African American, Native Hawaiian or Other Pacific Islander, and white. Additionally, systems must be able to retain information when multiple racial categories are reported. Two ethnicity categories should be collected regardless of race: Hispanic and non-Hispanic.

Race and Ethnicity in this report are grouped using the following criteria exclusively: A person is considered to be 'Hispanic' if so indicated in race or ethnicity field, regardless of any other race information found for the person. When not indicated as 'Hispanic', a person is considered to be 'American Indian/Alaskan Native' if the race field contains AI/AN information, regardless of any other race information found for this person. A person is considered to be 'Asian/Pacific Islander' when either indicated as Asian or Native Hawaiian/Pacific Islander, or both in the race fields. Aside from the above criteria, a person is categorized as 'Multi-race' when two or more races are indicated in the above race fields. All other persons with a single race indicated are placed in the corresponding race category. Persons with multiple racial categories or unknown race are included in the total numbers in Table 2-3, Table 8-15, and Table 20-21.

### Transmission Categories

Transmission categories are assigned in a hierarchical fashion (listed from highest to lowest in the column headed "Transmission Category"). Persons who have been identified with two or more transmission categories are assigned to the category listed highest in the hierarchy. For example, a man who reports sexual contact with another man and heterosexual contact with an HIV-positive woman would be classified as "male-male sexual contact." The only exception to this rule includes those men who report both categories for sexual contact with another man and injection-drug use. A separate transmission category is created for these cases.

The heterosexual contact transmission category is limited to persons who had heterosexual contacts with an HIV-infected or a sexual partner with an increased risk for HIV. Transfusion or hemophilia transmission category is limited to persons who received blood transfusion no later than 1985 or persons who had been investigated and confirmed as having received transfusion of contaminated blood after 1985.

Cases in persons with no reported exposure to HIV through any of the routes listed in the hierarchy of transmission categories are classified as "undetermined" transmission category. These cases include some persons still under investigation; cases in persons whose exposure history is missing because they died; cases that have been followed up but declined to be interviewed, or were lost to

follow-up; and cases in persons who were interviewed or for whom other follow-up information was available but for whom no mode of exposure was identified. If the investigation identifies a mode of exposure, the case is reclassified into the corresponding transmission category.

Because a substantial proportion of cases of HIV infection and AIDS are reported without an identified risk factor, we use the CDC-recommended multiple imputation methods to assign a risk factor for these cases. Multiple imputation is a statistical approach in which each missing risk factor is replaced with a set of plausible values that represent the uncertainty about the true, but missing value. The plausible values are analyzed by using standard procedures, and the results from these analyses are then combined to produce the final results. In this report, multiple imputation has been used in tables showing estimated distribution by HIV transmission category for diagnoses among adults and adolescents, but not in tables concerning diagnoses among children (because the number of cases in children is small, missing risk factors were not imputed).

#### **AIDS-Indicator Conditions**

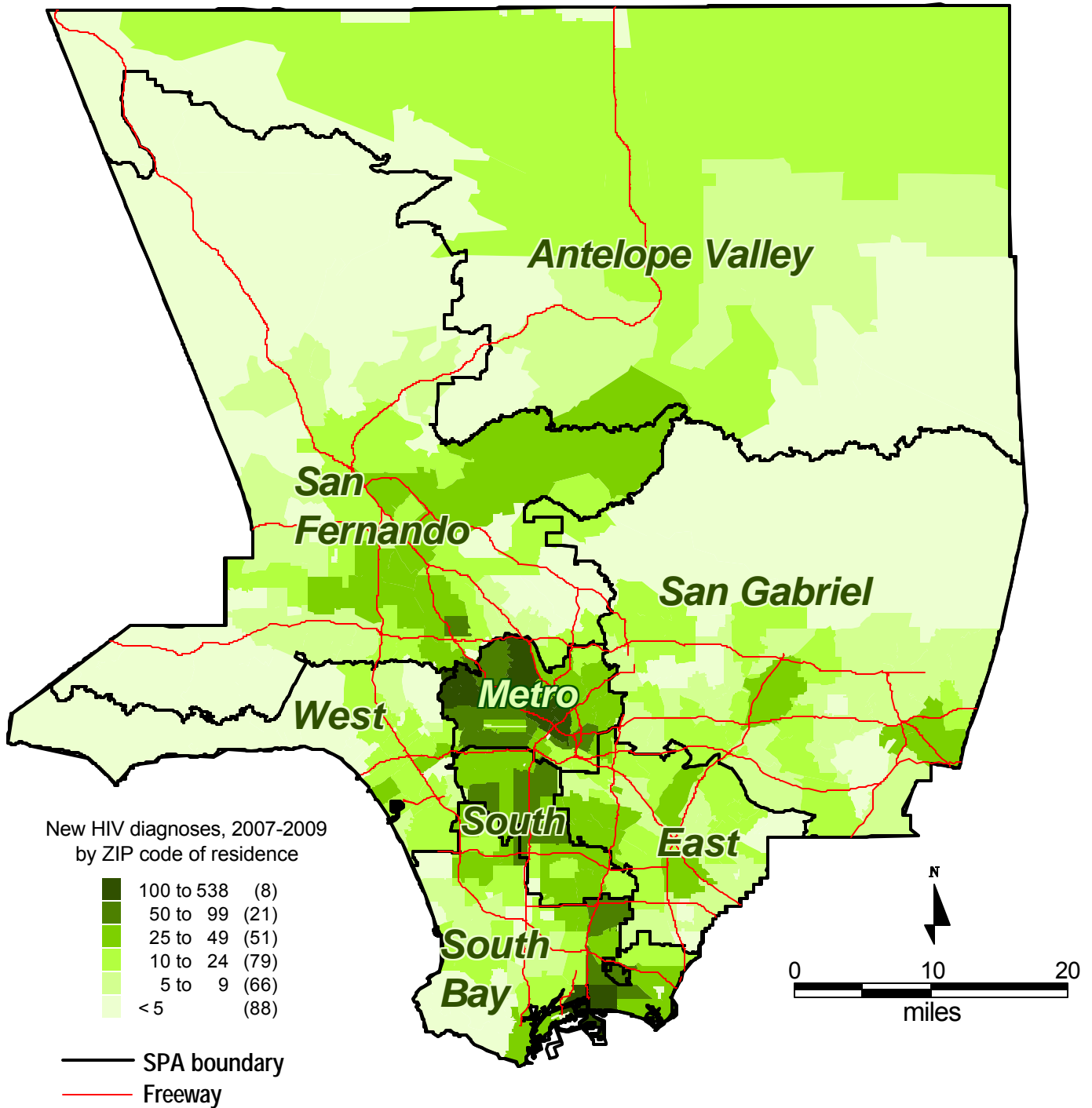
At the time of initial case report, all available information about AIDS-defining conditions is collected. However, after a case has been reported, systematic follow-up is not done to identify subsequent AIDS-defining conditions. Therefore, the information presented in Table 22 reflects initial AIDS-defining condition(s) and should be considered a minimum estimate of all AIDS-defining conditions.

## *Notes*



## *Notes*

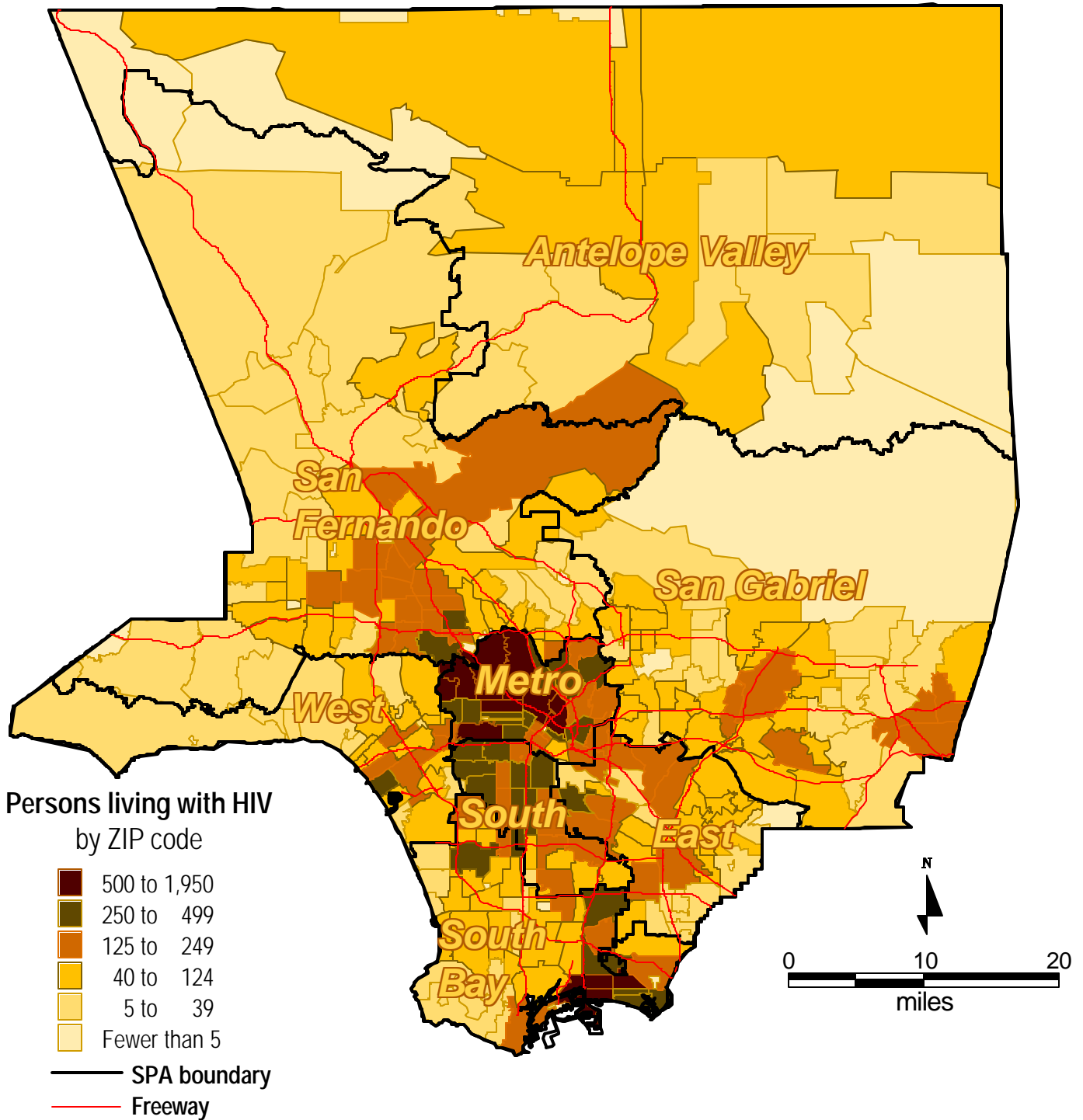
**FIG 11. NEW HIV DIAGNOSES IN 2007-2009 (1), BY ZIP CODE (2) AND SERVICE PLANNING AREA (SPA) IN LOS ANGELES COUNTY (N=7,055)**



1. Data are provisional due to reporting delay.
2. ZIP code information is based on the residence at time of HIV or AIDS diagnosis or the current address from the most recent report. The map does not include 4% of persons who are missing ZIP code information.



**FIG 12. PERSONS LIVING WITH A DIAGNOSIS OF HIV INFECTION AS OF 12/31/2010 (1), BY ZIP CODE AND SERVICE PLANNING AREA (SPA)(2) IN LOS ANGELES COUNTY (N=42,364)**



1. Data are provisional due to reporting delay and do not include coded HIV reports that had not yet been re-ascertained with name as of 12/31/2010.
2. ZIP code information is based on the residence at time of HIV diagnosis or the current address from the most recent report.

