



Basics of Infection Prevention 2 Day Mini Course

April 16-17, 2018
Los Angeles County Department of
Public Health



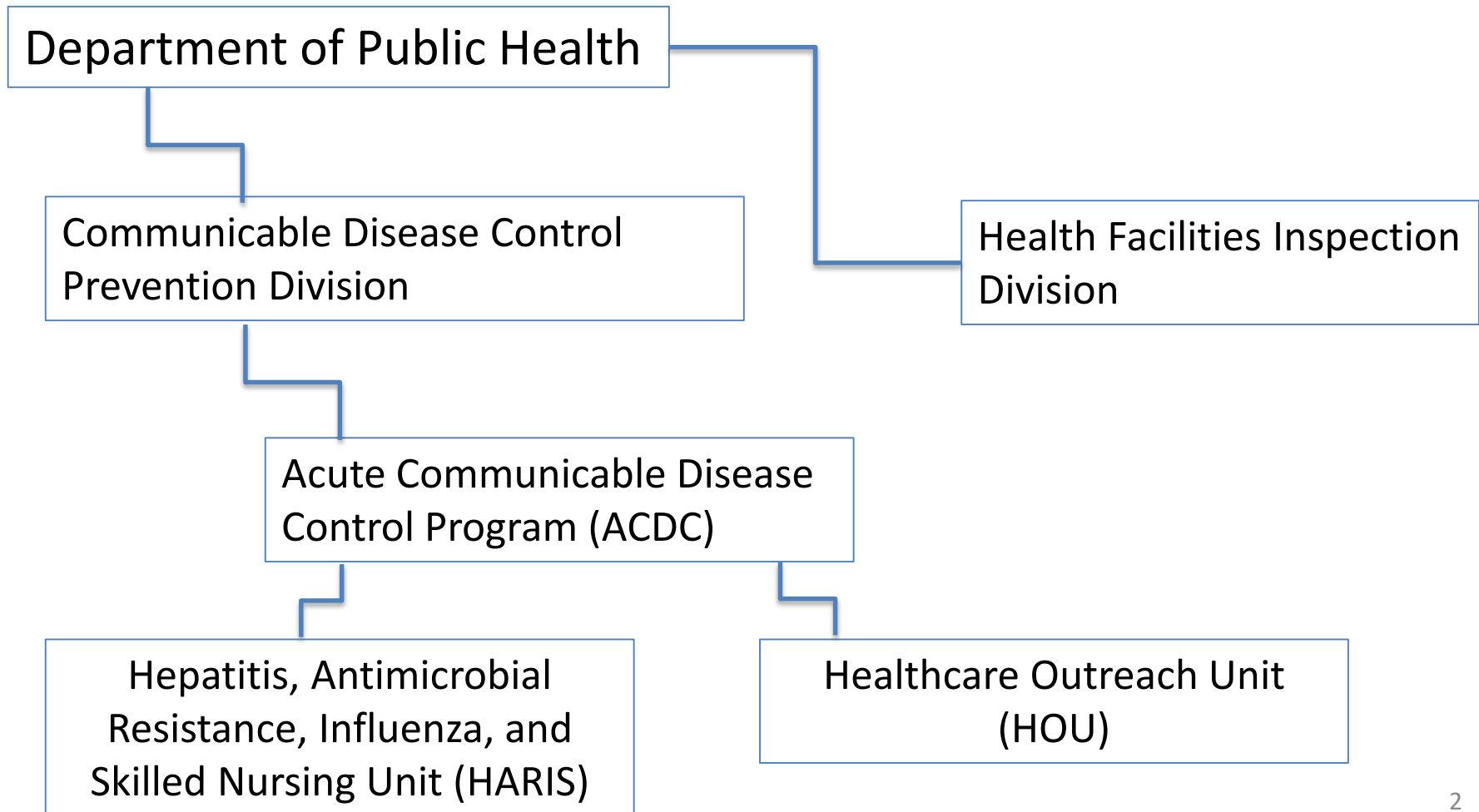
Los Angeles County FACTS

- 4,751 square miles
- 10.2 million residents
- 97 acute care hospitals
- Nearly 400 sub-acute/long-term care facilities
- Over 500 outpatient surgery centers
- 8 Service Planning Areas (SPAs)





LA County Department of Public Health Organization





LOS ANGELES COUNTY DEPARTMENT OF PUBLIC HEALTH ACUTE COMMUNICABLE DISEASE CONTROL (ACDC)

MISSION:

- To reduce communicable diseases (other than tuberculosis, STDs and HIV) in Los Angeles County through prevention, surveillance, and outbreak control



Hepatitis, Antimicrobial Resistance, Influenza, and Skilled Nursing Facilities (HARIS)

- Serve as liaisons between Public Health and LAC skilled nursing facilities
- Improve infection control and patient safety
- Conduct infection control assessments
- Oversee influenza surveillance and reporting of community associated *S. aureus*/MRSA



Healthcare Outreach Unit

- Serve as liaisons between Public Health and LAC Hospitals and Outpatient Health Facilities
- Increase mandatory disease reporting
- Investigate and manage CRE outbreaks in hospital and outpatient settings
- Characterize burden of healthcare associated infections and antimicrobial resistance in LAC





Health Facilities Inspection Division (Licensing & Certification)

- Has authority and responsibility for licensing and certification of
 - Health facilities (e.g., acute and subacute care facilities, ambulatory surgical centers)
 - Ancillary health services (e.g., home health agencies)
- Fulfilling responsibility requires inspections of health care facilities and providers to evaluate compliance
- Also respond to citizen complaints regarding health facilities/providers



Thank you!

- Outbreak Reporting to Public Health Morbidity Unit
 - Phone: (888) 397-3993
 - Fax: (888) 397-3778

- Acute Communicable Disease Control – for Infection Control Consultation
 - Phone: (213) 240-7941
 - Business Hours: Monday - Friday 8 AM – 5 PM



Video

**Office of the Assistant Secretary:
Patient Safety Educational Video**

Partnering to Heal

Click on a character below to begin.

- INSTRUCTIONS FOR USE
- WATCH THE INTRO VIDEO
- VIEW RESOURCE LIBRARY



Partnering to Heal

OASH/ODPHP Health Care-Associated Infections

59

<https://www.youtube.com/watch?v=pVOVPI9S9jk&t=76s>

<https://health.gov/hcq/trainings/partnering-to-heal/index.html>

1. <https://health.gov/hcq/trainings/partnering-to-heal.asp>