

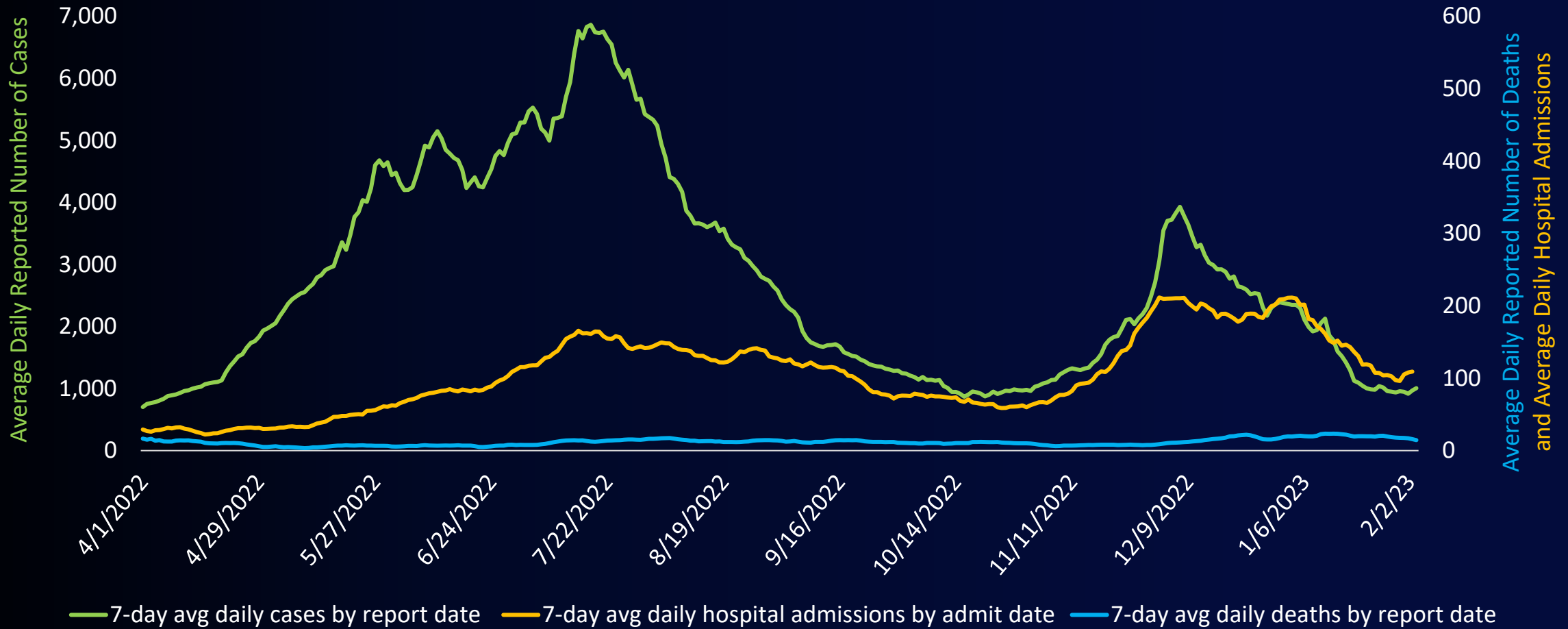
Media Briefing to Begin at 2:00pm



covid19.lacounty.gov

2/2/2023

7-Day Average Daily COVID-19 Cases and Deaths by Report Date* and Daily Hospital Admissions by Admit Date April 1, 2022 – February 2, 2023



covid19.lacounty.gov

2/2/2023

*Case and death values include data from Long Beach and Pasadena.

CDC COVID-19 Community Levels

New Cases (per 100,000 people in last 7 days)	Indicators	Low	Medium	High	LA County Current Values <u>New Cases:</u> 69/100,000 (as of 2/2/23)
Fewer than 200	New COVID-19 admissions per 100,000 population (7-day total)	<10.0	10.0-19.9	≥20.0	7.0
	Proportion of staffed inpatient beds occupied by COVID-19 patients (7-day average)	<10.0%	10.0-14.9%	≥15.0%	4.0%
200 or more	New COVID-19 admissions per 100,000 population (7-day total)	NA	<10.0	≥10.0	NA
	Proportion of staffed inpatient beds occupied by COVID-19 patients (7-day average)	NA	<10.0%	≥10.0%	NA

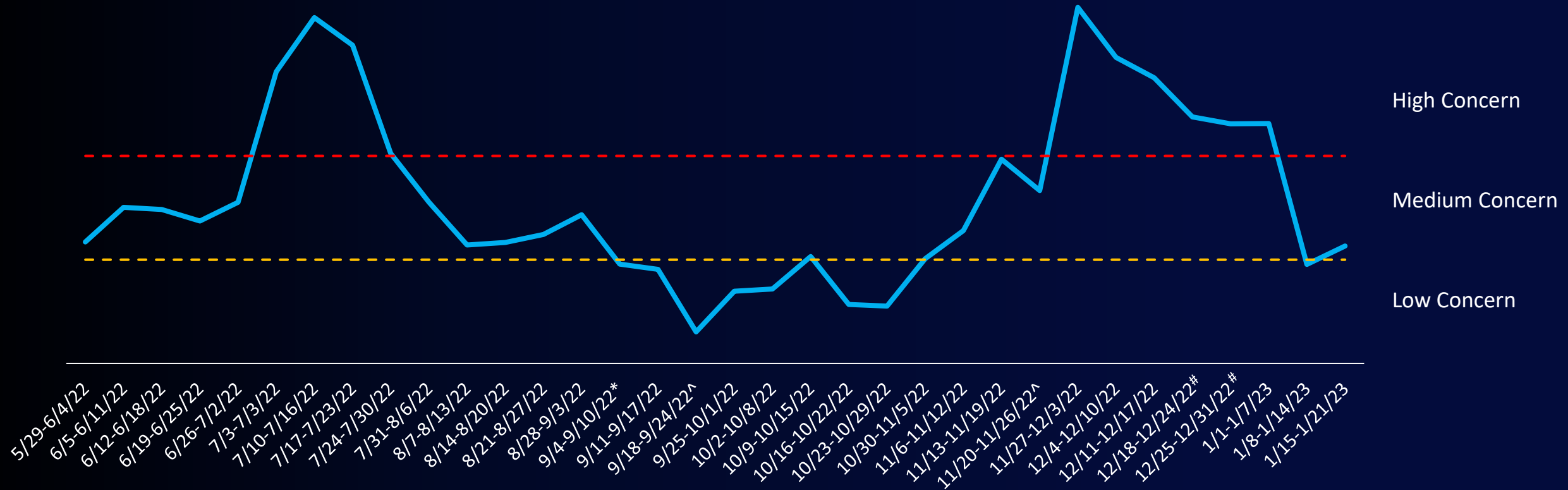
The COVID-19 community level is determined by the higher of the inpatient beds and new admissions indicators, based on the current level of new cases per 100,000 population in the past 7 days.



covid19.lacounty.gov

2/2/2023

Los Angeles County Population Weighted Average Wastewater SARS-CoV-2 Concentrations



covid19.lacounty.gov

2/2/2023

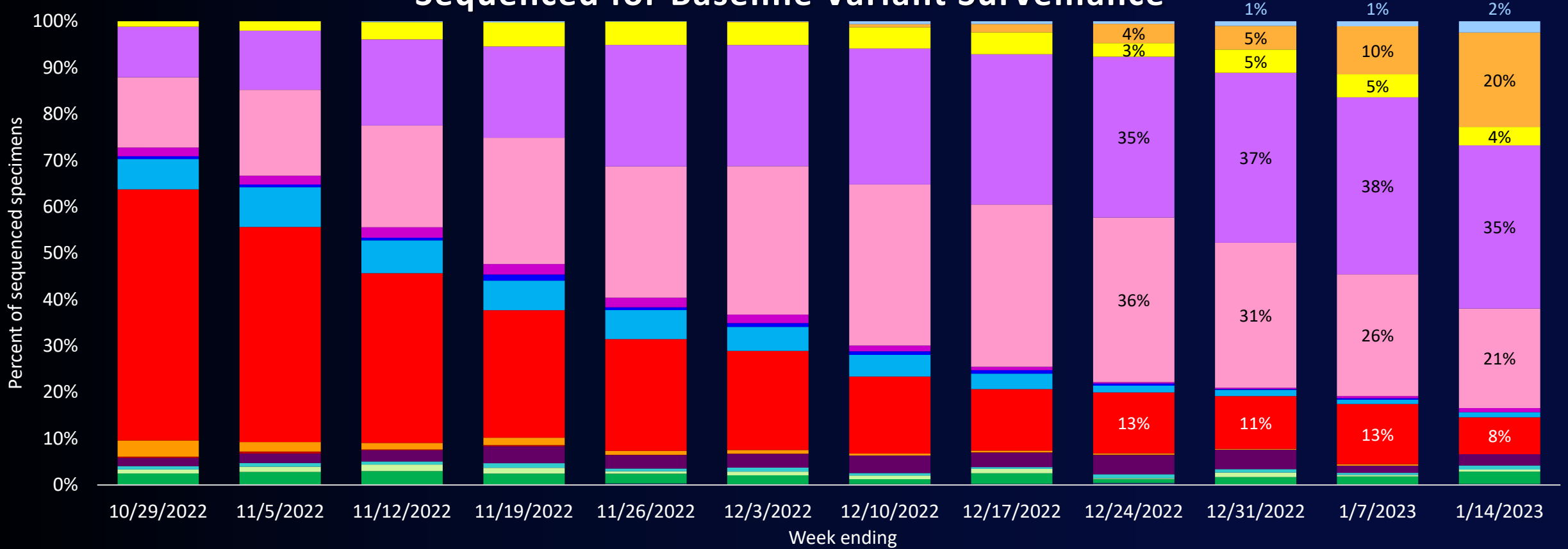
Data are normalized average wastewater SARS-CoV-2 concentrations.

*No data for Lancaster treatment plant

^No data for Lancaster & Tapia treatment plants

#No data for Tapia treatment plant

SARS-CoV-2 Variants as a Percentage of All Specimens Sequenced for Baseline Variant Surveillance

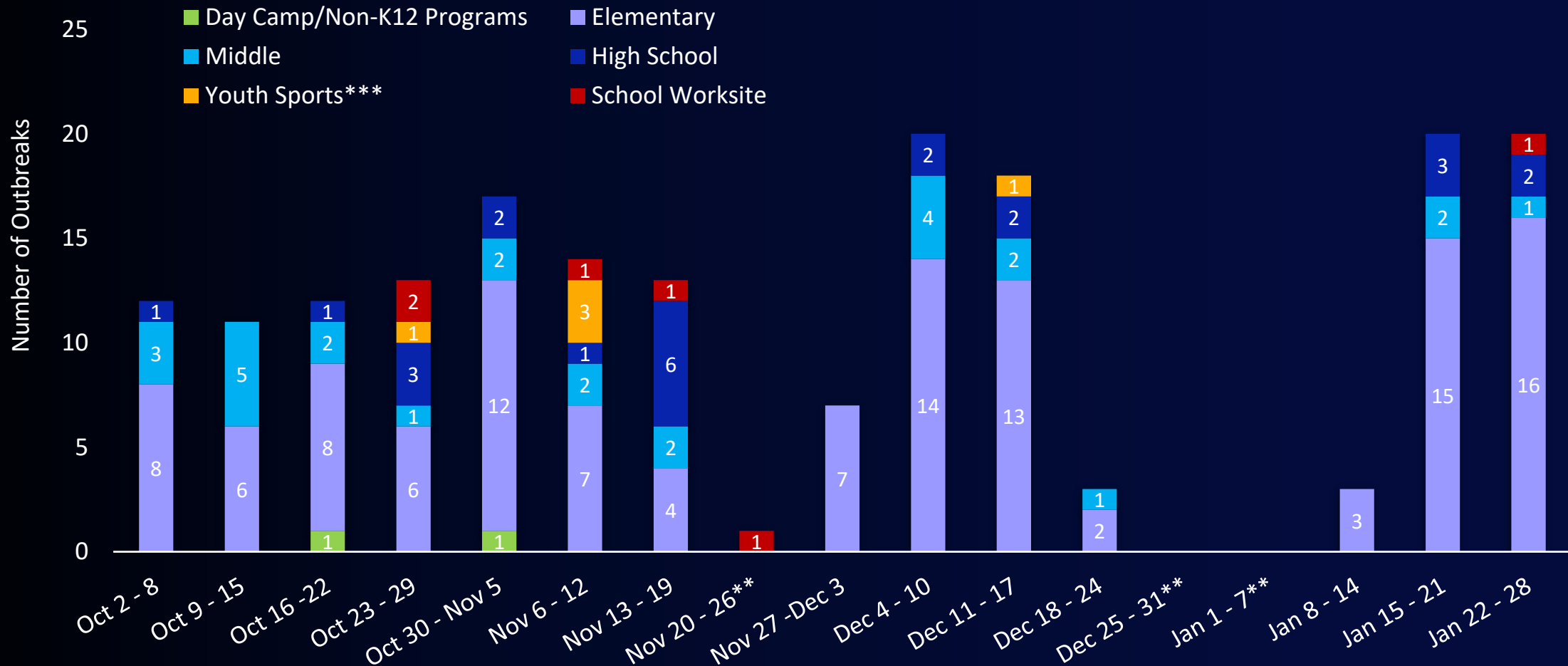


- All other Omicron
- Omicron BA.2 (Excludes BA.2.75, BA.2.75.2, BN.1, and XBB)
- Omicron BA.2.75.2 (Excludes BA.2.75.2 and BN.1)
- Omicron BA.4.6
- Omicron BA.5 (Excludes BF.7, BF.11, BA.5.2.6, BQ.1 and BQ.1.1)
- Omicron BN.1
- BF.7
- BF.11
- BA.5.2.6
- BQ.1 (Excludes BQ.1.1)
- CH.1.1
- XBB (excluding XBB.1.5)
- XBB.1.5



COVID-19 Outbreaks in TK-12 Schools and Youth Programs

October 2, 2022 – January 28, 2023*



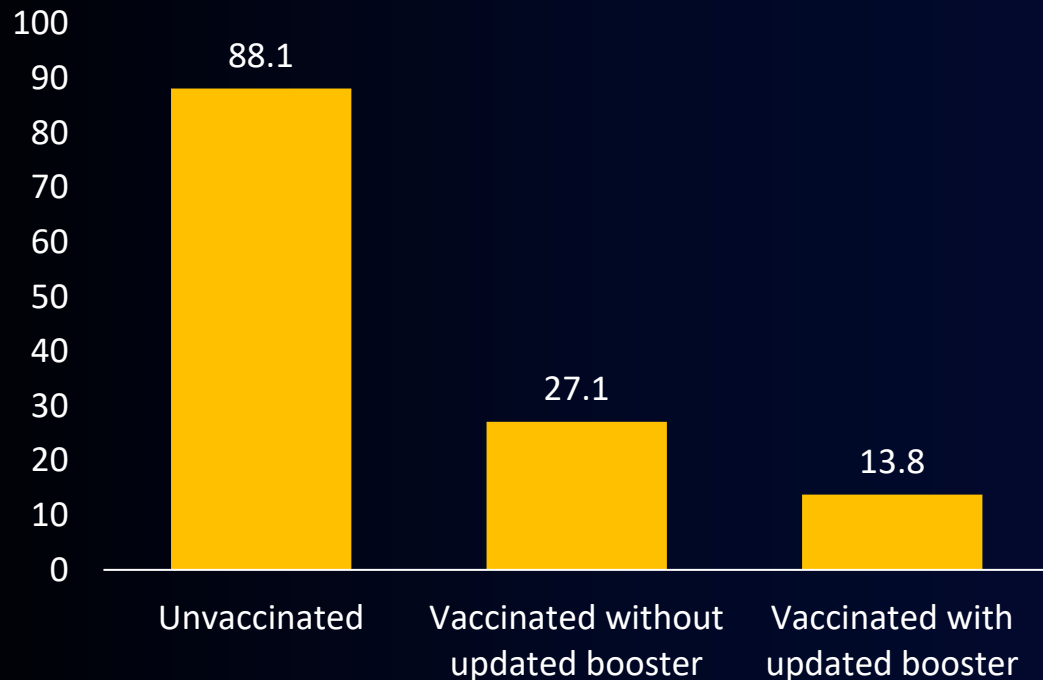
covid19.lacounty.gov

2/2/2023

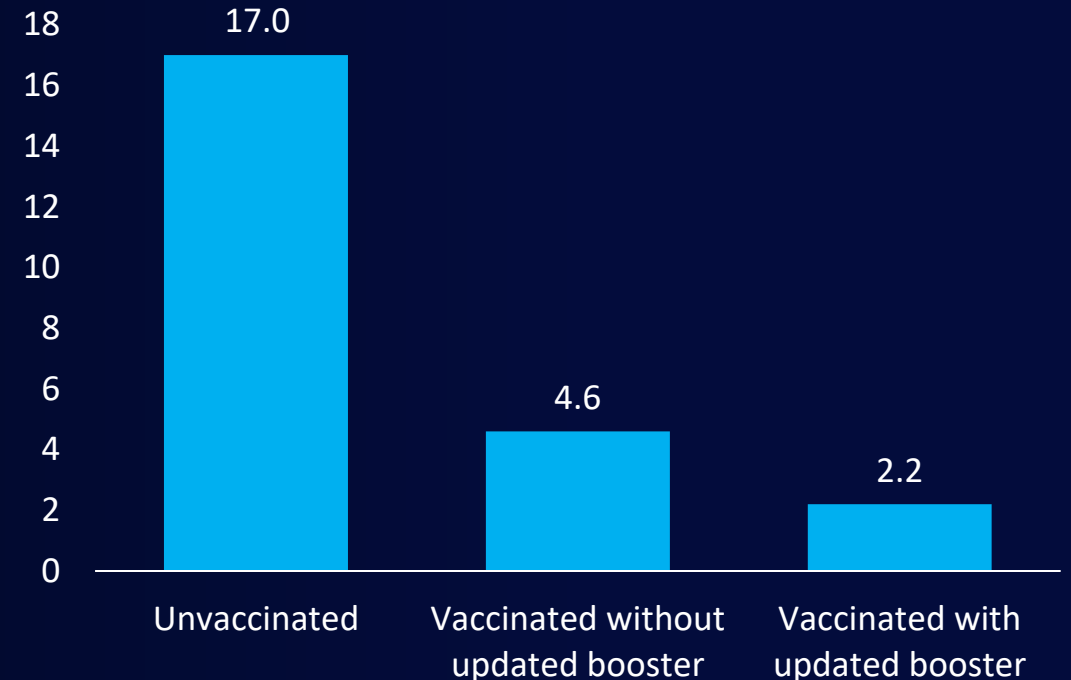
*Outbreaks are reported by the date the investigation was opened. Outbreaks may still be under investigation. Location of outbreaks in TK-12 include classroom and other locations within the school setting.
 **Number of outbreaks opened were low or zero due to school breaks.
 ***All the Youth Sports Outbreaks have been in a high-school setting.

30-Day Hospitalization and Death Rates by Bivalent Booster Vaccination Status, LA County

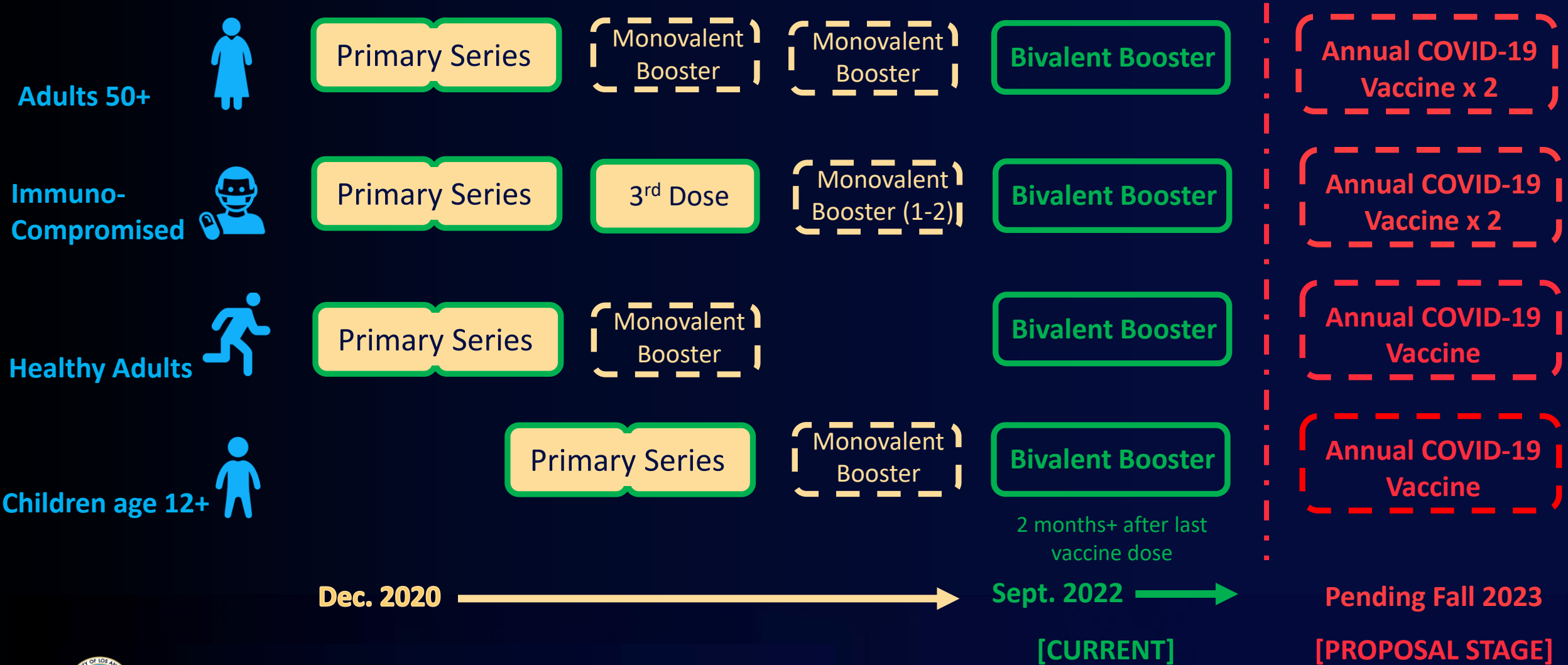
Hospitalization Rates per 100,000
30-day period ending 1/17/23



Death Rates per 100,000
30-day period ending 1/10/23



mRNA COVID-19 Vaccine Schedules



mRNA COVID-19 Vaccine Schedules

Children 5+
(Pfizer)



Primary Series

Monovalent
Booster

Bivalent Booster

Annual COVID-19
Vaccine

Children 6mos.+
(Pfizer)



3 dose
primary series

First Dose
(monovalent)

Second Dose
(monovalent)

Third Dose
(bivalent)

Annual COVID-19
Vaccine

Children
6mos. – 11 yrs.
(Moderna)



Primary Series

Bivalent Booster

Annual COVID-19
Vaccine

Dec. 2020



Sept. 2022



2 months+ after last
vaccine dose

[CURRENT]

Pending Fall 2023

[PROPOSAL STAGE]



Preparing for the Annual Booster in LA County

Network capacity

- Strong partnerships with a network of over **1,990 vaccine providers**
- A commitment to continue to make COVID-19 vaccines available **equitably, safely and rapidly** through pharmacies, community clinics, hospital sites, long-term care facilities, mobile teams, and other local healthcare providers.

ph.lacounty.gov/howtogetvaccinated

Ensuring homebound access

- COVID and flu vaccines are available **for anyone who is homebound.**
- Call **1-833-540-0473** between 8:00 am and 8:30 pm, 7 days a week, for assistance scheduling an appointment
- Find an online request form at ph.lacounty.gov/vaxathome

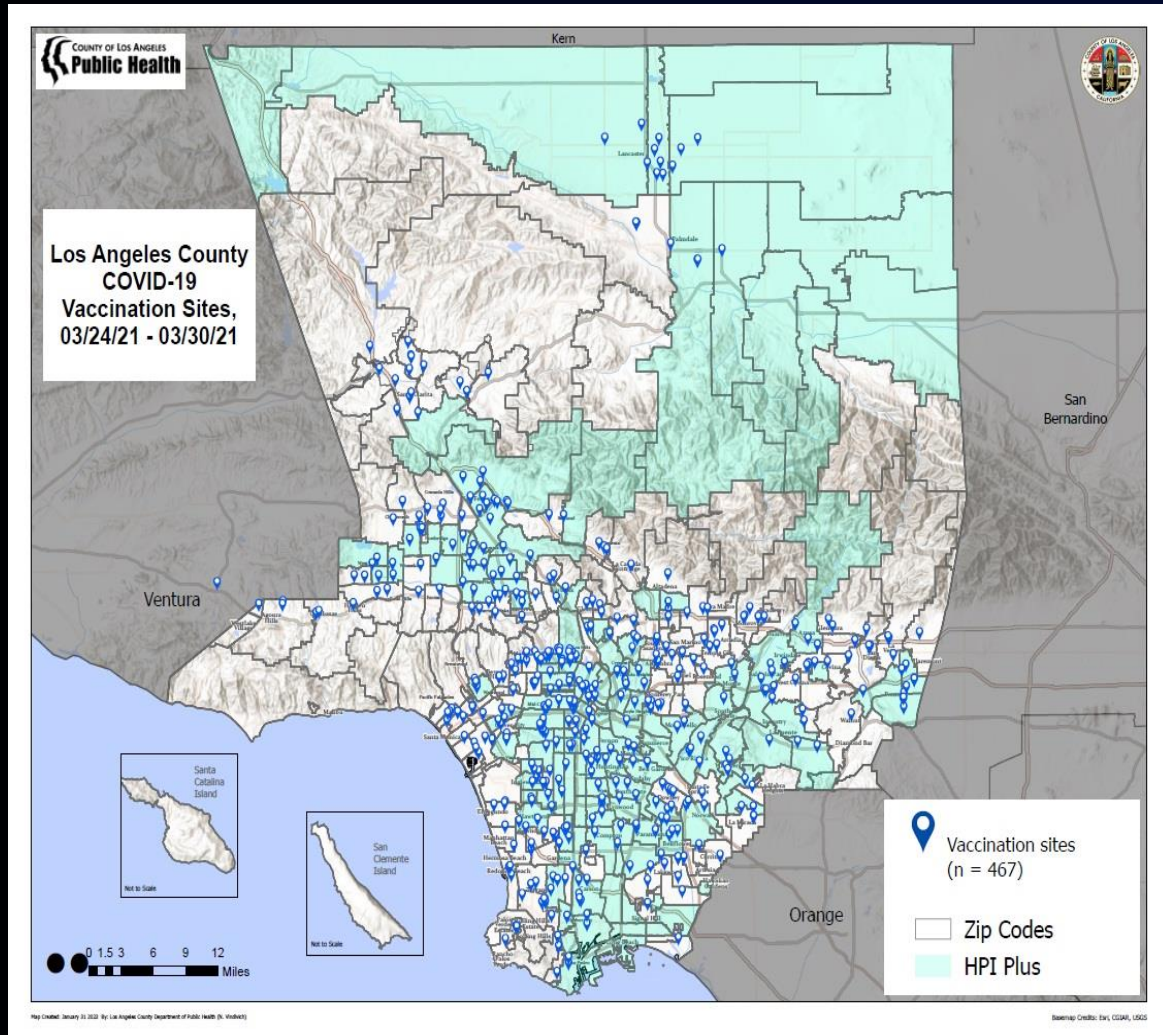


covid19.lacounty.gov

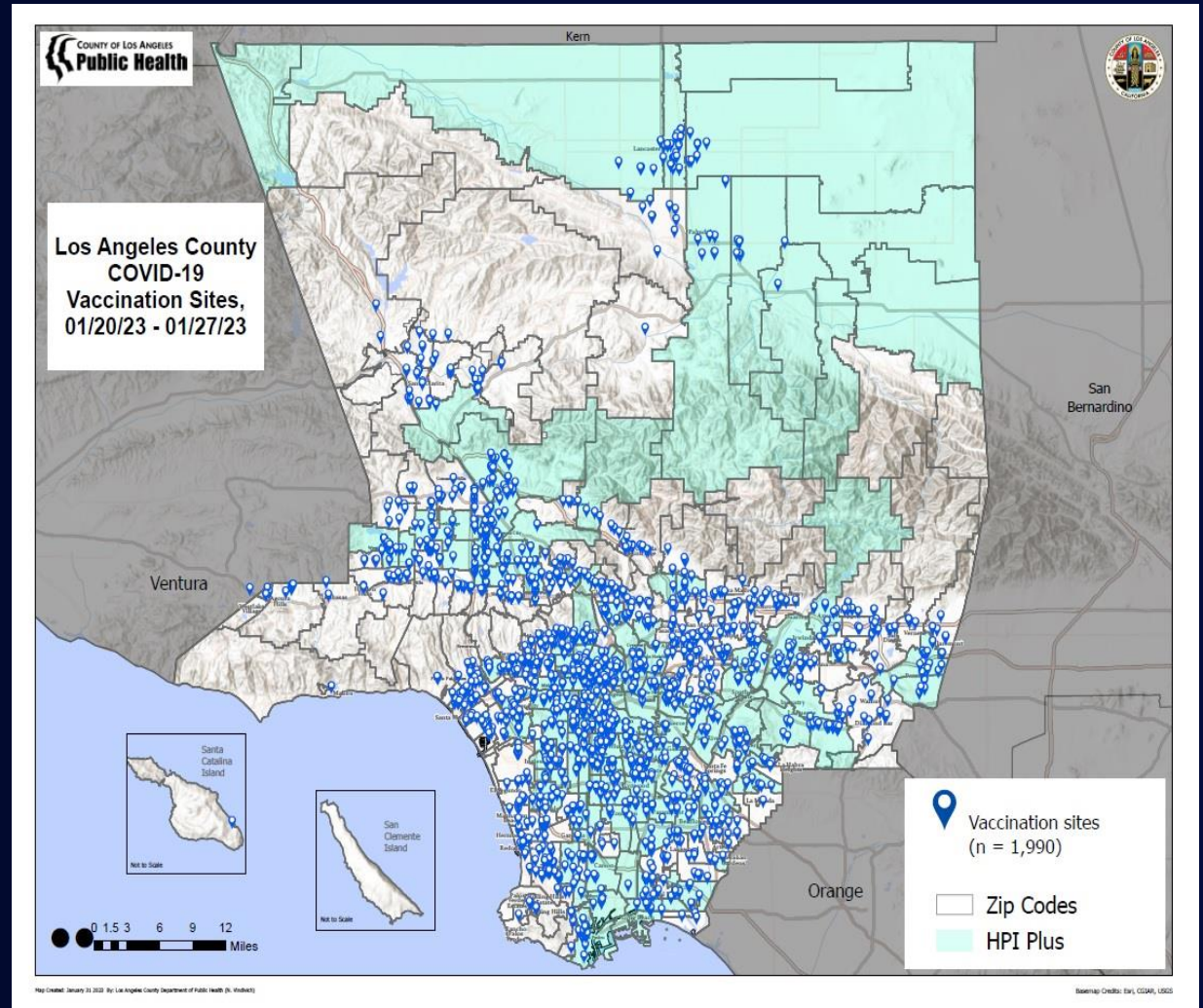
2/2/2023

Los Angeles County COVID-19 Vaccination Sites in March 2021 and January 2023

March 2021



January 2023



covid19.lacounty.gov

2/2/2023

ph.lacounty.gov/howtogetvaccinated

Emergency Declarations to Be Lifted for COVID-19

U.S. Federal Emergency Declaration Lifting May 11, 2023

- The government will no longer be purchasing COVID-19 vaccines
- COVID-19 tests, treatments, and vaccines will have cost sharing obligations in the future
- Charges will vary depending on if the person has private insurance, Medicare, Medicaid, or no insurance

California COVID-19 Emergency Declaration Lifting February 28, 2023

- Will end all of pandemic-related State executive orders issued by the Governor (currently 27 remain)
- Does not affect local emergency and public health orders of local jurisdictions

LA County COVID-19 Emergency Declaration:

- Support for local Health Officer public health emergency declaration
- Community protections, including an eviction moratorium





COUNTY OF LOS ANGELES

Public Health



covid19.lacounty.gov

2/2/2023